



PRIME INSTITUTIONAL FACILITY | FOR SALE

SOUTH STREET

Goderich, ON N7A 4G6



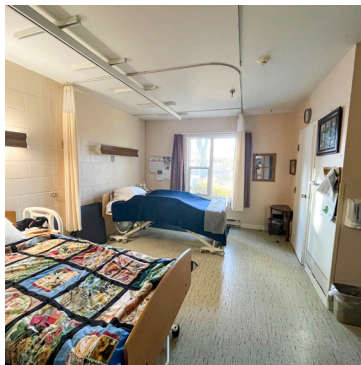
 **CUSHMAN & WAKEFIELD**
Southwestern Ontario

ASKING PRICE: \$4,500,000

ABOUT THE PROPERTY

Single-level, 30,000 square-foot long-term care facility for sale in the charming town of Goderich, Ontario. Situated on 2.2 acres, this property offers 32 bedrooms, a salon, spa, fully equipped kitchen, dining areas, patios, activity rooms, nursing stations and offices. With vacant possession available upon closing, this property presents a unique opportunity for redevelopment or repurposing to suit your vision.

- **Building Area:** 30,000 SF
- **Site Area:** 2.2 Acres
- **Taxes:** Approx. \$70,331.50 (2024)
- **Zoning:** R3



JAMESON LAKE
Sales Representative
519 438 8548
jameson.lake@cushwakeswo.com

CUSHMAN & WAKEFIELD
SOUTHWESTERN ONTARIO
850 Medway Park Dr, Suite 201
London, Ontario N6G 5C6
www.cushwakeswo.com

 **CUSHMAN & WAKEFIELD**
Southwestern Ontario