

MERIDIAN PARK SOUTH

BUILDING 1 : 16300 Coyote Bush Road, Riverside, CA 92518



MERIDIAN
WHERE COMMERCE MEETS THE WORLD

±144,030 SF INDUSTRIAL BUILDING FOR SALE OR LEASE



Phil Lombardo

phil.lombardo@cushwake.com
+1 909 942 4678
CA License 00892477

Joseph L. McKay

jmckay@lee-assoc.com
+1 909 373 2914
CA License 00894360

Chuck Belden, SIOR

chuck.belden@cushwake.com
+1 909 942 4640
CA License 00844840

Michael Fine

mfine@lee-assoc.com
+1 909 373 2917
CA License 01735854

Andrew Starnes

andrew.starnes@cushwake.com
+1 909 942 4667
CA License 01799801



A QUALITY PROJECT BY:



PROPERTY FEATURES



±144,030 SF Industrial Building



32' Clear Height



±3,742 SF High End Office Space



28 Dock High Doors (9'w x 10'h)
(4 Doors w/ Dock Packages)



2 Grade Level Ramps (12'w x 15'h)



135' - 247' Secured Yard Area



51 Trailer Stalls



134 Car Parking Spaces



ESFR Sprinkler System



2,000 Amp, 277/480v Electrical



25 FC LED Lighting



A QUALITY PROJECT BY:

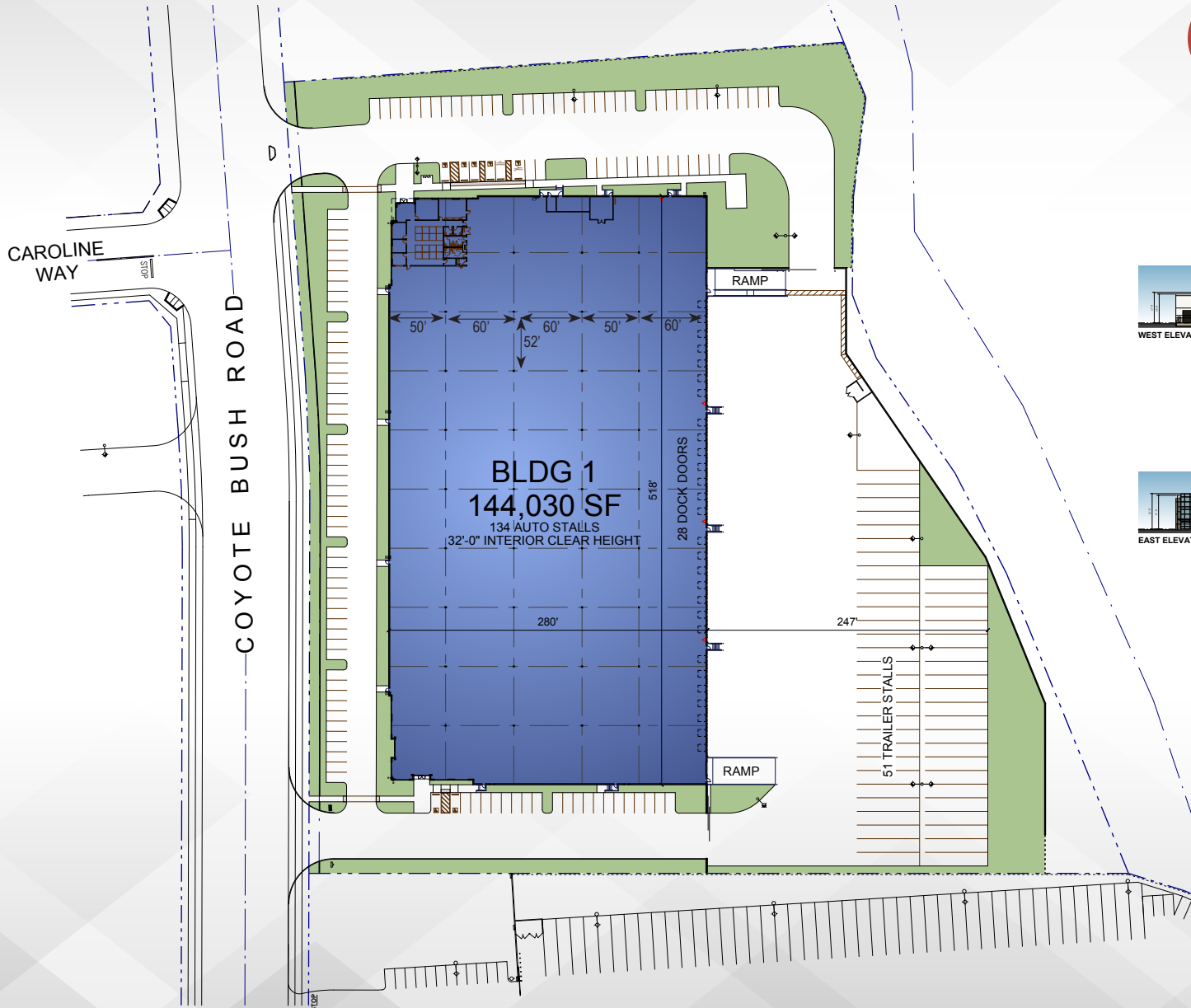


CROW HOLDINGS
CAPITAL





MERIDIAN
WHERE COMMERCE MEETS THE WORLD

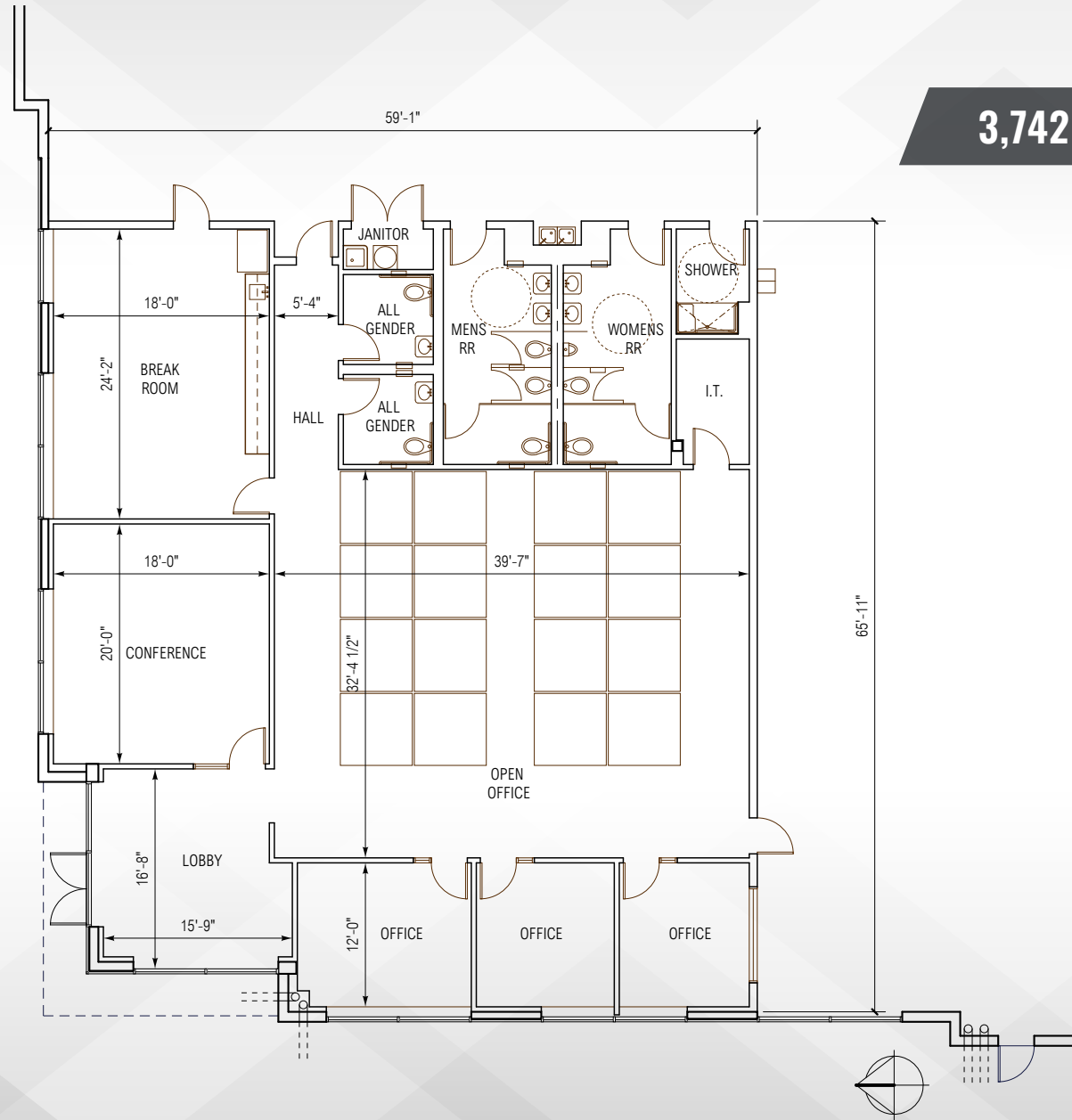


16300 Coyote Bush Road, Riverside, CA 92518



MERIDIAN
WHERE COMMERCE MEETS THE WORLD

3,742 SF OFFICE AREA

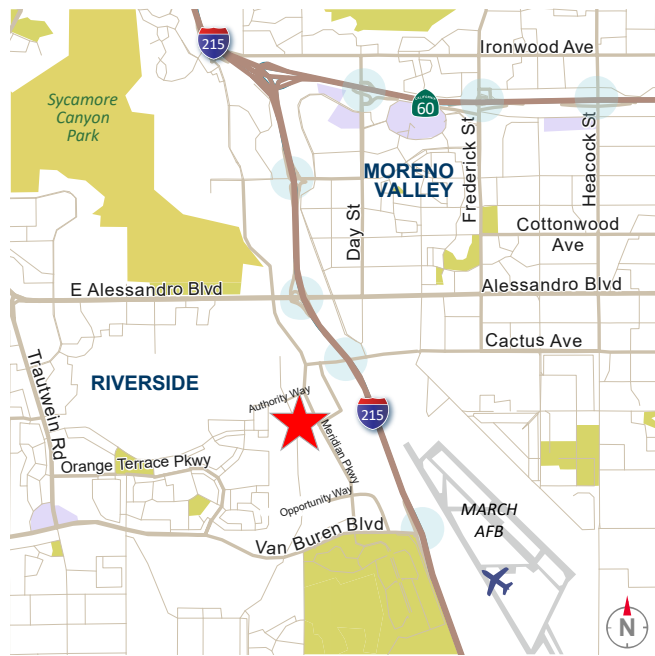


A QUALITY PROJECT BY:



CROW HOLDINGS
CAPITAL

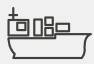





NORTH

- 25 miles
- 50 miles
- 75 miles

 **26 MILES**
to Ontario International Airport

 **74 MILES**
to the Ports of Los Angeles & Long Beach

 **77 MILES**
to Los Angeles International Airport (LAX)

 **89 MILES**
to San Diego

Phil Lombardo
phil.lombardo@cushwake.com
+1 909 942 4678
CA License 00892477

Chuck Belden, SIOR
chuck.belden@cushwake.com
+1 909 942 4640
CA License 00844840

Andrew Starnes
andrew.starnes@cushwake.com
+1 909 942 4667
CA License 01799801

Joseph L. McKay
jmckay@lee-assoc.com
+1 909 373 2914
CA License 00894360

Michael Fine
mfine@lee-assoc.com
+1 909 373 2917
CA License 01735854



MERIDIAN
WHERE COMMERCE MEETS THE WORLD

A QUALITY PROJECT BY:

