

MERIDIAN PARK SOUTH

BUILDING 2 : 21101 Krameria Avenue, Riverside, CA 92518



MERIDIAN
WHERE COMMERCE MEETS THE WORLD

±127,134 SF INDUSTRIAL BUILDING FOR SALE OR LEASE



Phil Lombardo
phil.lombardo@cushwake.com
+1 909 942 4678
CA License 00892477

Chuck Belden, SIOR
chuck.belden@cushwake.com
+1 909 942 4640
CA License 00844840

Andrew Starnes
andrew.starnes@cushwake.com
+1 909 942 4667
CA License 01799801

Joseph L. McKay
jmckay@lee-assoc.com
+1 909 373 2914
CA License 00894360

Michael Fine
mfine@lee-assoc.com
+1 909 373 2917
CA License 01735854



A QUALITY PROJECT BY:



PROPERTY FEATURES



±127,134 SF Industrial Building



32' Clear Height



±5,659 SF Two-Story Offices



23 Dock High Doors (9'w x 10'h)
(4 Doors w/ Dock Packages)



2 Grade Level Ramps (12'w x 15'h)



135' Secured Yard Area



17 Trailer Stalls



94 Car Parking Spaces



ESFR Sprinkler System



1,200 Amp, 277/480v Electrical



25 FC LED Lighting

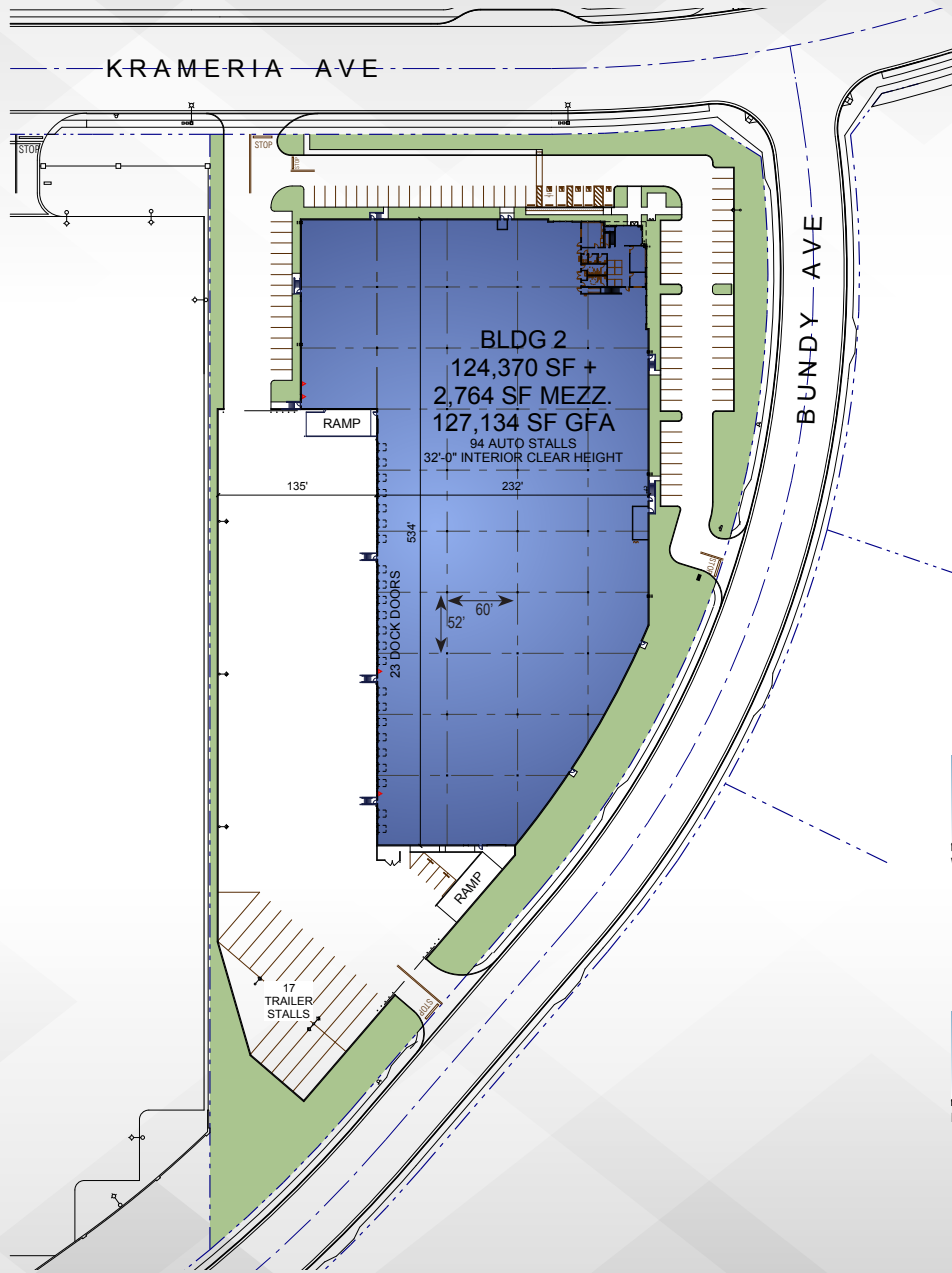


A QUALITY PROJECT BY:



CROW HOLDINGS
CAPITAL





MERIDIAN
WHERE COMMERCE MEETS THE WORLD



NORTH ELEVATION - KRAMERIA AVE., MAIN ENTRY



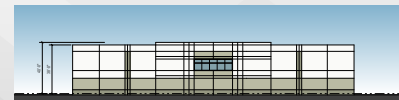
WEST ELEVATION



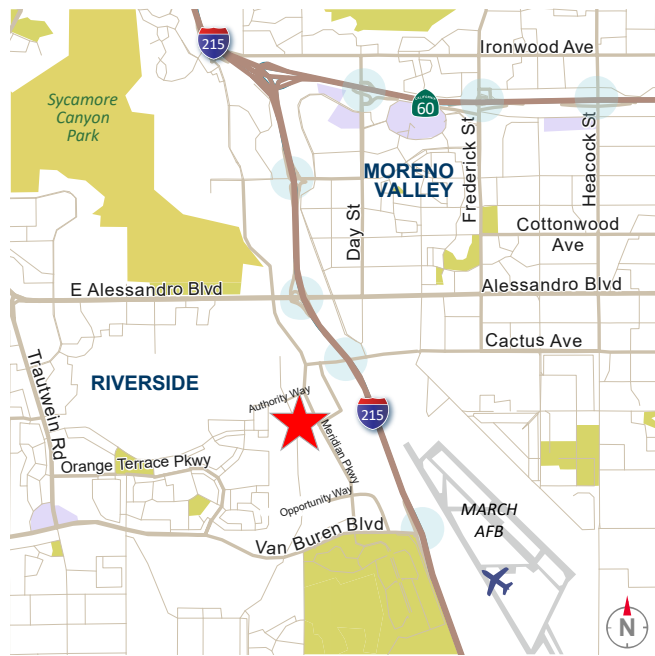
SOUTH ELEVATION - BUNDY AVE.



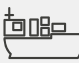
EAST ELEVATION - BUNDY AVE.



ANGLED WALL - BUNDY AVE.



 **26 MILES**
to Ontario International Airport

 **74 MILES**
to the Ports of Los Angeles & Long Beach

 **77 MILES**
to Los Angeles International Airport (LAX)

 **89 MILES**
to San Diego

Phil Lombardo
phil.lombardo@cushwake.com
+1 909 942 4678
CA License 00892477

Chuck Belden, SIOR
chuck.belden@cushwake.com
+1 909 942 4640
CA License 00844840

Andrew Starnes
andrew.starnes@cushwake.com
+1 909 942 4667
CA License 01799801

Joseph L. McKay
jmckay@lee-assoc.com
+1 909 373 2914
CA License 00894360

Michael Fine
mfine@lee-assoc.com
+1 909 373 2917
CA License 01735854



MERIDIAN
WHERE COMMERCE MEETS THE WORLD

A QUALITY PROJECT BY:

