

MERIDIAN PARK SOUTH

BUILDING 3 : 21201 Krameria Avenue, Riverside, CA 92518



MERIDIAN
WHERE COMMERCE MEETS THE WORLD

±53,085 SF INDUSTRIAL BUILDING FOR SALE OR LEASE



Phil Lombardo
phil.lombardo@cushwake.com
+1 909 942 4678
CA License 00892477

Joseph L. McKay
jmckay@lee-assoc.com
+1 909 373 2914
CA License 00894360

Chuck Belden, SIOR
chuck.belden@cushwake.com
+1 909 942 4640
CA License 00844840

Michael Fine
mfine@lee-assoc.com
+1 909 373 2917
CA License 01735854

Andrew Starnes
andrew.starnes@cushwake.com
+1 909 942 4667
CA License 01799801



A QUALITY PROJECT BY:



PROPERTY FEATURES



±53,085 SF Industrial Building



28' Clear Height



±5,570 SF Two-Story Offices



8 Dock High Doors (9'w x 10'h)
(4 Doors w/ Dock Packages)



1 Grade Level Ramp (12'w x 15'h)



130' Secured Yard Area w/ 12' Concrete
Screen Wall



67 Car Parking Spaces



ESFR Sprinkler System



1,200 Amp, 277/480v Electrical



25 FC LED Lighting



A QUALITY PROJECT BY:



CROW HOLDINGS
CAPITAL

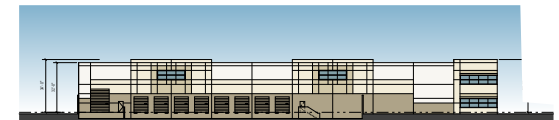
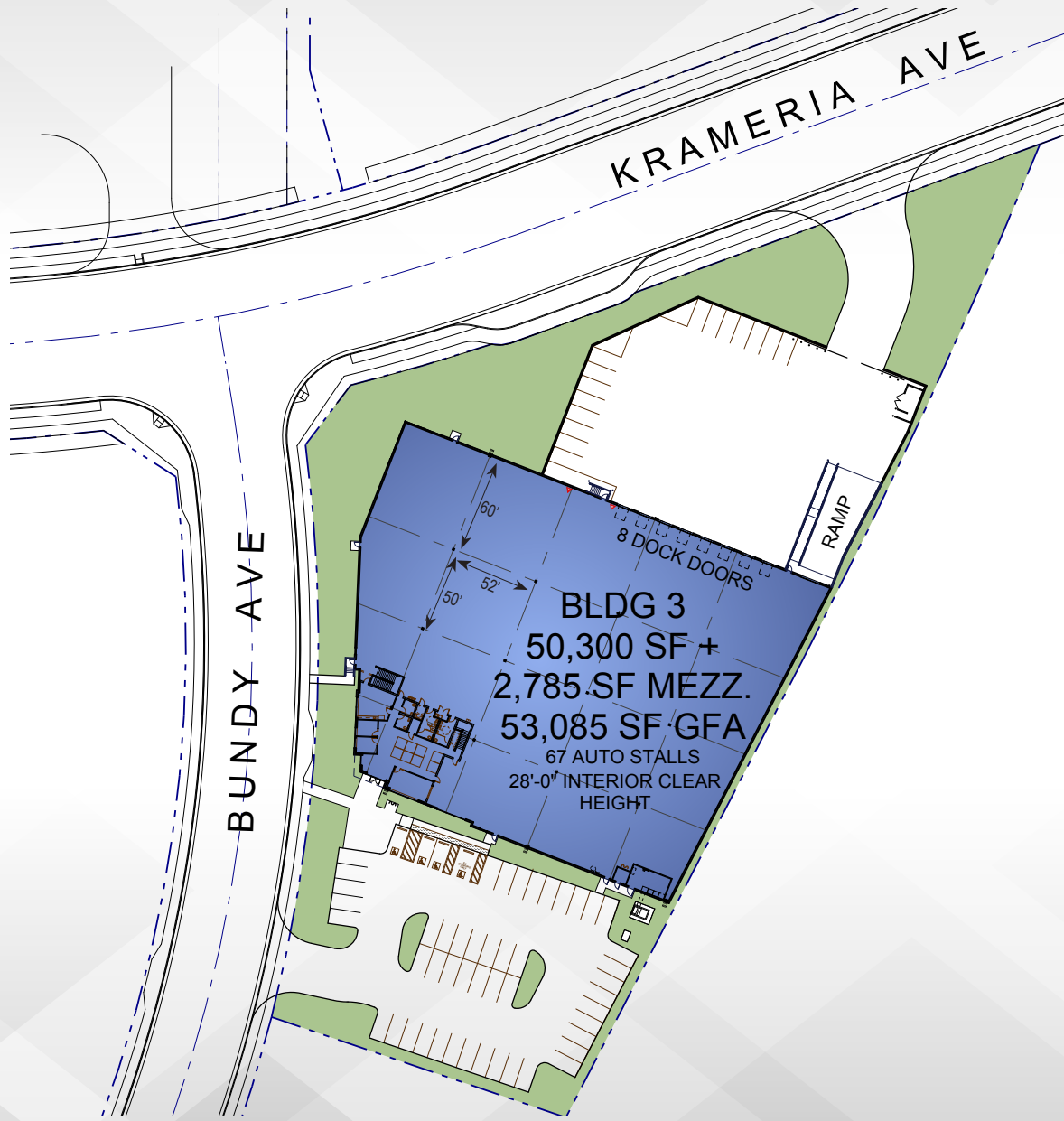


21201 Krameria Avenue, Riverside, CA 92518

FOR SALE OR LEASE : ±53,085 SF



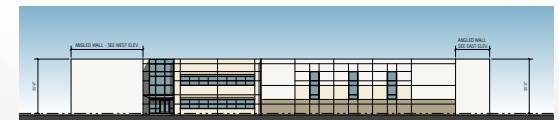
MERIDIAN
WHERE COMMERCE MEETS THE WORLD



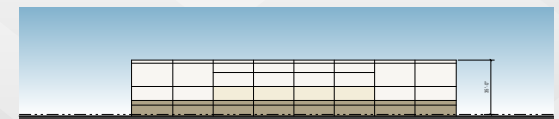
NORTH ELEVATION - KRAMERIA AVE.



WEST ELEVATION - BUNDY AVE.



SOUTH ELEVATION - MAIN ENTRY



EAST ELEVATION

A QUALITY PROJECT BY:



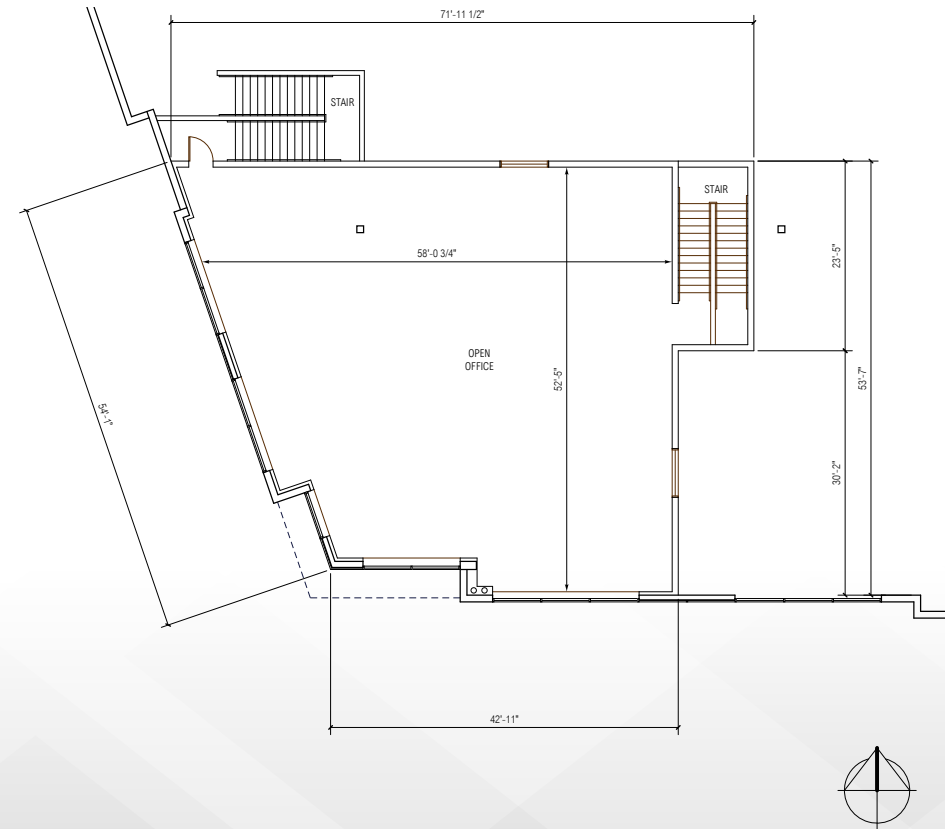
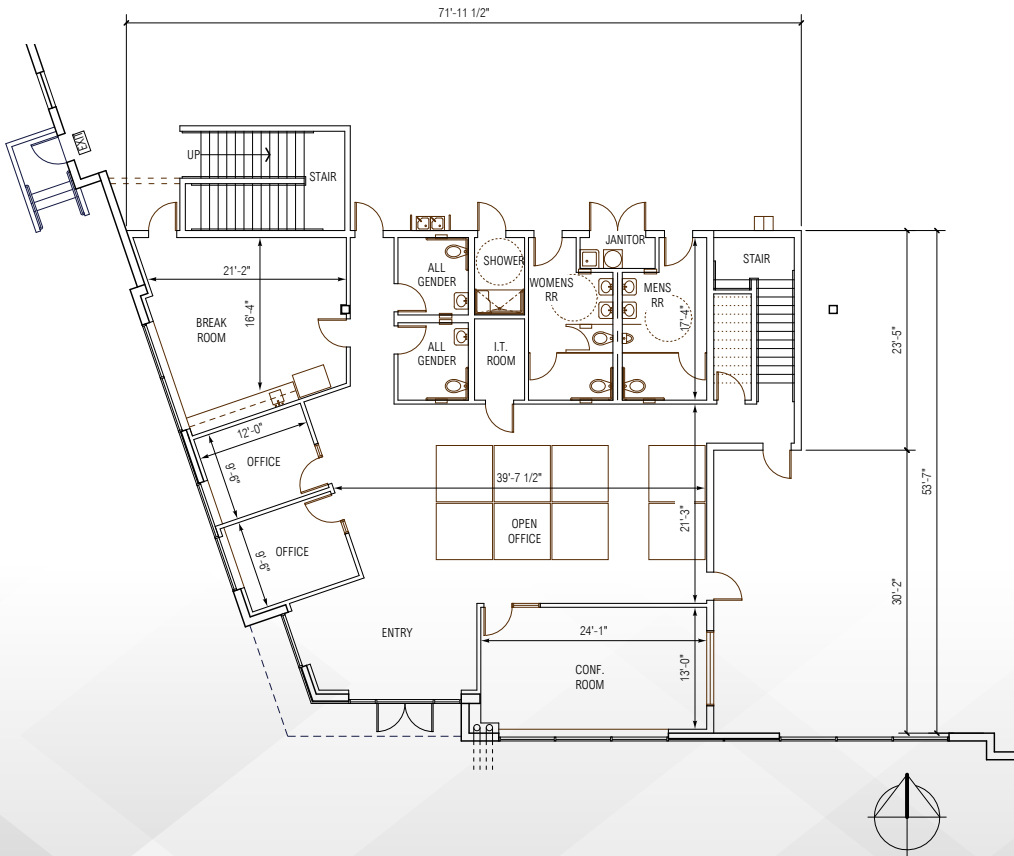
CROW HOLDINGS
CAPITAL

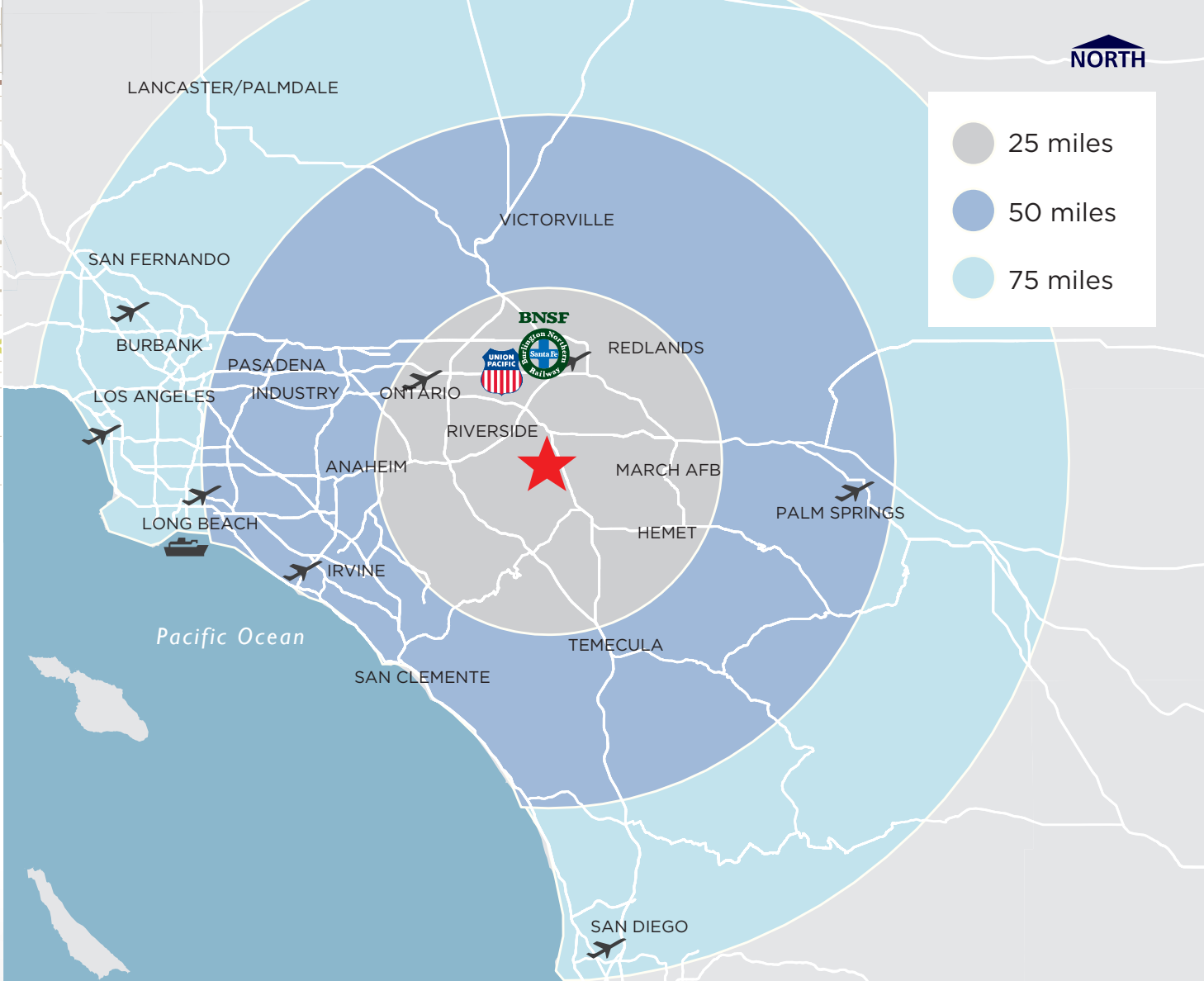
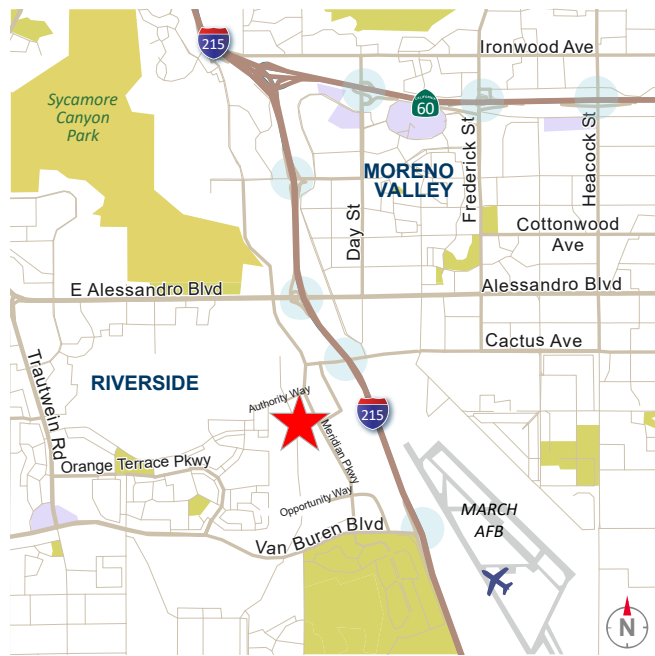




2,785 SF FIRST FLOOR OFFICE

2,785 SF 2ND FLOOR OFFICE





26 MILES

to Ontario International Airport



74 MILES

to the Ports of Los Angeles & Long Beach



77 MILES

to Los Angeles International Airport (LAX)



89 MILES

to San Diego

Phil Lombardo

phil.lombardo@cushwake.com
+1 909 942 4678
CA License 00892477

Joseph L. McKay

jmckay@lee-assoc.com
+1 909 373 2914
CA License 00894360

Chuck Belden, SIOR

chuck.belden@cushwake.com
+1 909 942 4640
CA License 00844840

Michael Fine

mfine@lee-assoc.com
+1 909 373 2917
CA License 01735854

Andrew Starnes

andrew.starnes@cushwake.com
+1 909 942 4667
CA License 01799801



MERIDIAN
WHERE COMMERCE MEETS THE WORLD

A QUALITY PROJECT BY:

