

# GATEWAY CORPORATE CENTER

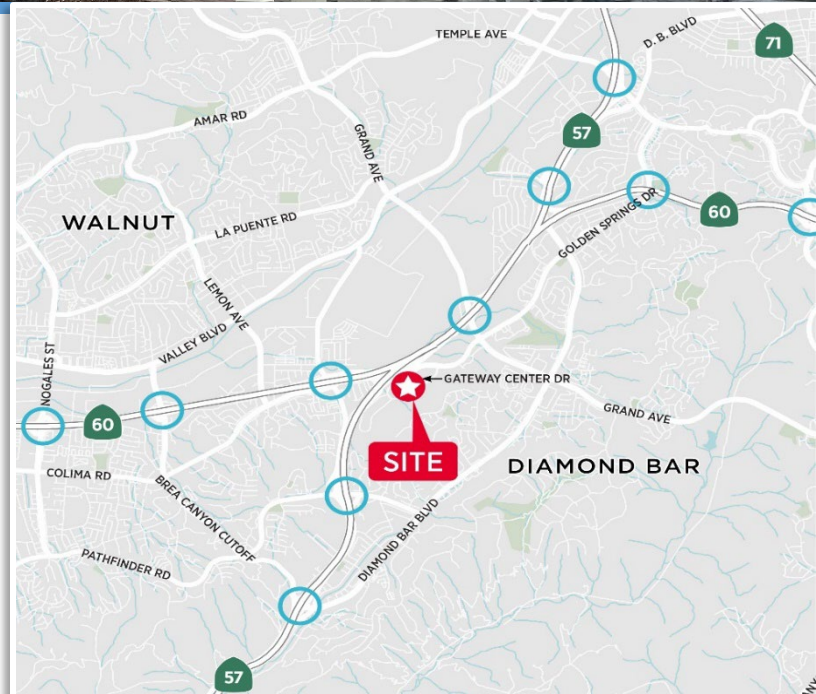
21680 Gateway Center Drive | Diamond Bar, California

8,097 Sq. Ft. For Sublease



## PROPERTY FEATURES

- Suite 320/360
- 8,097 SF Office Space for Sublease (divisible down to 2,500 SF)
- Very Clean And Attractive Space
- 5/1,000 Parking Ratio
- Ready for Immediate Move-In
- Lease Rate: Negotiable
- Centrally Located – Gateway to Four Counties
- Located Minutes from the 10, 57, 71 & 60 Freeways
- Close to Ontario International Airport, Hotels, Restaurants, Business Services and Retail



For more information, please contact:

**SEAN KERN**  
909.942.4691  
sean.kern@cushwake.com  
Lic. #01377294

Cushman & Wakefield of CA, Inc.  
1370 Valley Vista Drive, Suite 200  
Diamond Bar, CA 91765



# GATEWAY CORPORATE CENTER

21680 Gateway Center Drive | Diamond Bar, California

8,097 Sq. Ft. For Sublease



For more information, please contact:

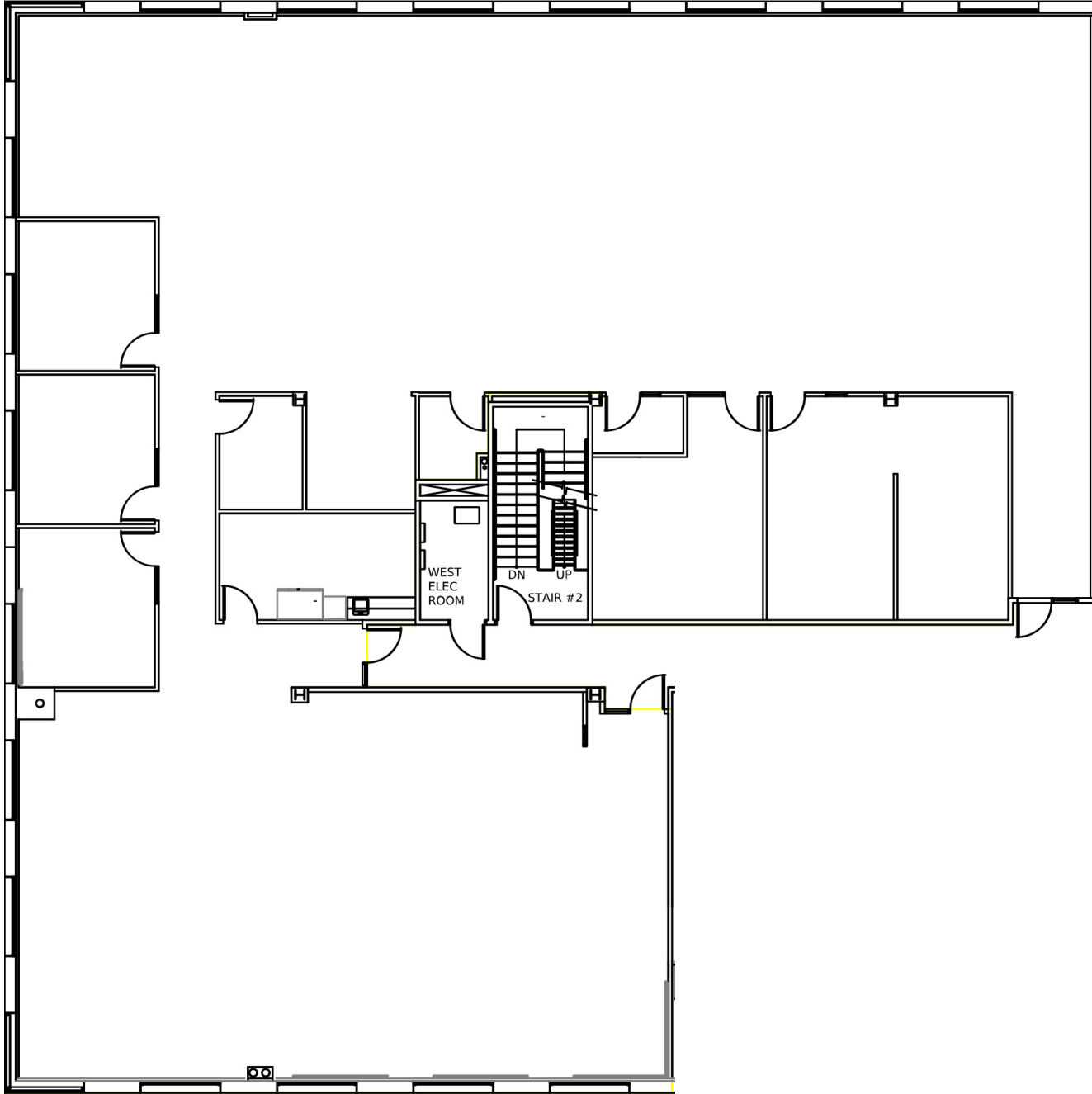
**SEAN KERN**  
909.942.4691  
sean.kern@cushwake.com  
Lic. #01377294

Cushman & Wakefield of CA, Inc.  
1370 Valley Vista Drive, Suite 200  
Diamond Bar, CA 91765

# GATEWAY CORPORATE CENTER

21680 Gateway Center Drive | Diamond Bar, California

8,097 Sq. Ft. For Sublease



*For more information, please contact:*

**SEAN KERN**  
909.942.4691  
sean.kern@cushwake.com  
Lic. #01377294

Cushman & Wakefield of CA, Inc.  
1370 Valley Vista Drive, Suite 200  
Diamond Bar, CA 91765