



CUSHMAN &  
WAKEFIELD



# 180 NORSEMAN STREET

LOFT STYLE STUDIO AND PROFESSIONAL SPACE

**MULTIPLE UNITS FROM 850 - 7,300 SF  
ETOBICOKE, ON**

---

SHOWROOM & OFFICE AVAILABLE FOR LEASE





# PROPERTY DETAILS

<b>Location</b>	Kipling Avenue & Norseman Street
<b>Parking</b>	On-site One/Unit Additional Parking \$150 Monthly/Spot
<b>Additional Rent</b>	\$15.00 PSF T.M.I. *utilities included
<b>Listing Price</b>	\$20.00 PSF Net
<b>Gross Rent</b>	\$35.00 PSF Gross
<b>Possession</b>	Immediate



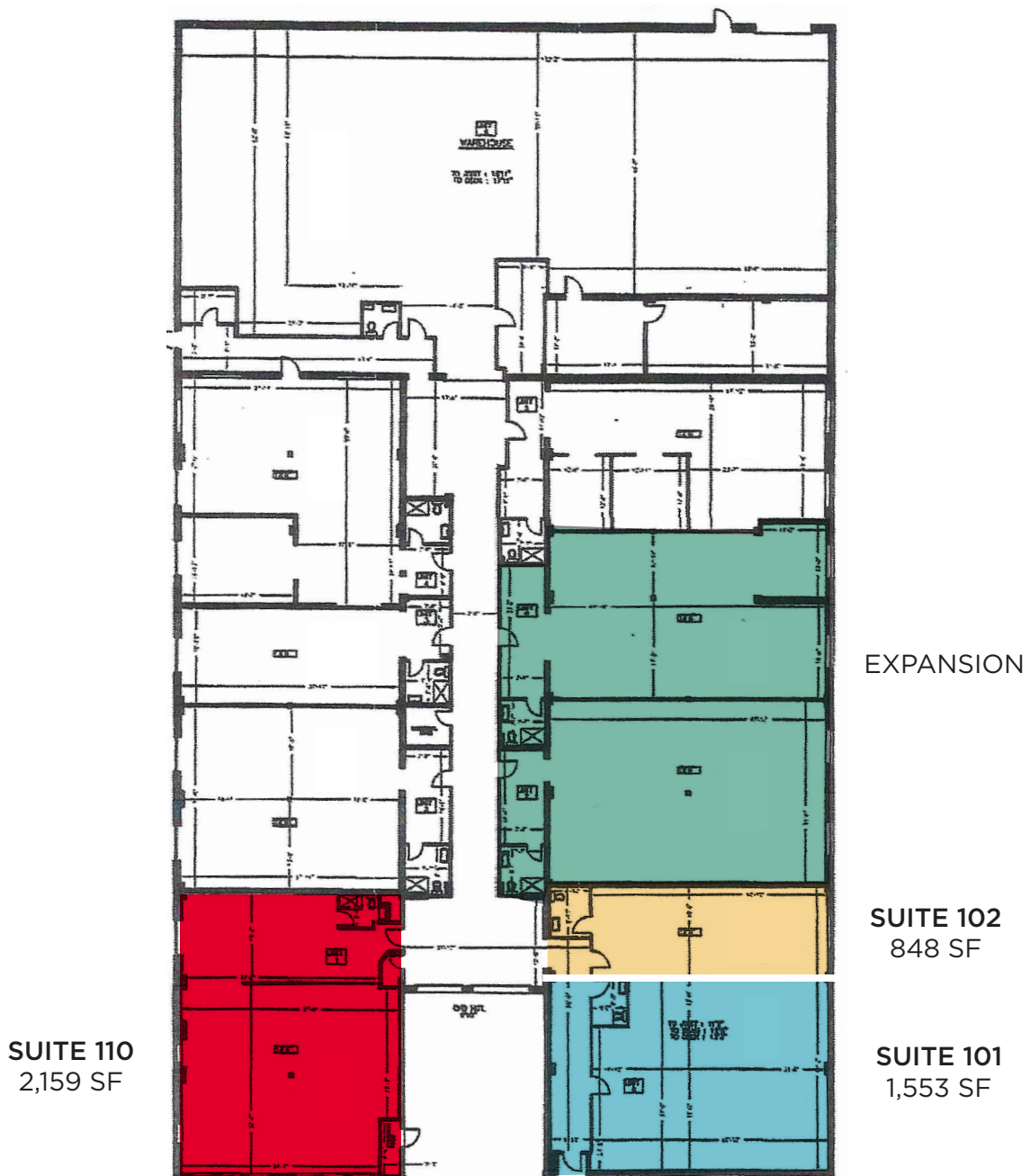
# HIGHLIGHTS

- Easy access to Highways 401, 427, & QEW
- Close proximity to TTC and subway
- New security system with cameras
- Expansion space available
- Ideal uses include art studio, general office space, legal, accounting, engineering and educational
- Major Intersection: Islington Avenue / Bloor Street

# FLOOR PLAN

<b>SUITE 101</b>	1,553 SF
<b>SUITE 102</b>	848 SF <i>Coming Soon</i>
<b>SUITE 110</b>	2,159 SF

- Premium private office suite newly renovated
- High ceilings at 12'
- Quality concrete treated floors
- High-end bathroom and shower finishings
- Kitchenette in each suite





# PROPERTY PICTURES







**CUSHMAN &  
WAKEFIELD**



For more information, please contact:

**GLORIA OR**

Associate

+1 416 359 2420

[gloria.or@cushwake.com](mailto:gloria.or@cushwake.com)

**JOHN M. FILICE, Ph.D.**

Senior Vice President

+1 905 501 6433

[john.filice@cushwake.com](mailto:john.filice@cushwake.com)

**CUSHMAN & WAKEFIELD ULC, BROKERAGE**

1 Prologis Boulevard Suite 300

Mississauga, Ontario L5W0G2

+1 905 568 9500

[cushmanwakefield.com](http://cushmanwakefield.com)

©2024 Cushman & Wakefield. All rights reserved. The information contained in this communication is strictly confidential. This information has been obtained from sources believed to be reliable but has not been verified. NO WARRANTY OR REPRESENTATION, EXPRESS OR IMPLIED, IS MADE AS TO THE CONDITION OF THE PROPERTY (OR PROPERTIES) REFERENCED HEREIN OR AS TO THE ACCURACY OR COMPLETENESS OF THE INFORMATION CONTAINED HEREIN, AND SAME IS SUBMITTED SUBJECT TO ERRORS, OMISSIONS, CHANGE OF PRICE, RENTAL OR OTHER CONDITIONS, WITHDRAWAL WITHOUT NOTICE, AND TO ANY SPECIAL LISTING CONDITIONS IMPOSED BY THE PROPERTY OWNER(S). ANY PROJECTIONS, OPINIONS OR ESTIMATES ARE SUBJECT TO UNCERTAINTY AND DO NOT SIGNIFY CURRENT OR FUTURE PROPERTY PERFORMANCE.