

# 8016 THORNDIKE ROAD

GREENSBORO, NC 27409



**AVAILABLE FOR SUBLEASE**

**+/- 24,554 SF AVAILABLE**

(+/- 3,000 SF OFFICE)

AVAILABLE 2/1/2025



**CUSHMAN &  
WAKEFIELD**

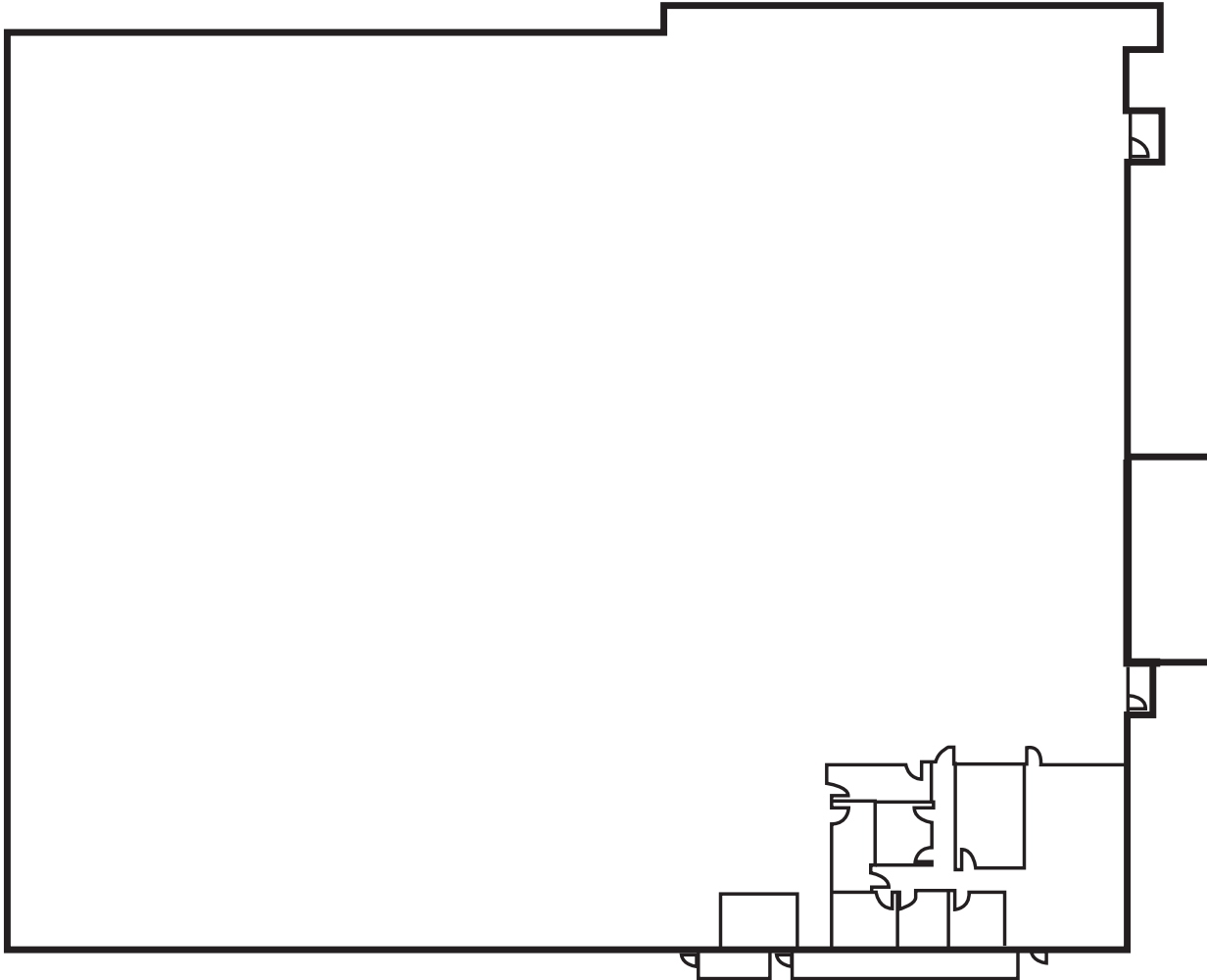




# 8016 THORNDIKE ROAD

GREENSBORO, NC 27409

## Floorplan



**Jason Ofsanko, SIOR**  
Managing Director  
+1 336 812 3300  
jason.ofsanko@cushwake.com

**Jordan Mitchell**  
Director  
+1 336 201 0495  
jordan.mitchelle@cushwake.com

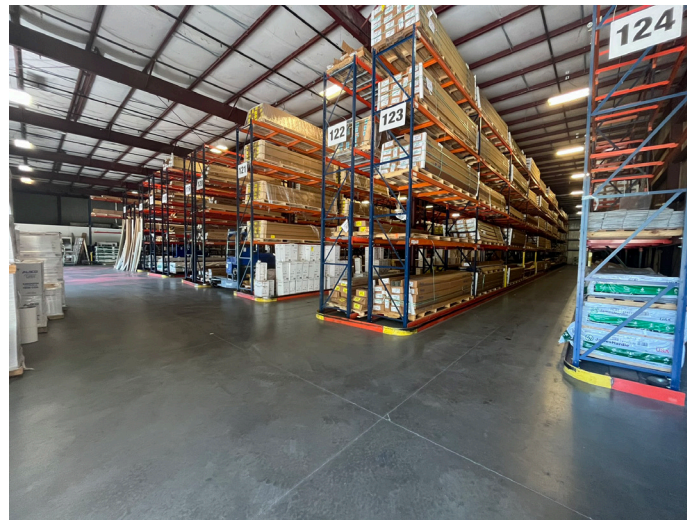
628 Green Valley Road, Ste. 202  
Greensboro, NC 27408  
Main +1 336 668 9999  
Fax +1 336 668 0888  
cushmanwakefield.com



# 8016 THORNDIKE ROAD

GREENSBORO, NC 27409

## Property Pictures



**Jason Ofsanko, SIOR**  
Managing Director  
+1 336 812 3300  
jason.ofsanko@cushwake.com

**Jordan Mitchell**  
Director  
+1 336 201 0495  
jordan.mitchelle@cushwake.com

628 Green Valley Road, Ste. 202  
Greensboro, NC 27408  
Main +1 336 668 9999  
Fax +1 336 668 0888  
cushmanwakefield.com



# 8016 THORNDIKE ROAD

GREENSBORO, NC 27409



## Location Map



Jason Ofsanko, SIOR  
Managing Director  
+1 336 812 3300  
jason.ofsanko@cushwake.com

Jordan Mitchell  
Director  
+1 336 201 0495  
jordan.mitchelle@cushwake.com

628 Green Valley Road, Ste. 202  
Greensboro, NC 27408  
Main +1 336 668 9999  
Fax +1 336 668 0888  
cushmanwakefield.com