

FOR SUBLEASE
1,470 – 7,812 SF



30956-30962 INDUSTRIAL ROAD
SARMOR BUSINESS PARK

LIVONIA, MICHIGAN



SUITE 30956

DETAILS

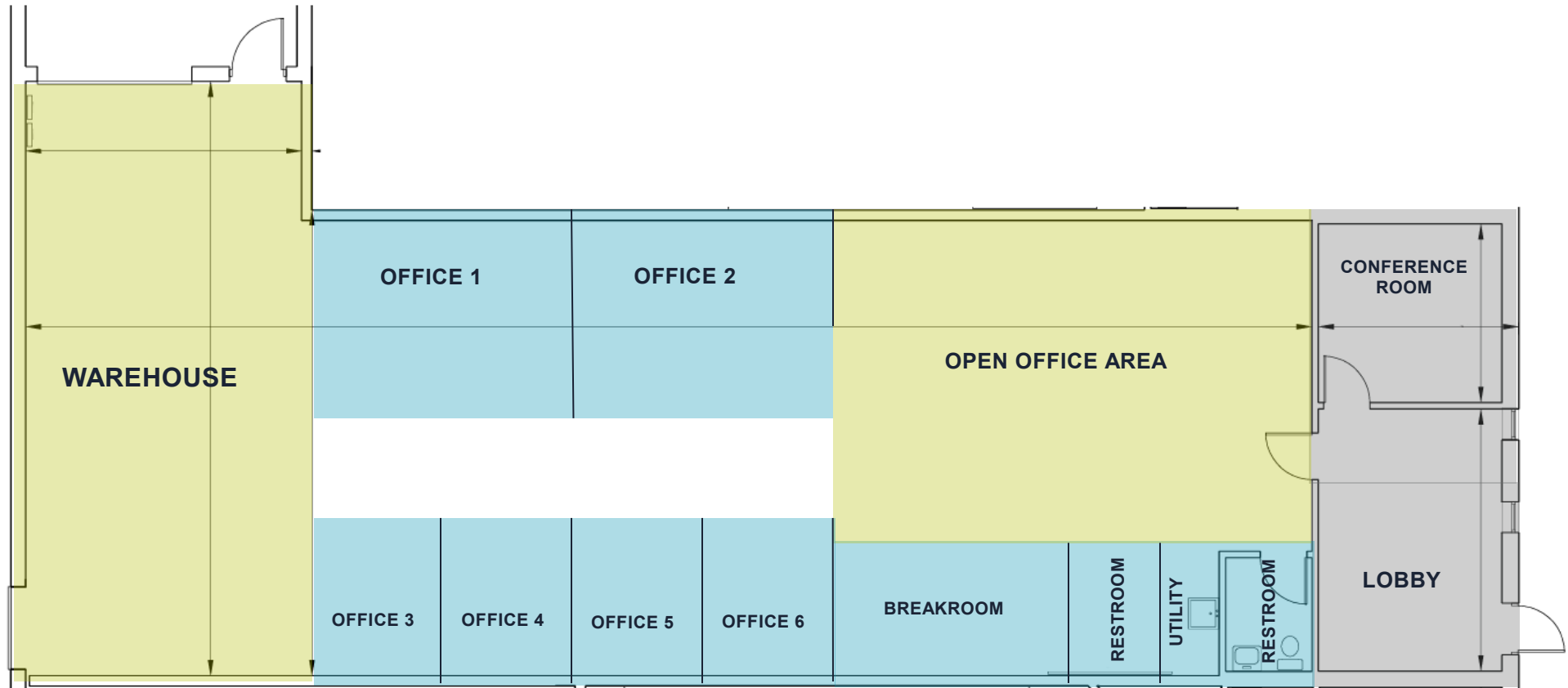
30956-30962 Industrial Rd
Livonia, MI

Address	30956 Industrial Rd, Livonia
Total SF	3,106 SF
Office Area	2,446 SF (can be reduced to 406 SF)
Industrial Area	660 SF (can be increased to 2,700 SF)
Property Class	C
Year Built	1978
Stories	1
Roof	Membrane
Construction Type	Masonry
Zoning	Light Industrial
Parcel ID	46-102-99-079-003
Auto Parking	150 total spots
Ceiling Clearance	18'
Docks/Wells	NA
Grade Doors	One (1) 10'x12'
Industrial Area HVAC	Heat only
Industrial Area Lighting	LED
Lunchroom / Breakroom	Yes
Floor Thickness	6"
Lease Rate	\$10.25/SF Gross
Desired Term	Sublease through 6/30/25 (longer term possible)



SUITE 30956

3,106 SF

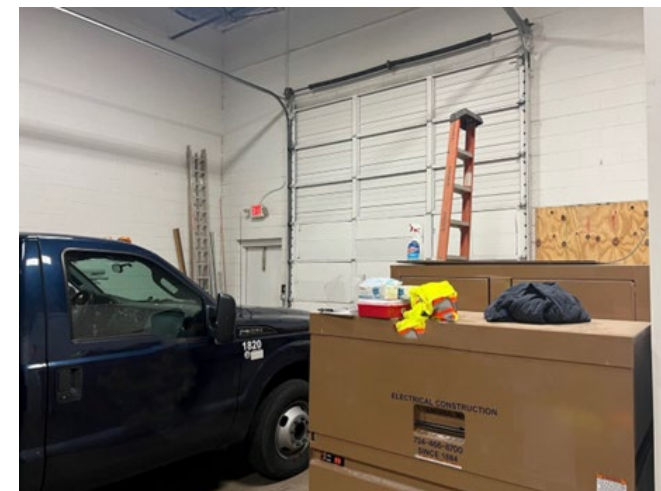


SUITE 30960

DETAILS

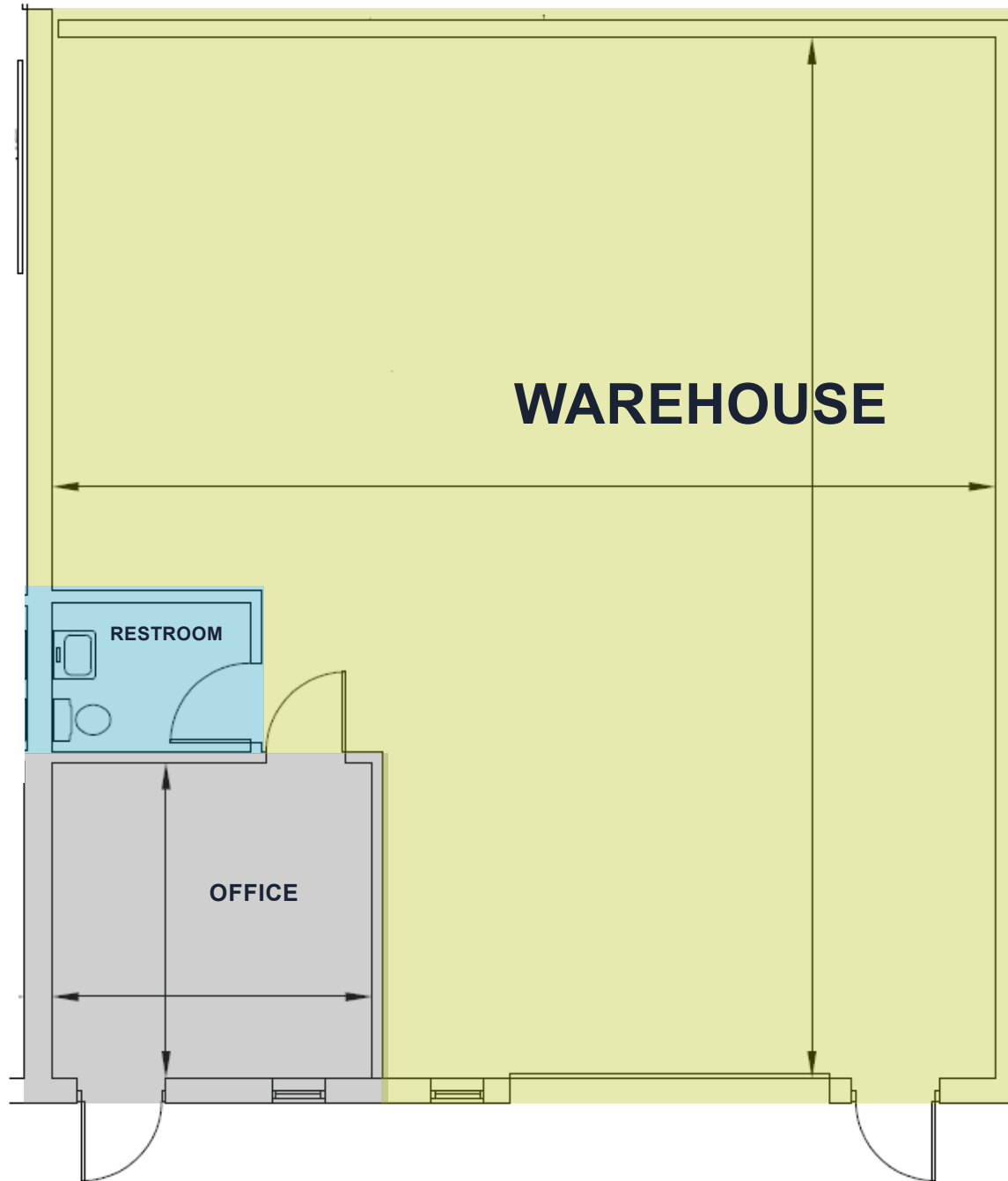
30956-30962 Industrial Rd
Livonia, MI

Address	30960 Industrial Rd, Livonia
Total SF	1,470 SF
Office Area	222 SF
Industrial Area	1,248 SF
Property Class	C
Year Built	1978
Stories	1
Roof	Membrane
Construction Type	Masonry
Zoning	Light Industrial
Parcel ID	46-102-99-079-003
Auto Parking	150 total spots
Ceiling Clearance	17' 9"
Docks/Wells	NA
Grade Doors	One (1) 12'x14'
Industrial Area HVAC	Heat only
Industrial Area Lighting	LED
Lunchroom / Breakroom	Yes
Floor Thickness	6"
Lease Rate	\$12.00/SF Gross
Desired Term	Sublease through 6/30/25 (longer term possible)



SUITE 30960

1,470 SF



SUITE 30962

DETAILS

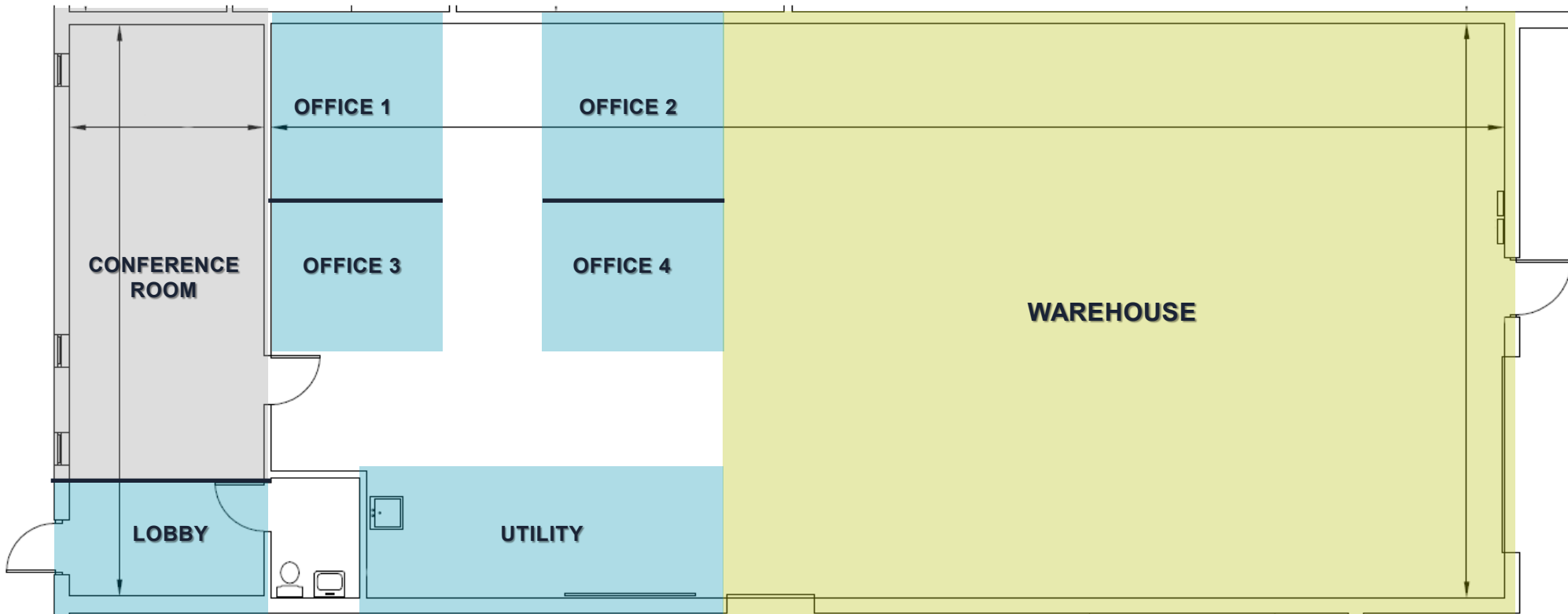
30956-30962 Industrial Rd
Livonia, MI

Address	30962 Industrial Rd, Livonia
Total SF	3,236 SF
Office Area	1,618 SF
Industrial Area	1,618 SF
Property Class	C
Year Built	1978
Stories	1
Roof	Membrane
Construction Type	Masonry
Zoning	Light Industrial
Parcel ID	46-102-99-079-003
Auto Parking	150 total spots
Ceiling Clearance	17'
Docks/Wells	NA
Grade Doors	One (1) 12'x14'
Industrial Area HVAC	Heat only
Industrial Area Lighting	LED
Lunchroom / Breakroom	Yes
Floor Thickness	6"
Lease Rate	10.25/SF Gross
Desired Term	Sublease through 6/30/25 (longer term possible)

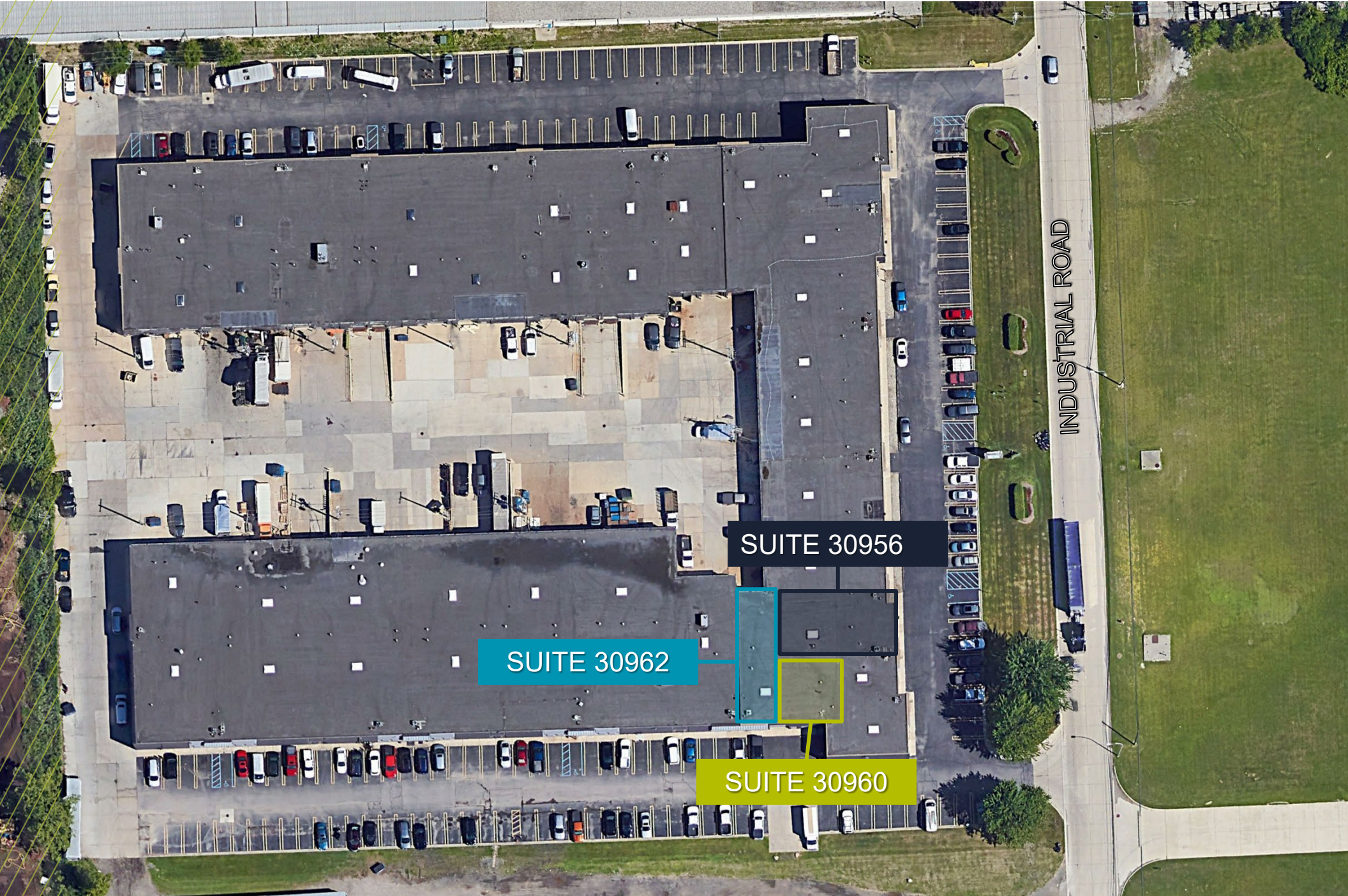


SUITE 30962

3,236 SF



PROPERTY AERIAL



SUITE 30956

SUITE 30962

SUITE 30960

INDUSTRIAL ROAD

CONTACT INFORMATION

CONNER SALSBERY

Director

+1 248 358 6114

conner.salsberry@cushwake.com

TONY AVENDT

Managing Director

+1 248 358 6115

tony.avendt@cushwake.com



©2023 Cushman & Wakefield. All rights reserved. The information contained in this communication is strictly confidential. This information has been obtained from sources believed to be reliable but has not been verified. NO WARRANTY OR REPRESENTATION, EXPRESS OR IMPLIED, IS MADE AS TO THE CONDITION OF THE PROPERTY (OR PROPERTIES) REFERENCED HEREIN OR AS TO THE ACCURACY OR COMPLETENESS OF THE INFORMATION CONTAINED HEREIN, AND SAME IS SUBMITTED SUBJECT TO ERRORS, OMISSIONS, CHANGE OF PRICE, RENTAL OR OTHER CONDITIONS, WITHDRAWAL WITHOUT NOTICE, AND TO ANY SPECIAL LISTING CONDITIONS IMPOSED BY THE PROPERTY OWNER(S). ANY PROJECTIONS, OPINIONS OR ESTIMATES ARE SUBJECT TO UNCERTAINTY AND DO NOT SIGNIFY CURRENT OR FUTURE PROPERTY PERFORMANCE.