

TRI CITY INDUSTRIAL COMPLEX

1445 S. Tippecanoe Ave., Suite 200 | San Bernardino, CA

FOR LEASE
±138,851 SF
(POL ±344,249 SF BUILDING)

Professionally Owned and Managed by:

nuveen

A TIAA Company



Kyle Kehner, SIOR
Executive Director
+1 909 942 4645
kyle.kehner@cushwake.com
Lic. # 01239566

Tim Pimentel, SIOR
Executive Managing Director
+1 909 942 4647
tim.pimentel@cushwake.com
Lic. # 01421452

Milo Lipson
Executive Director
+1 909 942 4648
milo.lipson@cushwake.com
Lic. 01253614

Ryan Velasquez
Senior Director
+1 909 942 4673
ryan.velasquez@cushwake.com
Lic. 01347459



TRI CITY INDUSTRIAL COMPLEX

1445 S. Tippecanoe Ave., Suite 200 | San Bernardino, CA

FOR LEASE
±138,851 SF
(POL ±344,249 SF BUILDING)



PROPERTY FEATURES

- ±5,000 SF of Two-Story Office Space
- POL ±344,249 SF Building
- 32' Minimum Clear Height @ 1st Column 105 Car Parking Stalls
- 137' Concrete Truck Court (Secured)
- 30 Dock High Loading Doors (12 Edge-of-Dock Plates)
- 2 Ground Level Loading Doors
- 52' x 60' Typical Column Spacing
- 800 AMP 480/277 3P – 4,000 AMP UGPS
- ESFR Fire Sprinkler System (K-25 @25 psi)
- 7" Thick Floor Slab, 4,000 psi, FF/FL Rating of 55/35
- T-5 Warehouse Lighting
- 2.5% Skylights
- Immediate Access to I-10 via Tippecanoe Ave. On/Off Ramp
- Corporate Neighbors: Amazon, Kohls, Pep Boys & Stater Brothers

Kyle Kehner, SIOR
Executive Director
+1 909 942 4645
kyle.kehner@cushwake.com
Lic. # 01239566

Tim Pimentel, SIOR
Executive Managing Director
+1 909 942 4647
tim.pimentel@cushwake.com
Lic. # 01421452

Milo Lipson
Executive Director
+1 909 942 4648
milo.lipson@cushwake.com
Lic. 01253614

Ryan Velasquez
Senior Director
+1 909 942 4673
ryan.velasquez@cushwake.com
Lic. 01347459

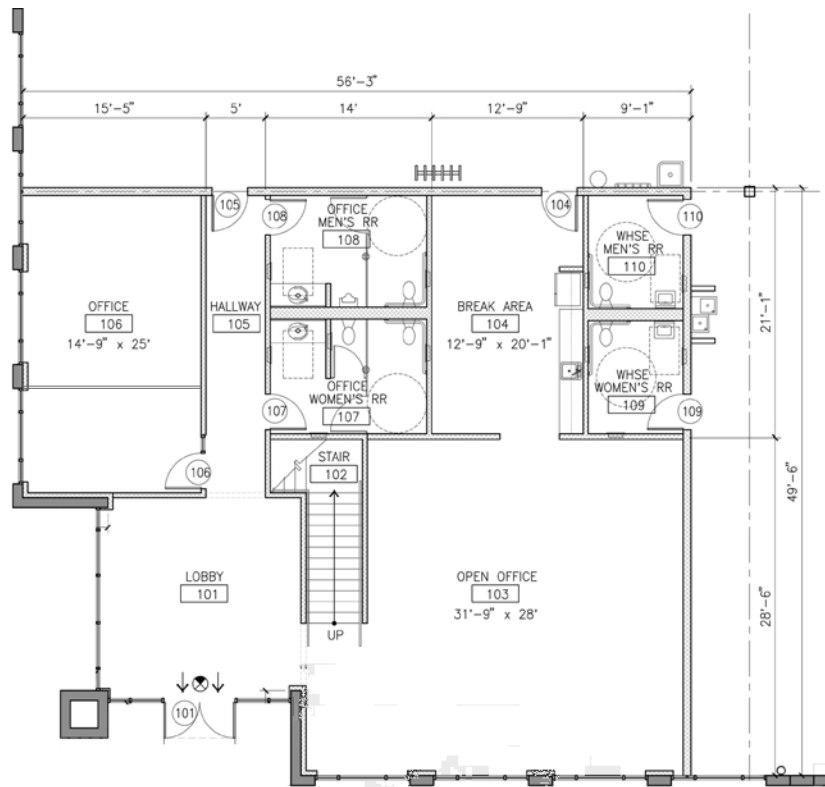


TRI CITY INDUSTRIAL COMPLEX

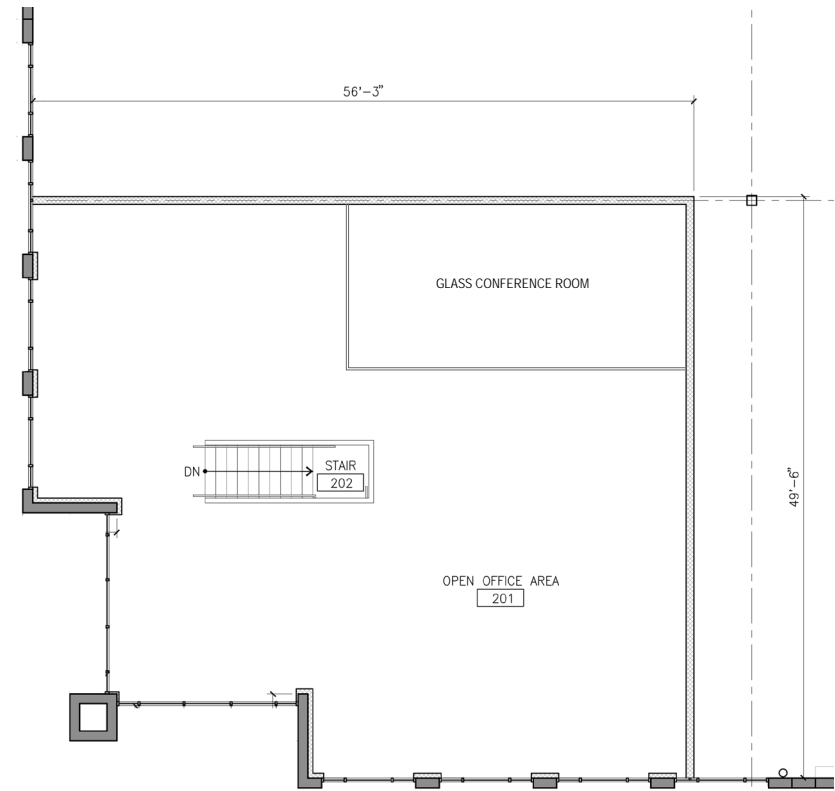
1445 S. Tippecanoe Ave., Suite 200 | San Bernardino, CA

FOR LEASE
±138,851 SF
(POL ±344,249 SF BUILDING)

1st Floor Office



2nd Floor Office



Kyle Kehner, SIOR
Executive Director
+1 909 942 4645
kyle.kehner@cushwake.com
Lic. # 01239566

Tim Pimentel, SIOR
Executive Managing Director
+1 909 942 4647
tim.pimentel@cushwake.com
Lic. # 01421452

Milo Lipson
Executive Director
+1 909 942 4648
milo.lipson@cushwake.com
Lic. 01253614

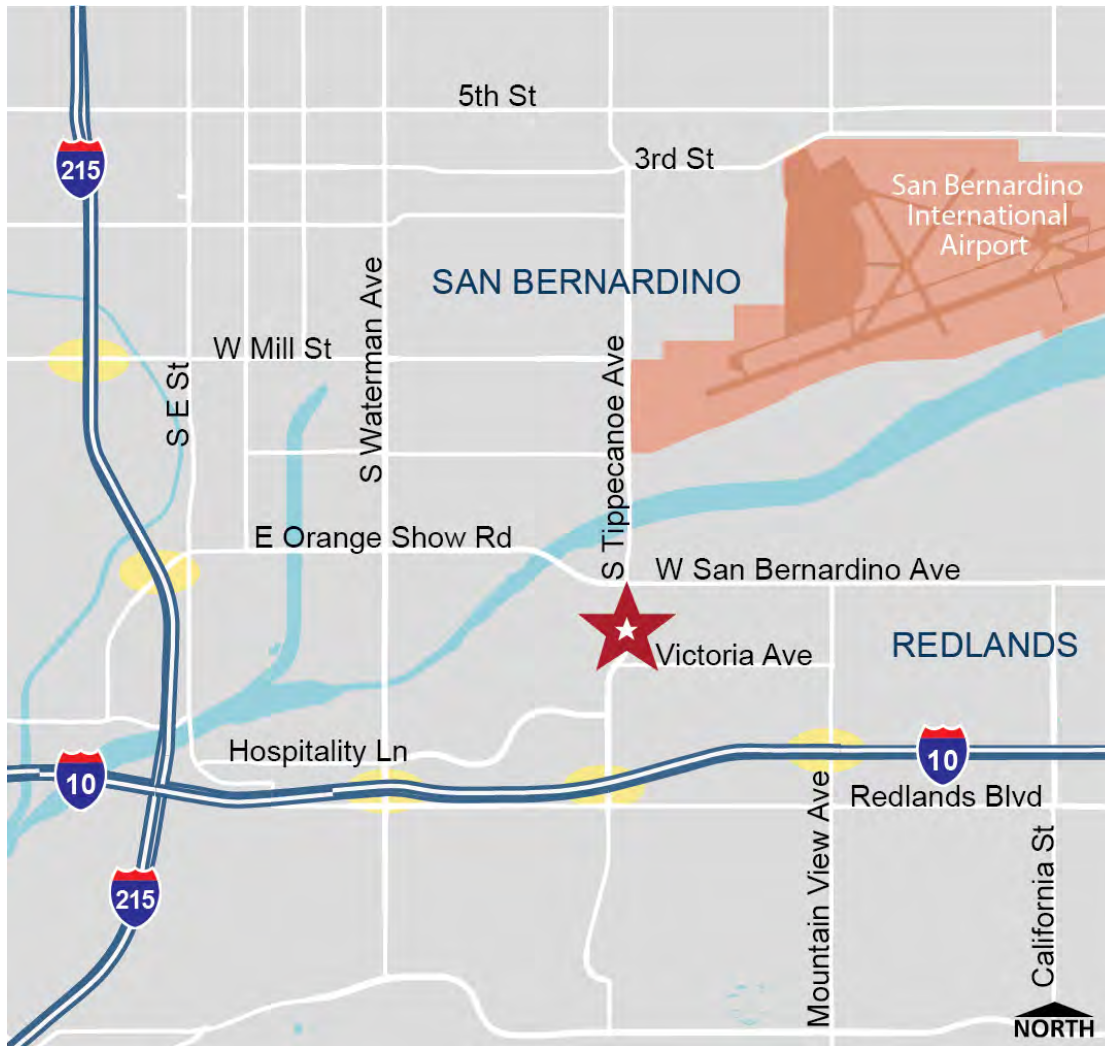
Ryan Velasquez
Senior Director
+1 909 942 4673
ryan.velasquez@cushwake.com
Lic. 01347459



TRI CITY INDUSTRIAL COMPLEX

1445 S. Tippecanoe Ave., Suite 200 | San Bernardino, CA

FOR LEASE
±138,851 SF
(POL ±344,249 SF BUILDING)



Kyle Kehner, SIOR
Executive Director
+1 909 942 4645
kyle.kehner@cushwake.com
Lic. # 01239566

Tim Pimentel, SIOR
Executive Managing Director
+1 909 942 4647
tim.pimentel@cushwake.com
Lic. # 01421452

Milo Lipson
Executive Director
+1 909 942 4648
milo.lipson@cushwake.com
Lic. 01253614

Ryan Velasquez
Senior Director
+1 909 942 4673
ryan.velasquez@cushwake.com
Lic. 01347459



TRI CITY INDUSTRIAL COMPLEX

1445 S. Tippecanoe Ave., Suite 200 | San Bernardino, CA

FOR LEASE
±138,851 SF
(POL ±344,249 SF BUILDING)



Kyle Kehner, SIOR
Executive Director
+1 909 942 4645
kyle.kehner@cushwake.com
Lic. # 01239566

Tim Pimentel, SIOR
Executive Managing Director
+1 909 942 4647
tim.pimentel@cushwake.com
Lic. # 01421452

Milo Lipson
Executive Director
+1 909 942 4648
milo.lipson@cushwake.com
Lic. 01253614

Ryan Velasquez
Senior Director
+1 909 942 4673
ryan.velasquez@cushwake.com
Lic. 01347459



©2023 Cushman & Wakefield. All rights reserved. The information contained in this communication is strictly confidential. This information has been obtained from sources believed to be reliable but has not been verified. NO WARRANTY OR REPRESENTATION, EXPRESS OR IMPLIED, IS MADE AS TO THE CONDITION OF THE PROPERTY (OR PROPERTIES) REFERENCED HEREIN OR AS TO THE ACCURACY OR COMPLETENESS OF THE INFORMATION CONTAINED HEREIN, AND SAME IS SUBMITTED SUBJECT TO ERRORS, OMISSIONS, CHANGE OF PRICE, RENTAL OR OTHER CONDITIONS, WITHDRAWAL WITHOUT NOTICE, AND TO ANY SPECIAL LISTING CONDITIONS IMPOSED BY THE PROPERTY OWNER(S). ANY PROJECTIONS, OPINIONS OR ESTIMATES ARE SUBJECT TO UNCERTAINTY AND DO NOT SIGNIFY CURRENT OR FUTURE PROPERTY PERFORMANCE.