

**FLEXIBLE
SUBLEASE
TERMS**

20201 CAROLINE WAY

RIVERSIDE , CALIFORNIA 92501

FOR SUBLEASE: +200,000 SF Industrial Space



Tim Pimentel, SIOR
+1 909 942 4647
tim.pimentel@cushwake.com
Lic. No: 01421452

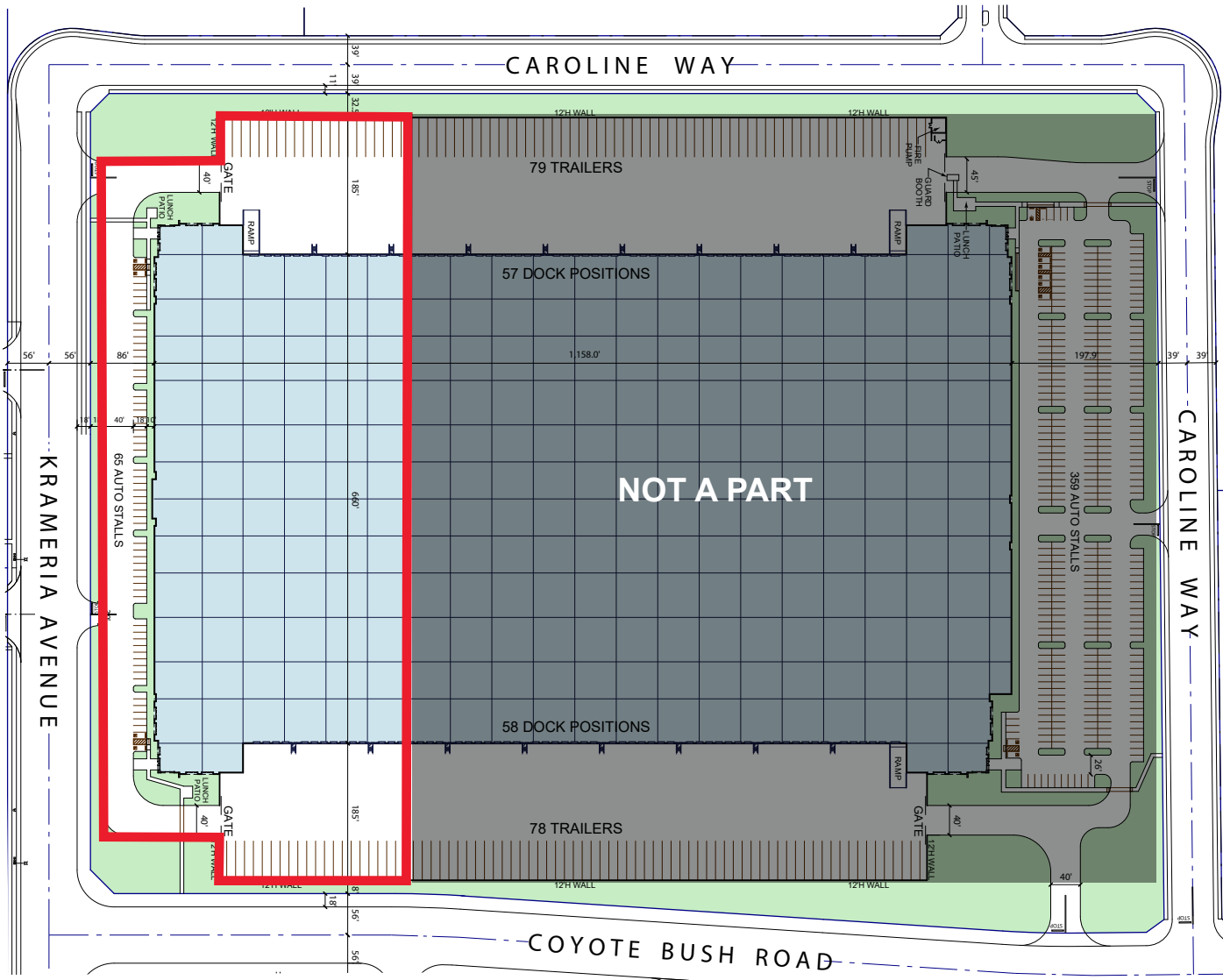
Chris Pimentel
+1 909 942 4600
chris.pimentel@cushwake.com
Lic. No: 02207632

Erik Larson
+1 213 955 5126
erik.larson@cushwake.com
Lic. No: 01213790



20201 CAROLINE WAY

RIVERSIDE, CALIFORNIA 92501



+200,000 SF SUBLEASE

- 40' CLEAR
- 27 DH DOORS
- 1 GL DOOR
- 40 TRAILER STALLS
- ESFR SPRINKLER SYSTEM

©2024 Cushman & Wakefield. All rights reserved. This information has been obtained from sources believed to be reliable but has not been verified. NO WARRANTY OR REPRESENTATION, EXPRESS OR IMPLIED, IS MADE AS TO THE CONDITION OF THE PROPERTY (OR PROPERTIES) REFERENCED HEREIN OR AS TO THE ACCURACY OR COMPLETENESS OF THE INFORMATION CONTAINED HEREIN, AND SAME IS SUBMITTED SUBJECT TO ERRORS, OMISSIONS, CHANGE OF PRICE, RENTAL OR OTHER CONDITIONS, WITHDRAWAL WITHOUT NOTICE, AND TO ANY SPECIAL LISTING CONDITIONS IMPOSED BY THE PROPERTY OWNER(S).

*NOT TO SCALE. ALL DIMENSIONS ARE APPROXIMATE



Tim Pimentel, SIOR
+1 909 942 4647
tim.pimentel@cushwake.com
Lic. No: 01421452

Chris Pimentel
+1 909 942 4600
chris.pimentel@cushwake.com
Lic. No: 02207632

Erik Larson
+1 213 955 5126
erik.larson@cushwake.com
Lic. No: 01213790







Tim Pimentel, SIOR
+1 909 942 4647
tim.pimentel@cushwake.com
Lic. No: 01421452

Chris Pimentel
+1 909 942 4600
chris.pimentel@cushwake.com
Lic. No: 02207632

Erik Larson
+1 213 955 5126
erik.larson@cushwake.com
Lic. No: 01213790

