

1623 LEESON LANE

CORONA / CALIFORNIA 92879

FOR SALE
OR LEASE

62,669 SF
INDUSTRIAL BUILDING



Developed By



MBK
INDUSTRIAL
PROPERTIES

AN MBK REAL ESTATE COMPANY

RYAN VELASQUEZ

Senior Director

+1 909 942 4673

ryan.velasquez@cushwake.com

CA License #01347459

MILO LIPSON

Executive Director

+1 909 942 4648

milo.lipson@cushwake.com

CA License 01253614



**CUSHMAN &
WAKEFIELD**

1623 LEESON LANE

CORONA / CALIFORNIA 92879

FOR SALE OR LEASE

62,669 SF

INDUSTRIAL BUILDING

Developed By



MBK
INDUSTRIAL
PROPERTIES

AN MBK REAL ESTATE COMPANY



// PROPERTY FEATURES //



High Image Distribution Facility



Single-Story Office-to-Suit



32' Minimum Clear Height



ESFR Sprinkler System



7 Dock High Doors (9'x10')



2 Grade Level Doors (12'x14')



800 Amps, 277/480 Volt
(Expandable to 1,200)
Tenant to verify



±3.45 Acres of Land



Secured 175'+ Truck Court



52' x 60' Typical Bay Spacing

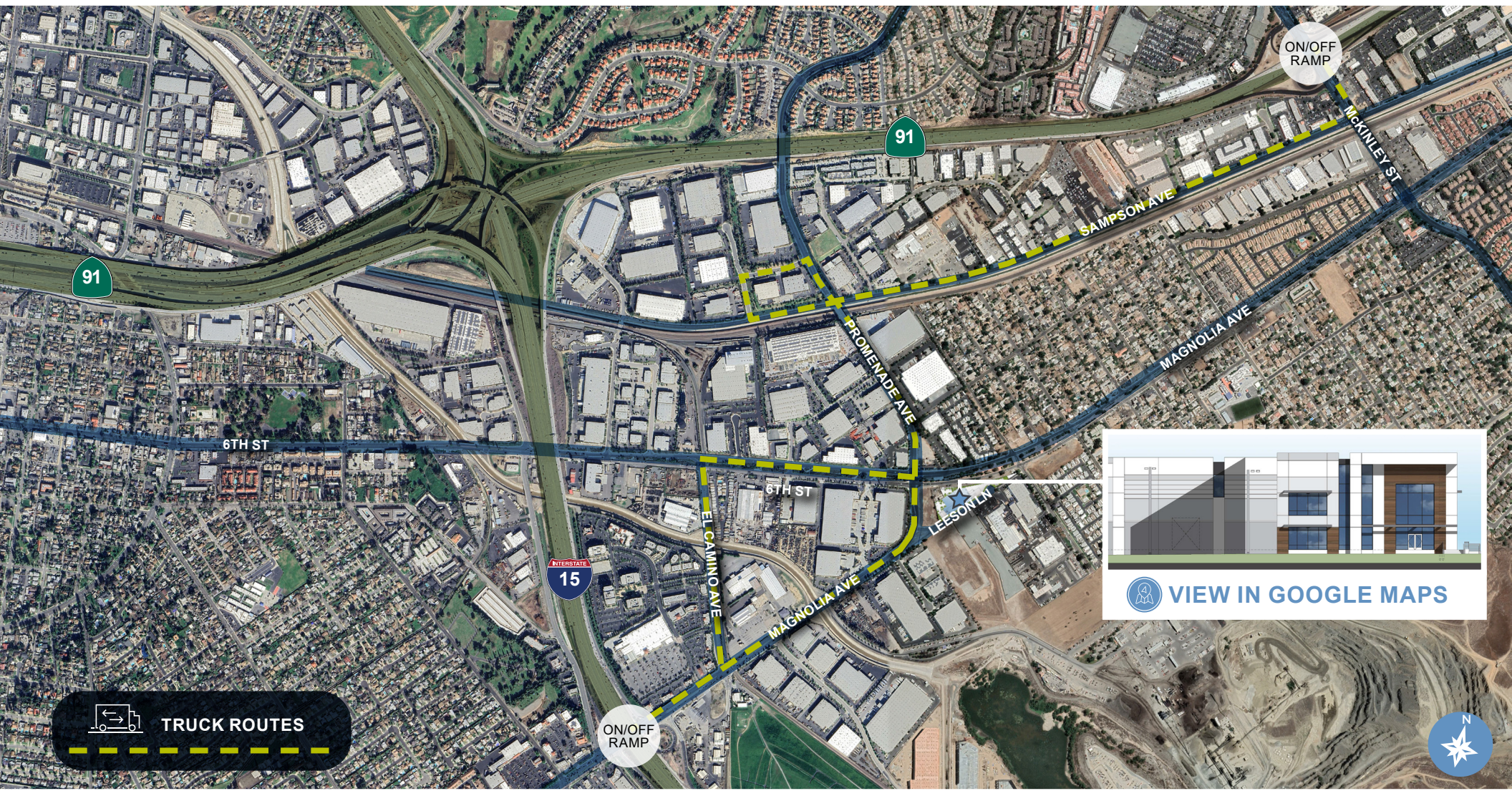
1623 LEESON LANE

CORONA / CALIFORNIA 92879

FOR SALE OR LEASE

62,669 SF

INDUSTRIAL BUILDING




 **TRUCK ROUTES**

ON/OFF RAMP

ON/OFF RAMP



 **VIEW IN GOOGLE MAPS**



RYAN VELASQUEZ | +1 909 942 4673
ryan.velasquez@cushwake.com
CA License #01347459

MILO LIPSON | +1 909 942 4648
milo.lipson@cushwake.com
CA License 01253614



1623 LEESON LANE

CORONA / CALIFORNIA 92879

FOR SALE OR LEASE

62,669 SF

INDUSTRIAL BUILDING



// DRIVE DISTANCES //

0.8 MILES

TO INTERSTATE 15



1.7 MILES

TO HIGHWAY 91

18 MILES

TO ONTARIO INT'L AIRPORT



57 MILES

TO LOS ANGELES INT'L AIRPORT

50 MILES

TO PORT OF LONG BEACH



53 MILES

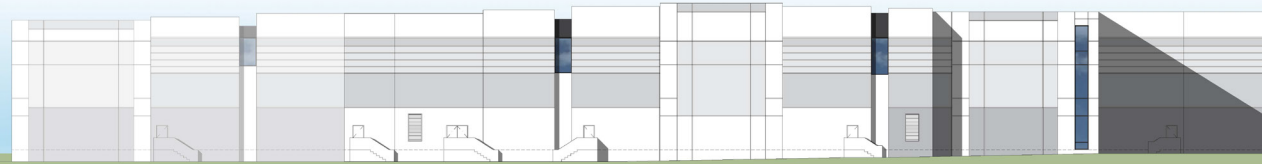
TO PORT OF LOS ANGELES

1623 LEESON LANE

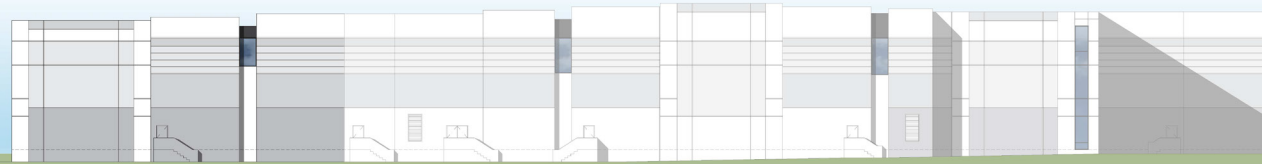
CORONA / CALIFORNIA 92879



FOR SALE OR LEASE
62,669 SF
INDUSTRIAL BUILDING



North Elevation



Northeast Elevation



West Elevation



East Elevation



South Elevation

1623 LEESON LANE

CORONA / CALIFORNIA 92879

FOR SALE OR LEASE
62,669 SF
INDUSTRIAL BUILDING



RYAN VELASQUEZ

Senior Director
+1 909 942 4673
ryan.velasquez@cushwake.com
CA License #01347459

MILO LIPSON

Executive Director
+1 909 942 4648
milo.lipson@cushwake.com
CA License 01253614

