

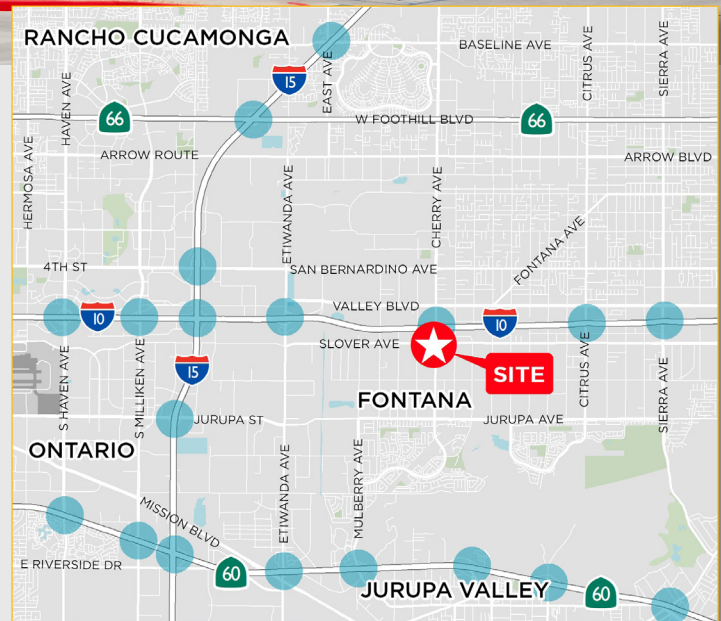
FOR LEASE  
± 165,327 SF INDUSTRIAL BUILDING

14457 SLOVER AVENUE  
FONTANA, CA



## PROPERTY FEATURES

- Inland Empire West Location
- Class A Warehouse Situated on 7.36 Acres
- 36' Clear Height
- 5,552 SF Ground Floor Offices / 5,254 SF Mezzanine
- 21 Dock High / 1 Ground Level Door
- 50 Trailer Parking Stalls
- 55 Auto Parking Spaces
- 134' - 253' Secured Truck Yard
- ESFR Sprinkler System
- 2,000 Amps 480v, 3 Phase Electrical (expandable to 3,000 Amps)
- Excellent Access to I-10 Freeway via Cherry Ave on /off ramps



For further information, please contact Exclusive Agents:

**Brice Larson**

909 942 4642  
brice.larson@cushwake.com  
Lic. No: 02056356

**Chuck Belden, SIOR**

909 942 4640  
chuck.belden@cushwake.com  
Lic. No: 00844840

**Tim Pimentel, SIOR**

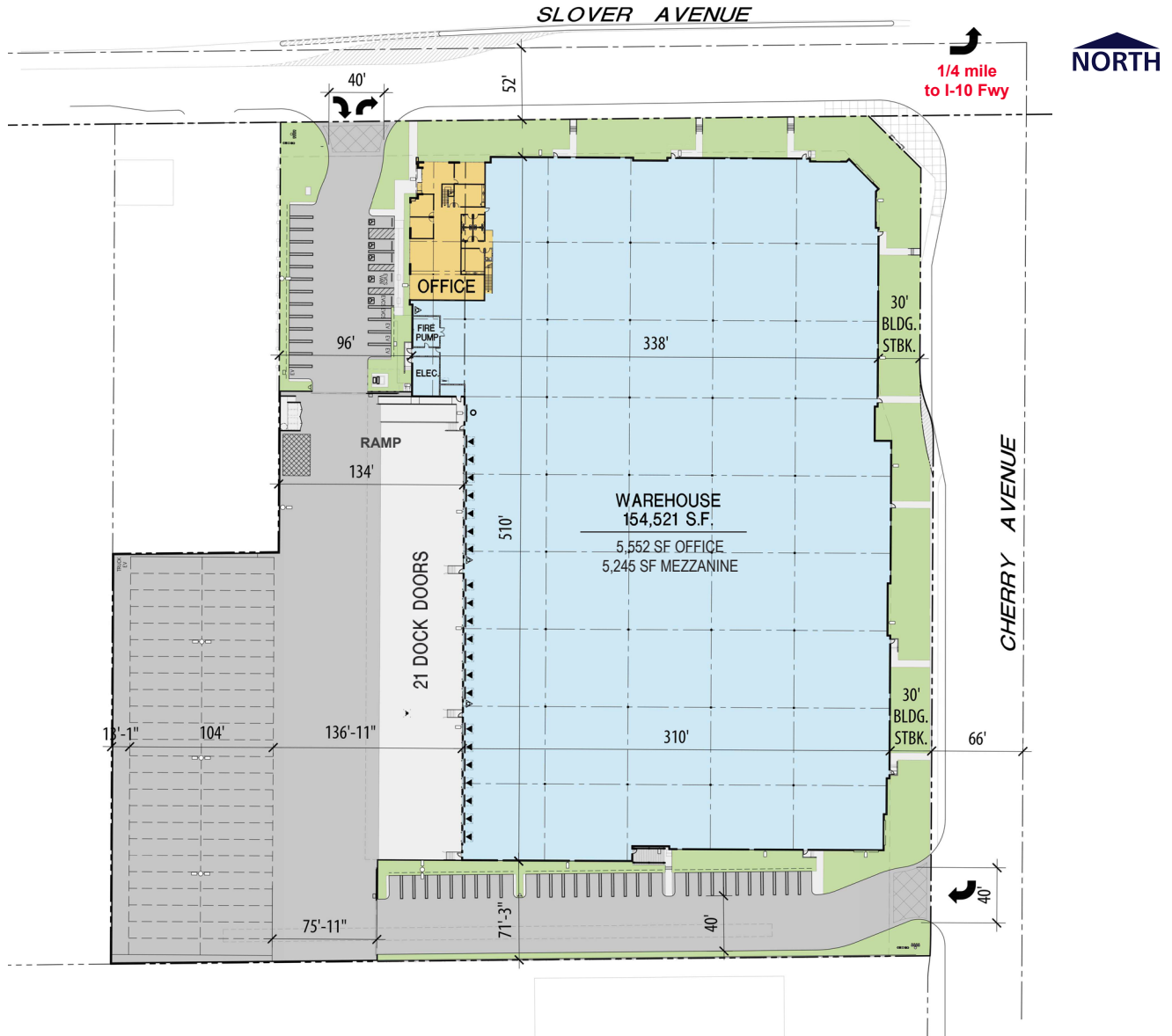
909 942 4647  
tim.pimentel@cushwake.com  
Lic. No: 01421452

**Chris Pimentel**

909 942 4600  
chris.pimentel@cushwake.com  
Lic. No: 02207362

**± 165,327 SF**

# 14457 SLOVER AVENUE FONTANA, CA



Cushman & Wakefield Copyright 2024. No warranty or representation, express or implied, is made to the accuracy or completeness of the information contained herein, and same is submitted subject to errors, omissions, change of price, rental or other conditions, withdrawal without notice, and to any special listing conditions imposed by the property owner. As applicable, we make no representation as to the condition of the property (or properties) in question.

Another Project by:



For further information, please contact Exclusive Agents:

**Brice Larson**  
909 942 4642  
brice.larson@cushwake.com  
Lic. No: 02056356

**Chuck Belden, SIOR**  
909 942 4640  
chuck.belden@cushwake.com  
Lic. No: 00844840

**Tim Pimentel, SIOR**  
909 942 4647  
tim.pimentel@cushwake.com  
Lic. No: 01421452

**Chris Pimentel**  
909 942 4600  
chris.pimentel@cushwake.com  
Lic. No: 02207362

Cushman & Wakefield - Ontario // 901 N. Via Piemonte, Suite 200 // Ontario, CA 91764 // www.cushmanwakefield.com



± 165,327 SF

# 14457 SLOVER AVENUE FONTANA, CA



Cushman & Wakefield Copyright 2024. No warranty or representation, express or implied, is made to the accuracy or completeness of the information contained herein, and same is submitted subject to errors, omissions, change of price, rental or other conditions, withdrawal without notice, and to any special listing conditions imposed by the property owner. As applicable, we make no representation as to the condition of the property (or properties) in question.

Another Project by:



For further information, please contact Exclusive Agents:

**Brice Larson**  
909 942 4642  
brice.larson@cushwake.com  
Lic. No: 02056356

**Chuck Belden, SIOR**  
909 942 4640  
chuck.belden@cushwake.com  
Lic. No: 00844840

**Tim Pimentel, SIOR**  
909 942 4647  
tim.pimentel@cushwake.com  
Lic. No: 01421452

**Chris Pimentel**  
909 942 4600  
chris.pimentel@cushwake.com  
Lic. No: 02207362

Cushman & Wakefield - Ontario // 901 N. Via Piemonte, Suite 200 // Ontario, CA 91764 // [www.cushmanwakefield.com](http://www.cushmanwakefield.com)



± 165,327 SF

# 14457 SLOVER AVENUE FONTANA, CA

## CORPORATE OCCUPIERS



For further information, please contact Exclusive Agents:

**Brice Larson**  
 909 942 4642  
 brice.larson@cushwake.com  
 Lic. No: 02056356

**Chuck Belden, SIOR**  
 909 942 4640  
 chuck.belden@cushwake.com  
 Lic. No: 00844840

**Tim Pimentel, SIOR**  
 909 942 4647  
 tim.pimentel@cushwake.com  
 Lic. No: 01421452

**Chris Pimentel**  
 909 942 4600  
 chris.pimentel@cushwake.com  
 Lic. No: 02207362