



LOGISTICS[®]
PROPERTY
CO

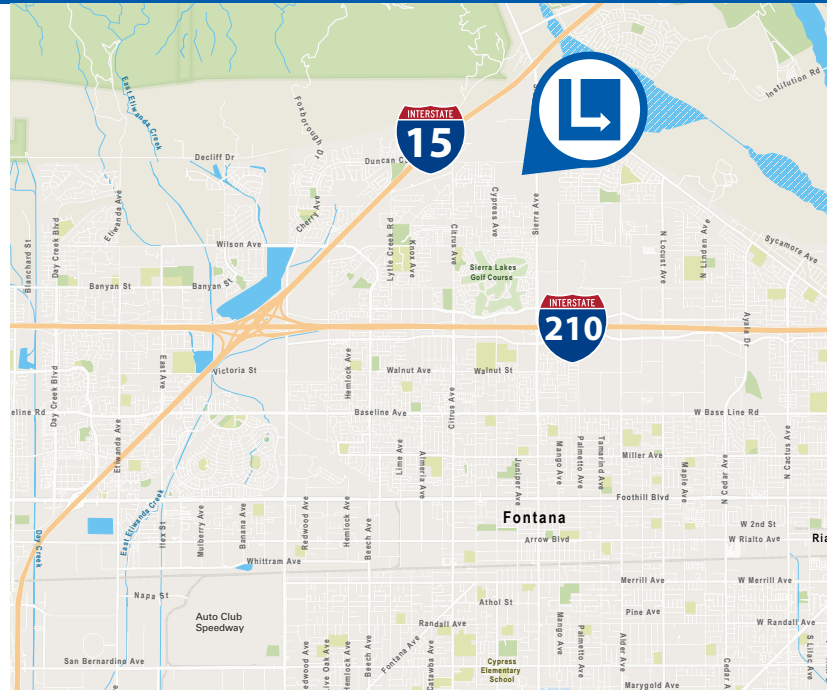
NORTH FONTANA LOGISTICS CENTER BUILDING 2

4957 Sierra Avenue, Fontana, CA



± 86,282 SF | AVAILABLE Q4 2024

- ± 86,282 SF freestanding industrial building (Building 1: ± 288,345 SF also available for lease)
- 14 dock doors
- 2 grade level loading doors
- 32' clear height
- ± 2,500 SF of spec, single floor office space
- 60' x 52' column spacing
- Large fenced yard
- 129'8" truck court
- 1,200 Amps, 480/277 Volts power (expandable to 2,000 Amps)
- ESFR sprinkler system (K25 heads at 25 PSI)
- 65 auto parking spaces
- Located on Sierra Avenue, North of the 210 Freeway
- Excellent access to 210 & 15 Freeways



NEWMARK

Randy Lockhart

+1 909 974 4067 | randy.lockhart@nrmk.com | CA RE Lic. #00974981

Steve Sprenger

+1 909 974 4078 | steve.sprenger@nrmk.com | CA RE Lic. #01202806

Sid Osborn

+1 909 942 4644 | sid.osborn@cushwake.com | CA RE Lic. #00685745

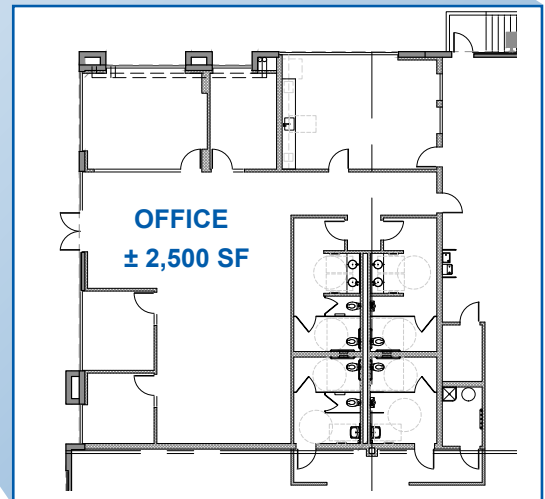
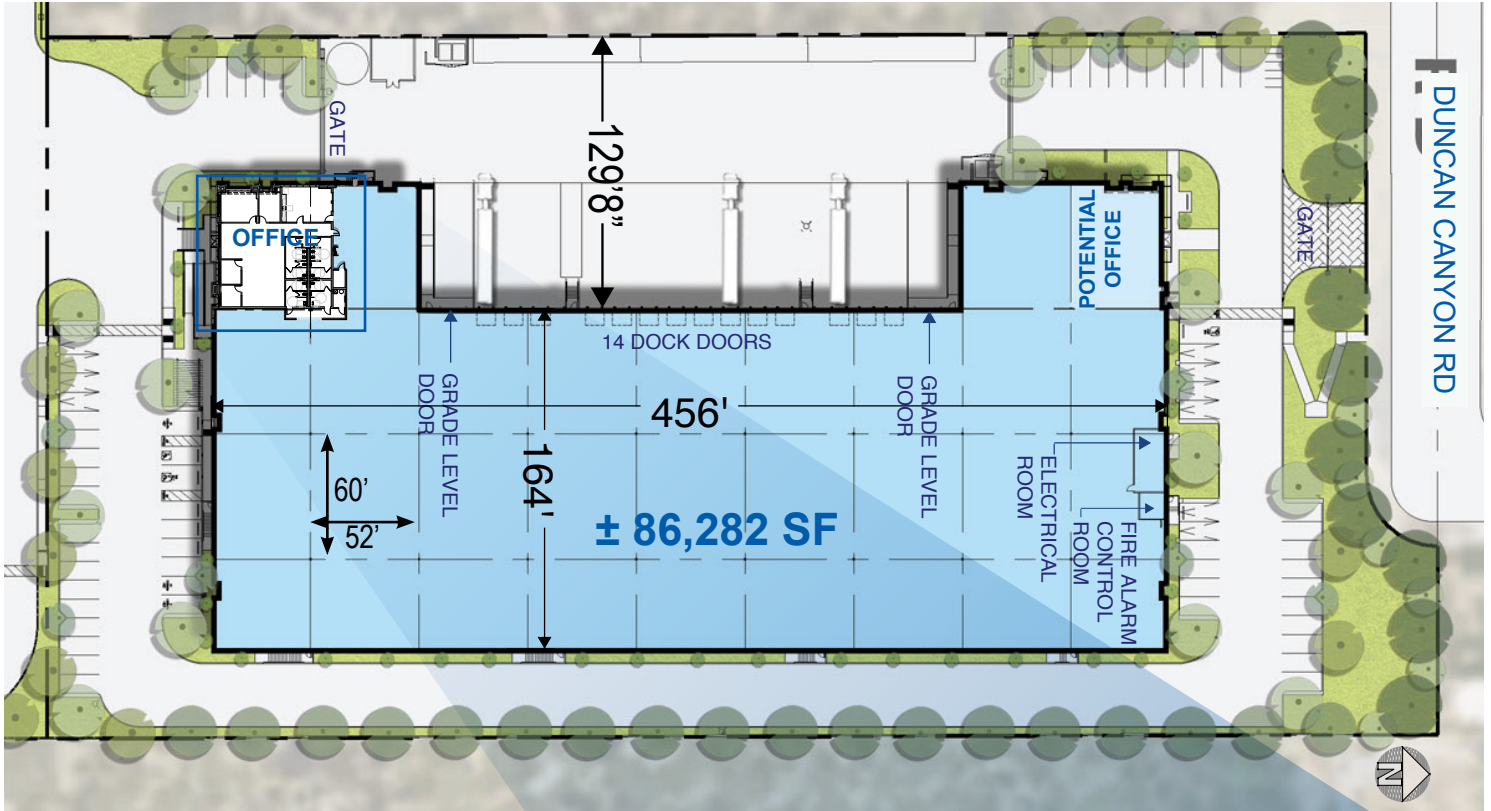




LOGISTICS[®]
PROPERTY
CO

NORTH FONTANA LOGISTICS CENTER BUILDING 2

4957 Sierra Avenue, Fontana, CA



The information contained herein has been obtained from sources deemed reliable but has not been verified and no guarantee, warranty or representation, either express or implied, is made with respect to such information. Terms of sale or lease and availability are subject to change or withdrawal without notice. **NEWMARK** - Corporate License #01355491

NEWMARK

Randy Lockhart

+1 909 974 4067 | randy.lockhart@nmrk.com | CA RE Lic. #00974981

Steve Sprenger

+1 909 974 4078 | steve.sprenger@nmrk.com | CA RE Lic. #01202806

Sid Osborn

+1 909 942 4644 | sid.osborn@cushwake.com | CA RE Lic. #00685745





LOGISTICS[®]
PROPERTY
CO

NORTH FONTANA LOGISTICS CENTER

4957 Sierra Avenue, Fontana, CA



NEWMARK



Randy Lockhart

+1 909 974 4067 | randy.lockhart@nmrk.com | CA RE Lic. #00974981

Sid Osborn

+1 909 942 4644 | sid.osborn@cushwake.com | CA RE Lic. #00685745

Steve Sprenger

+1 909 974 4078 | steve.sprenger@nmrk.com | CA RE Lic. #01202806

