



CAMINO SANTA FE BUSINESS PARK

8320, 8340, 8360, 8375, 8380, 8395, 8445
Camino Santa Fe, San Diego, CA 92121





CAMINO SANTA FE BUSINESS PARK

8320, 8340, 8360, 8375, 8380, 8395, 8445
Camino Santa Fe, San Diego, CA 92121



172,743 SQ FT
RENTABLE AREA



DOCK / GRADE
LOADING



16' - 22'
CLEAR HEIGHT



WESTERN MIRAMAR
LOCATION



BRANT ABERG, SIOR
direct: 858.546.5464
mobile: 858.413.5600
brant.aberg@cushwake.com
CA Lic. 01773573

RYAN DOWNING, SIOR
direct: 858.546.5416
mobile: 760.840.1164
ryan.downing@cushwake.com
CA Lic. 01955032

JACK TICE
direct: 619.500.7626
mobile: 619.368.9358
jack.tice@cushwake.com
CA Lic. 02161178

 **CUSHMAN &
WAKEFIELD**
12830 El Camino Real, Suite 100 | San Diego, CA 92130
858.452.6500 | 858.630.6320 | cushmanwakefield.com



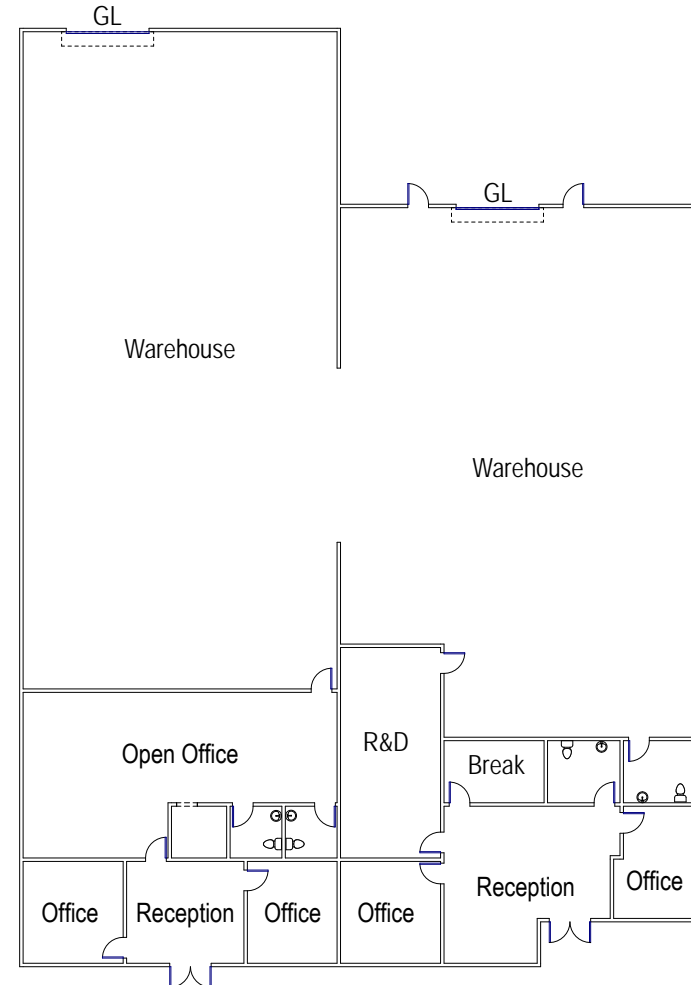
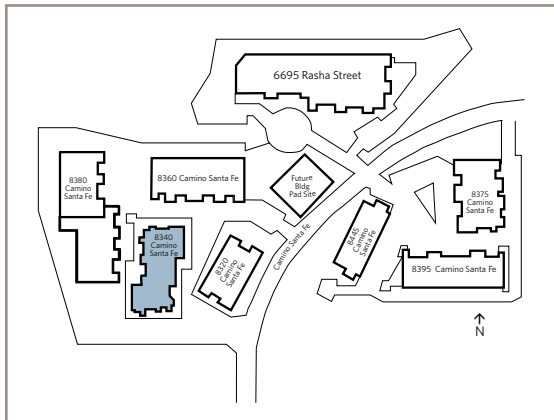
CAMINO SANTA FE BUSINESS PARK

8320, 8340, 8360, 8375, 8380, 8395, 8445
Camino Santa Fe, San Diego, CA 92121

Available Suite

**8340 CAMINO SANTA FE
SUITE D/E | 8,944 SF**

- 30% office / 70% warehouse
- (2) grade level loading doors
- Lease Rate: Negotiable
- NNNs = \$0.55 PSF/Month



**Floorplan to be Verified*

BRANT ABERG, SIOR

direct: 858.546.5464

mobile: 858.413.5600

brant.aberg@cushwake.com

CA Lic. 01773573

RYAN DOWNING, SIOR

direct: 858.546.5416

mobile: 760.840.1164

ryan.downing@cushwake.com

CA Lic. 01955032

JACK TICE

direct: 619.500.7626

mobile: 619.368.9358

jack.tice@cushwake.com

CA Lic. 02161178



**CUSHMAN &
WAKEFIELD**

12830 El Camino Real, Suite 100 | San Diego, CA 92130
858.452.6500 | 858.630.6320 | cushmanwakefield.com



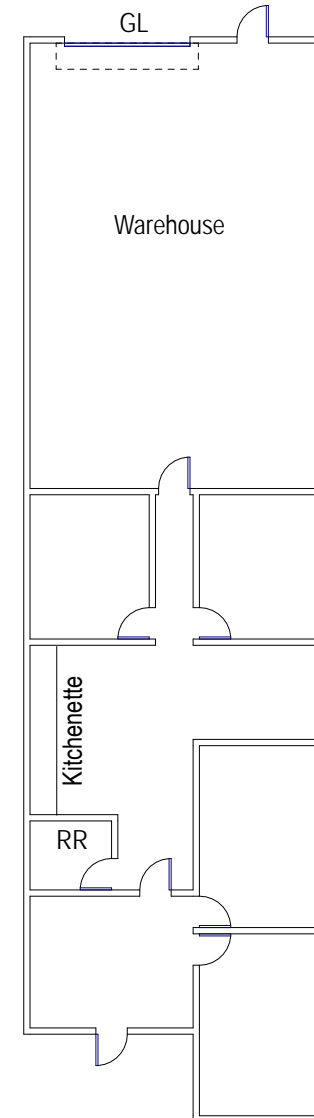
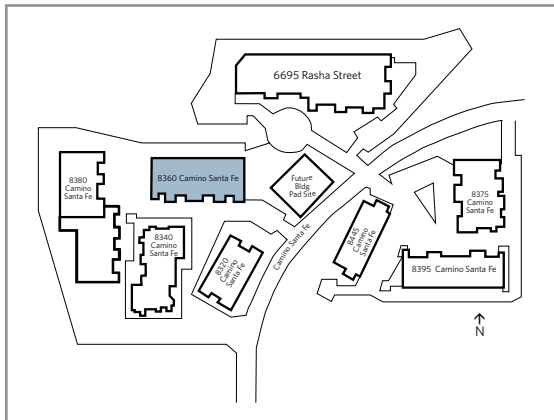
CAMINO SANTA FE BUSINESS PARK

8320, 8340, 8360, 8375, 8380, 8395, 8445
Camino Santa Fe, San Diego, CA 92121

Available Suite

**8360 CAMINO SANTA FE
SUITE E | 2,192 SF**

- 60% office / 40% warehouse
- (1) grade level loading door
- Lease Rate: Negotiable
- NNNs = \$0.55 PSF/Month



**Floorplan to be Verified*

BRANT ABERG, SIOR

direct: 858.546.5464

mobile: 858.413.5600

brant.aberg@cushwake.com

CA Lic. 01773573

RYAN DOWNING, SIOR

direct: 858.546.5416

mobile: 760.840.1164

ryan.downing@cushwake.com

CA Lic. 01955032

JACK TICE

direct: 619.500.7626

mobile: 619.368.9358

jack.tice@cushwake.com

CA Lic. 02161178



**CUSHMAN &
WAKEFIELD**

12830 El Camino Real, Suite 100 | San Diego, CA 92130
858.452.6500 | 858.630.6320 | cushmanwakefield.com



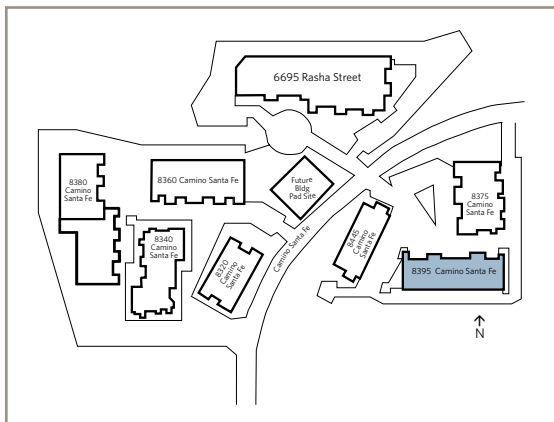
CAMINO SANTA FE BUSINESS PARK

8320, 8340, 8360, 8375, 8380, 8395, 8445
Camino Santa Fe, San Diego, CA 92121

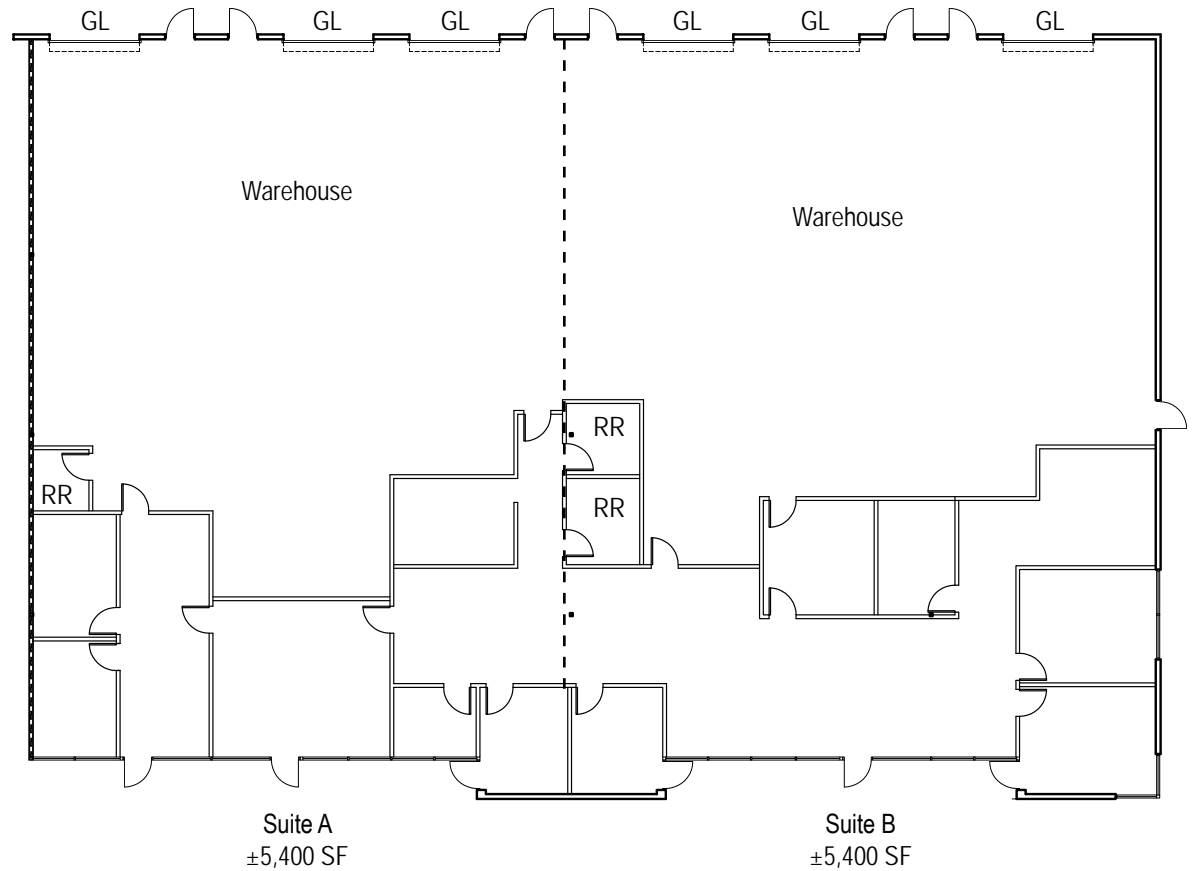
Available Suite

8395 CAMINO SANTA FE SUITE ABC | 10,875 SF

- Details pending
- Divisible to approximately 5,400 SF
- (6) grade level loading doors
- Construction in progress
- Estimated delivery date of proposed plan is May 2025
- Lease Rate: Negotiable
- NNNs = \$0.55 PSF/Month



PROPOSED FLOOR PLAN



**Floorplan to be Verified*

BRANT ABERG, SIOR

direct: 858.546.5464
mobile: 858.413.5600
brant.aberg@cushwake.com
CA Lic. 01773573

RYAN DOWNING, SIOR

direct: 858.546.5416
mobile: 760.840.1164
ryan.downing@cushwake.com
CA Lic. 01955032

JACK TICE

direct: 619.500.7626
mobile: 619.368.9358
jack.tice@cushwake.com
CA Lic. 02161178



12830 El Camino Real, Suite 100 | San Diego, CA 92130
858.452.6500 | 858.630.6320 | cushmanwakefield.com



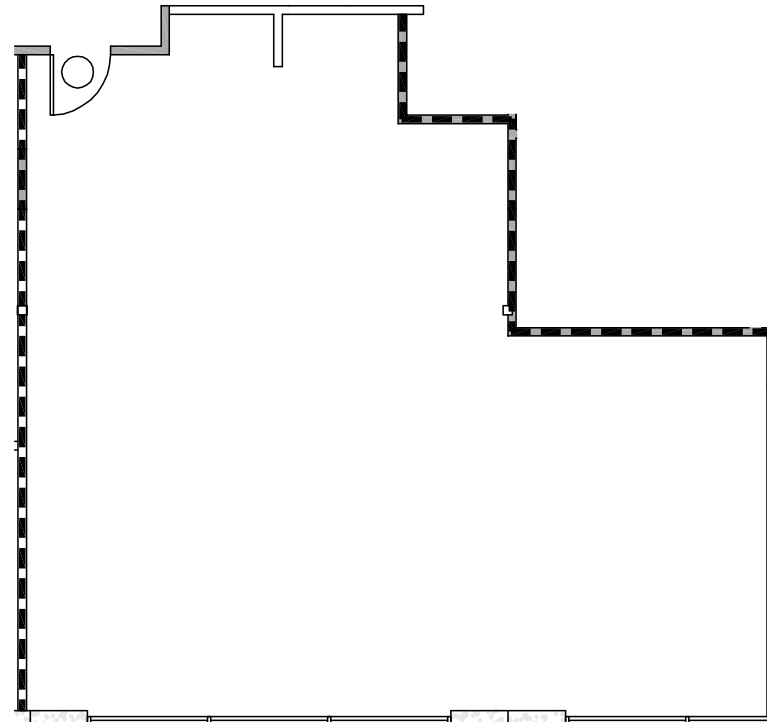
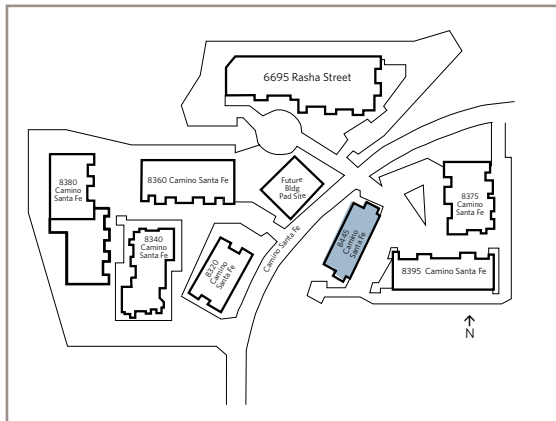
CAMINO SANTA FE BUSINESS PARK

8320, 8340, 8360, 8375, 8380, 8395, 8445
Camino Santa Fe, San Diego, CA 92121

Available Suite

**8445 CAMINO SANTA FE
SUITE 208 | 1,245 SF**

- Month-to-month and short term leases will be considered
- Open office
- Lease Rate: \$2,117/month + Electric



**Floorplan to be Verified*

BRANT ABERG, SIOR

direct: 858.546.5464

mobile: 858.413.5600

brant.aberg@cushwake.com

CA Lic. 01773573

RYAN DOWNING, SIOR

direct: 858.546.5416

mobile: 760.840.1164

ryan.downing@cushwake.com

CA Lic. 01955032

JACK TICE

direct: 619.500.7626

mobile: 619.368.9358

jack.tice@cushwake.com

CA Lic. 02161178



12830 El Camino Real, Suite 100 | San Diego, CA 92130
858.452.6500 | 858.630.6320 | cushmanwakefield.com



CAMINO SANTA FE BUSINESS PARK

8320, 8340, 8360, 8375, 8380, 8395, 8445
Camino Santa Fe, San Diego, CA 92121



©Cushman & Wakefield. All rights reserved. This information has been obtained from sources believed to be reliable but has not been verified. NO WARRANTY OR REPRESENTATION, EXPRESS OR IMPLIED, IS MADE AS TO THE CONDITION OF THE PROPERTY (OR PROPERTIES) REFERENCED HEREIN OR AS TO THE ACCURACY OR COMPLETENESS OF THE INFORMATION CONTAINED HEREIN, AND SAME IS SUBMITTED SUBJECT TO ERRORS, OMISSIONS, CHANGE OF PRICE, RENTAL OR OTHER CONDITIONS, WITHDRAWAL WITHOUT NOTICE, AND TO ANY SPECIAL LISTING CONDITIONS IMPOSED BY THE PROPERTY OWNER(S).

BRANT ABERG, SIOR

direct: 858.546.5464

mobile: 858.413.5600

brant.aberg@cushwake.com

CA Lic. 01773573

RYAN DOWNING, SIOR

direct: 858.546.5416

mobile: 760.840.1164

ryan.downing@cushwake.com

CA Lic. 01955032

JACK TICE

direct: 619.500.7626

mobile: 619.368.9358

jack.tice@cushwake.com

CA Lic. 02161178



12830 El Camino Real, Suite 100 | San Diego, CA 92130
858.452.6500 | 858.630.6320 | cushmanwakefield.com