

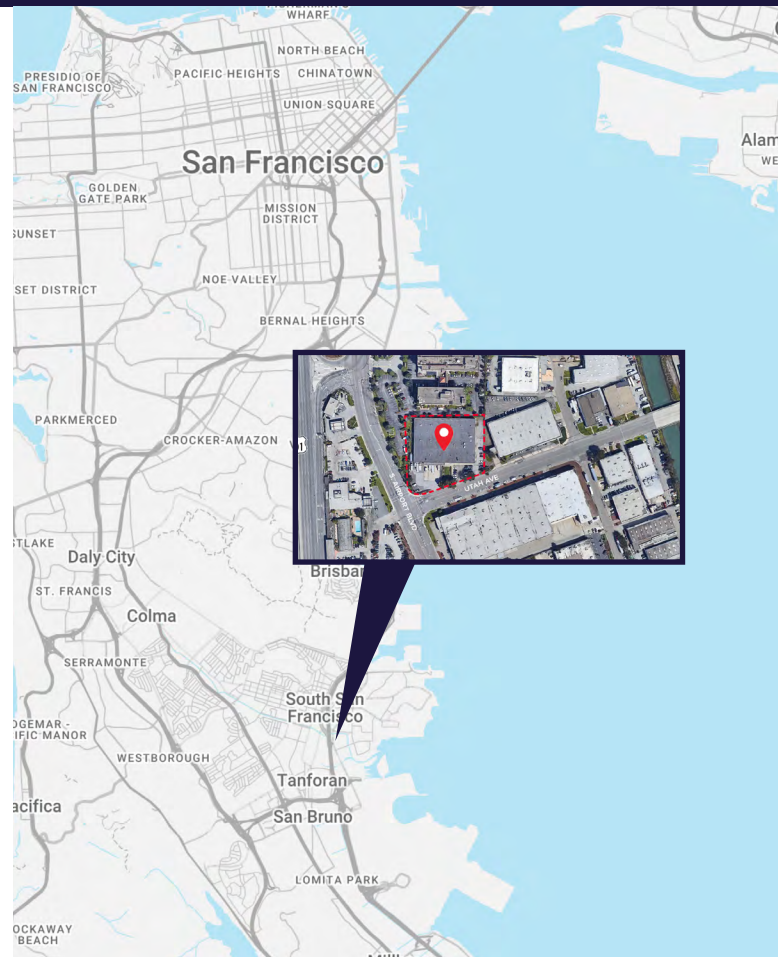
SHORT TERM LEASE/PARKING OPPORTUNITY BELOW MARKET RENT



101 UTAH AVENUE | SOUTH SAN FRANCISCO

BUILDING HIGHLIGHTS

Building Size	43,188 SF
Office	7,500 SF
Clear Height	16' - 17'
Parking	20+ Spaces
Year Built	1978
Site Size	1.86 AC
Trailer Stalls	3+
Asking	Negotiable
Available Space	43,188 SF
Availability	Starting June 1, 2025 potentially sooner
Drive-Ins	1-8'W X 12'H
Zoning	M1
Industrial	35,688 SF
Loading Docks	4
Sprinklers	Yes



MITCH HERTZ
Executive Director
+1 925 274 2803
mitch.hertz@cushwake.com
Lic #01161729

JOHN LEWERENZ
Managing Director
+1 415 710 5826
john.lewerenz@cushwake.com
Lic #01100835

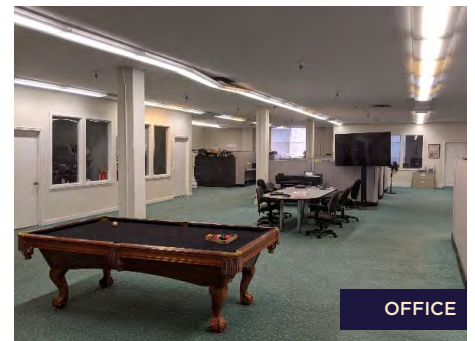
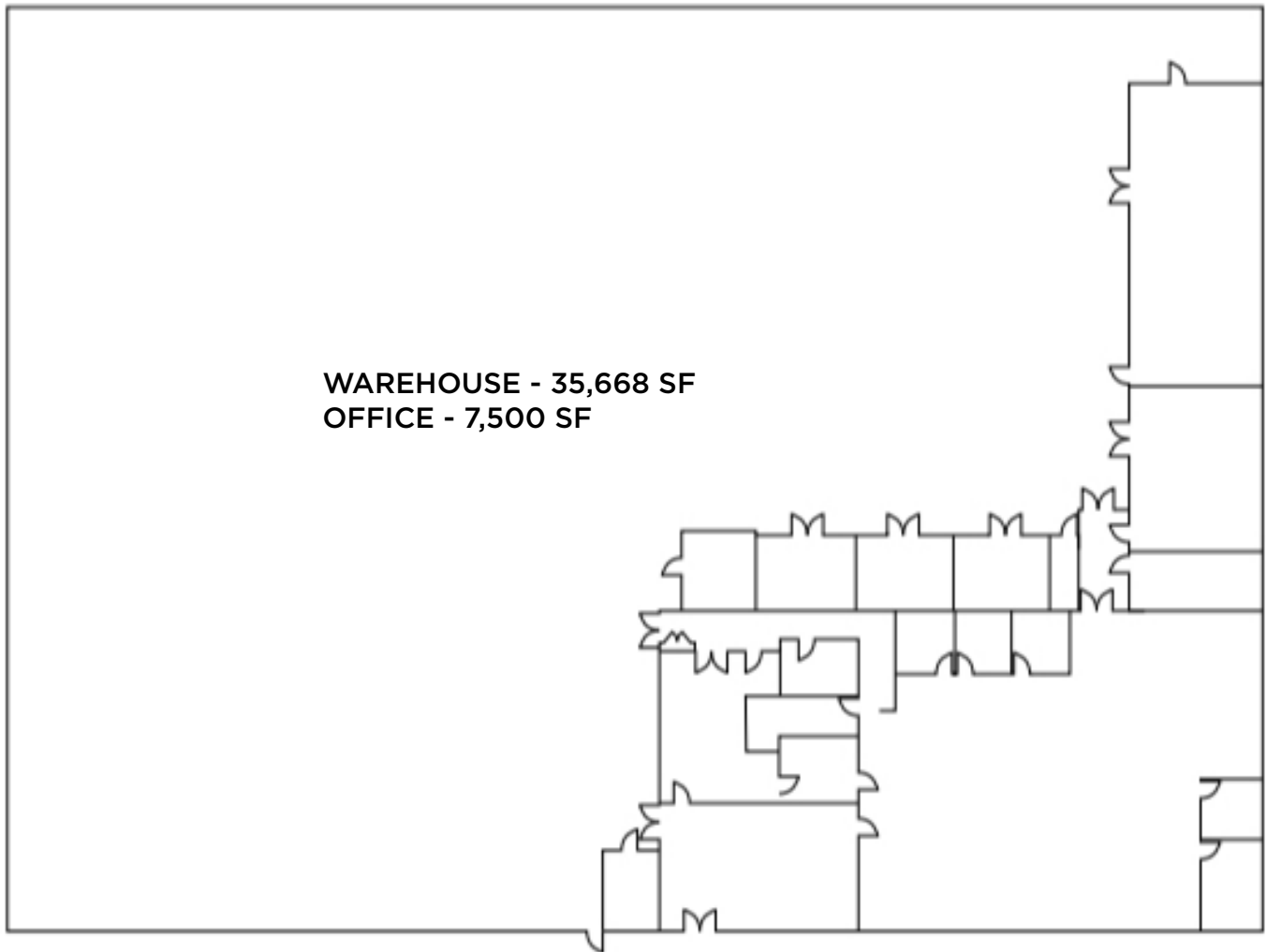
JOSH HERTZ
Associate
+1 925 876 5743
josh.hertz@cushwake.com
Lic #02245870



FOR LEASE:

101 UTAH AVENUE SOUTH SAN FRANCISCO

FLOOR PLAN



©2024 Cushman & Wakefield. All rights reserved. The information contained in this communication is strictly confidential. This information has been obtained from sources believed to be reliable but has not been verified. NO WARRANTY OR REPRESENTATION, EXPRESS OR IMPLIED, IS MADE AS TO THE CONDITION OF THE PROPERTY (OR PROPERTIES) REFERENCED HEREIN OR AS TO THE ACCURACY OR COMPLETENESS OF THE INFORMATION CONTAINED HEREIN, AND SAME IS SUBMITTED SUBJECT TO ERRORS, OMISSIONS, CHANGE OF PRICE, RENTAL OR OTHER CONDITIONS, WITHDRAWAL WITHOUT NOTICE, AND TO ANY SPECIAL LISTING CONDITIONS IMPOSED BY THE PROPERTY OWNER(S). ANY PROJECTIONS, OPINIONS OR ESTIMATES ARE SUBJECT TO UNCERTAINTY AND DO NOT SIGNIFY CURRENT OR FUTURE PROPERTY PERFORMANCE.

MITCH HERTZ
Executive Director
+1 925 274 2803
mitch.hertz@cushwake.com
Lic #01161729

JOHN LEWERENZ
Managing Director
+1 415 710 5826
john.lewerenz@cushwake.com
Lic #01100835

JOSH HERTZ
Associate
+1 925 876 5743
josh.hertz@cushwake.com
Lic #02245870

