



PRIME LIGHT INDUSTRIAL/WAREHOUSE SPACE | **FOR LEASE**

30 MICRO COURT UNIT 10-13

London, ON N6E 2T5

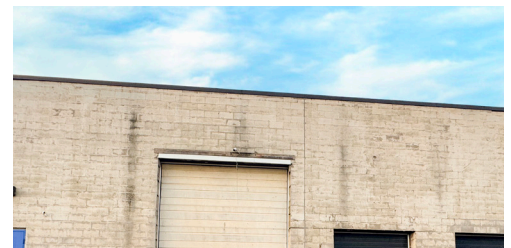
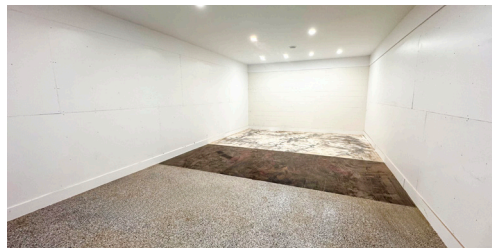


ABOUT THE PROPERTY

Prime light industrial/warehouse/commercial building for lease in south London

UNITS	AVAILABLE SPACE	ASKING NET RENT	ADDITIONAL RENT
10-13	Approx. 6,000 SF	\$10.50 PSF Net	\$3.75 PSF + utilities

- **Zoning:** LI1 - permits a wide range of uses
- **Clear Height:** 16-18'
- **Grade and Dock Loading Door:** 1 at the rear of the space
- Gas heat
- Utilities separately metered in tenant's name
- Located on Micro Court, just off Newbold Street and Bradley Avenue
- Quick access to Highbury Avenue, Hwy 401 and Hwy 402



TYLER DESJARDINE
Sales Representative
 519 438 5403
 tyler.desjardine@cushwakeswo.com

CUSHMAN & WAKEFIELD
SOUTHWESTERN ONTARIO
 850 Medway Park Dr, Suite 201
 London, Ontario N6G 5C6
www.cushwakeswo.com

CUSHMAN & WAKEFIELD
 Southwestern Ontario