

BERING/ZANKER BUSINESS PARK

±7,200 SF - ±11,214 SF AVAILABLE | SAN JOSE, CA



For more information, please contact:

Steve Pace
Executive Director
P +1 408 615 3419
steve.pace@cushwake.com
LIC #00817396

Dan Hollingsworth
Executive Managing Director
P +1 408 615 3431
dan.hollingsworth@cushwake.com
LIC #01117716



DOLLINGER PROPERTIES



CUSHMAN &
WAKEFIELD

Current Availabilities

- 2367 Bering Dr: ± 7,200 SF
- 2387 Bering Dr: ± 8,989 SF
- 2307 Bering Dr: ± 11,214 SF

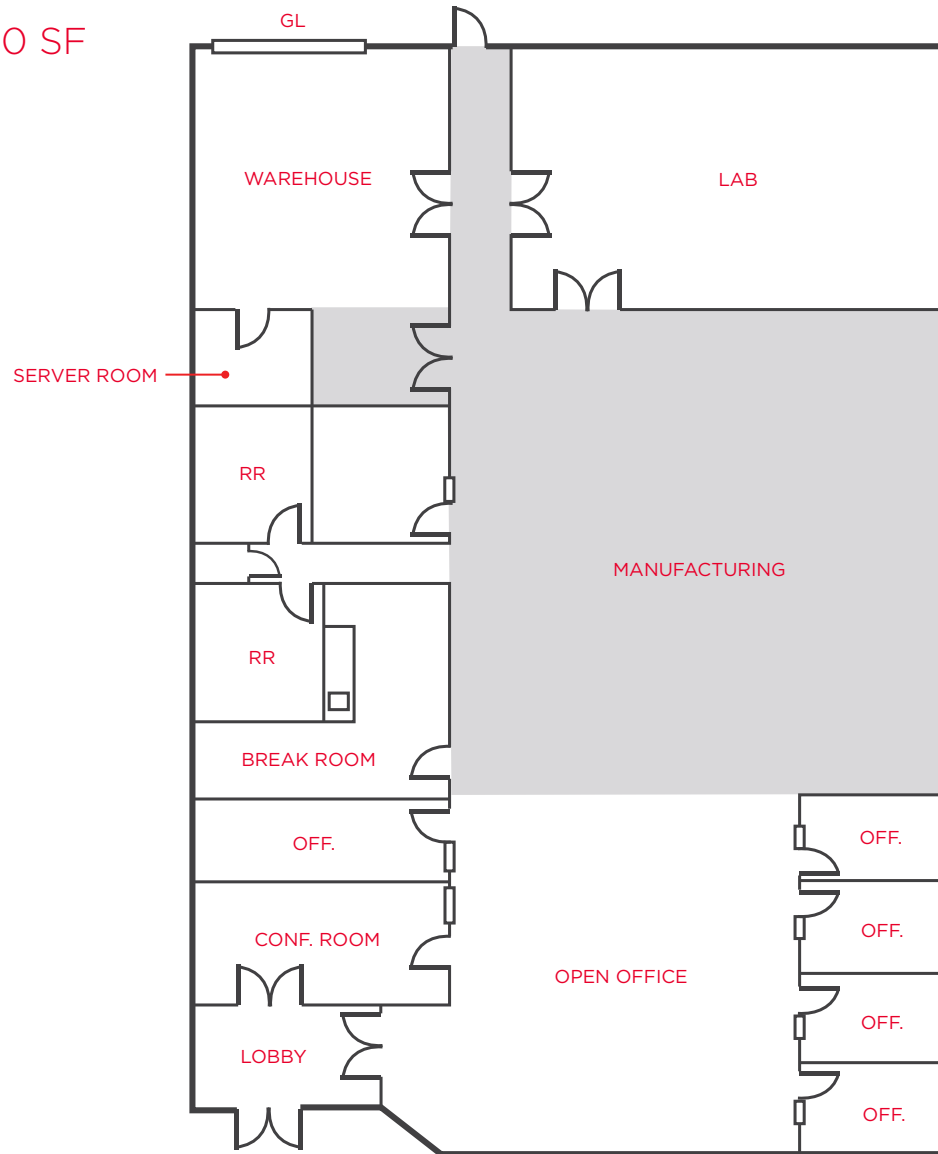
Highlights

- High Image North San Jose location
- 4/1,000 Parking
- Easy Access to Highways 101 & 880
- Walk to Light Rail Station
- Lab, Warehouse, Open Office, Privates and Conference Space.
- Shower in Space



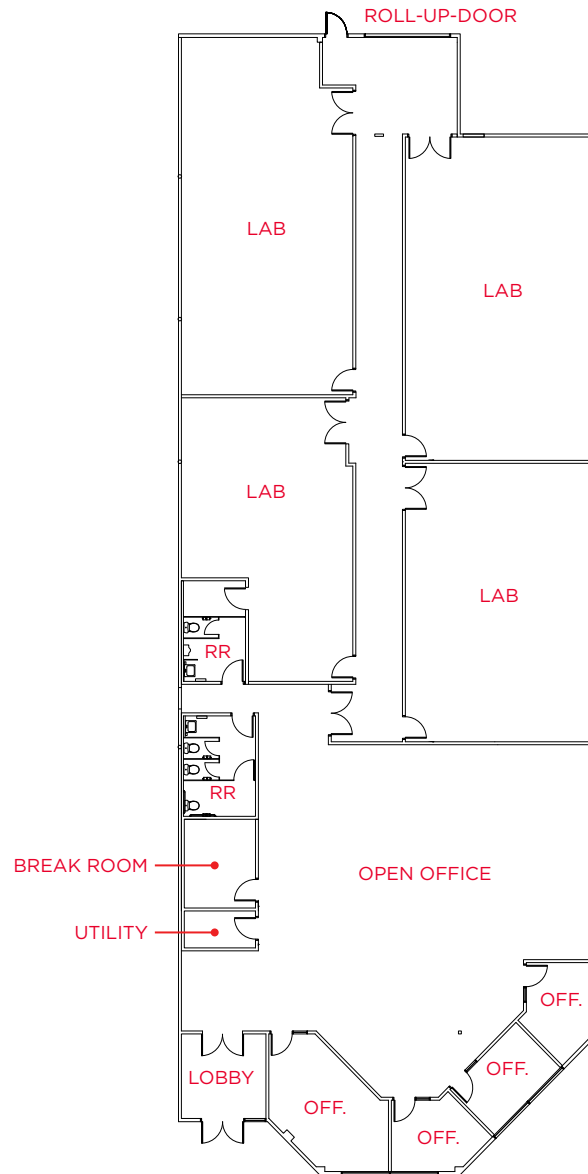
2367 BERING DRIVE | San Jose, California

Floor Plan | ±7,200 SF



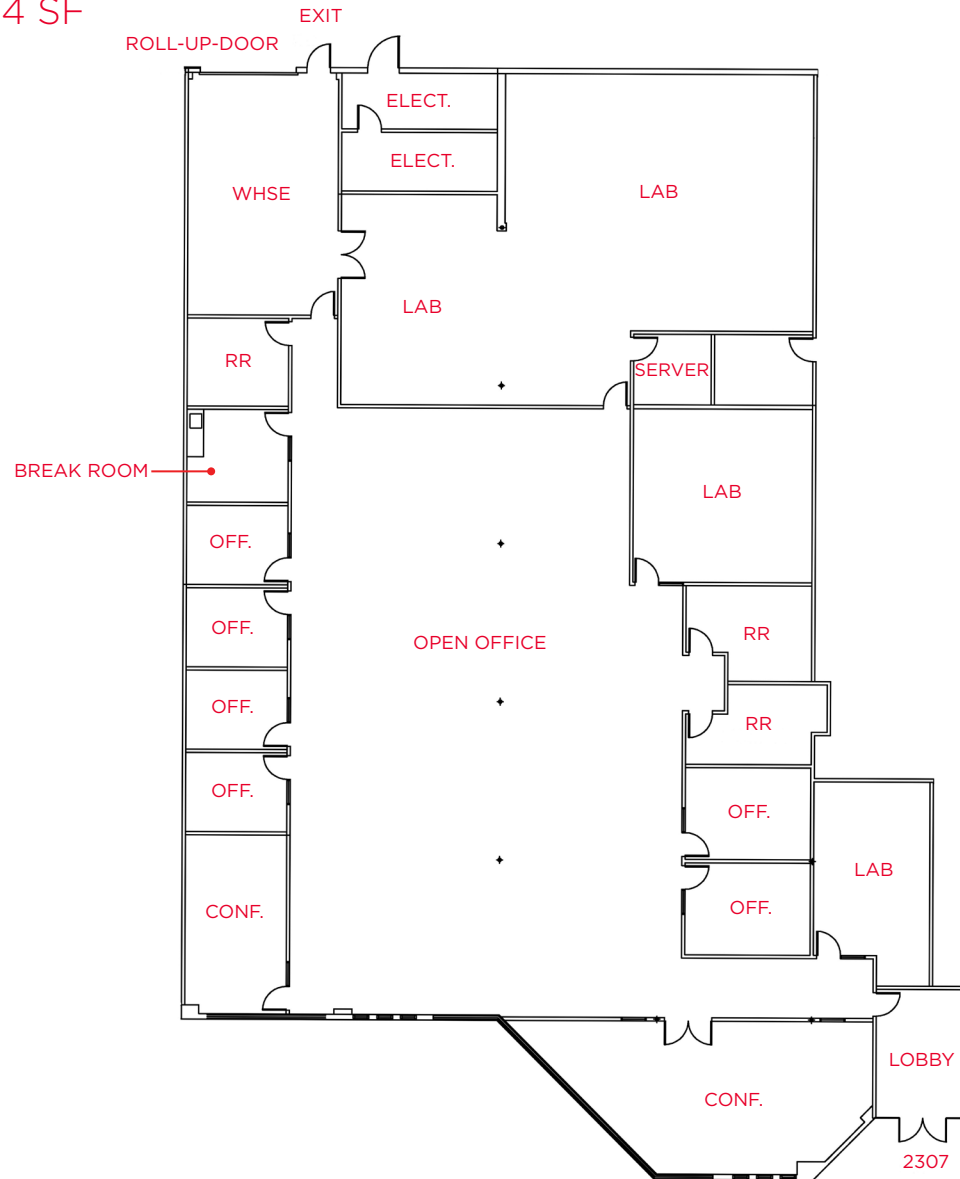
- **Power:**
400 Amps @ 480 Volts
- **HVAC**
100%
- **Description**
Reception, Perimeter Privates, Break Room, Large Conference Room, Lab, Server Room and Grade Level Loading

Floor Plan | ±8,989 SF



- **Power:**
400 Amps @ 480 Volts
- **HVAC**
48.5 Tons
- **Description**
Reception, Perimeter Privates,
and Large Lab Areas

Floor Plan | ±11,214 SF



- **Power:**
200 Amps @ 277/480 Volts
400 Amps @ 120/208 Volts
- **HVAC**
27 Tons
- **Description**
Private Offices, 2 Conference Rooms, 4 Lab Areas, Break Room, Reception, and Open Office

BERING / ZANKER BUSINESS PARK

San Jose, California

Public Transit and Amenities

