



## St. Mary's Episcopal Church

3900 ROLAND AVE  
BALTIMORE, MD | 21211

**14,000 +/- GSF | 1.07 AC**

## Offering Memorandum

### For Sale:

- Located in Hampden, just blocks from Hopkins
- Multiple classroom and office spaces
- Adequate parking, 45 spaces
- 100-year vintage architecture
- Built in 1918 with additions in the 1970s and 1998
- Updated plumbing and HVAC systems
- Zoned R6

### **LIZZY SWEENEY**

Senior Director  
+1 410 347 1149  
lizzy.sweeney@cushwake.com

### **MICHAEL DENISE, MSREI**

Senior Advisor  
+1 410 347 7548  
michael.denise@cushwake.com

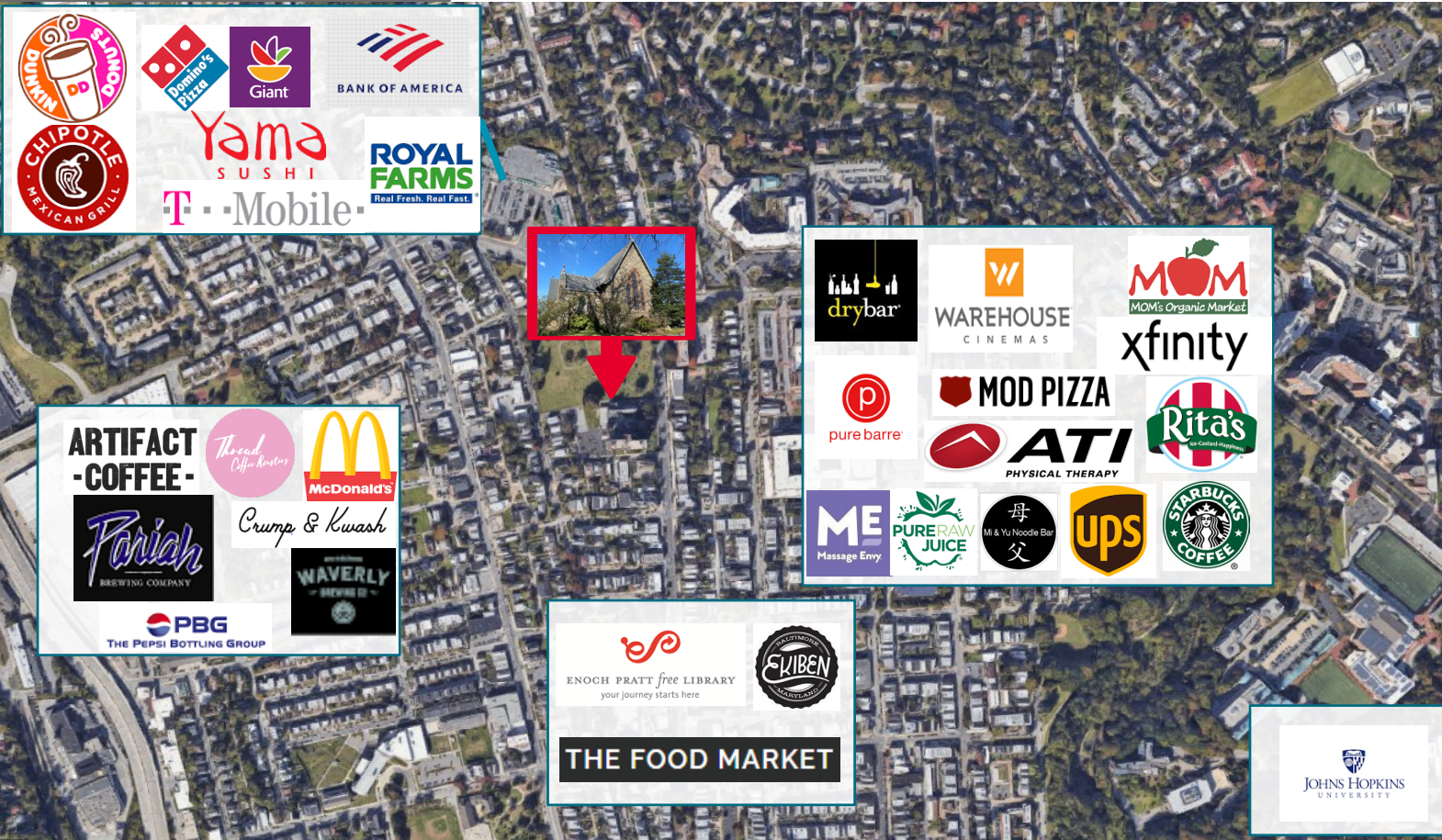
One East Pratt St, Suite 700  
Baltimore, MD 21202  
Main +1 410 752 4285  
Fax +1 410 576 9031  
cushmanwakefield.com

# St. Mary's Episcopal Church

3900 ROLAND AVE | BALTIMORE, MD | 21211

14,000 +/- GSF | 1.07 AC

## LOCATION MAP



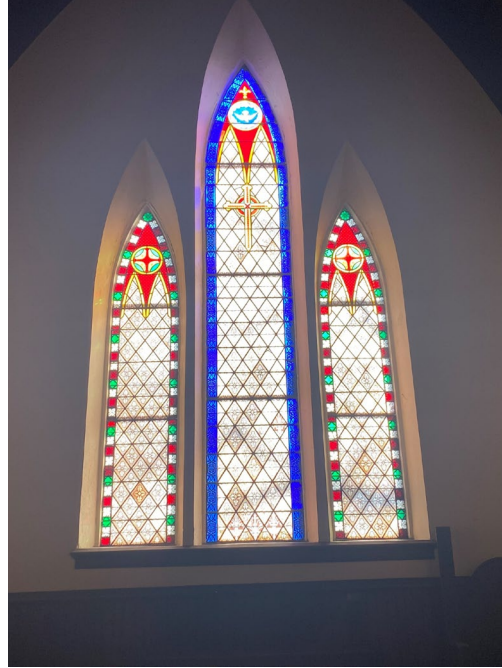
## PROPERTY INTRODUCTION

Cushman & Wakefield is pleased to present for sale 3900 Roland Avenue, a 14,000+/- SF centrally located investment/development opportunity in the heart of Hampton, Baltimore. Situated in a robust neighborhood with a variety of eateries and amenities. This location boasts strong demographics. Originally constructed at the turn of the century, the facility has been updated with a two-story addition and plenty of parking, while retaining the classic historic nature of the neighborhood. (Principal's only)

# St. Mary's Episcopal Church

3900 ROLAND AVE | BALTIMORE, MD | 21211

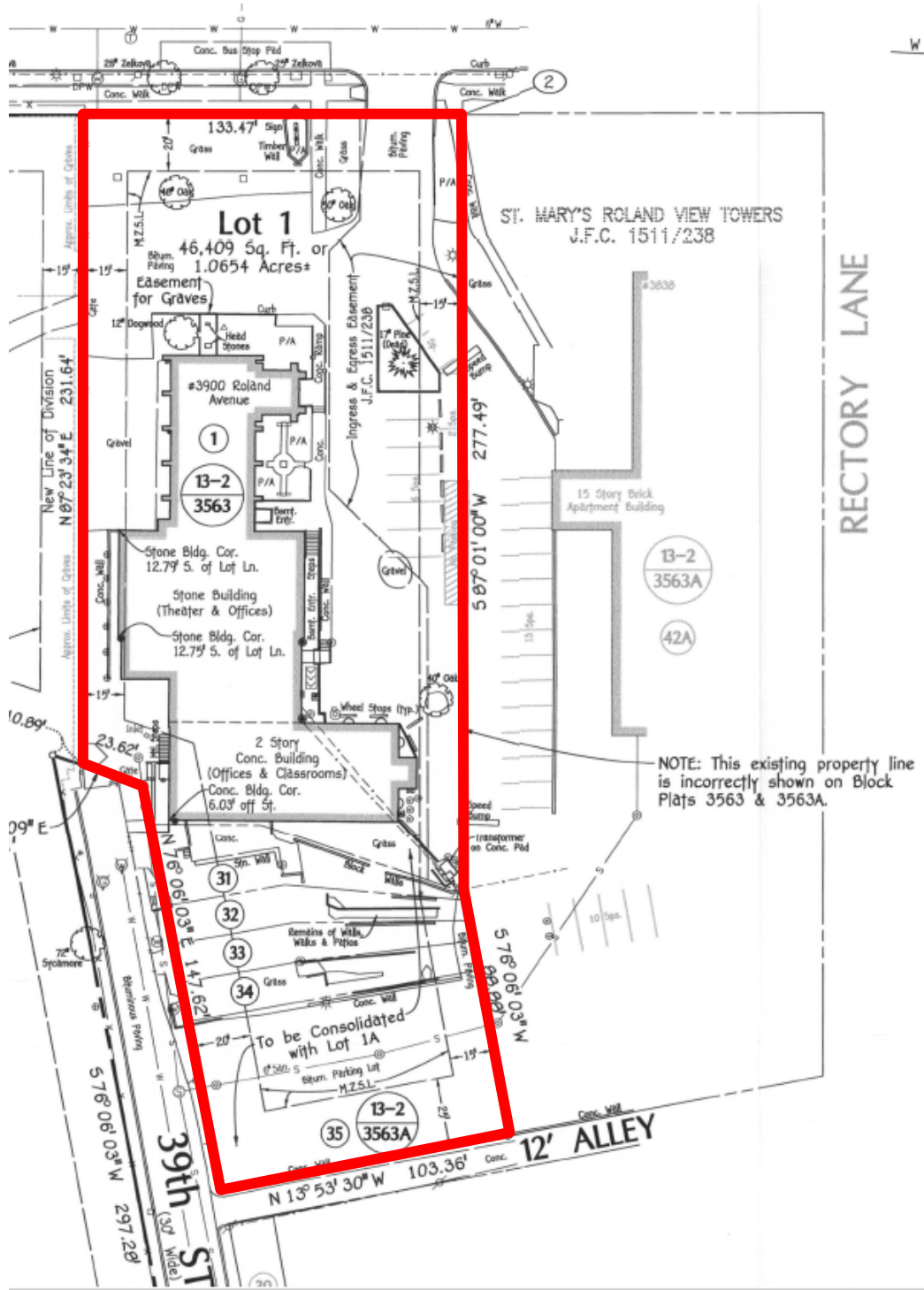
14,000+/- GSF | 1.07 AC



# St. Mary's Episcopal Church

3900 ROLAND AVE | BALTIMORE, MD | 21211

14,000+/- GSF | 1.07 AC



# St. Mary's Episcopal Church

3900 ROLAND AVE | BALTIMORE, MD | 21211

14,000 +/- GSF | 1.07 AC



**LIZZY SWEENEY**

Senior Director

+1 410 347 7549

Lizzy.sweeney@cushwake.com

**MICHAEL DENISE, MSREI**

Senior Advisor

+1 410 347 7548

michael.denise@cushwake.com

One East Pratt St, Suite 700

Baltimore, MD 21202

+1 410 752 4285 Main

+1 410 576 9031 Fax

cushmanwakefield.com