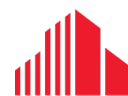




DOWNTOWN RETAIL/OFFICE SPACES | **FOR LEASE**

# 300 DUNDAS STREET

*London, ON N6B 1T6*



**CUSHMAN &  
WAKEFIELD**

Southwestern Ontario

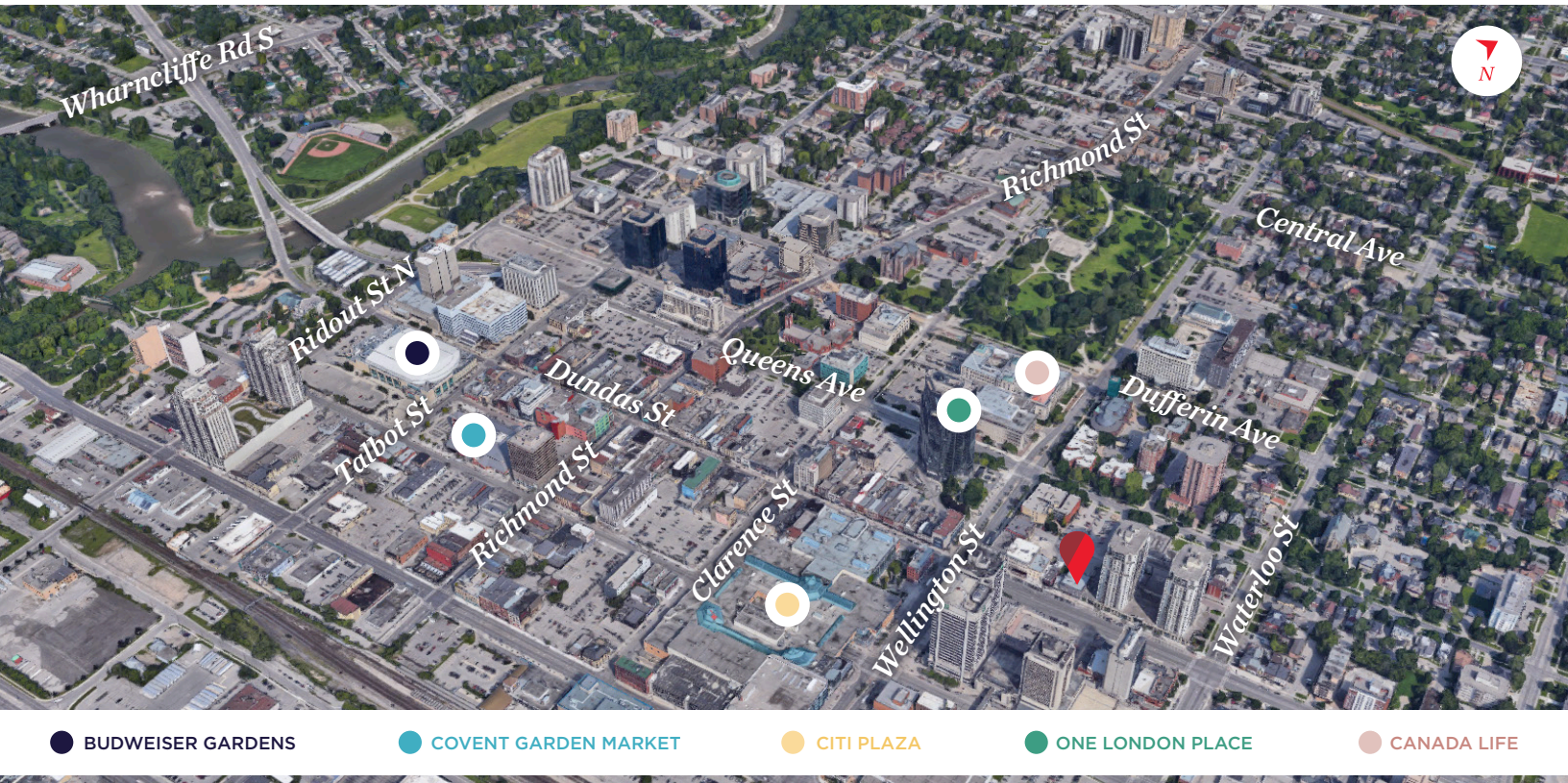
# ABOUT THE PROPERTY

Prime downtown locations with very competitive lease rates:

UNIT	AVAILABLE SPACE	ASKING RENT	ADDITIONAL RENT	ADDITIONAL COMMENTS
101	3,531 SF	\$10.00 PSF Net	\$12.00 PSF*	<ul style="list-style-type: none"> <li>Ground floor retail/office space</li> <li>Raw space ready for your custom build-out</li> </ul>
200	4,450 SF	\$10.00 PSF Net	\$12.00 PSF*	<ul style="list-style-type: none"> <li>Second floor office space</li> </ul>
301	720 SF	\$10.00 PSF Net	\$12.00 PSF*	<ul style="list-style-type: none"> <li>Third floor office space</li> </ul>

\*Inclusive of building insurance, common area maintenance and property taxes

- **Zoning: DA2** - permits a wide range of uses
- **Parking:** Available at the rear of the building
- Great visual exposure for your business
- Excellent access to parking and public transit services, including the new downtown transportation loop and nearby VIA Rail station
- Situated just east of Wellington Street on Dundas Street, a short walk away from many downtown amenities including entertainment, restaurants, retail shops/ services and hotels



● BUDWEISER GARDENS    
 ● COVENT GARDEN MARKET    
 ● CITI PLAZA    
 ● ONE LONDON PLACE    
 ● CANADA LIFE

**MICHAEL JOHNSON**  
 Sales Representative  
 519 438 7325  
 michael.johnson@cushwakeswo.com

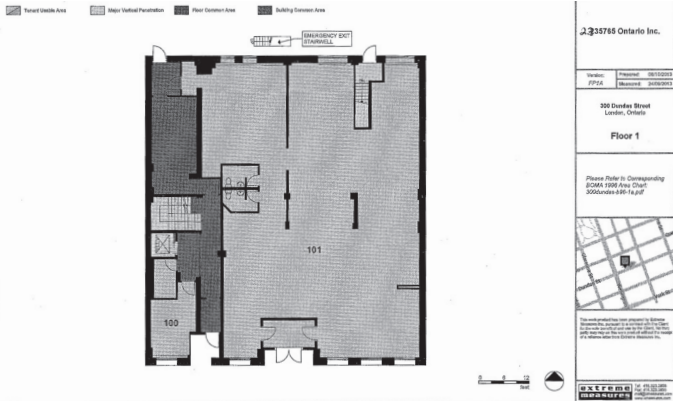
**CUSHMAN & WAKEFIELD**  
 SOUTHWESTERN ONTARIO  
 850 Medway Park Dr, Suite 201  
 London, Ontario N6G 5C6  
 www.cushwakeswo.com


**CUSHMAN & WAKEFIELD**  
 Southwestern Ontario

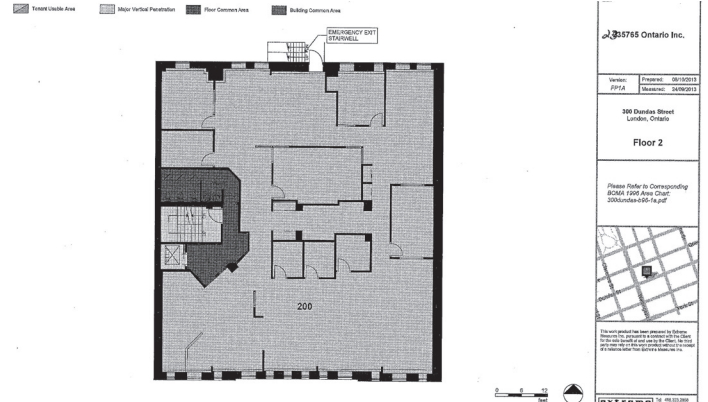
©2024 Cushman & Wakefield Southwestern Ontario, Real Estate Brokerage, Independently Owned and Operated. A Member of the Cushman & Wakefield Alliance. This information has been obtained from sources believed to be reliable but has not been verified. No warranty or representation, express or implied, is made as to the condition of the property (or properties) referenced herein or as to the accuracy or completeness of the information contained herein, and same is submitted subject to errors, omissions, change of price, rental or other conditions, withdrawal without notice, and to any special listing conditions imposed by the property owner(s). Any projections, opinions or estimates are subject to uncertainty and do not signify current or future property performance. All rights reserved.

# FLOOR PLANS

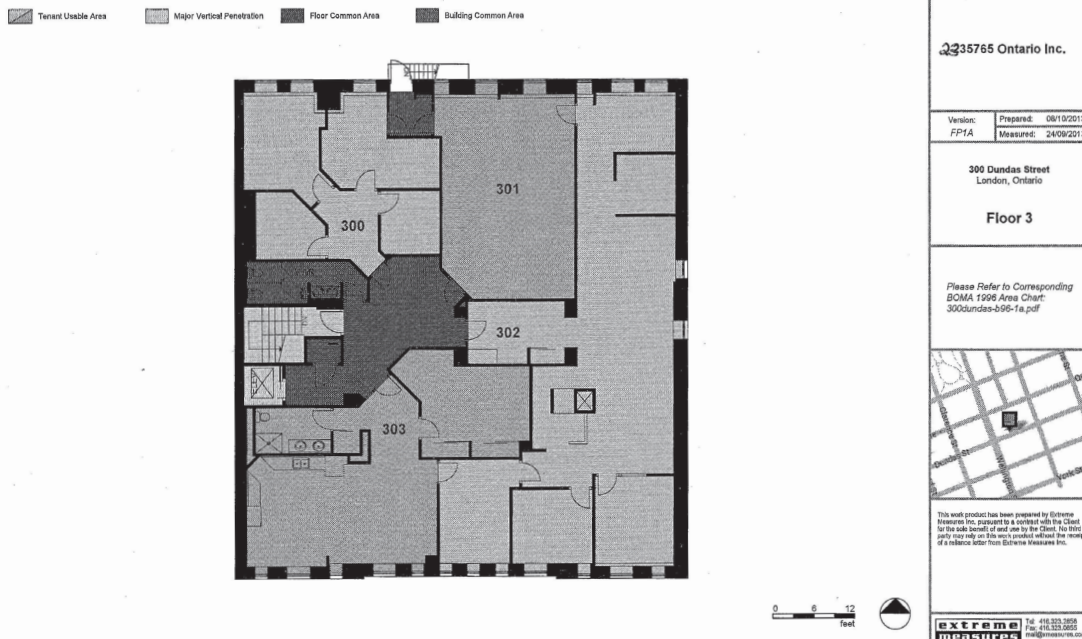
## FIRST FLOOR



## SECOND FLOOR



## THIRD FLOOR



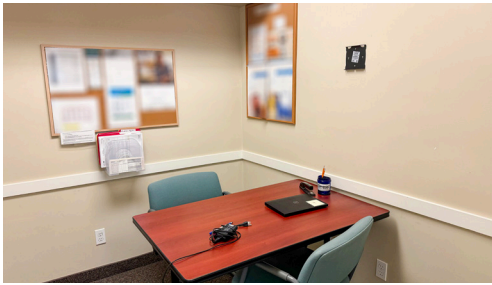
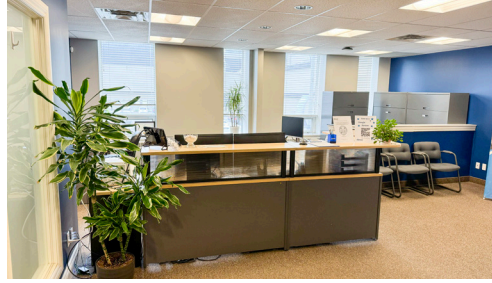
**MICHAEL JOHNSON**  
 Sales Representative  
 519 438 7325  
 michael.johnson@cushwakeswo.com

**CUSHMAN & WAKEFIELD**  
 SOUTHWESTERN ONTARIO  
 850 Medway Park Dr, Suite 201  
 London, Ontario N6G 5C6  
 www.cushwakeswo.com


**CUSHMAN & WAKEFIELD**  
 Southwestern Ontario

# PROPERTY IMAGES

## UNIT 200



## UNIT 301



**MICHAEL JOHNSON**  
Sales Representative  
519 438 7325  
michael.johnson@cushwakeswo.com

**CUSHMAN & WAKEFIELD**  
SOUTHWESTERN ONTARIO  
850 Medway Park Dr, Suite 201  
London, Ontario N6G 5C6  
[www.cushwakeswo.com](http://www.cushwakeswo.com)

**CUSHMAN & WAKEFIELD**  
Southwestern Ontario

©2024 Cushman & Wakefield Southwestern Ontario, Real Estate Brokerage, Independently Owned and Operated. A Member of the Cushman & Wakefield Alliance. This information has been obtained from sources believed to be reliable but has not been verified. No warranty or representation, express or implied, is made as to the condition of the property (or properties) referenced herein or as to the accuracy or completeness of the information contained herein, and same is submitted subject to errors, omissions, change of price, rental or other conditions, withdrawal without notice, and to any special listing conditions imposed by the property owner(s). Any projections, opinions or estimates are subject to uncertainty and do not signify current or future property performance. All rights reserved.