



AVAILABLE FOR SALE

5505 Adams Farm Lane

SUITES A & B | +/- 2,910 RSF

GREENSBORO, NC 27407



 **CUSHMAN &
WAKEFIELD**

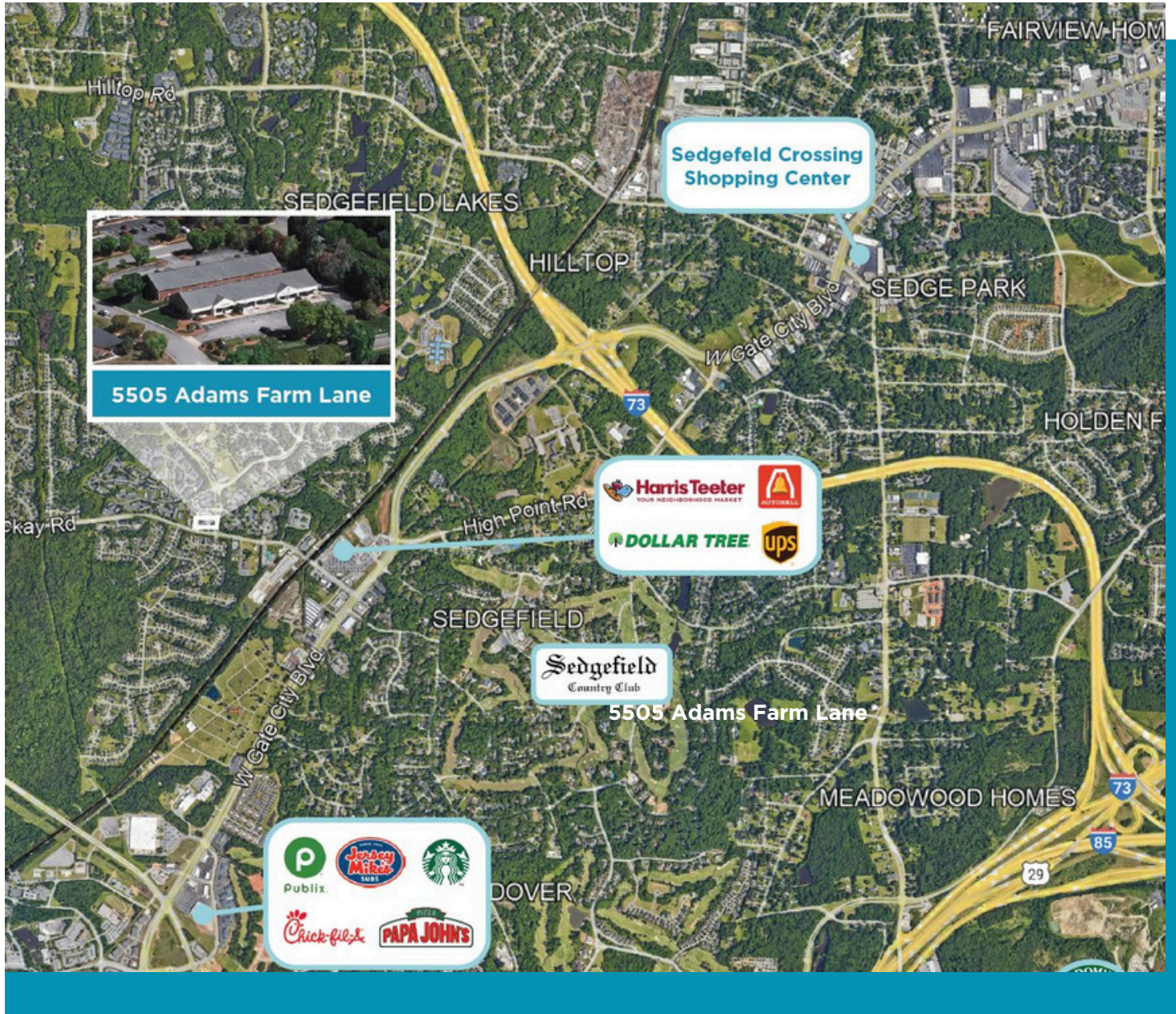
Property Highlights

Available FOR SALE

- +/-2,910 RSF located in the fast-growing Adams Farm market
- Recently renovated with updated, modern finishes throughout
- Single story accessibility with an efficient floorplan for patient/visitor flow
- Ample parking available for visitors and staff
- Excellent signage opportunities
- Located within minutes of several new retail and residential developments with convenient access to major thoroughfares
- Call for pricing



Location



FOR SALE

5505 Adams Farm Lane

SUITES A & B | +/- 2,910 RSF



For more information please contact:

RYAN GIOFFRE

Senior Director

+1 336 601 3488

ryan.gioffre@cushwake.com

OFFICE LOCATION

628 Green Valley Road, Suite 202
Greensboro, NC 27408 | USA

