



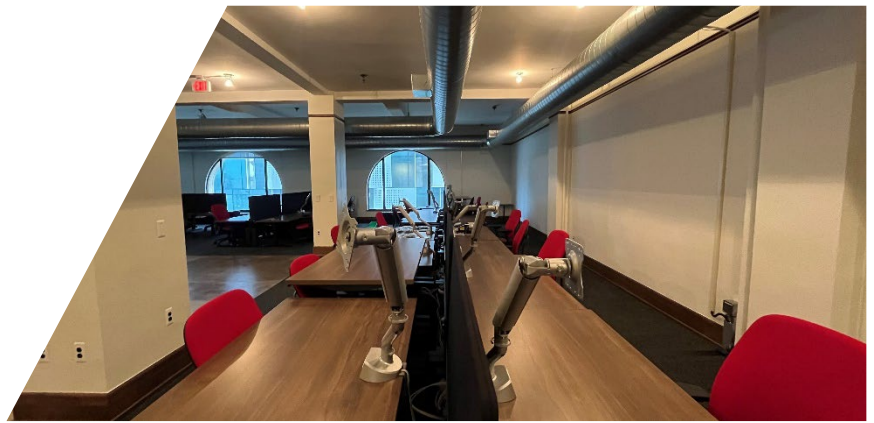
CUSHMAN & WAKEFIELD

FOR SUBLEASE

7,364 SF FOR SUBLEASE

# 2111 Woodward Avenue

Detroit, MI 48201





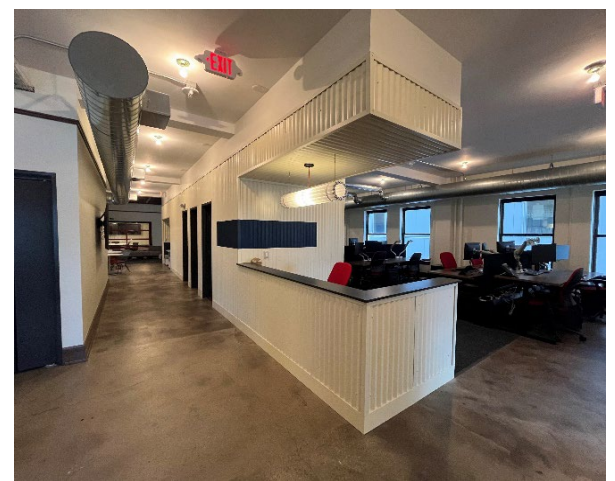
FOR  
SUBLEASE

# 2111 Woodward Ave

7,364 SF | Suite 300

## Property Highlights

- Available immediately: 7,364 SF
- Lease expiration: 9/30/2025
- Suite 300 consisting of the entire 3<sup>rd</sup> floor
- On-site building security
- Brand new space located in one of Detroit's most iconic buildings
- Furniture, fixtures, and equipment negotiable
- Across the street from Comerica Park and walking distance to fine dining, entertainment, shopping, and more



### John VanNoord

Senior Associate  
+1 248 358 6106  
john.vannoord@cushwake.com

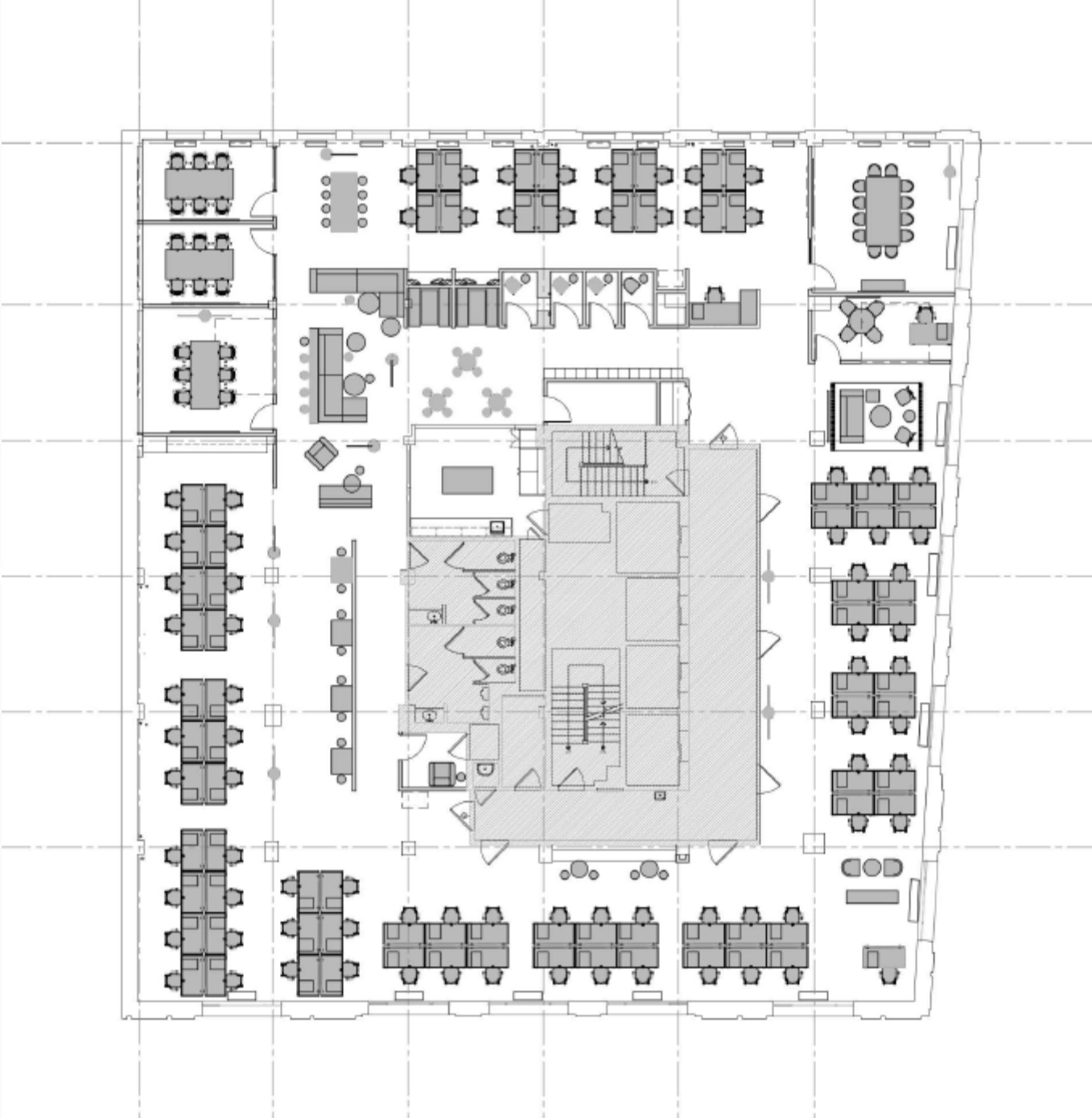
### Garrett Keais

Executive Managing Director  
+1 248 358 6112  
garrett.keais@cushwake.com

27777 Franklin Rd, Suite 1050  
Southfield, MI 48034  
+1 248 358 6100  
cushmanwakefield.com

# Suite 300

7,364 SF





# Location

