



FOR LEASE
1252 E Hastings Street
Vancouver, BC

4,800 SF OF
FLEX INDUSTRIAL / RETAIL SPACE



WELCOME TO 1252 E HASTINGS STREET



This industrial/retail lease opportunity at 1252 E Hastings Street is ideal for businesses seeking high visibility and a flexible layout. With a prominent street-facing frontage, the space is well-suited for showrooms, retail storefronts, or service-based businesses looking to attract and engage a steady flow of local customers and passing traffic.



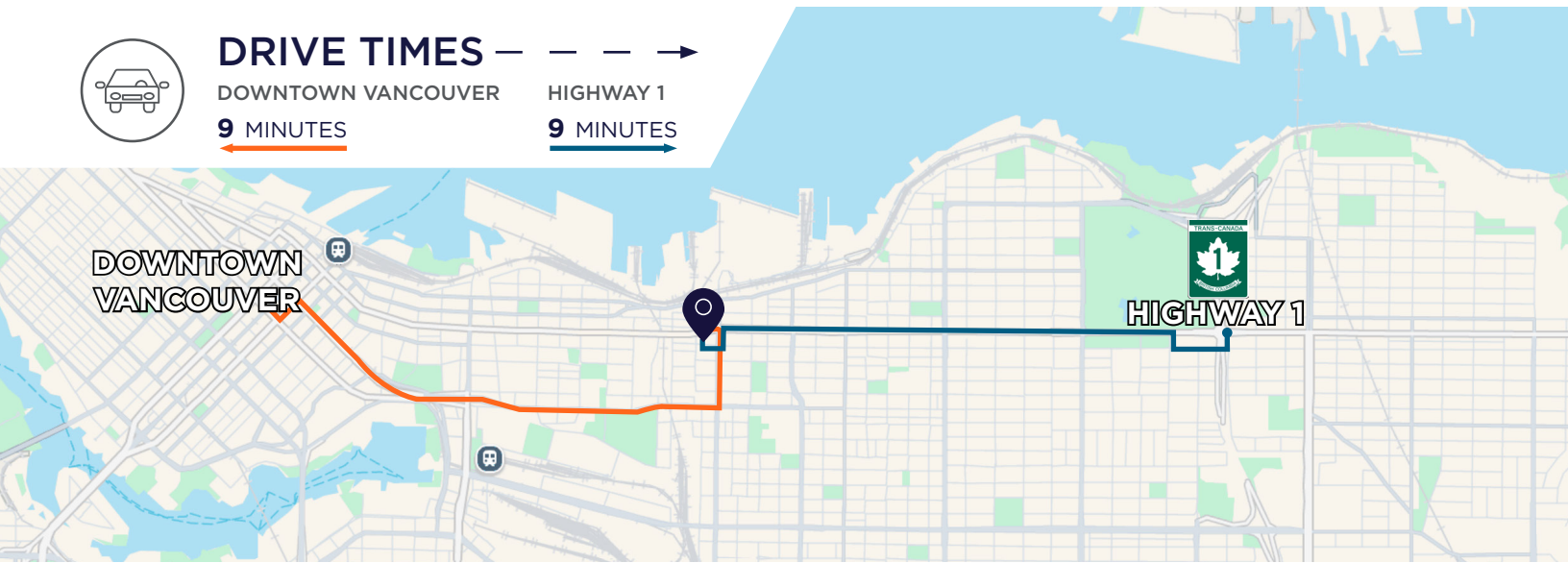
DRIVE TIMES

DOWNTOWN VANCOUVER

9 MINUTES

HIGHWAY 1

9 MINUTES



Details

SIZE	4,800 SF
NET RENT	Contact listing agents
ADDITIONAL RENT	\$10.54 PSF
AVAILABILITY	January 1 st , 2025

Highlights

- Warehouse/showroom space
- Located along major arterial route
- Many coffee shops, breweries, restaurants within immediate vicinity
- Rear grade loading door

Zoning

M-1. The intent of this Schedule is to permit industrial and other uses that are beneficial in providing industrial employment opportunities or serve a useful or necessary function in the city.

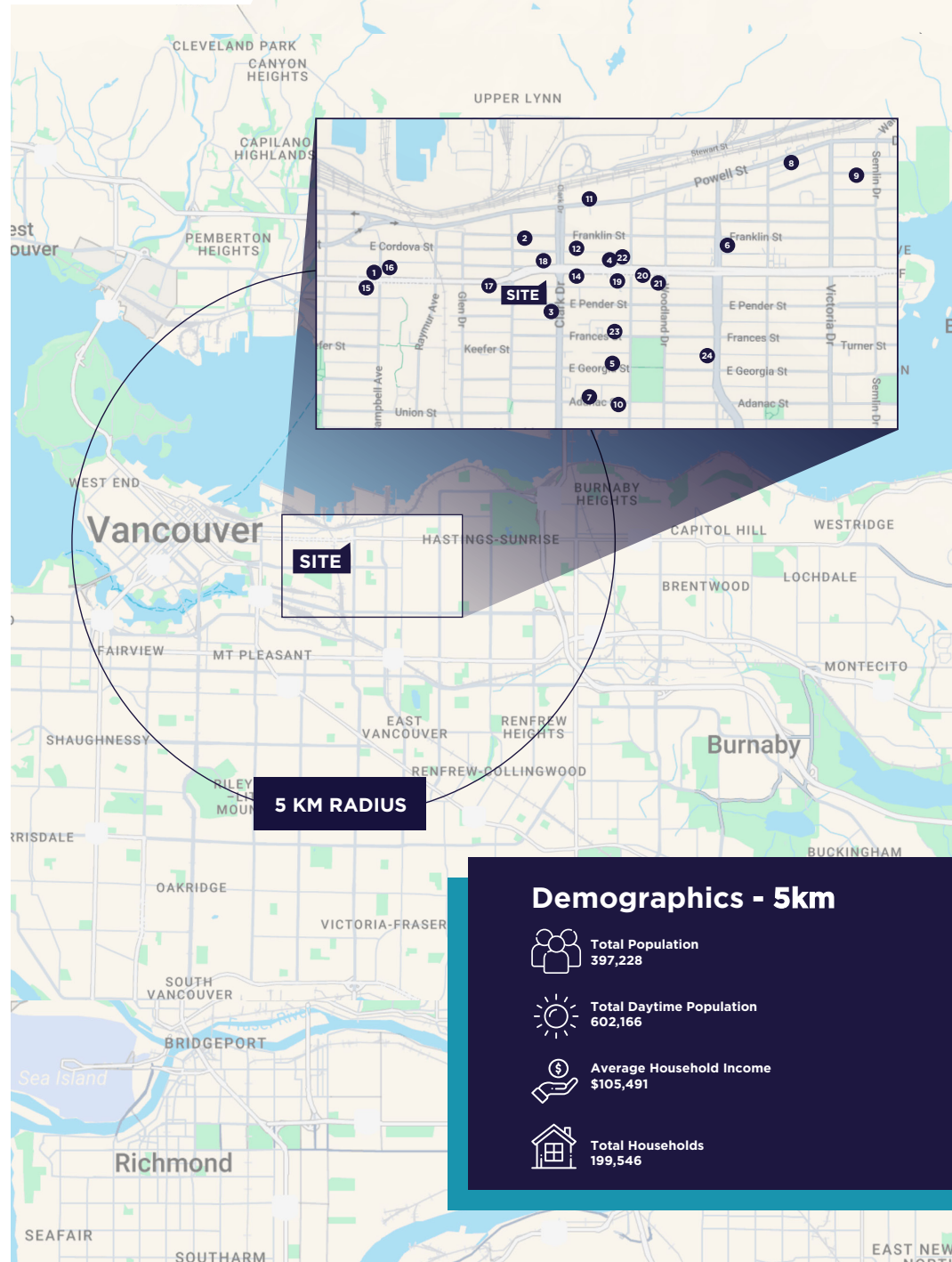
NEIGHBOURHOOD OVERVIEW

Situated on the vibrant East Hastings corridor in Vancouver, this property benefits from a high-traffic, easily accessible location in one of the city's most dynamic areas. Surrounded by an active community and close to essential amenities, the space is perfectly positioned to enhance brand visibility and customer reach.

Neighbourhood Amenities

1. Strathcona Beer Company
2. Container Brewing Ltd.
3. Superflux Beer Company
4. Howe Sound Taphouse & Kitchen
5. Balderdash Brewing Company
6. Storm Brewing LTD.
7. Off The Rail Brewing
8. Slow Hand Beer Company
9. Parallel 49 Brewing Company
10. Bomber Brewing
11. Powell Brewing
12. CowDog Brew Company
13. East Van Brewing Company
14. The Gourmet Warehouse
15. The Garden Strathcona
16. Liquid + Solids
17. Pink Pearl
18. Axum Restaurant
19. No Frills
20. Dollarama
21. Yolks
22. Hotel At The Waldorf
23. Earnest Ice Cream
24. Pepino's Spaghetti House

AMENITIES MAP

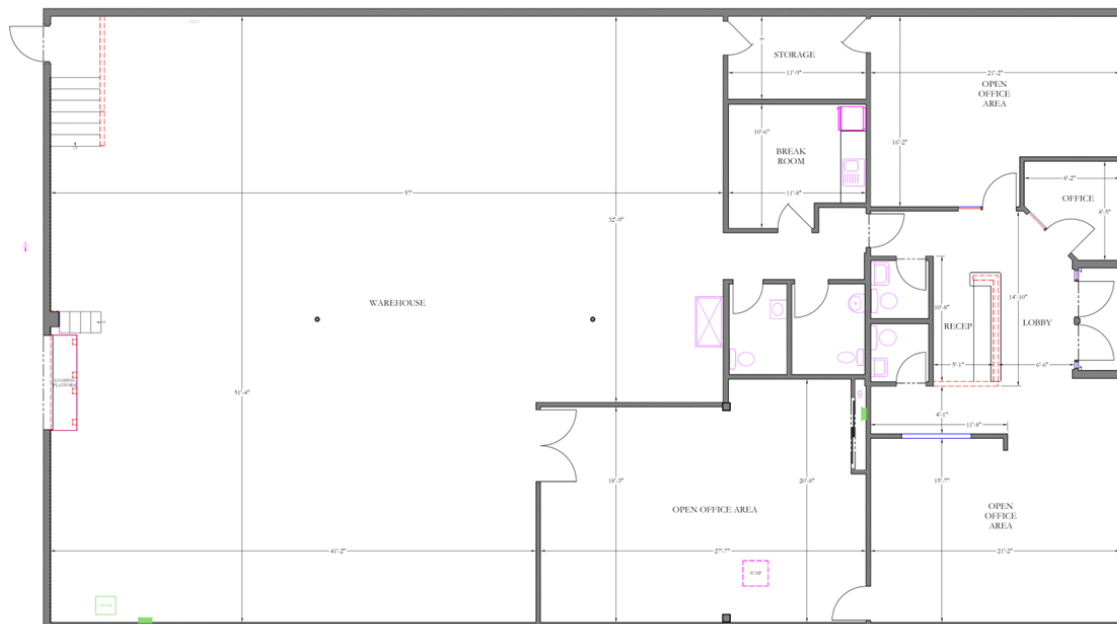


5 KM RADIUS

Demographics - 5km

- Total Population 397,228
- Total Daytime Population 602,166
- Average Household Income \$105,491
- Total Households 199,546

FLOORPLAN



BAHAREH TABAR
Associate Vice President
+1 604 640 5869
bahareh.tabar@cushwake.com

GRAHAM WILLIAMS
Associate
+1 604 608 5938
graham.williams@cushwake.com

Suite 1200 - 700 West Georgia Street / PO Box 10023, Pacific Centre / Vancouver, BC V7Y 1A1 / +1 604 683 3111 / cushmanwakefield.ca

©2024 Cushman & Wakefield ULC. All rights reserved. The information contained in this communication is strictly confidential. This information has been obtained from sources believed to be reliable but has not been verified. NO WARRANTY OR REPRESENTATION, EXPRESS OR IMPLIED, IS MADE AS TO THE CONDITION OF THE PROPERTY (OR PROPERTIES) REFERENCED HEREIN OR AS TO THE ACCURACY OR COMPLETENESS OF THE INFORMATION CONTAINED HEREIN, AND SAME IS SUBMITTED SUBJECT TO ERRORS, OMISSIONS, CHANGE OF PRICE, RENTAL OR OTHER CONDITIONS, WITHDRAWAL WITHOUT NOTICE, AND TO ANY SPECIAL LISTING CONDITIONS IMPOSED BY THE PROPERTY OWNER(S). ANY PROJECTIONS, OPINIONS OR ESTIMATES ARE SUBJECT TO UNCERTAINTY AND DO NOT SIGNIFY CURRENT OR FUTURE PROPERTY PERFORMANCE.