



More Renovations Coming Soon!



SUMMIT ON 4TH STREET

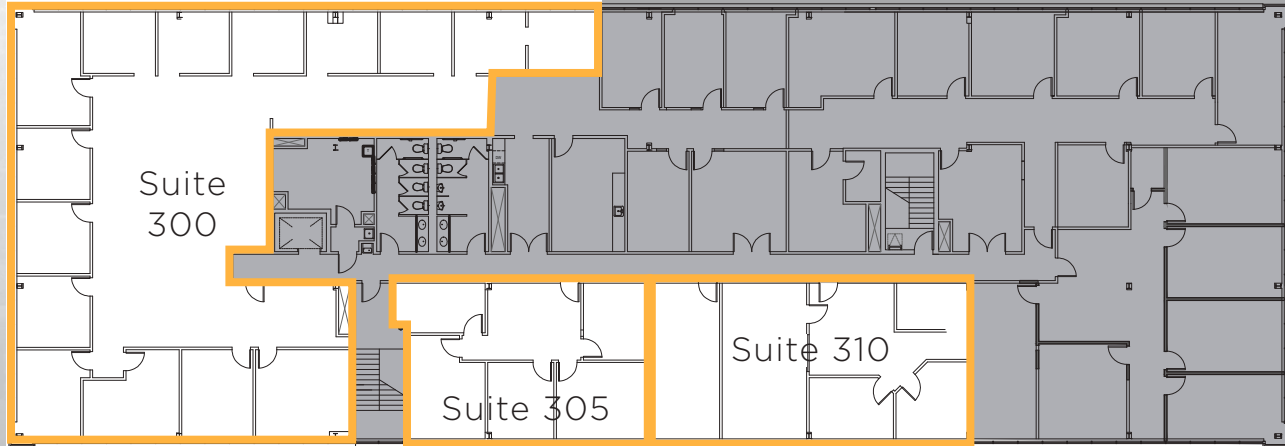
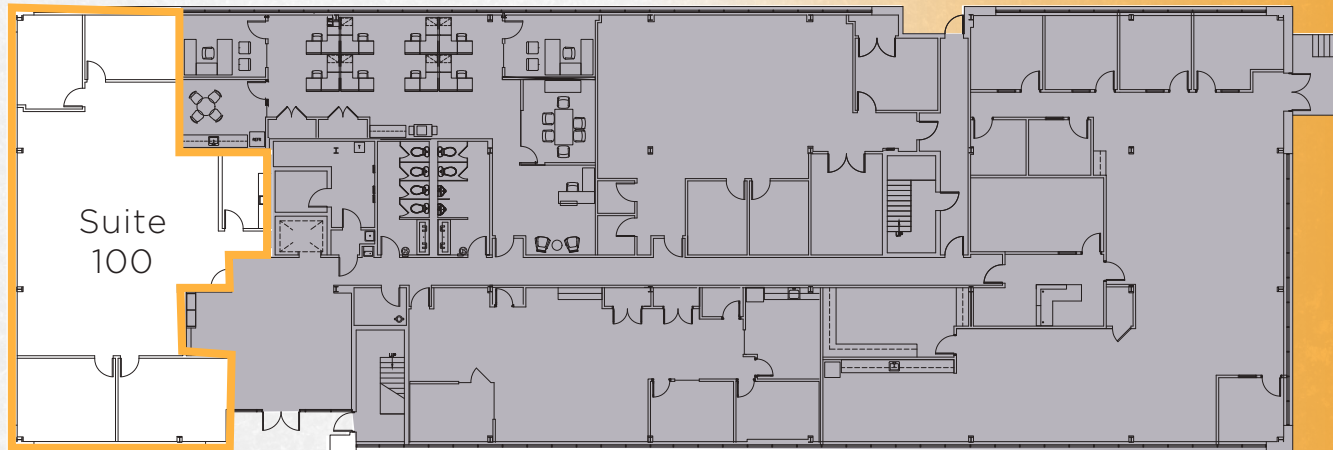
9887 4TH STREET, ST. PETERSBURG, FLORIDA

AVAILABLE SUITES

SUMMIT ON
4TH STREET

SUITE	RSF	AVAILABILITY
305	1,199 RSF	Immediately
310	1,549 RSF	Immediately
305 + 310	2,748 RSF	Immediately
100	2,776 RSF	Immediately
300	4,830 RSF	Immediately

- Rental Rate: \$24.50/SF FS
- Parking Ratio: 5/1,000 Surface
- 4th Street Pylon Signage



LOBBY RENOVATIONS

PROPERTY HIGHLIGHTS:

- Exterior Landscaping & Additional Interior Renovations Coming Soon
- Central Gateway & Pinellas Location with Immediate Access to I-275 & Gandy Blvd/Overpass
- Multiple Small Blocks of Space Available
- 24/7 Tenant Access



9887 4TH STREET | ST. PETERSBURG

Amenities

- Restaurants
- Grocery Stores
- Hotels
- Day Care Center
- Healthcare

● RESTAURANTS

No.	Restaurants
1	Firehouse Subs
2	Whiskey Wings
3	Jersey Mike's Subs
4	McDonalds
5	Arby's
6	Boston Market
7	Einstein Bros
8	Godfather's Pizza
9	Subway
10	Taco Bell
11	Village Inn
12	Pizza Hut
13	Wendy's
14	Starbucks
15	Steak n Shake
16	Burger King
17	Dunkin Donuts
18	Yummy Thai
19	YaYa's
20	Cafe Masala
21	Tijuana Flats
22	Glory Days Grill
23	Pepo's Cuban
24	Crab Shack
25	The Getaway
26	Noble Crust
27	Miller's Ale House
28	Mori Sushi
29	McArthur's Irish Pub
30	Culver's

● HOTELS

No.	Hotels
1	Comfort Inn
2	Best Western Gateway Inn

● GROCERY STORE

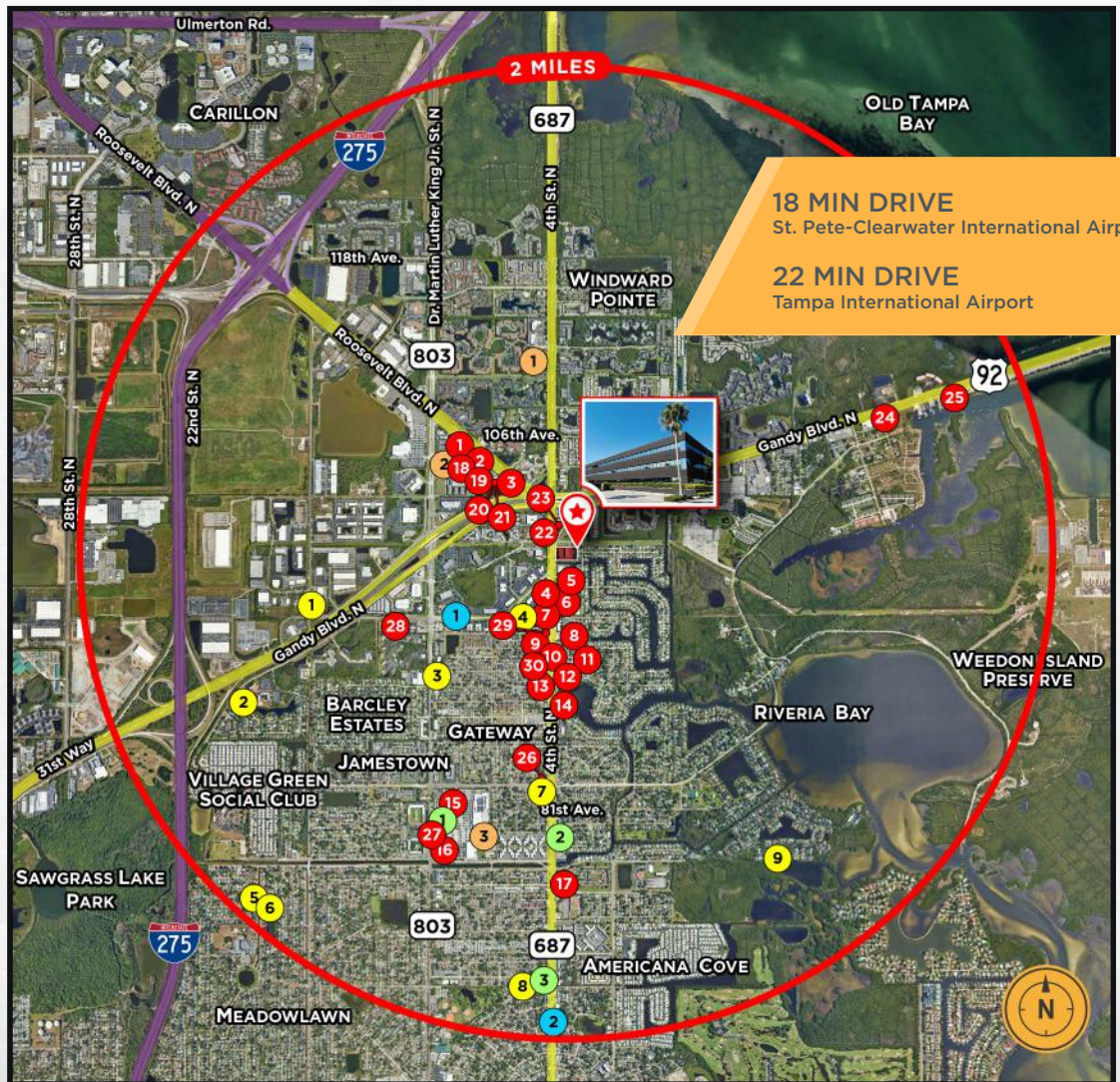
No.	Grocery Store
1	Winn-Dixie
2	Publix
3	Publix

● DAY CARE CENTER

No.	Day Care Center
1	Florida School Child Care
2	Promise Land Pre-School
3	Kids Village Day Care Inc
4	Tot Tender Learning Center
5	Coffee Day Care Center
6	Tiny Treasures Preschool
7	Playschool Day Care
8	Wilson Day Care Center
9	Sunshine Preschool

● HEALTHCARE

No.	Healthcare
1	Minute Clinic at CVS
2	Virtually Urgent Healthcare
3	CareSpot Urgent Care



FOR MORE INFORMATION, PLEASE CONTACT:

MERCEDES ANGELL
 Managing Director
 +1 813 204 5344
mercedes.angell@cushwake.com

MELANIE JACKSON, CCIM, SIOR
 Director
 +1 727 776 2780
melanie.jackson@cushwake.com

MARISSA ANGELL
 Associate
 +1 813 367 6437
marissa.angell@cushwake.com



201 North Franklin Street
 Suite 3300
 Tampa, FL 33602-5163
cushmanwakefield.com