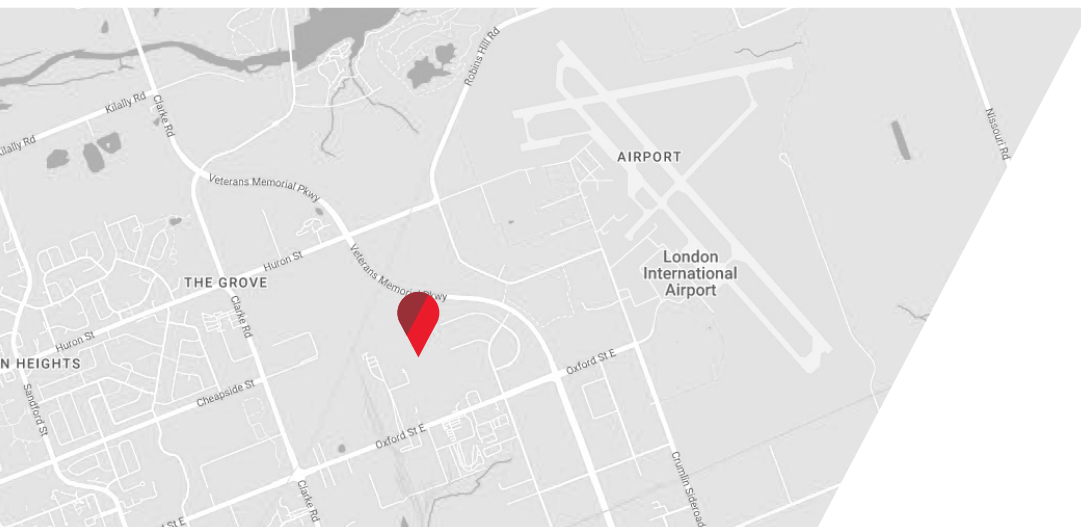




INDUSTRIAL LAND | **FOR SALE**

2000 JETSTREAM ROAD

London, ON N5V 3P6



**CUSHMAN &
WAKEFIELD**

Southwestern Ontario

ASKING PRICE: CONTACT L.A.

PROPERTY HIGHLIGHTS

Industrial land available for sale, offering rare heavy and general industrial zoning. Situated in a major industrial hub in east London near the airport, the property features 531 feet of frontage along Oxford street east and close proximity to Veterans Memorial Parkway, ensuring excellent highway access. Leasing options are also available. An adjacent 19.3-acre parcel is available for sale or lease, offering the potential to combine parcels for a total of 48 acres

SITE AREA

28.8 Acres

ZONING

GI1/GI2/HI1 (see permitted uses on page 3)

PROPERTY TAXES

\$1,035.59 (2024)



2000 Jetstream Road
28.8 Acres



JAMESON LAKE

Sales Representative

519 438 8548

jameson.lake@cushwakeswo.com

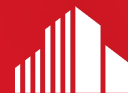
ANDREW JOHNSON

Sales Representative

519 438 8639

andrew.johnson@cushwakeswo.com

CUSHMAN & WAKEFIELD
SOUTHWESTERN ONTARIO
850 Medway Park Dr, Suite 201
London, Ontario N6G 5C6
www.cushwakeswo.com



CUSHMAN & WAKEFIELD

Southwestern Ontario

©2024 Cushman & Wakefield Southwestern Ontario, Real Estate Brokerage, Independently Owned and Operated. A Member of the Cushman & Wakefield Alliance. This information has been obtained from sources believed to be reliable but has not been verified. No warranty or representation, express or implied, is made as to the condition of the property (or properties) referenced herein or as to the accuracy or completeness of the information contained herein, and same is submitted subject to errors, omissions, change of price, rental or other conditions, withdrawal without notice, and to any special listing conditions imposed by the property owner(s). Any projections, opinions or estimates are subject to uncertainty and do not signify current or future property performance. All rights reserved.

PERMITTED USES

GENERAL INDUSTRIAL (GI1) ZONE

Auction establishments	Printing, reproduction and data processing industries	Terminal centres
Automobile body shop	Processed goods industries	Transport terminals
Automobile repair garages	Repair and rental establishments	Truck sales and service establishments
Building or contracting establishments	Research and development establishments	Warehouse establishments
Dry cleaning and laundry plants	Service and repair establishments	Wholesale establishments
Food, tobacco and beverage processing industries	Service trades	Impounding Yard
Manufacturing and assembly industries	Storage depots	Tow Truck Business

GENERAL INDUSTRIAL (GI2) ZONE

Automobile body shops	Sales of vehicles reconditioned in association with 41.2(2)(a) and 41.2(2)(b)	Impounding Yard
Automobile repair garages	Transport terminals	Tow Truck Business
Building or contracting establishments	Truck sales and service establishments	

<https://london.ca/sites/default/files/2022-06/Zoning%20By-law%20Section%2041.pdf>

HEAVY INDUSTRIAL (HI1) ZONE

Armaments, munitions and explosive manufacturing industries	Terminal centres	Specialized recycling facility
Manufacturing and assembly industries	Transport terminals	In-Vessel composting facility; and (Z.-1-031144)
Processed goods industries	Warehouse establishments	Channel composting facility
Raw materials processing industries	Waste treatment facilities	Impounding Yard
Storage depots	Residential and other source recycling facility	Tow Truck Business

<https://london.ca/sites/default/files/2022-06/Zoning%20By-law%20Section%2042.pdf>

JAMESON LAKE

Sales Representative

519 438 8548

jameson.lake@cushwakeswo.com

ANDREW JOHNSON

Sales Representative

519 438 8639

andrew.johnson@cushwakeswo.com

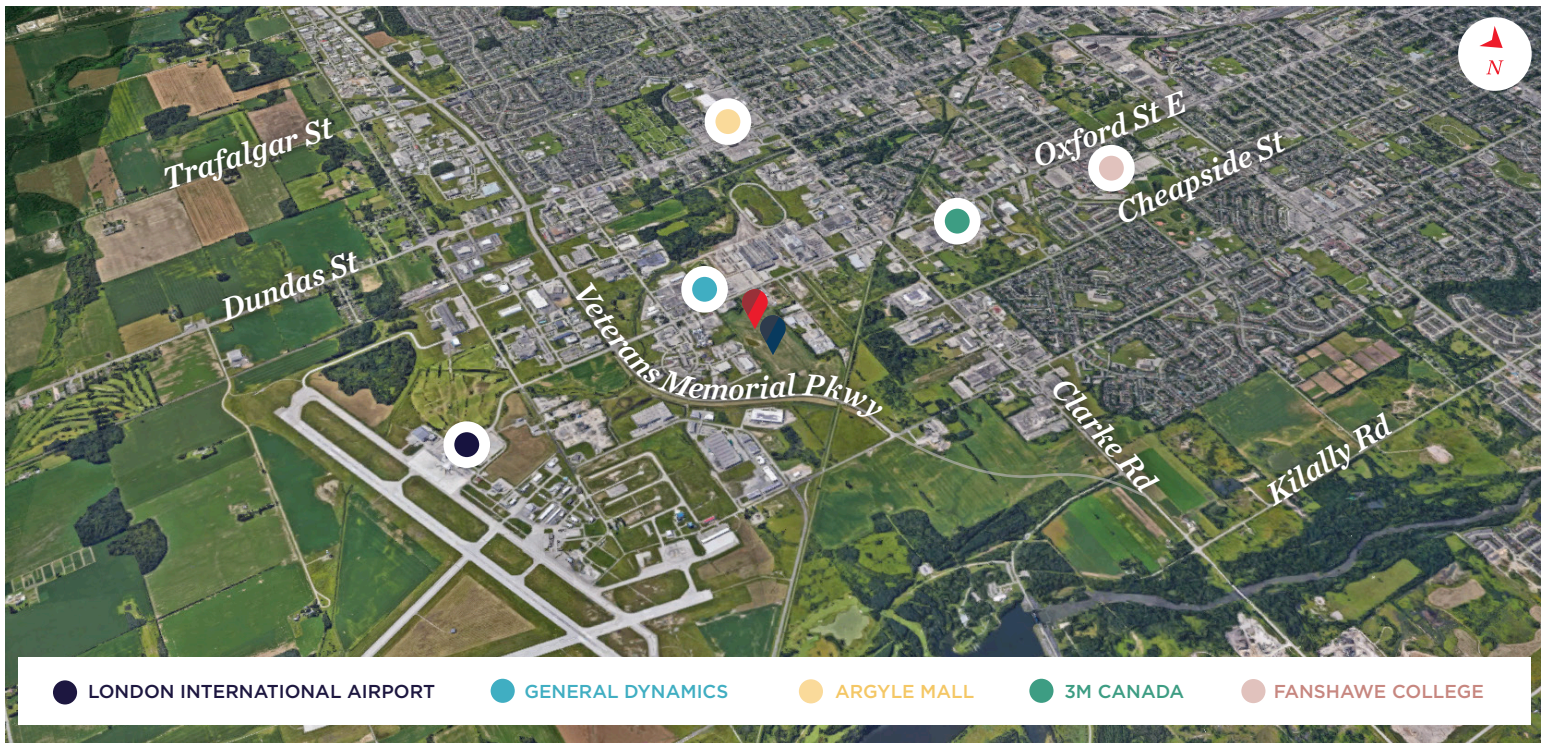
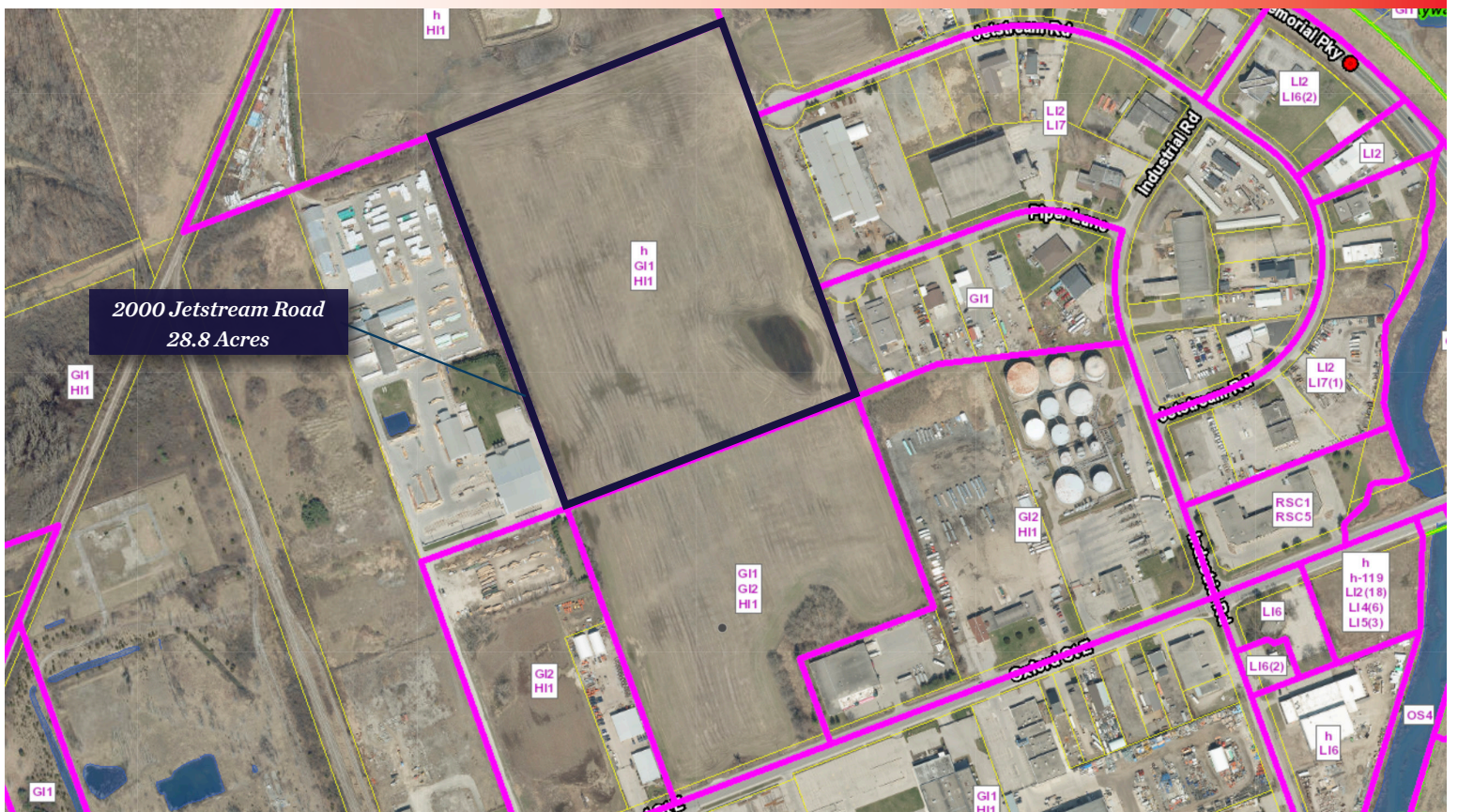
CUSHMAN & WAKEFIELD
SOUTHWESTERN ONTARIO
850 Medway Park Dr, Suite 201
London, Ontario N6G 5C6
www.cushwakeswo.com



CUSHMAN & WAKEFIELD

Southwestern Ontario

PROPERTY MAPS



JAMESON LAKE
Sales Representative
 519 438 8548
 jameson.lake@cushwakeswo.com

ANDREW JOHNSON
Sales Representative
 519 438 8639
 andrew.johnson@cushwakeswo.com

CUSHMAN & WAKEFIELD
 SOUTHWESTERN ONTARIO
 850 Medway Park Dr, Suite 201
 London, Ontario N6G 5C6
 www.cushwakeswo.com

CUSHMAN & WAKEFIELD
 Southwestern Ontario

©2024 Cushman & Wakefield Southwestern Ontario, Real Estate Brokerage, Independently Owned and Operated. A Member of the Cushman & Wakefield Alliance. This information has been obtained from sources believed to be reliable but has not been verified. No warranty or representation, express or implied, is made as to the condition of the property (or properties) referenced herein or as to the accuracy or completeness of the information contained herein, and same is submitted subject to errors, omissions, change of price, rental or other conditions, withdrawal without notice, and to any special listing conditions imposed by the property owner(s). Any projections, opinions or estimates are subject to uncertainty and do not signify current or future property performance. All rights reserved.