

Managed by: 

**CLARION PARTNERS**

**For Lease**



**Crosspoint II**

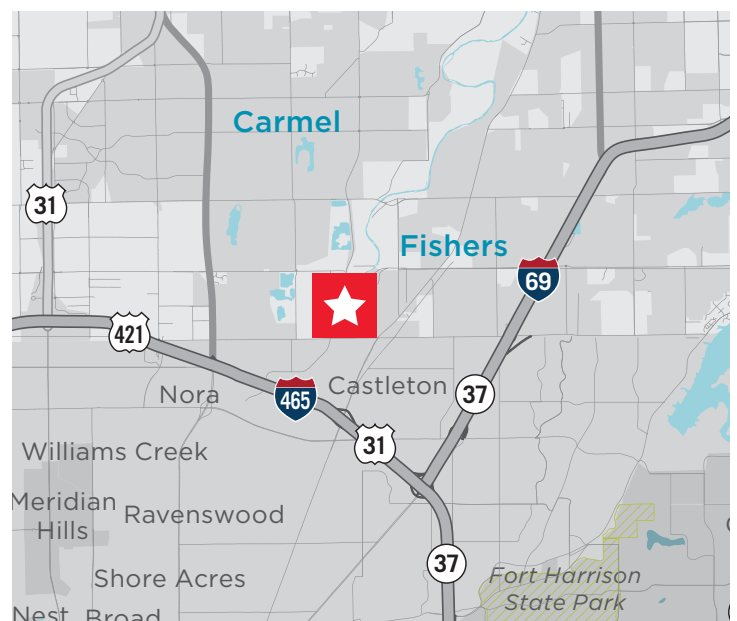
9900 Westpoint Drive, Suite 110  
Indianapolis, IN 46256

5,063 Square Feet Available



## BUILDING HIGHLIGHTS

- 5,063 SF available
- 1,680 SF office
- 20' clear height
- 1 dock
- 1 drive-in
- ESFR sprinkler
- Electrical Power: 400A, 480V, 3 phase
- Convenient access to I-69 and I-465
- Lease Rate: TBD
- 2025 OPEX: \$2.76/SF
- Available: April 1, 2025

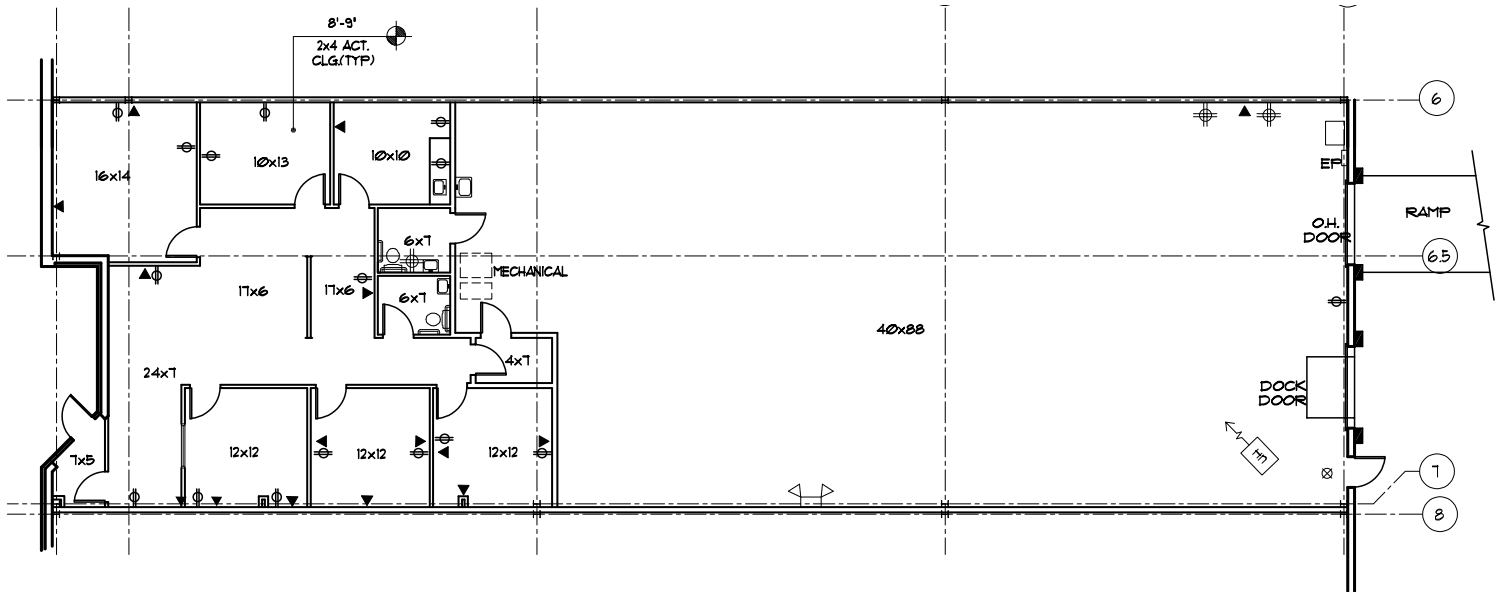


Managed by:

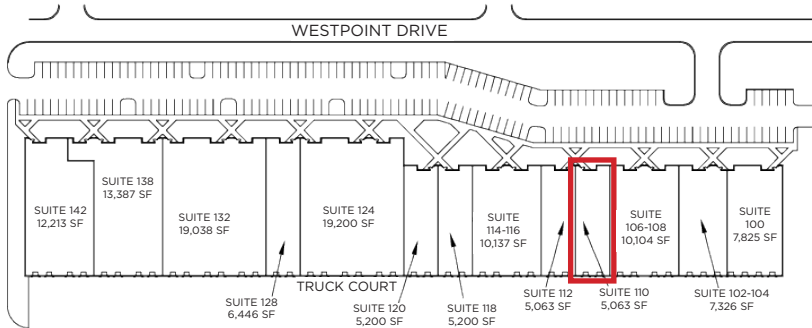


CLARION PARTNERS

Crosspoint II, Suite 110



N FLOOR PLAN  
NO SCALE



A Franklin Templeton Company

[www.clarionpartners.com](http://www.clarionpartners.com)

Crosspoint II is a well-located flex building with a diverse tenant mix in the heart of the fastest growing community in Indiana.

For more information on this opportunity, please contact.



Fritz A. Kauffman, SIOR  
+1 317 639 0486  
[fritz.kauffman@cushwake.com](mailto:fritz.kauffman@cushwake.com)

Bryan W. Poynter, SIOR, CCIM  
+1 317 639 0482  
[bryan.poynter@cushwake.com](mailto:bryan.poynter@cushwake.com)