

FOR SUBLEASE

RIVERPARK VI

10897 South River Front Parkway
South Jordan, UT 84095



Property Highlights

- LED 3/31/2026
- 11,063 SF
- Class A - Fully Furnished Plug and Play
- Private outdoor balcony
- \$24.00 / SF

Contact

JESSE MANGUM
Managing Director
Cushman & Wakefield
D +1 801 303 5547
O +1 801 322 2000
jesse.mangum@cushwake.com

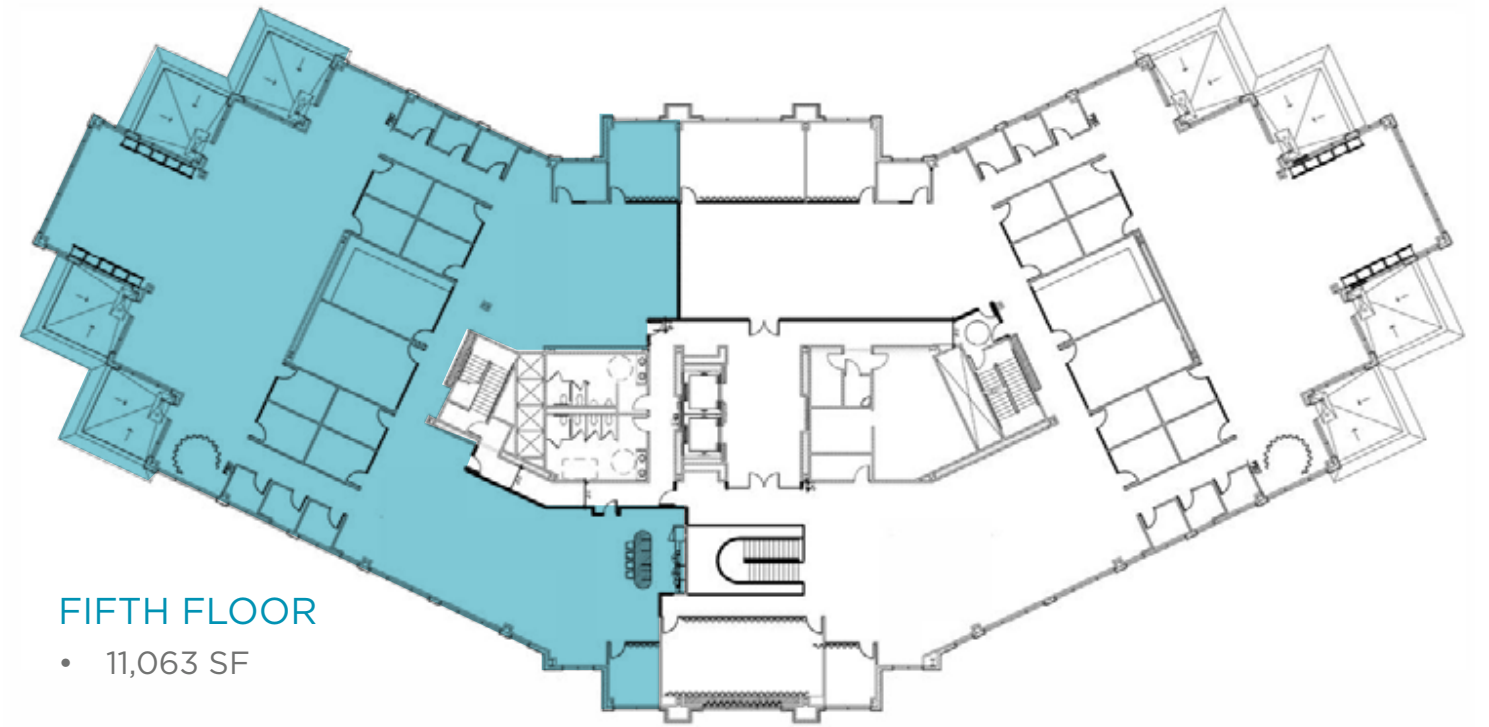
170 South Main Street, Suite 1600
Salt Lake City, UT 84101
+1 801 322 2000
cushmanwakefield.com

FOR SUBLEASE
RIVERPARK VI

10897 South River Front Parkway
South Jordan, UT 84095

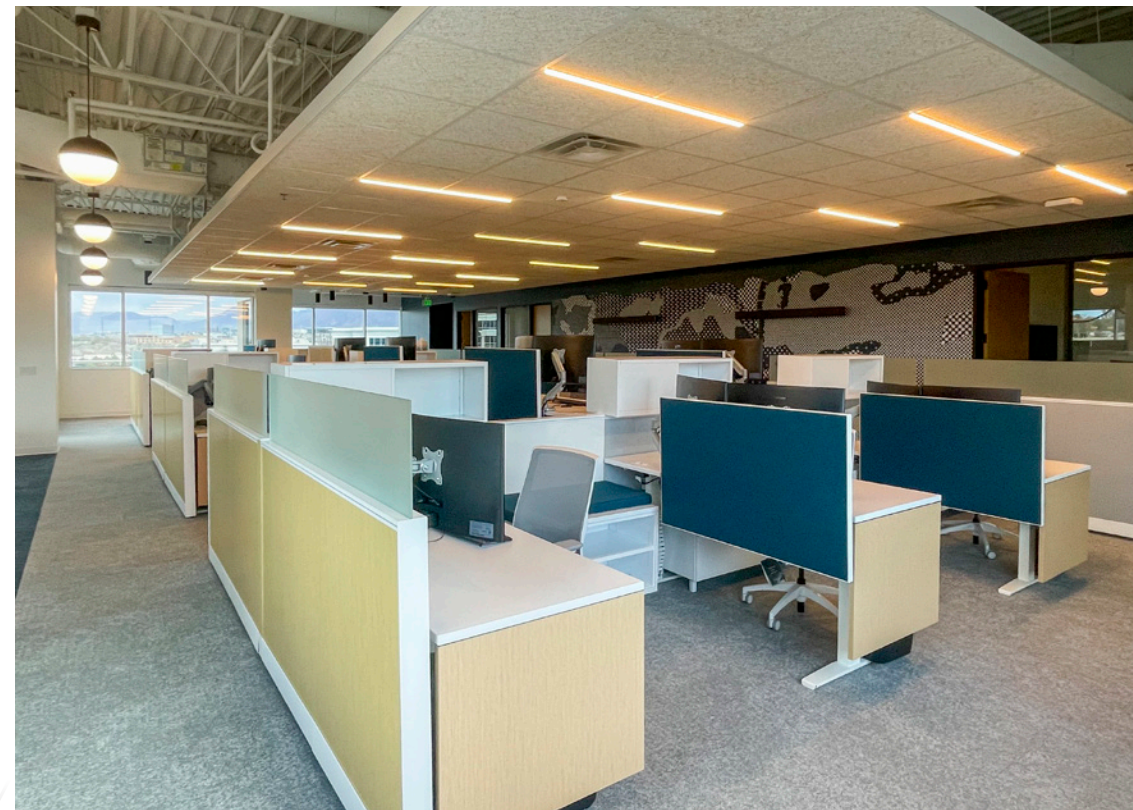
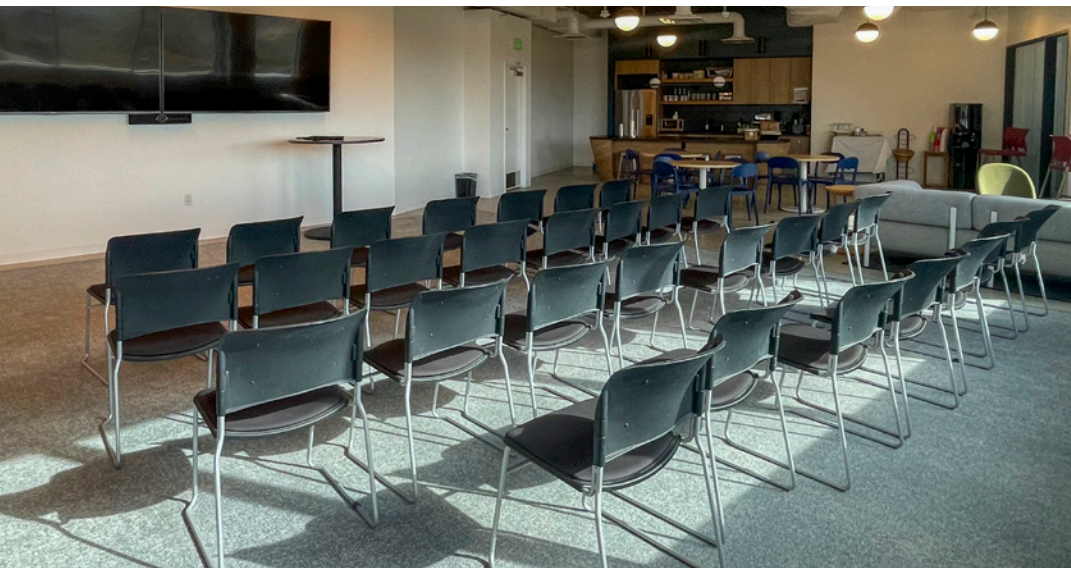


FLOOR PLAN



FIFTH FLOOR

• 11,063 SF



FOR SUBLEASE
RIVERPARK VI

10897 South River Front Parkway
South Jordan, UT 84095



JESSE MANGUM
Managing Director
+1 801 303 5547
jesse.mangum@cushwake.com

170 South Main Street
Salt Lake City, UT 84101
+1 801 322 2000
cushmanwakefield.com