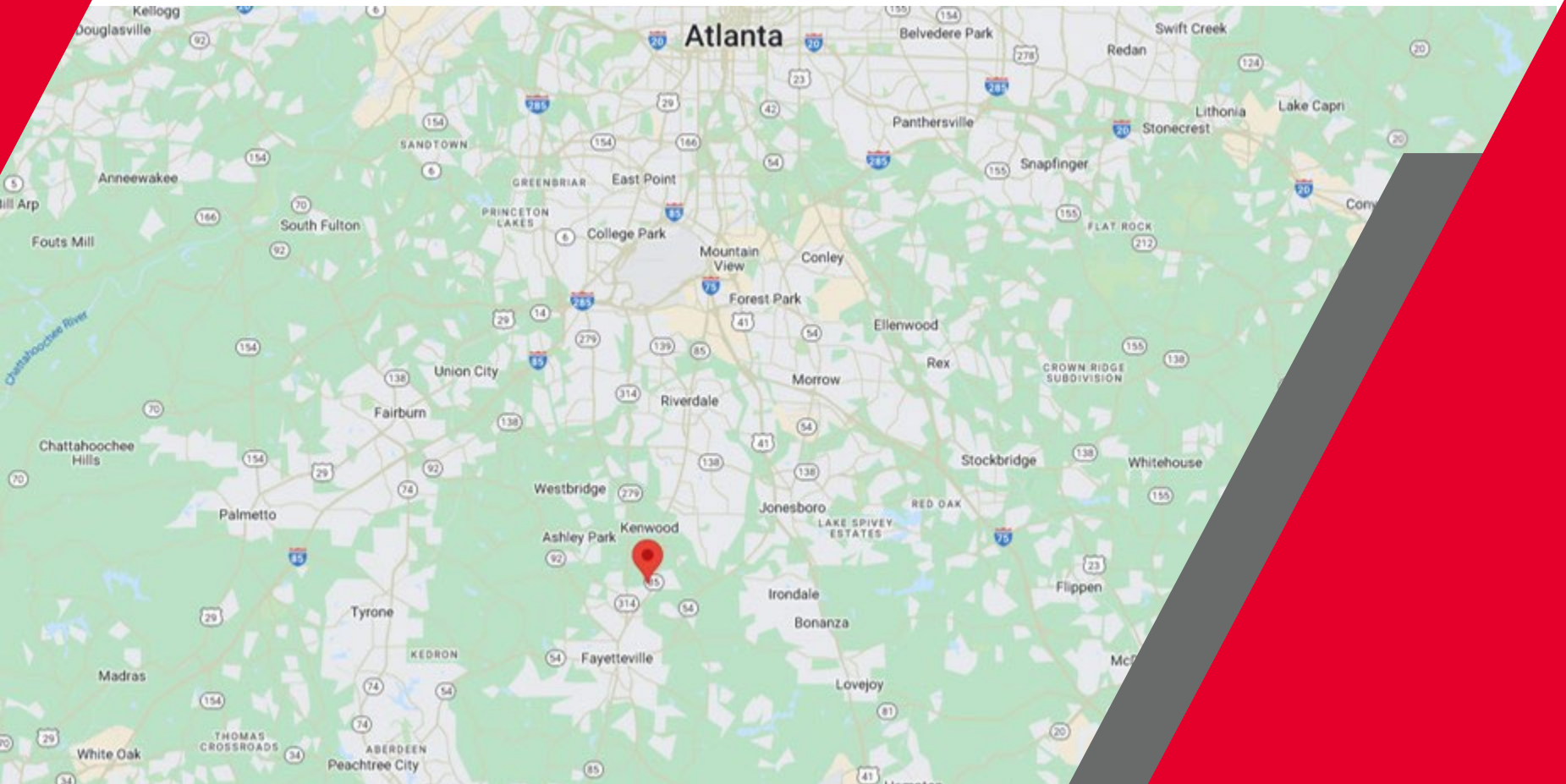


37.4 ACRES

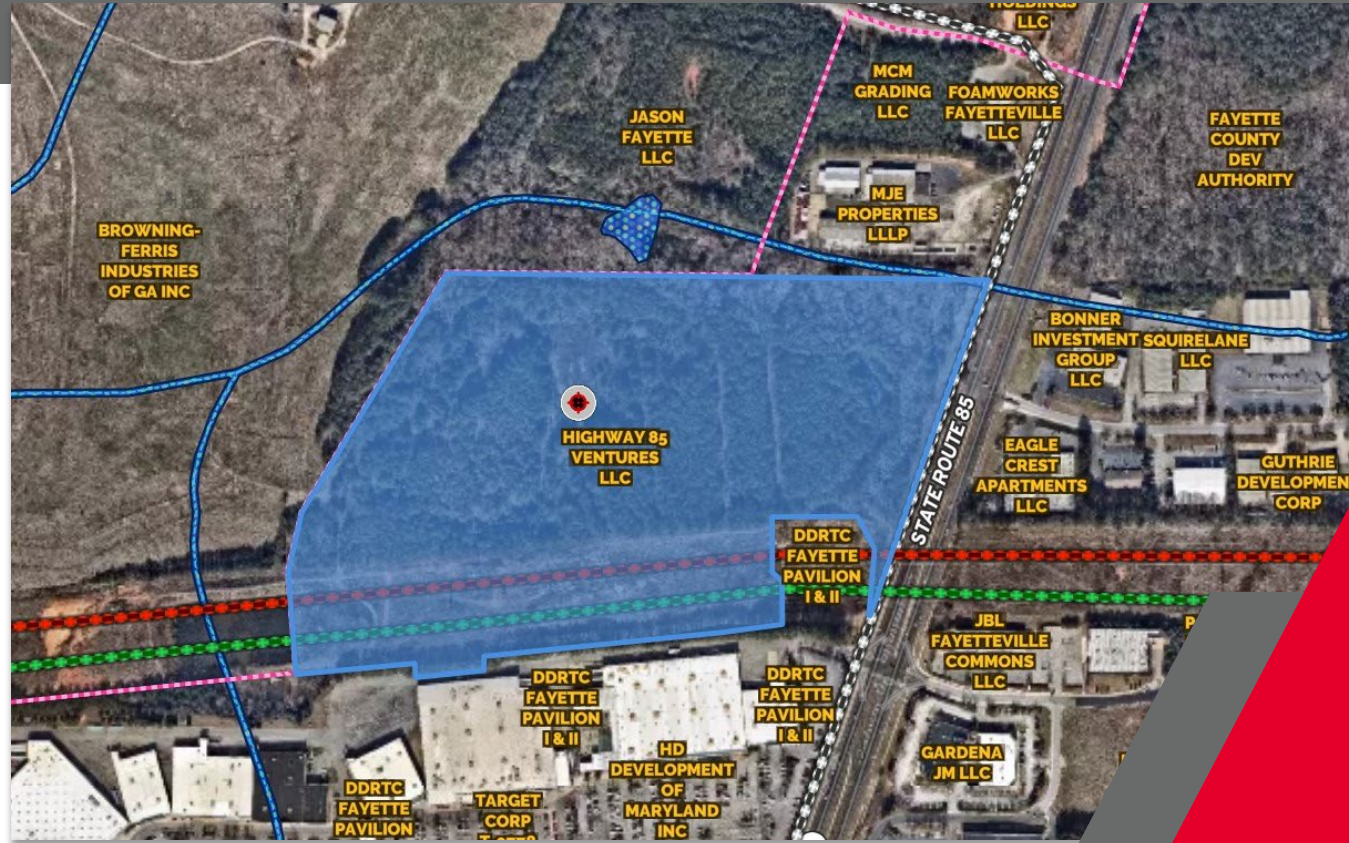
# HIGHWAY 85 NORTH

FAYETTEVILLE, GEORGIA



## PROPERTY HIGHLIGHTS

- Right off 500-Volt and 230-Volt Power Lines
- Water and sewer access
- Zoned BP
- Located in the city of Fayetteville



## CONTACT

**HARRISON MARTIN**

[harrison.martin@cushwake.com](mailto:harrison.martin@cushwake.com)  
Direct +1 404 853 5290  
Mobile +1 404 971 0535

**LISA PITTMAN, SIOR**

[lisa.pittman@cushwake.com](mailto:lisa.pittman@cushwake.com)  
Direct +1 404 853 5277  
Mobile +1 404 309 5309