

1507 S. 10TH STREET

SAN JOSE | CALIFORNIA

±0.72 ACRES FOR LEASE



AVAILABLE NOW!



PROPERTY HIGHLIGHTS

- ±0.72 Acres of Paved and Secured Land
- M-4 (Heavy Industrial Zoning)
- Driveway on 10th Street
- Located Between and Easy Access to
- Across the Street from



For More Information, Please Contact:

FRED EDER
+1 408 489 2263
fred.eder@cushwake.com
LIC #00949342

MIKI CORREA
+1 408 642 0826
miki.correa@cushwake.com
LIC #01718959

300 Santana Row, Fifth Floor
San Jose, California 95128
Main +1 408 615 3400
cushmanwakefield.com

2024 Cushman & Wakefield. All rights reserved. The information contained in this communication is strictly confidential. This information has been obtained from sources believed to be reliable but has not been verified. No warranty or representation, express or implied, is made as to the condition of the property (or properties) referenced herein or as to the accuracy or completeness of the information contained herein, and same is submitted subject to errors, omissions, change of price, rental or other conditions, withdrawal without notice, and to any special listing conditions imposed by the property owner(s). Any projections, opinions or estimates are subject to uncertainty and do not signify current or future property performance.

1507 S. 10TH STREET

SAN JOSE | CALIFORNIA

±0.72 ACRES FOR LEASE



For More Information, Please Contact:

FRED EDER
+1 408 489 2263
fred.eder@cushwake.com
LIC #00949342

MIKI CORREA
+1 408 642 0826
miki.correa@cushwake.com
LIC #01718959

300 Santana Row, Fifth Floor
San Jose, California 95128
Main +1 408 615 3400
cushmanwakefield.com

2024 Cushman & Wakefield. All rights reserved. The information contained in this communication is strictly confidential. This information has been obtained from sources believed to be reliable but has not been verified. No warranty or representation, express or implied, is made as to the condition of the property (or properties) referenced herein or as to the accuracy or completeness of the information contained herein, and same is submitted subject to errors, omissions, change of price, rental or other conditions, withdrawal without notice, and to any special listing conditions imposed by the property owner(s). Any projections, opinions or estimates are subject to uncertainty and do not signify current or future property performance.

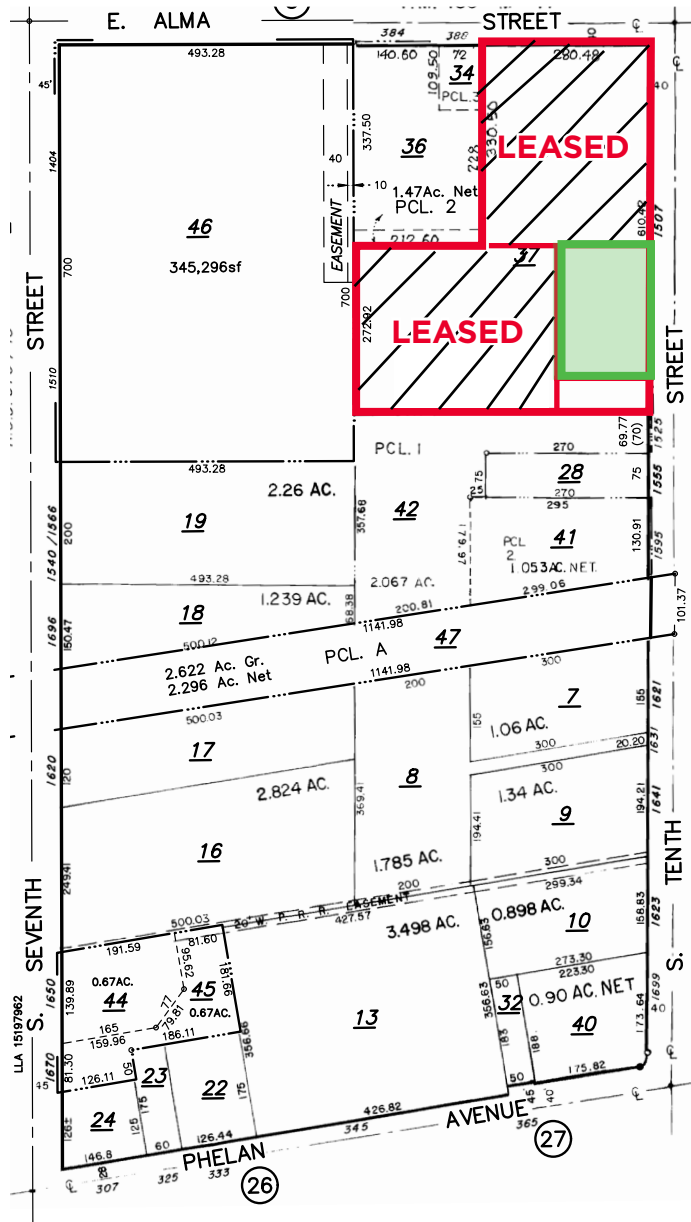
1507 S. 10TH STREET

SAN JOSE | CALIFORNIA

±0.72 ACRES FOR LEASE



PARCEL MAP



PHOTOS



For More Information, Please Contact:

FRED EDER
+1 408 489 2263
fred.eder@cushwake.com
LIC #00949342

MIKI CORREA
+1 408 642 0826
miki.correa@cushwake.com
LIC #01718959

300 Santana Row, Fifth Floor
San Jose, California 95128
Main +1 408 615 3400
cushmanwakefield.com

2024 Cushman & Wakefield. All rights reserved. The information contained in this communication is strictly confidential. This information has been obtained from sources believed to be reliable but has not been verified. No warranty or representation, express or implied, is made as to the condition of the property (or properties) referenced herein or as to the accuracy or completeness of the information contained herein, and same is submitted subject to errors, omissions, change of price, rental or other conditions, withdrawal without notice, and to any special listing conditions imposed by the property owner(s). Any projections, opinions or estimates are subject to uncertainty and do not signify current or future property performance.

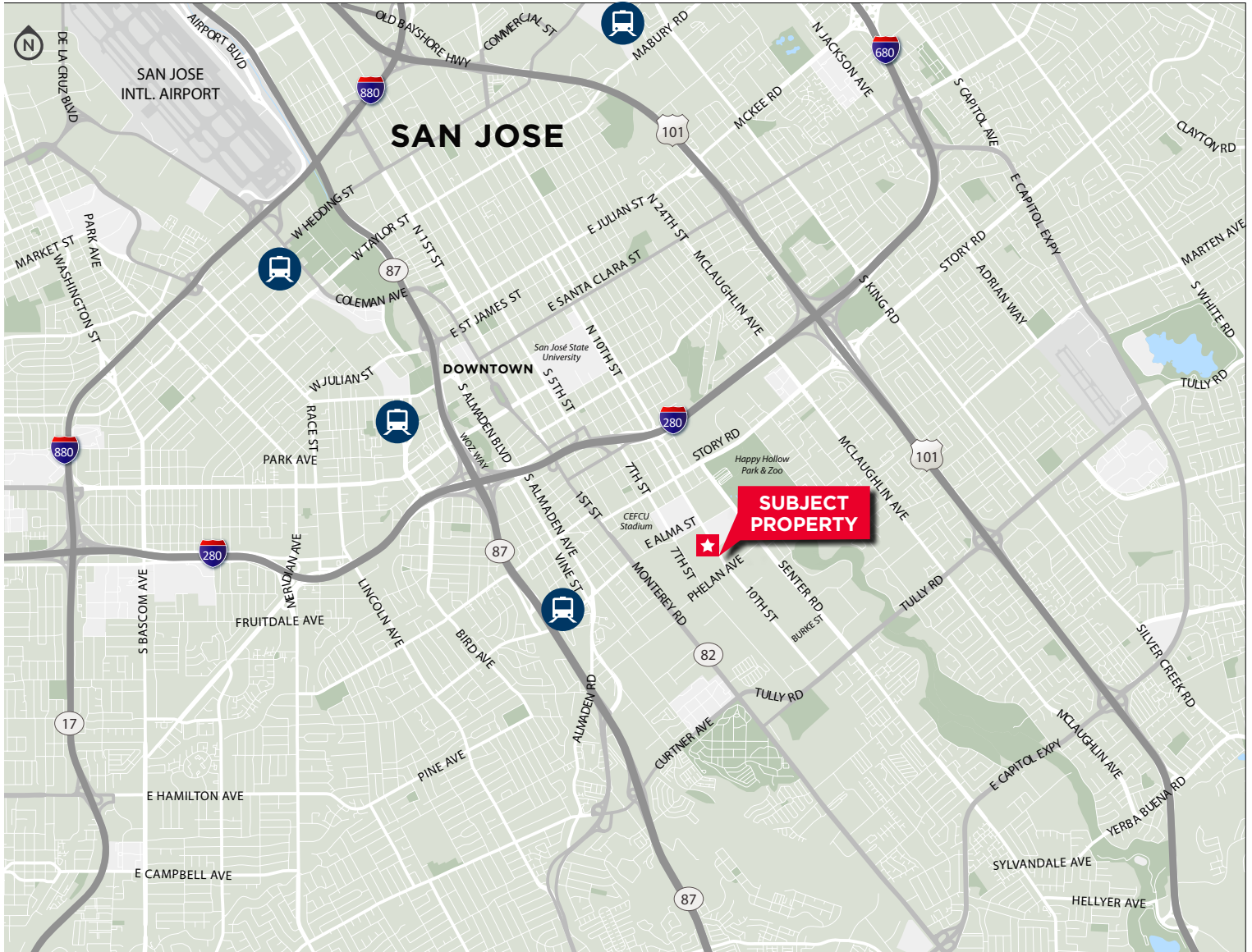
1507 S. 10TH STREET

SAN JOSE | CALIFORNIA

±0.72 ACRES FOR LEASE



LOCATION MAP



For More Information, Please Contact:

FRED EDER
+1 408 489 2263
fred.eder@cushwake.com
LIC #00949342

MIKI CORREA
+1 408 642 0826
miki.correa@cushwake.com
LIC #01718959

300 Santana Row, Fifth Floor
San Jose, California 95128
Main +1 408 615 3400
cushmanwakefield.com

2024 Cushman & Wakefield. All rights reserved. The information contained in this communication is strictly confidential. This information has been obtained from sources believed to be reliable but has not been verified. No warranty or representation, express or implied, is made as to the condition of the property (or properties) referenced herein or as to the accuracy or completeness of the information contained herein, and same is submitted subject to errors, omissions, change of price, rental or other conditions, withdrawal without notice, and to any special listing conditions imposed by the property owner(s). Any projections, opinions or estimates are subject to uncertainty and do not signify current or future property performance.