

# 392 W BROADWAY

BETWEEN SPRING AND BROOME STREETS

## SOHO RETAIL OPPORTUNITY





## COMMENTS

- Currently 7 For All Mankind
- Beautiful light filled space with rear windows in a stung cast-iron building
- Prime location on high end shopping block
- Co Tenants include: Gucci, RRL, Free People, Reiss, Varley, Bonpoit, Cipriani, and Laduree.

## SPECS

GROUND FLOOR: 3,522 SF

LOWER LEVEL: 2,000 SF

TOTAL: 5,522 SF

FRONTAGE: 40 ft

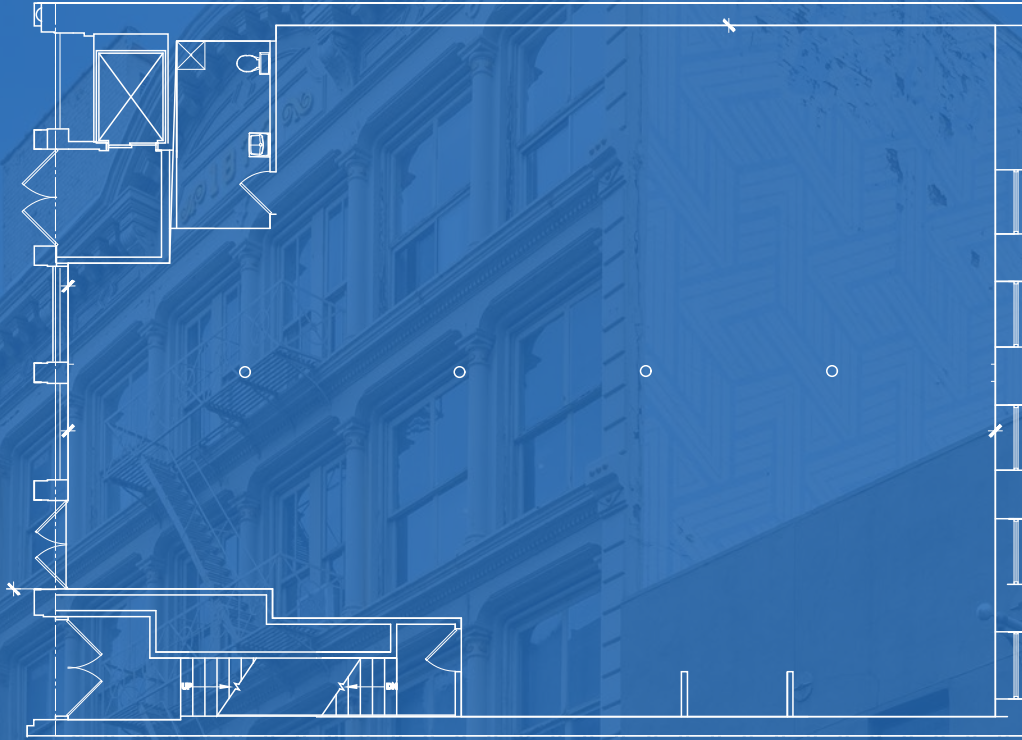
CEILING HTS: 12 ft

POSSESSION: Q1 2025

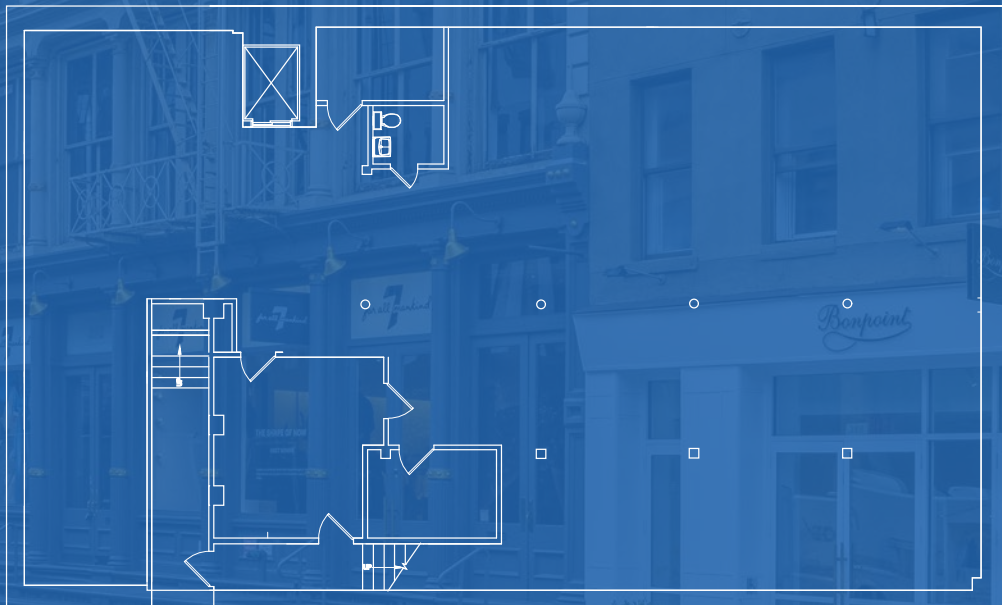


# FLOOR PLANS

GROUND FLOOR: 3,522 SF



LOWER LEVEL: 2,000 SF





PLEASE CONTACT US FOR RETAIL LEASING INQUIRIES

---

**JOANNE PODELL**

212.841.5972

Joanne.Podell@cushwake.com

**MICHAEL SHALOM**

212.698.2543

Michael.Shalom@cushwake.com



©2024 Cushman & Wakefield. All rights reserved. The information contained in this communication is strictly confidential. This information has been obtained from sources believed to be reliable but has not been verified. NO WARRANTY OR REPRESENTATION, EXPRESS OR IMPLIED, IS MADE AS TO THE CONDITION OF THE PROPERTY (OR PROPERTIES) REFERENCED HEREIN OR AS TO THE ACCURACY OR COMPLETENESS OF THE INFORMATION CONTAINED HEREIN, AND SAME IS SUBMITTED SUBJECT TO ERRORS, OMISSIONS, CHANGE OF PRICE, RENTAL OR OTHER CONDITIONS, WITHDRAWAL WITHOUT NOTICE, AND TO ANY SPECIAL LISTING CONDITIONS IMPOSED BY THE PROPERTY OWNER(S). ANY PROJECTIONS, OPINIONS OR ESTIMATES ARE SUBJECT TO UNCERTAINTY AND DO NOT SIGNIFY CURRENT OR FUTURE PROPERTY PERFORMANCE.