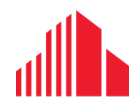




FOR LEASE | PRIME NORTHWEST LONDON RETAIL/OFFICE

1634 HYDE
PARK
ROAD

London, ON N6H 5L7



**CUSHMAN &
WAKEFIELD**

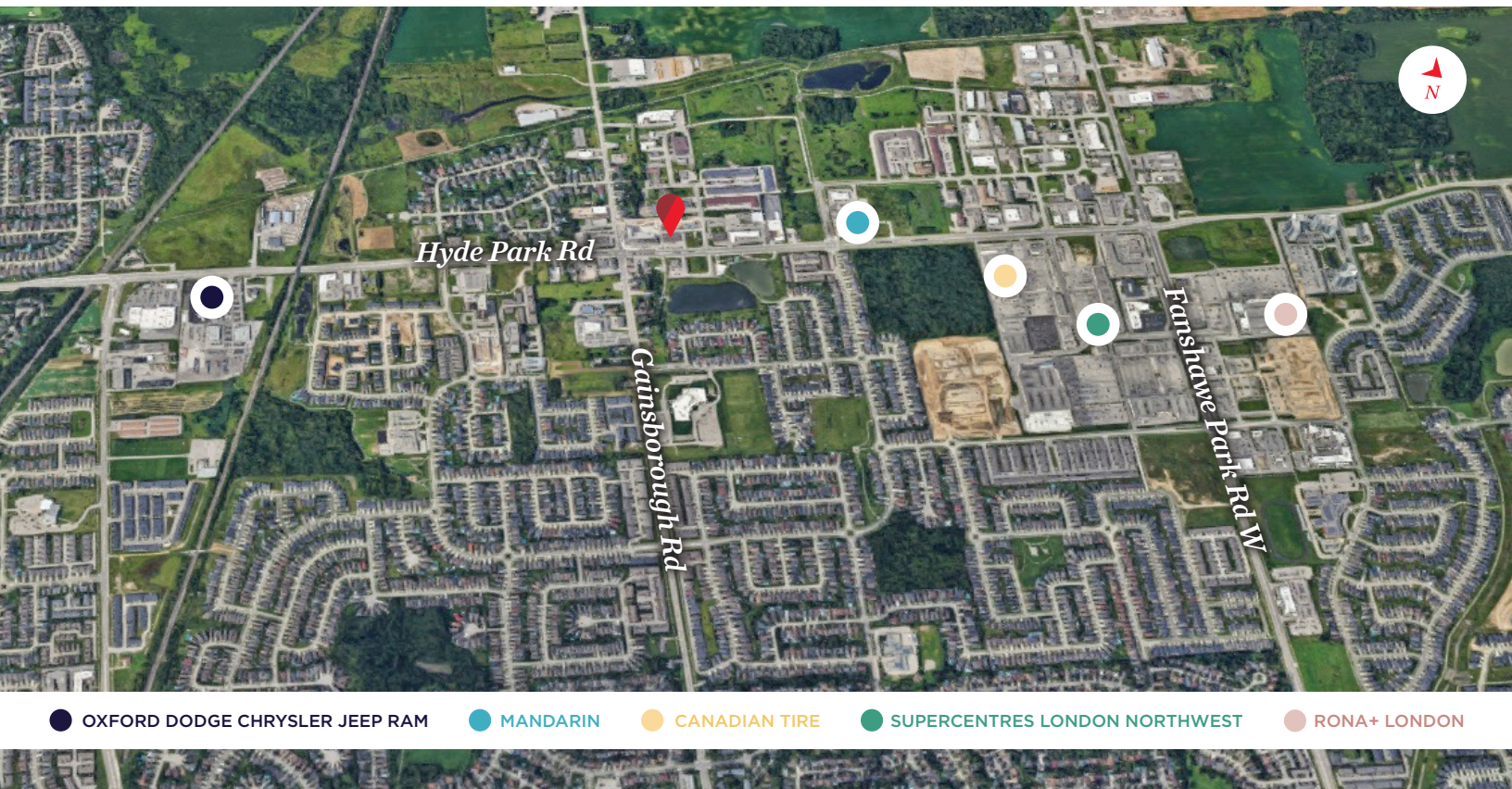
Southwestern Ontario

ABOUT THE PROPERTY

Prime northwest London commercial/retail/office/medical/dental space available for lease.

UNIT	AVAILABLE SPACE	ASKING RENT	ADDITIONAL RENT	ADDITIONAL COMMENTS
2	1,036 SF	\$18.00 PSF Net	\$13.75 PSF (Est.)	<ul style="list-style-type: none"> Former office
3	1,922 SF	\$12.75 PSF Net	\$13.75 PSF (Est.)	<ul style="list-style-type: none"> Former takeout restaurant, has a hood
4	2,042 SF	\$12.75 PSF Net	\$13.75 PSF (Est.)	<ul style="list-style-type: none"> Former takeout restaurant, has a hood
9	808 SF	\$12.50 PSF Net	\$13.75 PSF (Est.)	<ul style="list-style-type: none"> Located on the backside of the building

- **Zoning: BDC** - permits a wide range of uses
- Short term leases
- Utilities are separately metered in the tenant's name
- Located directly on Hyde Park Road, north of Gainsborough Road in northwest London
- Down the street from Walmart, Canadian Tire, Rona and the entire Smartcentres Development



● OXFORD DODGE CHRYSLER JEEP RAM
 ● MANDARIN
 ● CANADIAN TIRE
 ● SUPERCENTRES LONDON NORTHWEST
 ● RONA+ LONDON

TYLER DESJARDINE
 Sales Representative
 519 438 5403
 tyler.desjardine@cushwakeswo.com

CUSHMAN & WAKEFIELD
 SOUTHWESTERN ONTARIO
 850 Medway Park Dr, Suite 201
 London, Ontario N6G 5C6
 www.cushwakeswo.com

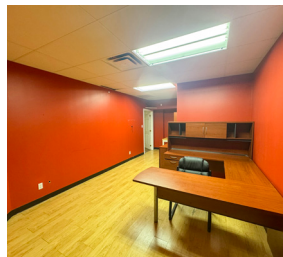
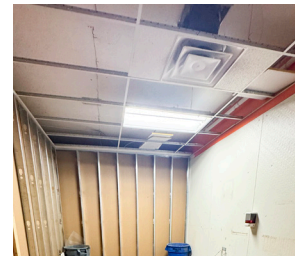
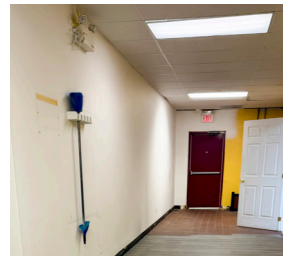

CUSHMAN & WAKEFIELD
 Southwestern Ontario

©2024 Cushman & Wakefield Southwestern Ontario, Real Estate Brokerage, Independently Owned and Operated. A Member of the Cushman & Wakefield Alliance. This information has been obtained from sources believed to be reliable but has not been verified. No warranty or representation, express or implied, is made as to the condition of the property (or properties) referenced herein or as to the accuracy or completeness of the information contained herein, and same is submitted subject to errors, omissions, change of price, rental or other conditions, withdrawal without notice, and to any special listing conditions imposed by the property owner(s). Any projections, opinions or estimates are subject to uncertainty and do not signify current or future property performance. All rights reserved.

PROPERTY IMAGES



UNIT 3



TYLER DESJARDINE
Sales Representative
519 438 5403
tyler.desjardine@cushwakeswo.com

CUSHMAN & WAKEFIELD
SOUTHWESTERN ONTARIO
850 Medway Park Dr, Suite 201
London, Ontario N6G 5C6
www.cushwakeswo.com

CUSHMAN & WAKEFIELD
Southwestern Ontario

PROPERTY IMAGES

UNIT 4



UNIT 9



TYLER DESJARDINE

Sales Representative

519 438 5403

tyler.desjardine@cushwakeswo.com

CUSHMAN & WAKEFIELD
SOUTHWESTERN ONTARIO
850 Medway Park Dr, Suite 201
London, Ontario N6G 5C6
www.cushwakeswo.com

CUSHMAN & WAKEFIELD
Southwestern Ontario

©2024 Cushman & Wakefield Southwestern Ontario, Real Estate Brokerage, Independently Owned and Operated. A Member of the Cushman & Wakefield Alliance. This information has been obtained from sources believed to be reliable but has not been verified. No warranty or representation, express or implied, is made as to the condition of the property (or properties) referenced herein or as to the accuracy or completeness of the information contained herein, and same is submitted subject to errors, omissions, change of price, rental or other conditions, withdrawal without notice, and to any special listing conditions imposed by the property owner(s). Any projections, opinions or estimates are subject to uncertainty and do not signify current or future property performance. All rights reserved.