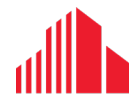




PRIME COMMERCIAL MAIN FLOOR SPACE | FOR LEASE

1656 HYDE PARK ROAD

London, ON N6H 5L7



**CUSHMAN &
WAKEFIELD**

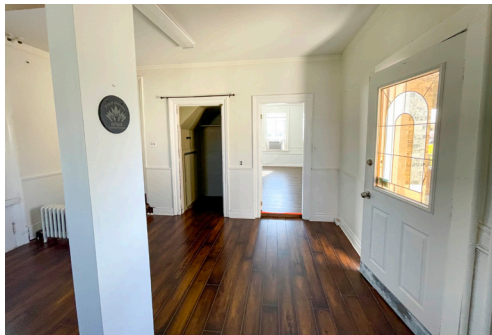
Southwestern Ontario

ABOUT THE PROPERTY

Prime commercial space at the intersection of Hyde Park Road and North Routledge Park in northwest London

AVAILABLE SPACE	GROSS ASKING RENT
Approx. 750 SF	\$1,350 per month + Utilities + HST

- **Zoning:** Business District Commercial (BDC)
- **Parking:** Free spaces available on site
- High traffic location
- Perfectly suited for a wide range of office or retail applications
- Available space occupies the main floor of a free-standing building with direct exposure to Hyde Park Road ensuring excellent visibility
- This property is located in a well-established and bustling retail/office hub



TYLER DESJARDINE

Sales Representative

519 438 5403

tyler.desjardine@cushwakeswo.com

CUSHMAN & WAKEFIELD
SOUTHWESTERN ONTARIO
850 Medway Park Dr, Suite 201
London, Ontario N6G 5C6
www.cushwakeswo.com

 **CUSHMAN & WAKEFIELD**
Southwestern Ontario

©2024 Cushman & Wakefield Southwestern Ontario, Real Estate Brokerage, Independently Owned and Operated. A Member of the Cushman & Wakefield Alliance. This information has been obtained from sources believed to be reliable but has not been verified. No warranty or representation, express or implied, is made as to the condition of the property (or properties) referenced herein or as to the accuracy or completeness of the information contained herein, and same is submitted subject to errors, omissions, change of price, rental or other conditions, withdrawal without notice, and to any special listing conditions imposed by the property owner(s). Any projections, opinions or estimates are subject to uncertainty and do not signify current or future property performance. All rights reserved.