

2206 BEECHMONT AVE

CINCINNATI, OH 45230



For Lease / Retail Space

**WE ARE
THE CENTER
OF RETAIL**



2206 BEECHMONT AVE

CINCINNATI, OH 45230

RETAIL SPACE

2,000 SF +
2,000 SF Basement

RENT

\$19.00/SF NNN

COMMENTS

- Former Key Bank in Mt. Washington
- 2,000 SF on 1st Floor (20' x 100')
- Additional 2,000 SF Basement for Storage included
- Finished bathroom on both floors
- 29 car shared parking
- Building sits on the corner of Beechmont Ave & Corbly Street
- Across from Kroger & Walgreens
- Over 32,000 vehicles per day



NEIGHBORHOOD DEMOGRAPHICS



POPULATION

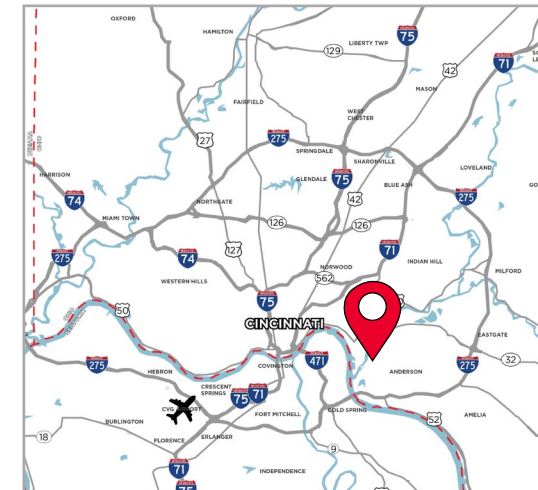


AVERAGE
HOUSEHOLD INCOME



DAYTIME
POPULATION

1 Mile	11,902	\$103,413	4,383
3 Miles	46,190	\$149,861	30,658
5 Miles	154,078	\$148,970	97,087



2206 BEECHMONT AVE

CINCINNATI, OH 45230



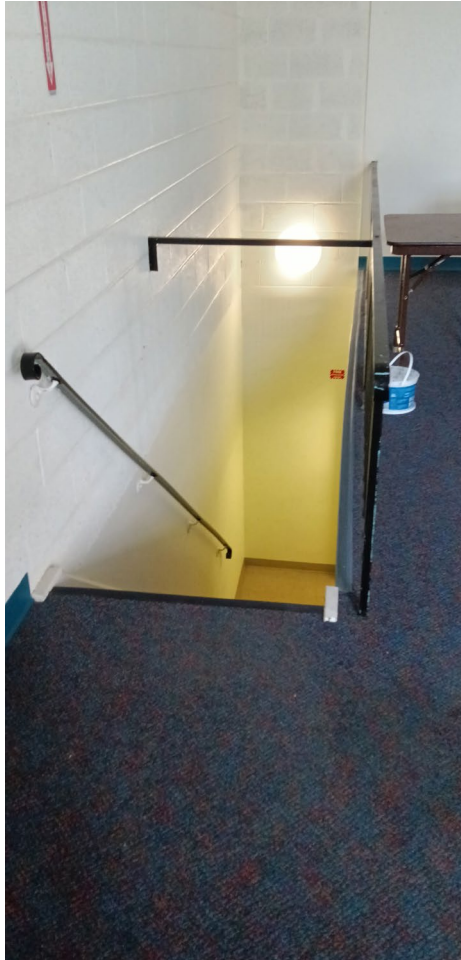
Rob Murphy / Director / rob.p.murphy@cushwake.com / +1 513 763 3033
Clare Holtmeier / Associate / clare.holtmeier@cushwake.com / +1 513 322 0776

Cushman & Wakefield Copyright 2024. No warranty or representation, express or implied, is made to the accuracy or completeness of the information contained herein, and same is submitted subject to errors, omissions, change of price, rental or other conditions, withdrawal without notice, and to any special listing conditions imposed by the property owner(s). As applicable, we make no representation as to the condition of the property (or properties) in question.

2206 BEECHMONT AVE

CINCINNATI, OH 45230

BASEMENT STORAGE



Rob Murphy / Director / rob.p.murphy@cushwake.com / +1 513 763 3033
Clare Holtmeier / Associate / clare.holtmeier@cushwake.com / +1 513 322 0776

Cushman & Wakefield Copyright 2024. No warranty or representation, express or implied, is made to the accuracy or completeness of the information contained herein, and same is submitted subject to errors, omissions, change of price, rental or other conditions, withdrawal without notice, and to any special listing conditions imposed by the property owner(s). As applicable, we make no representation as to the condition of the property (or properties) in question.

2206 BEECHMONT AVE

CINCINNATI, OH 45230



Rob Murphy / Director / rob.p.murphy@cushwake.com / +1 513 763 3033
Clare Holtmeier / Associate / clare.holtmeier@cushwake.com / +1 513 322 0776

Cushman & Wakefield Copyright 2024. No warranty or representation, express or implied, is made to the accuracy or completeness of the information contained herein, and same is submitted subject to errors, omissions, change of price, rental or other conditions, withdrawal without notice, and to any special listing conditions imposed by the property owner(s). As applicable, we make no representation as to the condition of the property (or properties) in question.

2206 BEECHMONT AVE

CINCINNATI, OH 45230

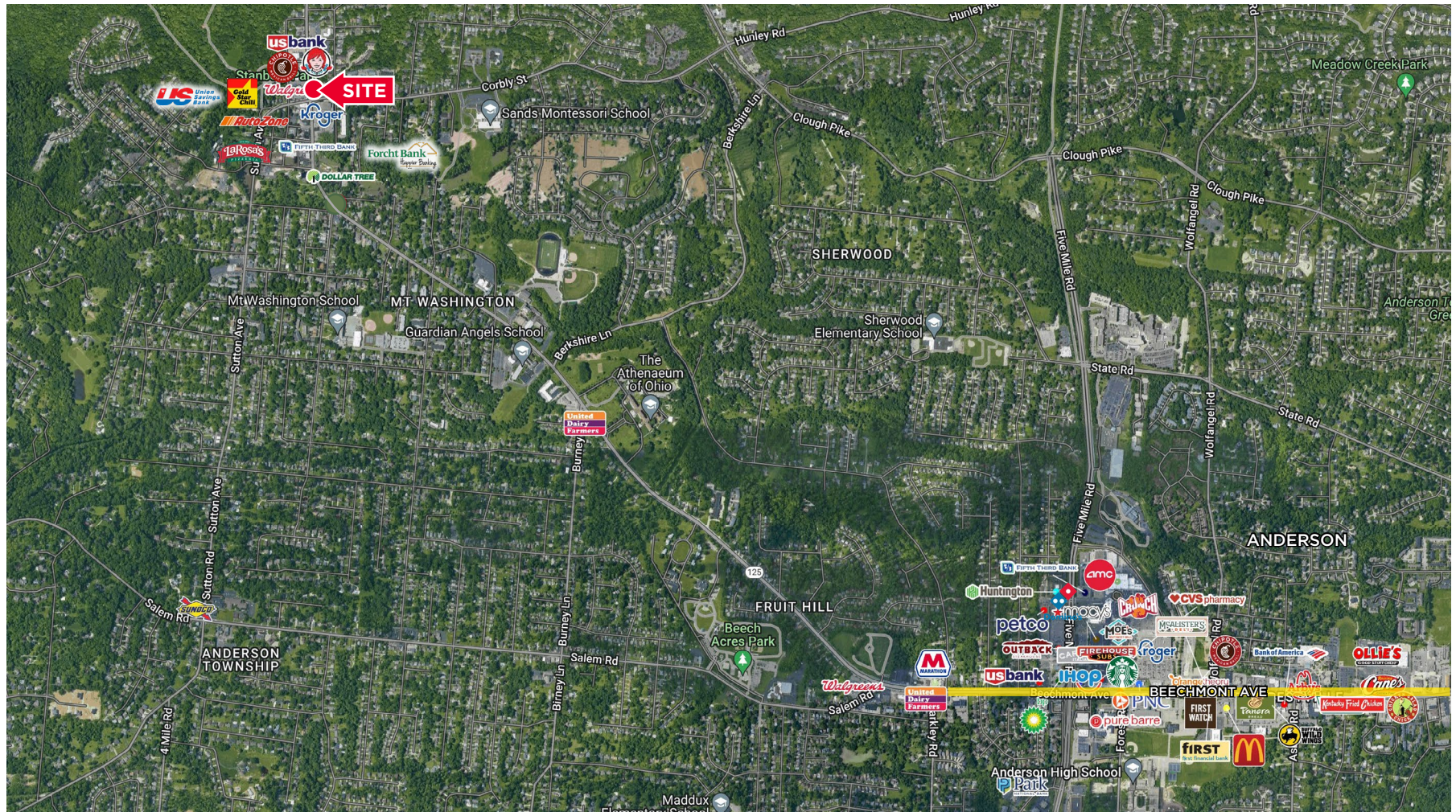


Rob Murphy / Director / rob.p.murphy@cushwake.com / +1 513 763 3033
Clare Holtmeier / Associate / clare.holtmeier@cushwake.com / +1 513 322 0776

Cushman & Wakefield Copyright 2024. No warranty or representation, express or implied, is made to the accuracy or completeness of the information contained herein, and same is submitted subject to errors, omissions, change of price, rental or other conditions, withdrawal without notice, and to any special listing conditions imposed by the property owner(s). As applicable, we make no representation as to the condition of the property (or properties) in question.

2206 BEECHMONT AVE

CINCINNATI, OH 45230



Rob Murphy / Director / rob.p.murphy@cushwake.com / +1 513 763 3033
Clare Holtmeier / Associate / clare.holtmeier@cushwake.com / +1 513 322 0776

Cushman & Wakefield Copyright 2024. No warranty or representation, express or implied, is made to the accuracy or completeness of the information contained herein, and same is submitted subject to errors, omissions, change of price, rental or other conditions, withdrawal without notice, and to any special listing conditions imposed by the property owner(s). As applicable, we make no representation as to the condition of the property (or properties) in question.