

# CHILLIWACK WEST INDUSTRIAL PARK

TURNKEY INDUSTRIAL LAND LEASE OPPORTUNITY  
1 TO 28 ACRES



**FOR LEASE**

**7650 ARNOLD ROAD**  
Chilliwack, BC

 **CUSHMAN &  
WAKEFIELD**

**RANDY SWANT**  
Vice President  
+1 604 760 5049  
randy.swant@ca.cushwake.com

**BURTON VAN ALSTINE**  
Senior Vice President  
+1 604 880 4222  
burton.vanalstine@ca.cushwake.com

Suite 1200 - 700 West Georgia Street  
PO Box 10023, Pacific Centre  
Vancouver, BC V7Y 1A1  
+1 604 683 3111 / [cushmanwakefield.ca](http://cushmanwakefield.ca)







**FOR LEASE**

**7650 ARNOLD ROAD**  
Chilliwack, BC

**CUSHMAN &  
WAKEFIELD**



**Fraser River**

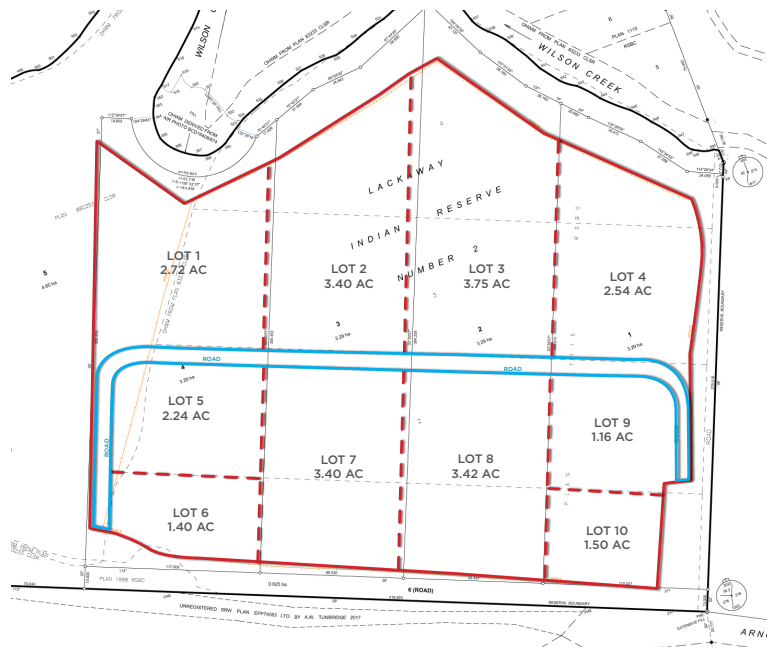
**Chilliwack West  
Industrial Park**

**Private Road**

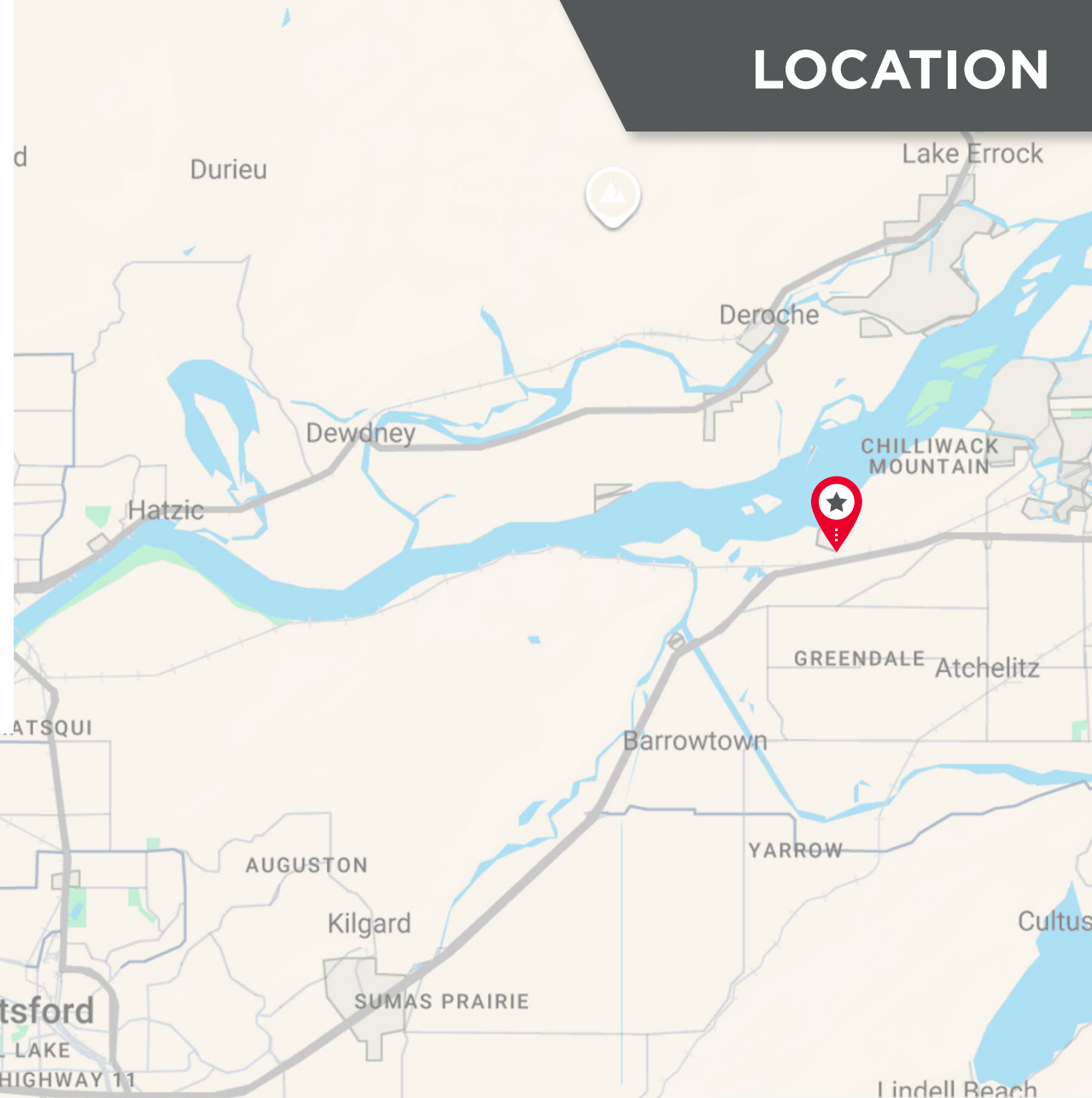
**Arnold Road**



# LOCATION



## SMALL LOT SUBDIVISION CONCEPT PLAN



**FOR LEASE**

**7650 ARNOLD ROAD**  
Chilliwack, BC

**CUSHMAN &  
WAKEFIELD**

For further information, please contact exclusive listing agents for Cushman & Wakefield ULC

**RANDY SWANT**

Vice President  
+1 604 760 5049  
randy.swant@ca.cushwake.com

**BURTON VAN ALSTINE**

Senior Vice President  
+1 604 880 4222  
burton.vanalstine@ca.cushwake.com

©2024 Cushman & Wakefield ULC. All rights reserved. The information contained in this communication is strictly confidential. This information has been obtained from sources believed to be reliable but has not been verified. NO WARRANTY OR REPRESENTATION, EXPRESS OR IMPLIED, IS MADE AS TO THE CONDITION OF THE PROPERTY (OR PROPERTIES) REFERENCED HEREIN OR AS TO THE ACCURACY OR COMPLETENESS OF THE INFORMATION CONTAINED HEREIN, AND SAME IS SUBMITTED SUBJECT TO ERRORS, OMISSIONS, CHANGE OF PRICE, RENTAL OR OTHER CONDITIONS, WITHDRAWAL WITHOUT NOTICE, AND TO ANY SPECIAL LISTING CONDITIONS IMPOSED BY THE PROPERTY OWNER(S). ANY PROJECTIONS, OPINIONS OR ESTIMATES ARE SUBJECT TO UNCERTAINTY AND DO NOT SIGNIFY CURRENT OR FUTURE PROPERTY PERFORMANCE.