



FOR LEASE

# CENTENNIAL CENTRE

4806 39 Street, St. Paul, AB

**UP TO 3,641 SF RETAIL SPACE**

## PROPERTY HIGHLIGHTS

- Located in the Northeast part of the province, 200 kilometers from Edmonton.
- Area tenants include Canadian Tire, Dollarama, Shoppers Drug Mart and Sobeys.
- Excellent exposure onto Highway 29 with over 11,000 vehicles per day passing by the site.

**CUSHMAN & WAKEFIELD**  
Edmonton  
Suite 2700, TD Tower  
10088 - 102 Avenue  
Edmonton, AB T5J 2Z1  
[www.cwedm.com](http://www.cwedm.com)

**Dustin Bateyko**  
Partner  
780 702 4257  
[dustin.bateyko@cwedm.com](mailto:dustin.bateyko@cwedm.com)



# PROPERTY DETAILS

Municipal Address: 4806 39 Street,  
St. Paul, AB

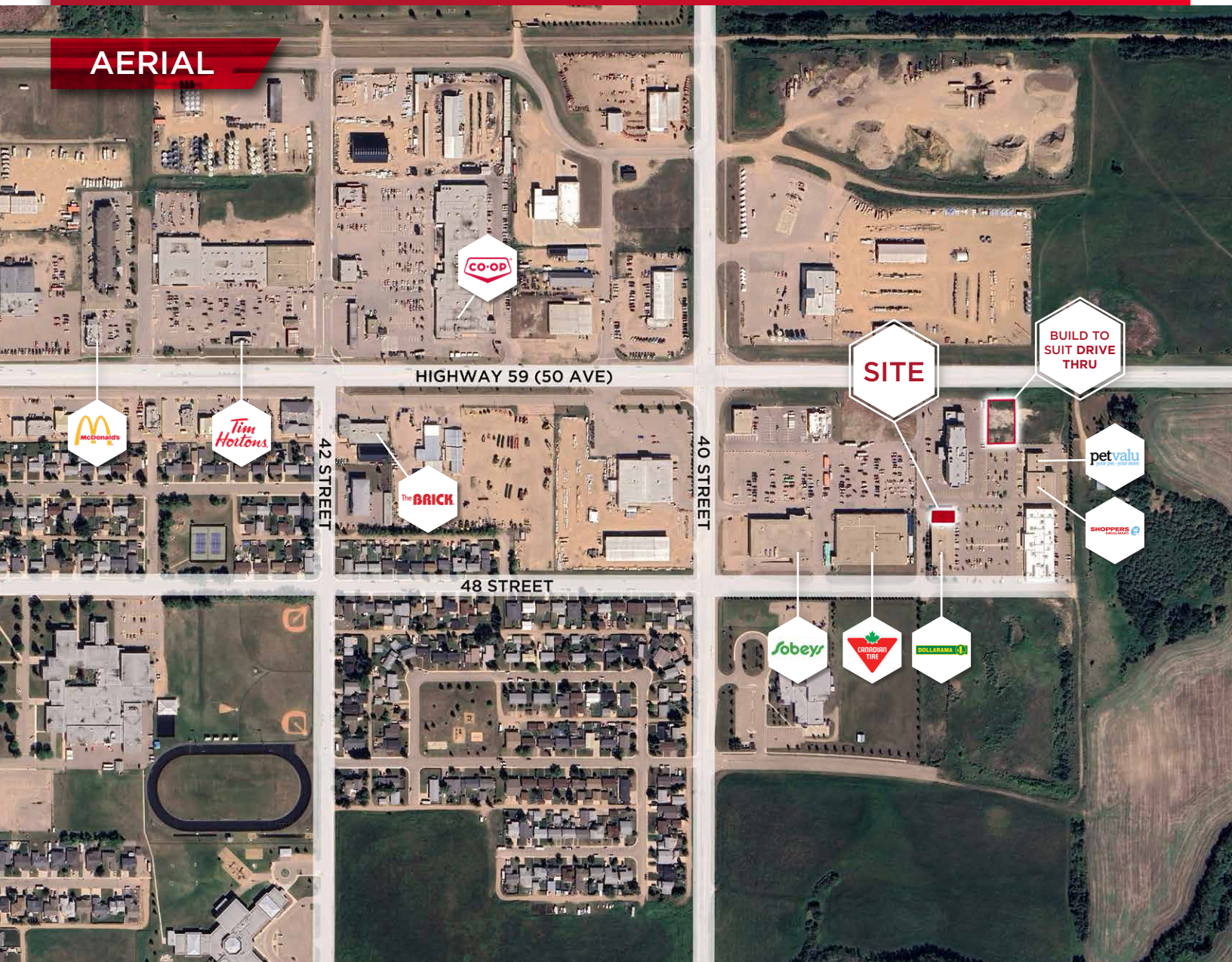
Lease Rate: Market

Size: Up to 3,641 SF  
Demisable Endcap  
and a Build to Suit  
with a Drive Thru  
opportunity

Op. Costs: \$8.90 per SF

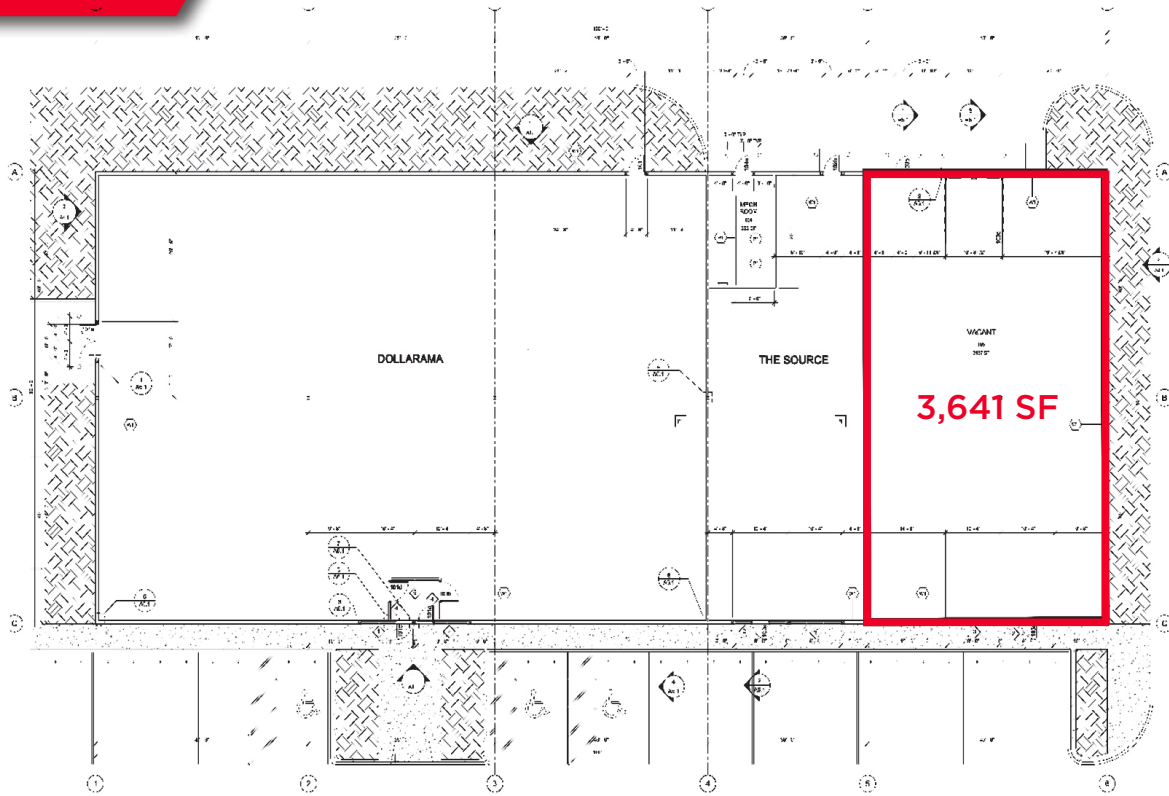
Availability: Immediate

## AERIAL





# SITE PLAN



# BUILT TO SUIT DRIVE THRU





**CUSHMAN &  
WAKEFIELD**  
Edmonton

**Dustin Bateyko**  
Partner

780 702 4257

[dustin.bateyko@cwedm.com](mailto:dustin.bateyko@cwedm.com)