

FOR LEASE
±7,027 SF



5302 LA BRANCH ST.

HOUSTON, TX 77004

MICHAEL “MIKE” PITTMAN II, CCIM

Director
+1 346 396 4006
mike.pittman@cushwake.com

1330 Post Oak Blvd.
Suite 2700, Houston, TX 77056
+1 713 877 1700
cushmanwakefield.com

AREA OVERVIEW

Situated south of Main in the Museum District with walkability to Herman Park, medical center, metro rail, and area museums.

AVAILABLE SPACE :

- ±7,027 SF Building
- ±4,400 Office Space
- ±2,267 1st Floor Warehouse Space

LOT SIZE : 0.19 AC

LEASE RATE : CONTACT BROKER



PROPERTY HIGHLIGHTS

- 7 spacious private offices located on the 2nd floor.
- Includes breakroom and conference room.
- 9 covered parking spaces.
- Has easy access to Highway 288, Highway 59-SW Frwy, Interstate 45, and downtown.

NEIGHBORHOOD DEMOGRAPHICS

2022



POPULATION



AVERAGE
HOUSEHOLDS INCOME

1 MILE

22,158

\$121,740

3 MILES

204,657

\$134,871

5 MILES

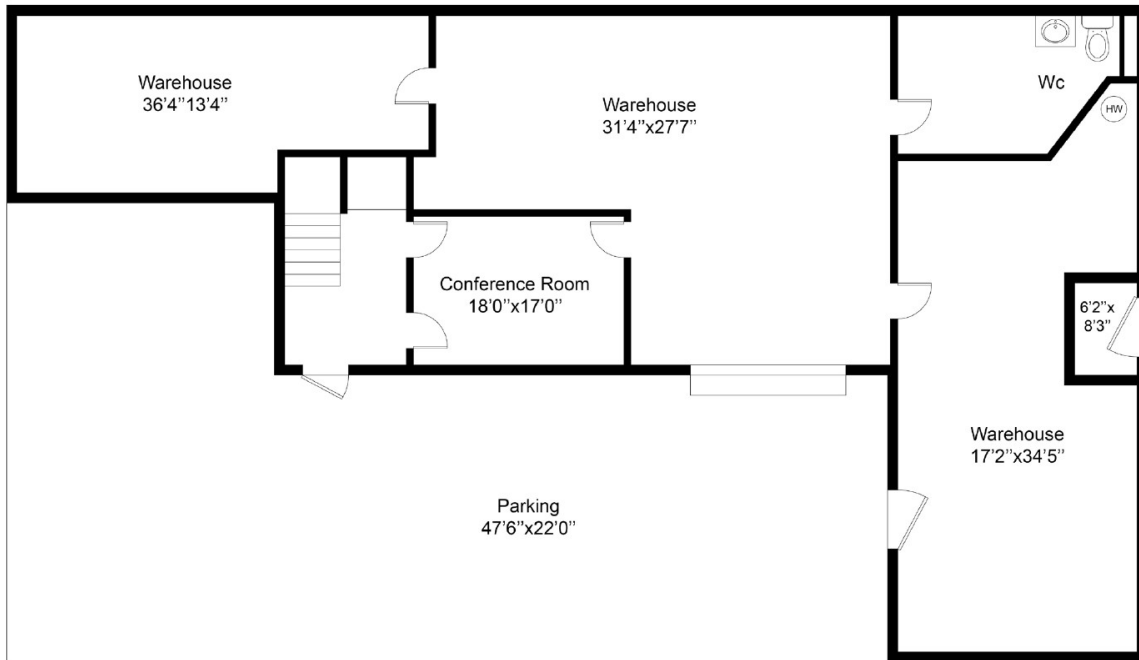
459,015

\$134,135

FLOOR PLAN

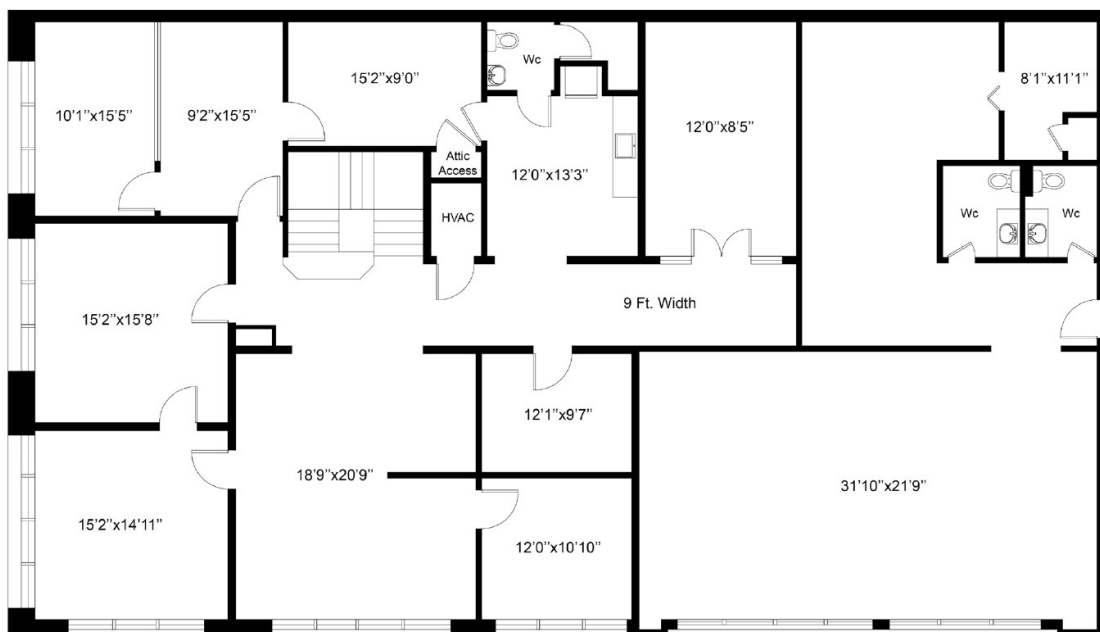
1ST FLOOR WAREHOUSE SPACE

±2,267 SF

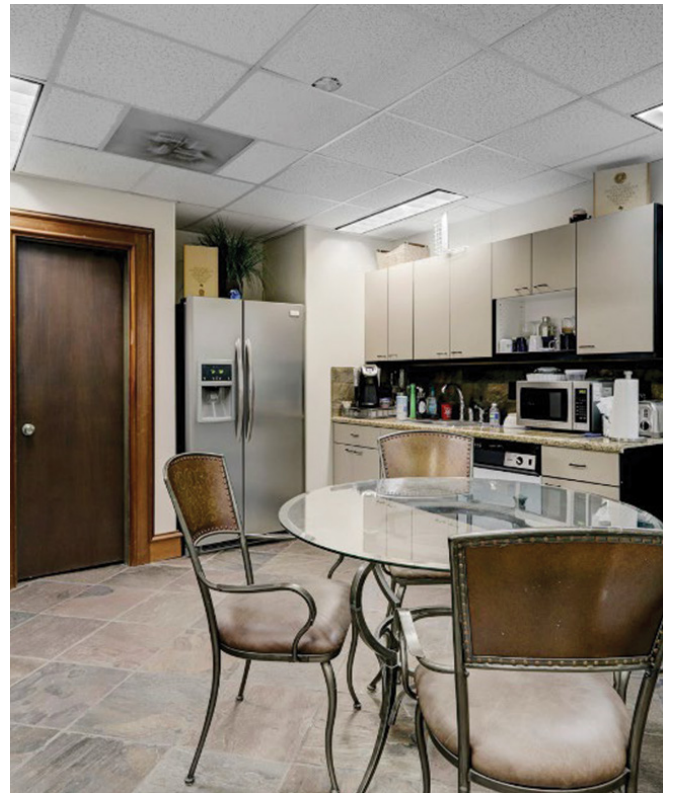
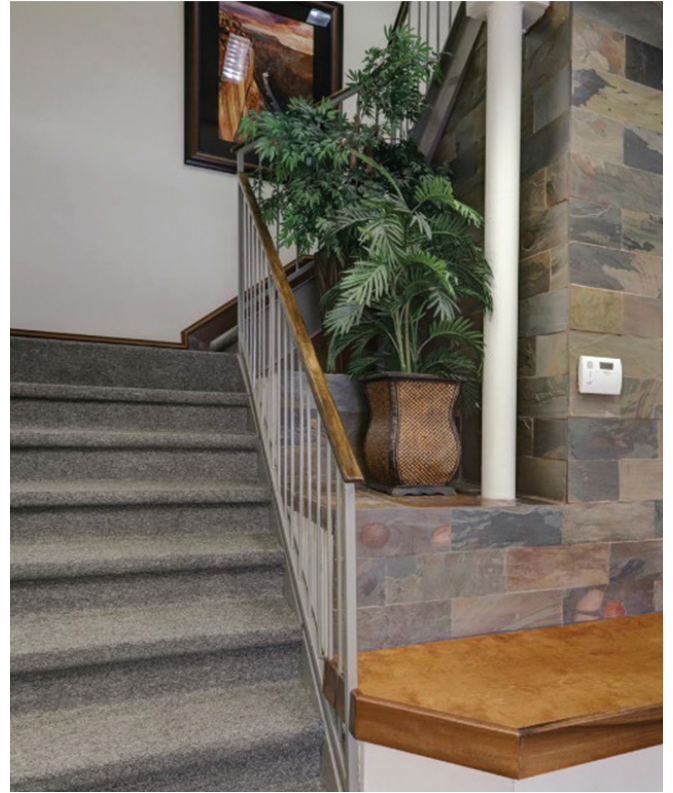


2ND FLOOR OFFICE SPACE

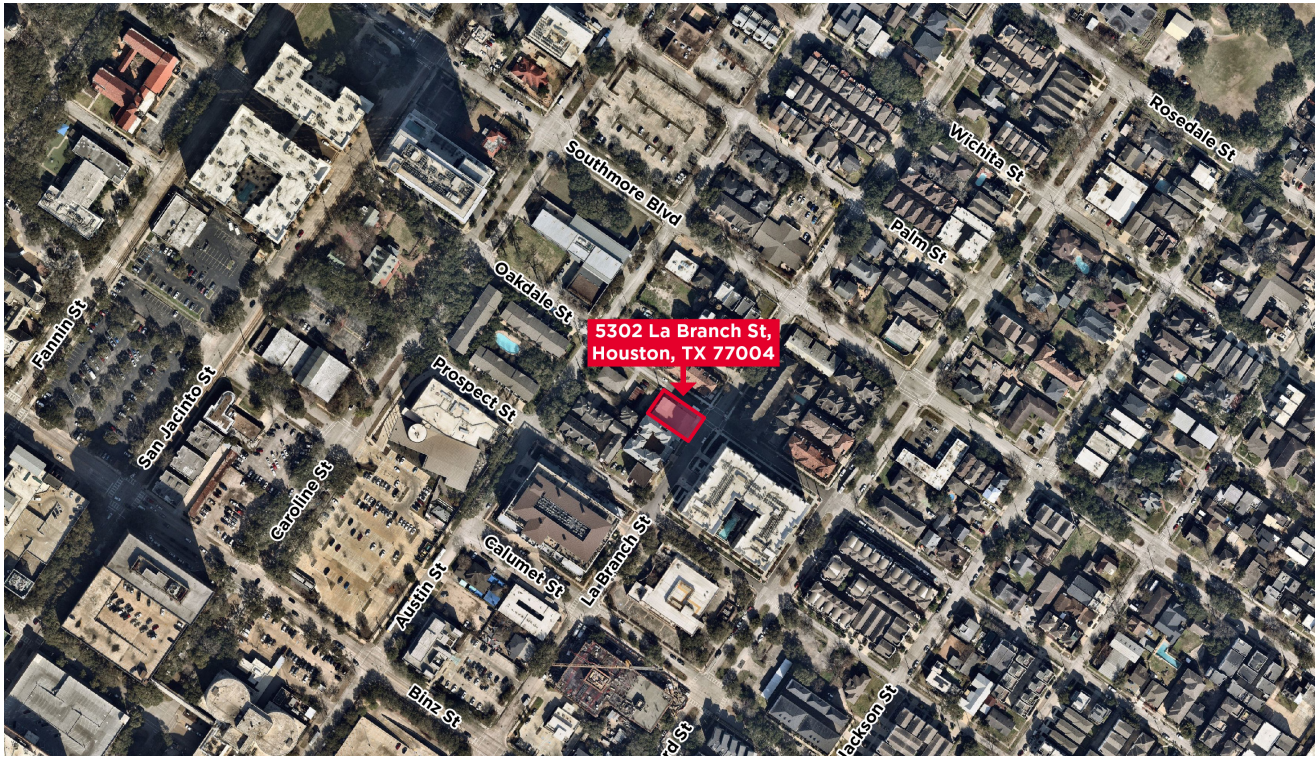
±4,400 SF



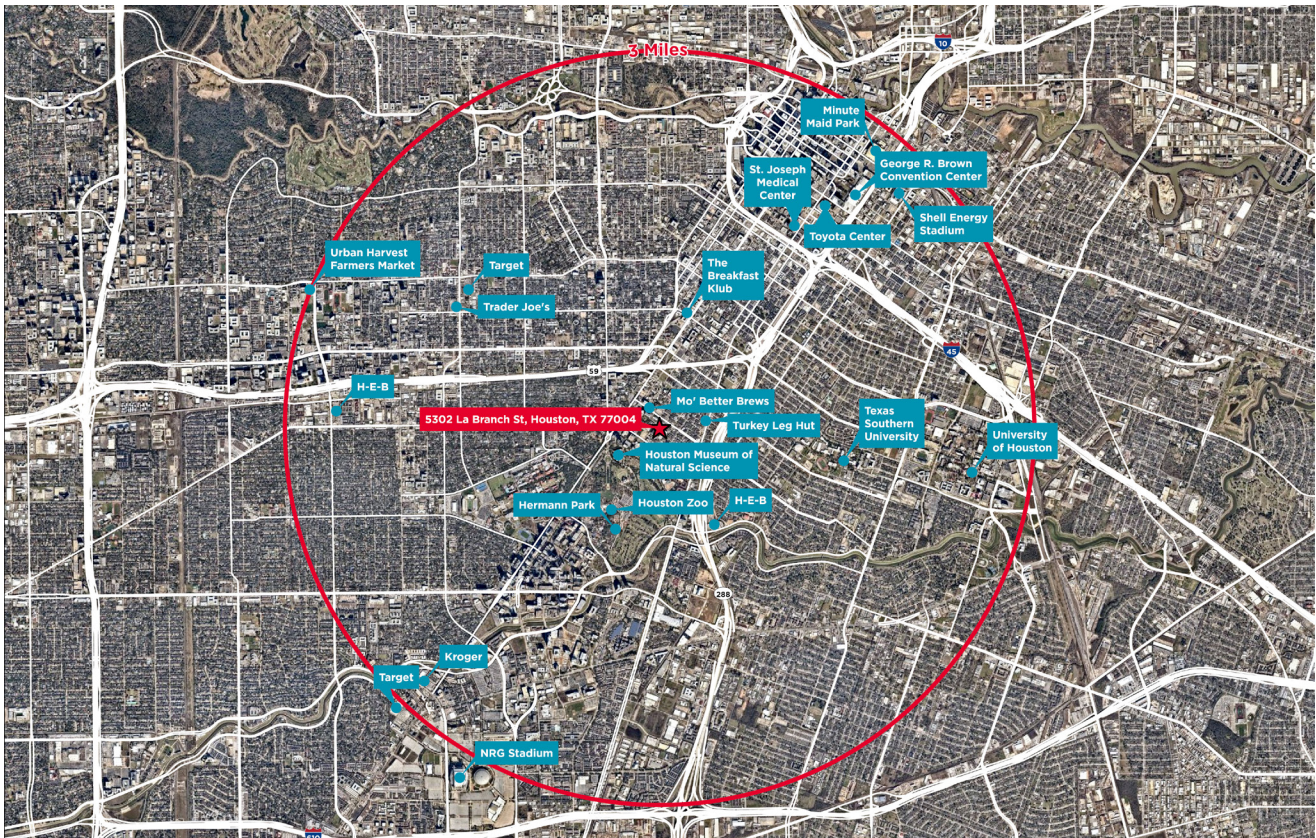
PROPERTY PHOTOS



AERIAL MAP



AMENITIES MAP



CONTACT INFORMATION

MICHAEL “MIKE” PITTMAN II, CCIM

Director
+1 346 396 4006
mike.pittman@cushwake.com

1330 Post Oak Blvd.
Suite 2700, Houston, TX 77056
+1 713 877 1700
cushmanwakefield.com



©2023 Cushman & Wakefield. All rights reserved. The information contained in this communication is strictly confidential. This information has been obtained from sources believed to be reliable but has not been verified. NO WARRANTY OR REPRESENTATION, EXPRESS OR IMPLIED, IS MADE AS TO THE CONDITION OF THE PROPERTY (OR PROPERTIES) REFERENCED HEREIN OR AS TO THE ACCURACY OR COMPLETENESS OF THE INFORMATION CONTAINED HEREIN, AND SAME IS SUBMITTED SUBJECT TO ERRORS, OMISSIONS, CHANGE OF PRICE, RENTAL OR OTHER CONDITIONS, WITHDRAWAL WITHOUT NOTICE, AND TO ANY SPECIAL LISTING CONDITIONS IMPOSED BY THE PROPERTY OWNER(S). ANY PROJECTIONS, OPINIONS OR ESTIMATES ARE SUBJECT TO UNCERTAINTY AND DO NOT SIGNIFY CURRENT OR FUTURE PROPERTY PERFORMANCE.