



CHEYENNE AVENUE

COMMERCE STREET

FOR SALE ±9.55 ACRES

CHEYENNE AVENUE LAND

CHEYENNE AVE. & COMMERCE ST.
NORTH LAS VEGAS, NV 89032



CUSHMAN &
WAKEFIELD

CHEYENNE AVENUE LAND

CHEYENNE AVE. & COMMERCE ST.

Property Information

Situated in the heart of the North Las Vegas submarket, this land parcel provides excellent connectivity to the I-15 via Cheyenne Avenue Interchange.

- Adjacent to a significant amount of existing industrial developments with easy access to the I-15 making it ideal for a variety of users.
- Water and Sewer at Cheyenne Avenue per city of North Las Vegas utility plan
- Curb cuts on the perimeter

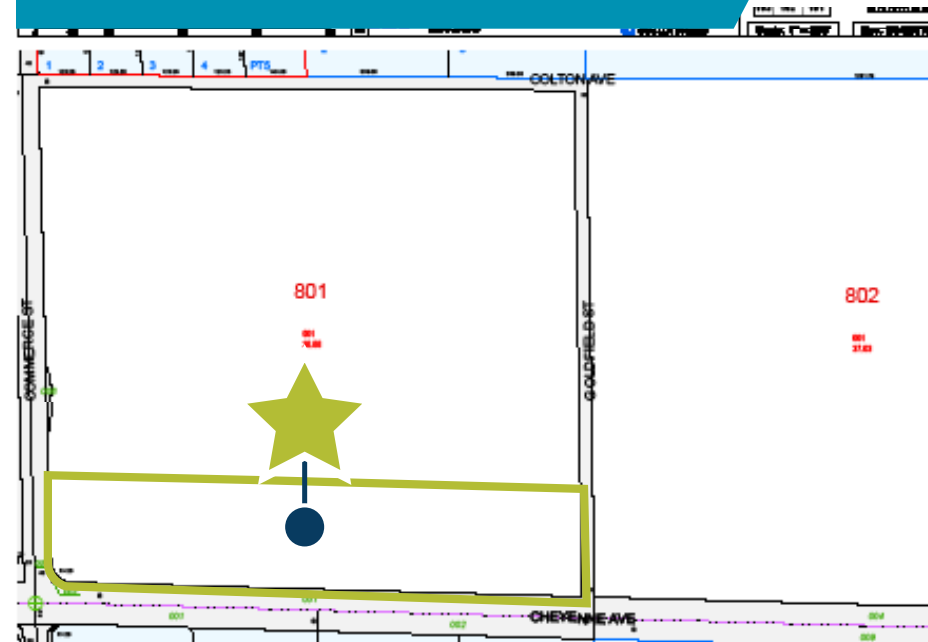
Asking Price: \$15,000,000

Total Size: ±9.55 Acres

APN: 139-10-80-1001

Zoning: M-2, North Las Vegas

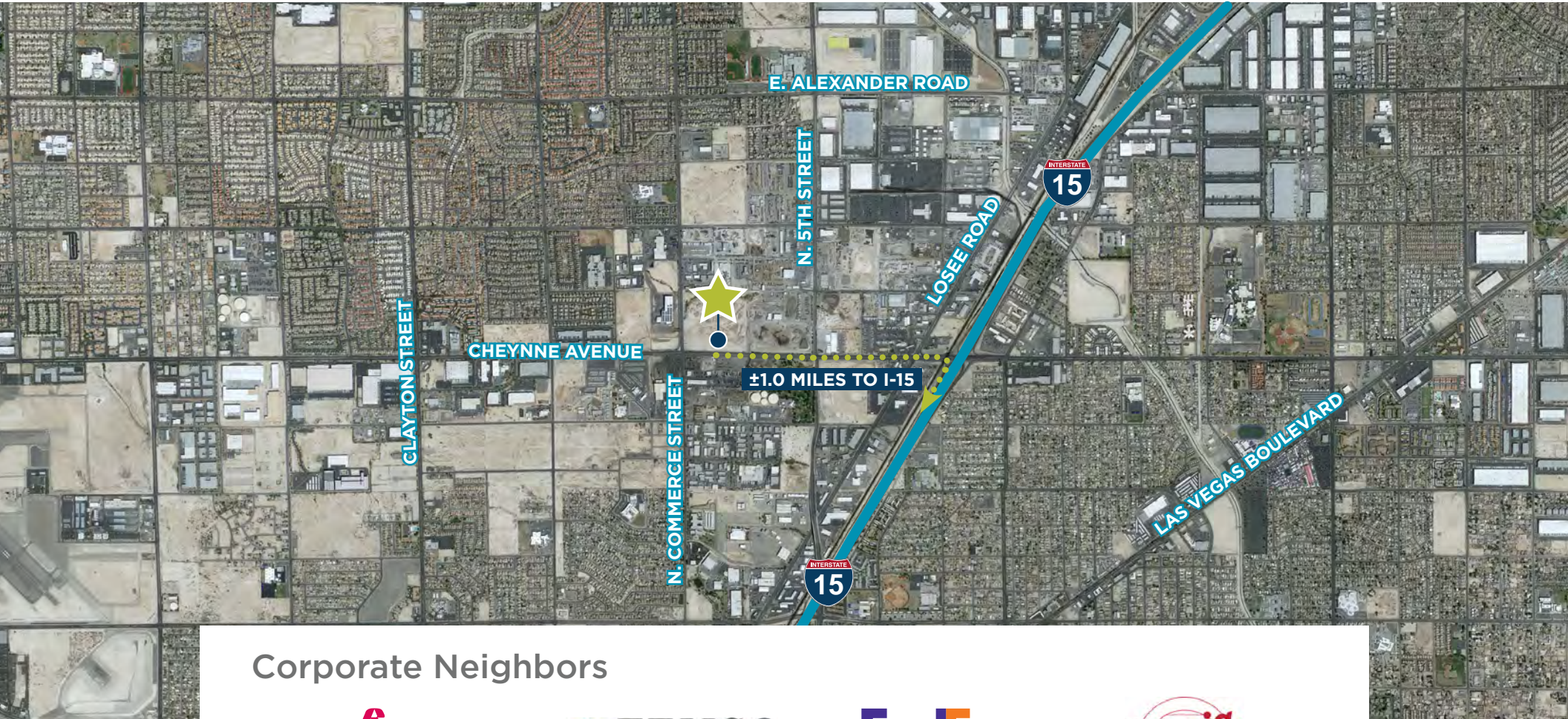
PARCEL MAP



CHEYENNE AVE. FRONTAGE

CHEYENNE AVENUE LAND

CHEYENNE AVE. & COMMERCE ST



Corporate Neighbors





FOR MORE INFORMATION, CONTACT:

GREG TASSI, SIOR

Executive Managing Director
+1 702 605 1713
greg.tassi@cushwake.com

NICK ABRAHAM

Director
+1 702 605 1620
nick.abraham@cushwake.com

©2022 Cushman & Wakefield. All rights reserved. The material in this presentation has been prepared solely for information purposes, and is strictly confidential. Any disclosure, use, copying or circulation of this presentation (or the information contained within it) is strictly prohibited, unless you have obtained Cushman & Wakefield's prior written consent. The views expressed in this presentation are the views of the author and do not necessarily reflect the views of Cushman & Wakefield. Neither this presentation nor any part of it shall form the basis of, or be relied upon in connection with any offer, or act as an inducement to enter into any contract or commitment whatsoever. NO REPRESENTATION OR WARRANTY IS GIVEN, EXPRESS OR IMPLIED, AS TO THE ACCURACY OF THE INFORMATION CONTAINED WITHIN THIS PRESENTATION, AND CUSHMAN & WAKEFIELD IS UNDER NO OBLIGATION TO SUBSEQUENTLY CORRECT IT IN THE EVENT OF ERRORS.

