



FOR SALE



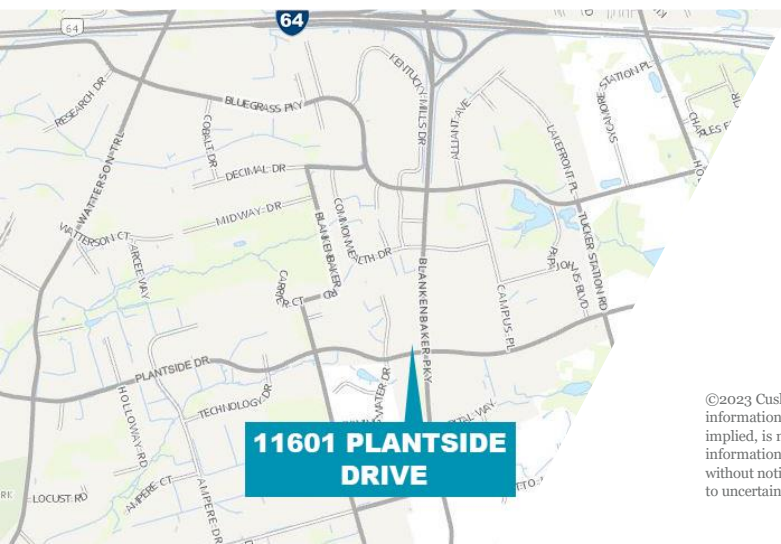
11601 PLANTSIDE DRIVE

Louisville, KY 40299

5,700 SF

PROPERTY HIGHLIGHTS

- 5,700 sf building situated on 1.87 acres
- Built in 2007 and renovated in 2021
- Well-maintained surface lot with approximately 60 parking spaces
- Zoned C-2
- Turn-key opportunity
- Located just off of Blankenbaker Pkwy at Plantside Dr, and less than 1 mile to I-64



**11601 PLANTSIDE
DRIVE**

SAM GRAY

Senior Associate
+1 502 589 5150 ext. 240
samgray@commercialkentucky.com

BRENT DOLEN, SIOR, CCIM

Senior Associate
+1 502 589 5150 ext. 262
bdolen@commercialkentucky.com

333 E Main Street, Suite 510
Louisville, KY 40202
Main +1 502 589 5150
www.Commercialkentucky.com

©2023 Cushman & Wakefield. All rights reserved. The information contained in this communication is strictly confidential. This information has been obtained from sources believed to be reliable but has not been verified. No warranty or representation, express or implied, is made as to the condition of the property (or properties) referenced herein or as to the accuracy or completeness of the information contained herein, and same is submitted subject to errors, omissions, change of price, rental or other conditions, withdrawal without notice, and to any special listing conditions imposed by the property owner(s). Any projections, opinions or estimates are subject to uncertainty and do not signify current or future property performance.

11601 PLANTSIDE DRIVE

Louisville, KY 40299

5,700 SF



INTERIOR PHOTOS



SAM GRAY
Senior Associate
+1 502 589 5150 ext. 240
samgray@commercialkentucky.com

BRENT DOLEN, SIOR, CCIM
Senior Associate
+1 502 589 5150 ext. 262
samgray@commercialkentucky.com

333 E Main Street, Suite 510
Louisville, KY 40202
Main +1 502 589 5150
www.Commercialkentucky.com

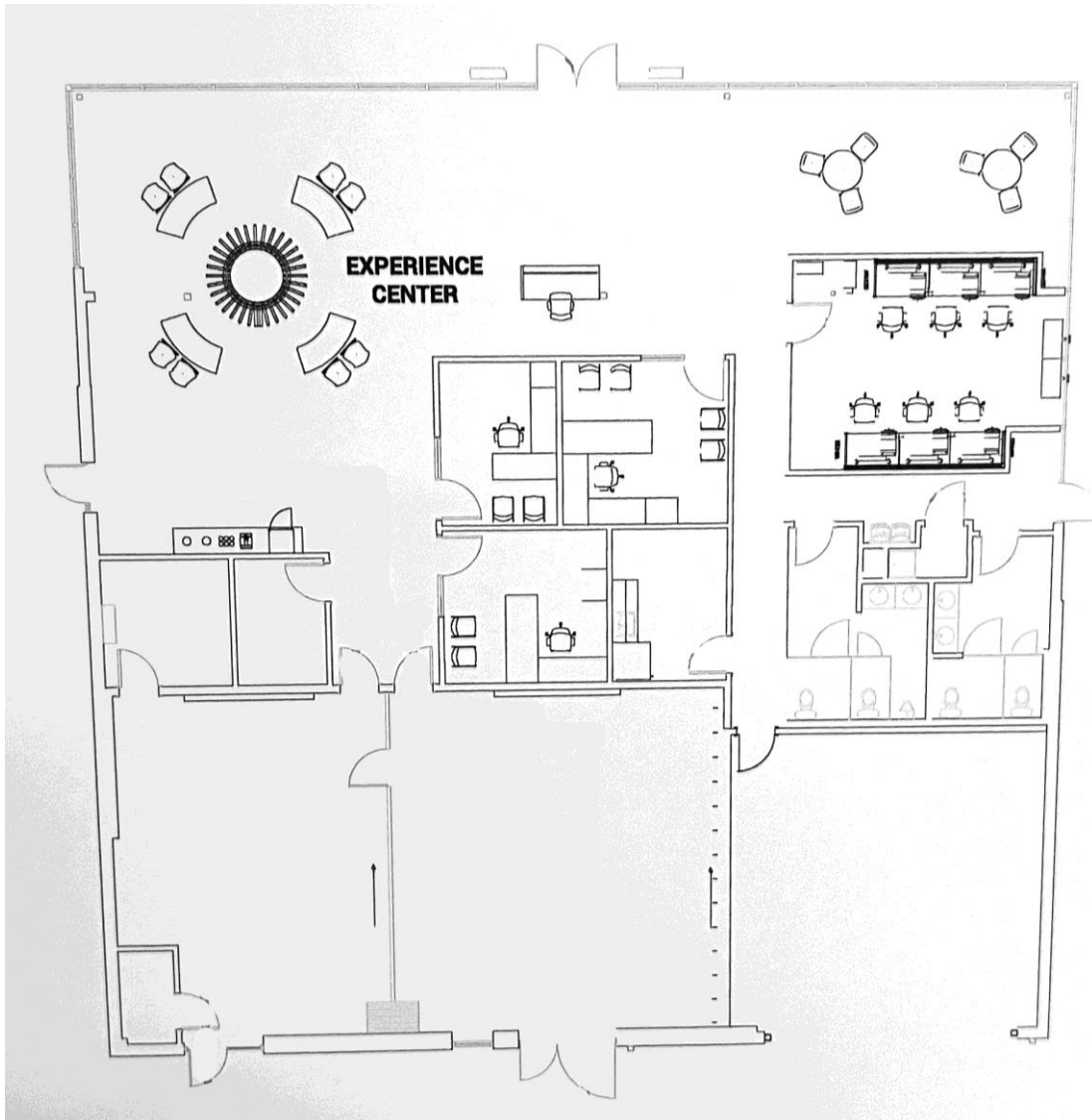
11601 PLANTSIDE DRIVE

Louisville, KY 40299

5,700 SF



FLOOR PLAN



SAM GRAY

Senior Associate
+1 502 589 5150 ext. 240
samgray@commercialkentucky.com

BRENT DOLEN, SIOR, CCIM

Senior Associate
+1 502 589 5150 ext. 262
samgray@commercialkentucky.com

333 E Main Street, Suite 510
Louisville, KY 40202
Main +1 502 589 5150
www.Commercialkentucky.com

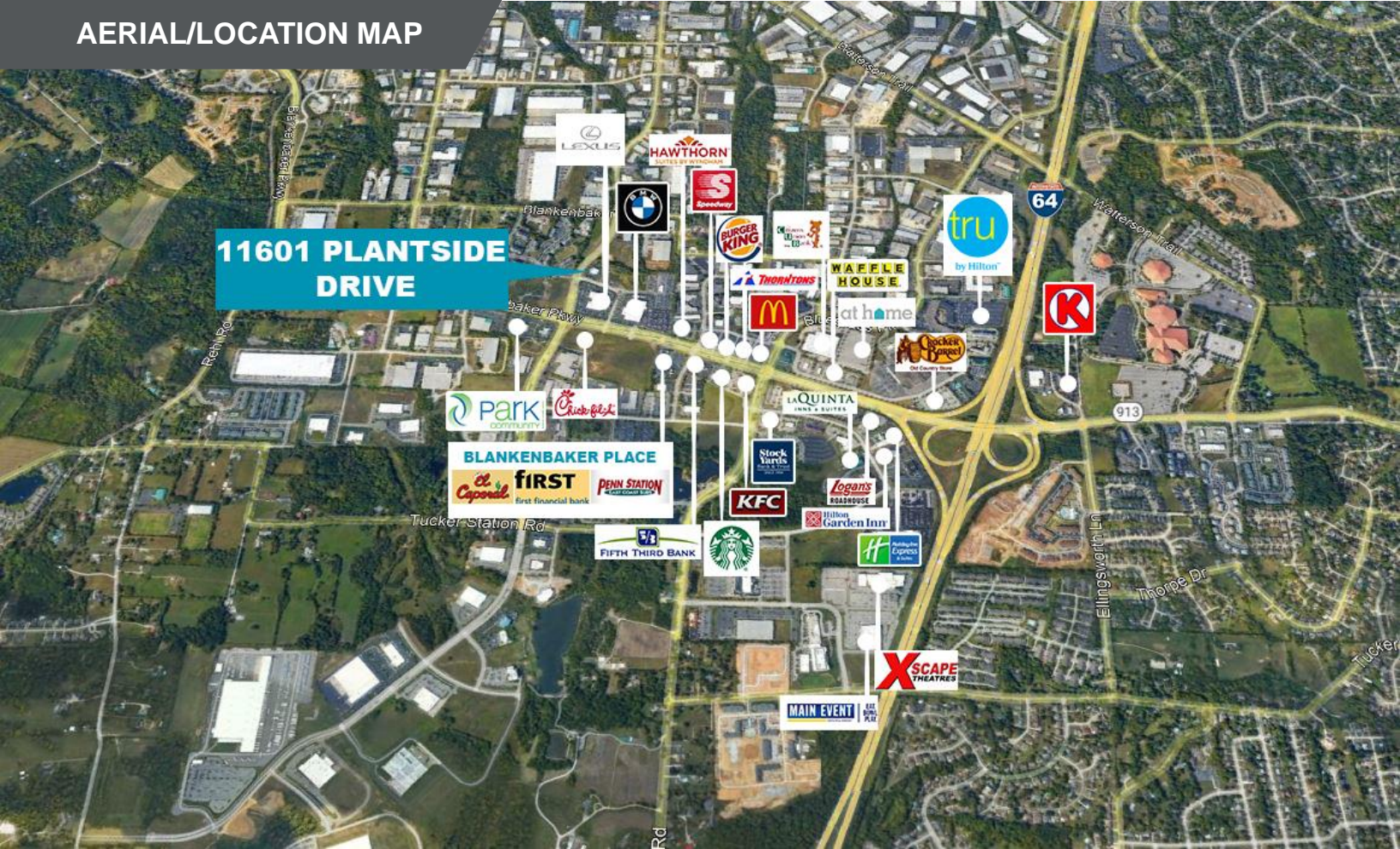
11601 PLANTSIDE DRIVE

Louisville, KY 40299

5,700 SF



AERIAL/LOCATION MAP



Demographics

	1 Mile	3 Mile	5 Mile
Population	1,285	56,474	143,556
Median HH Income	\$97,356	\$87,255	\$91,011

Traffic Counts

Plantside Drive	6,562
Blankenbaker Parkway	35,822

SAM GRAY

Senior Associate
+1 502 589 5150 ext. 240
samgray@commercialkentucky.com

BRENT DOLEN, SIOR, CCIM

Senior Associate
+1 502 589 5150 ext. 262
samgray@commercialkentucky.com

333 E Main Street, Suite 510
Louisville, KY 40202
Main +1 502 589 5150
www.Commercialkentucky.com