



603

MICHIGAN DR



PREMIER FLEX OFFICE SPACE
FOR SUBLEASE

UP TO 22,170 SF



**PLUG N' PLAY
TURNKEY**



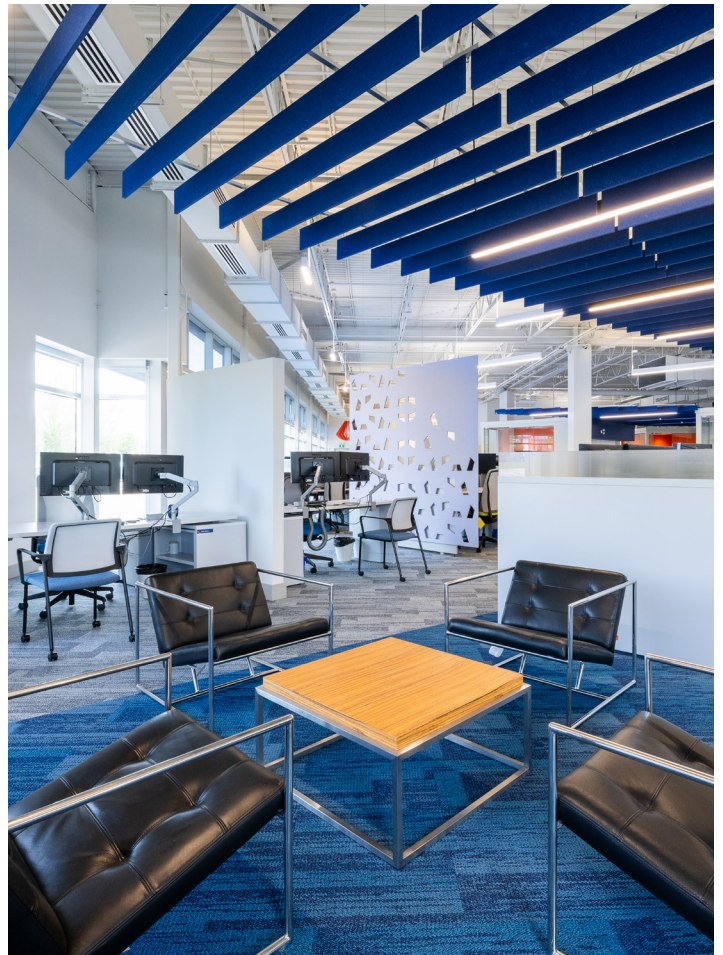
**IDEAL TERM
SUBLEASE**

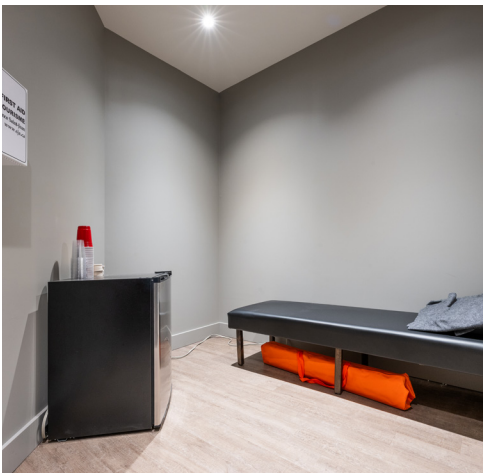
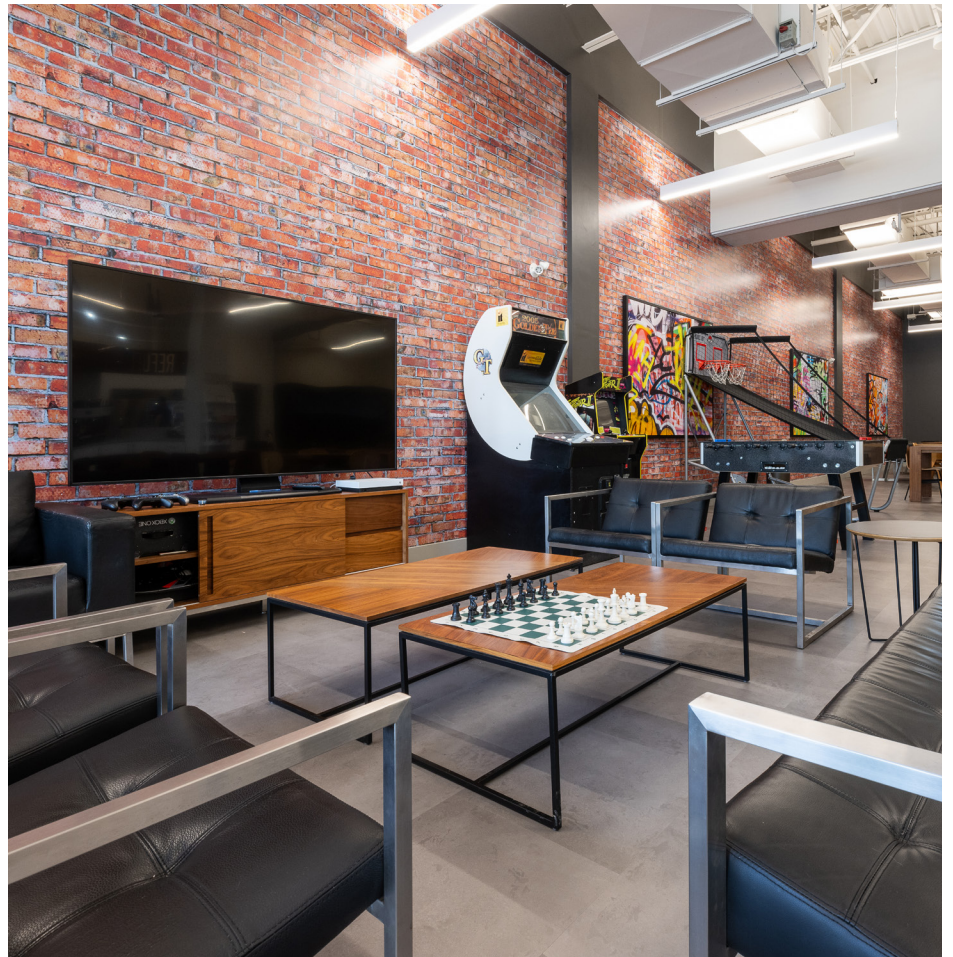


**NEW BUILD OUT
NEW FURNITURE**

Property Details

TYPE	Sublease
LOCATION	603 Michigan Drive, Oakville, ON L6L 0G2
TOTAL SF	22,170 SF
TERM	December 30, 2030
PARKING RATIO	4/1,000 SF
DATE BUILT	2015
ASKING RENT	Contact broker for more information
ADDITIONAL RENT	\$10.48 PSF
AVAILABILITY	TBD





FloorPlan



For more information, please contact:

Craig Trenholm

Sr. Vice President, Office
+1 905 501 6483
craig.trenholm@ca.cushwake.com

Fay Goveas

Vice President, Broker
+1 905 501 6482
fay.goveas@ca.cushwake.com

Ky Vladymyrenko

Client Coordinator
+1 905 501 6416
ky.vladymyrenko@cushwake.com

1 Prologis Boulevard, Suite 300
Mississauga, ON L5W 0G2 | Canada
+1 416 862 0611
cushmanwakefield.ca

