

FOR LEASE

**PRIME  
HIGHWAY 16  
EXPOSURE  
INDUSTRIAL  
LANDS**

11721 Bevington Road,  
Acheson, AB

**Max McPeak**  
Associate  
780 700 5038  
[max.mcpeak@cwedm.com](mailto:max.mcpeak@cwedm.com)

**Will Harvie**  
Associate Partner  
780 902 4278  
[will.harvie@cwedm.com](mailto:will.harvie@cwedm.com)

**Kurt Paull, SIOR**  
Partner  
780 702 4258  
[kurt.paull@cwedm.com](mailto:kurt.paull@cwedm.com)

**Nick Mytopher**  
Associate  
587 597 5475  
[nick.mytopher@cwedm.com](mailto:nick.mytopher@cwedm.com)

**YELLOWHEAD HIGHWAY**



# PROPERTY HIGHLIGHTS

- Prime exposure to Yellowhead Highway 16, a key section of the Trans-Canada Highway.
- Over 100,000 vehicles pass by daily in both directions (2022 Alberta Transportation and Economic Corridors).
- Ideal for trailer sales, mobile/RM home sales, or various industrial and showcase purposes.
- The yard is fully fenced, lit, gravelled, and ready for immediate use.

PROPERTY PHOTO





# PROPERTY DETAILS

**Municipal Address:**  
11721 Bevington Rd,  
Acheson, AB

**Zoning:**  
BI - Business Industrial District

**Market:**  
Acheson

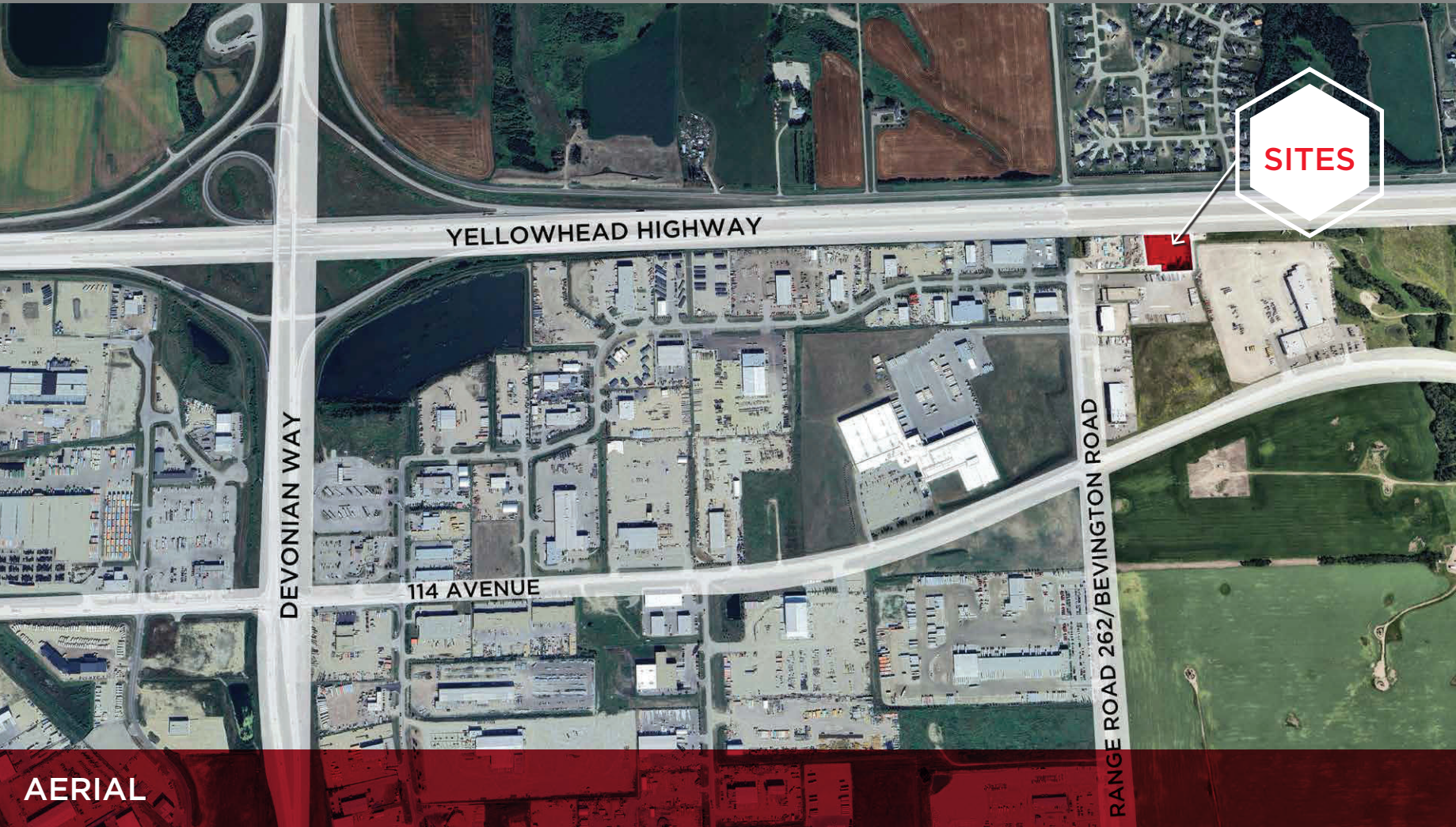
**Site Size**  
1.73 Acres

**Services:**  
Site to be Fully Serviced

**Lease Rate:**  
\$1.25/SF

**Operating Cost:**  
TBC

**Availability:**  
Negotiable



AERIAL





**CUSHMAN &  
WAKEFIELD**  
Edmonton

**Max McPeak**

Associate  
780 700 5038

[max.mcpeak@cwedm.com](mailto:max.mcpeak@cwedm.com)

**Kurt Paull, SIOR**

Partner  
780 702 4258

[kurt.paull@cwedm.com](mailto:kurt.paull@cwedm.com)

**Will Harvie**

Associate Partner  
780 902 4278

[will.harvie@cwedm.com](mailto:will.harvie@cwedm.com)

**Nick Mytopher**

Associate  
587 597 5475

[nick.mytopher@cwedm.com](mailto:nick.mytopher@cwedm.com)