

# FOR LEASE

**25345 Novi Road**

Novi, Michigan



Conner Salsberry  
Director  
+1 248 358 6114  
[conner.salsberry@cushwake.com](mailto:conner.salsberry@cushwake.com)

Tony Avendt  
Managing Director  
+1 248 358 6115  
[tony.avendt@cushwake.com](mailto:tony.avendt@cushwake.com)



**4,713 SF  
AVAILABLE**



# PROPERTY FEATURES



**4,713 SF**

TOTAL BUILDING SIZE

**1.57 ACRES**

TOTAL SITE SIZE

**1997**

YEAR BUILT

**L-1: Light Industrial**

ZONING

**22-22-276-002**

APN

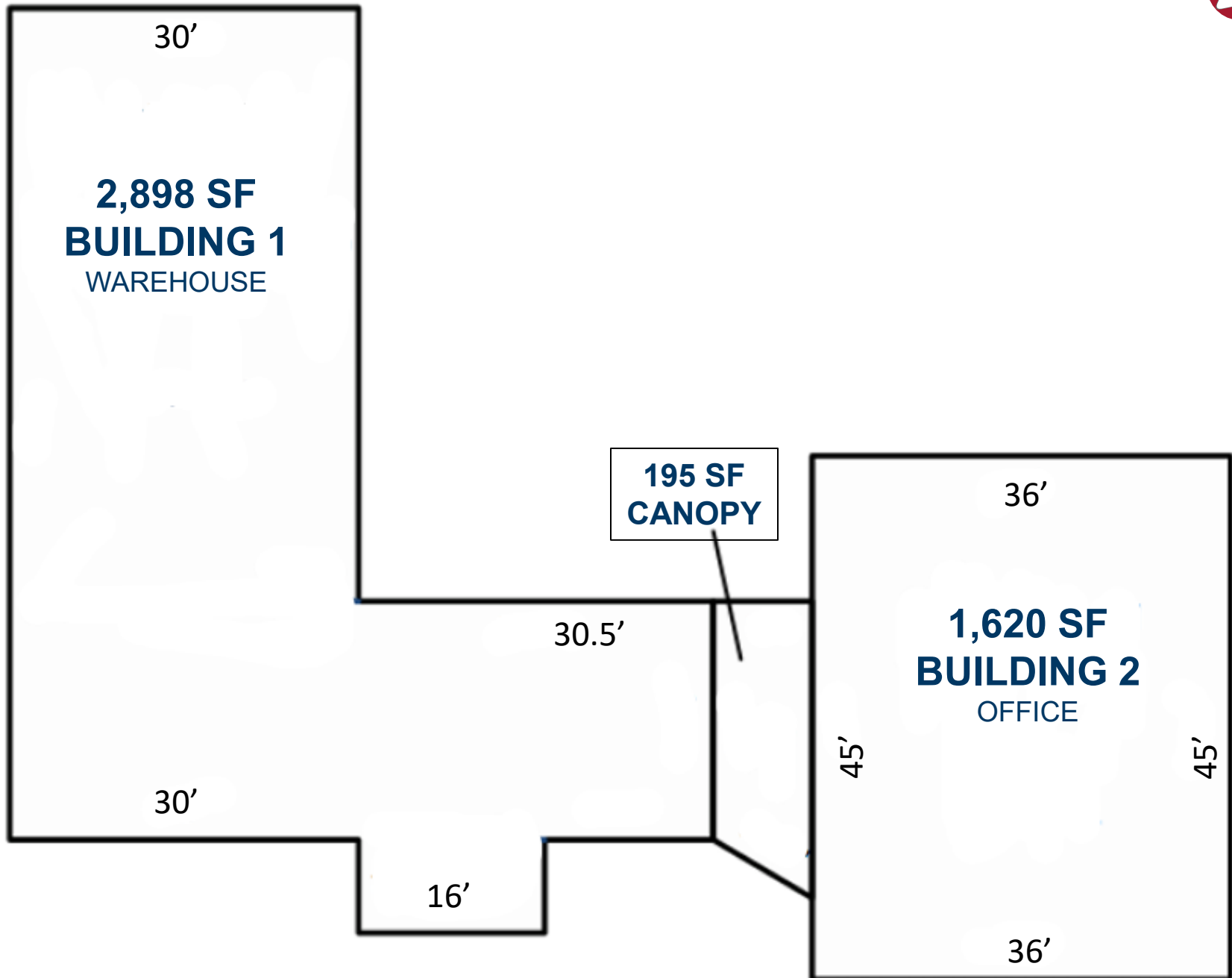
**\$9.95/SF MG**

LEASE RATE  
SALE POSSIBLE

## CURRENT AVAILABILITIES

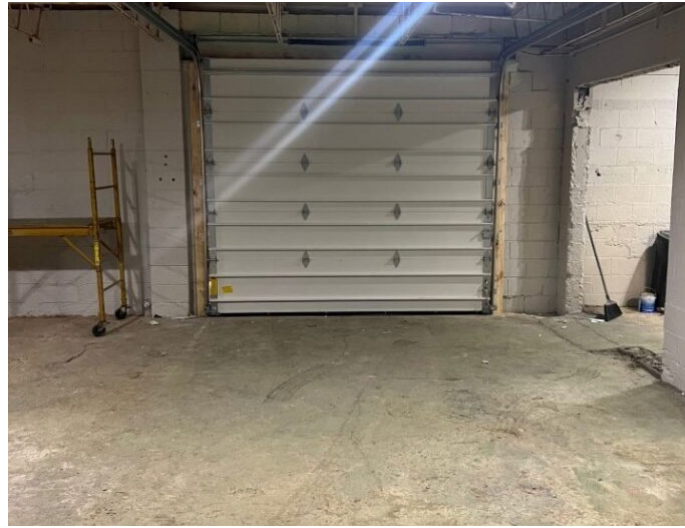
<b>1,620 SF</b> OFFICE SPACE	<b>3,093 SF</b> WAREHOUSE SPACE	<b>NA</b> DOCKS	<b>ONE (1) 8'X10'</b> DRIVE IN DOORS	<b>10'-14'</b> CEILING HEIGHT	<b>NO</b> SPRINKLERS
<b>MEMBRANE</b> ROOF	<b>YES</b> EXPANDABLE	<b>25</b> PARKING SPACES	<b>LED</b> LIGHTING	<b>800a/208v/3p</b> POWER	<b>YES</b> FENCED LOT

# PROPERTY FLOOR PLAN





# PROPERTY PHOTOGRAPHY





# PROPERTY AERIAL MAP

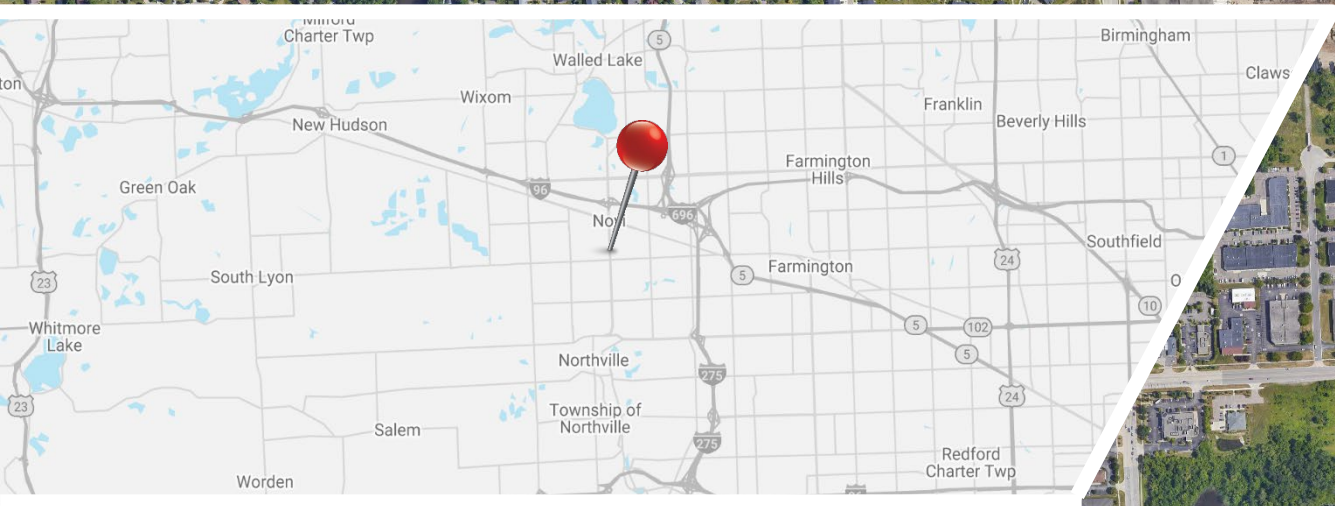


11 MILE ROAD

GRAND RIVER AVE

25345 NOVI RD

NOVI RD



W 10 MILE ROAD





**Conner Salsberry**

Director  
+1 248 358 6114  
[conner.salsberry@cushwake.com](mailto:conner.salsberry@cushwake.com)

**Tony Avendt**

Managing Director  
+1 248 358 6115  
[tony.avendt@cushwake.com](mailto:tony.avendt@cushwake.com)



©2023 Cushman & Wakefield. All rights reserved. The material in this presentation has been prepared solely for information purposes and is strictly confidential. Any disclosure, use, copying or circulation of this presentation (or the information contained within it) is strictly prohibited, unless you have obtained Cushman & Wakefield's prior written consent. The views expressed in this presentation are the views of the author and do not necessarily reflect the views of Cushman & Wakefield. Neither this presentation nor any part of it shall form the basis of, or be relied upon in connection with any offer, or act as an inducement to enter into any contract or commitment whatsoever. NO REPRESENTATION OR WARRANTY IS GIVEN, EXPRESS OR IMPLIED, AS TO THE ACCURACY OF THE INFORMATION CONTAINED WITHIN THIS PRESENTATION, AND CUSHMAN & WAKEFIELD IS UNDER NO OBLIGATION TO SUBSEQUENTLY CORRECT IT IN THE EVENT OF ERRORS.