

FOR LEASE

32788 Five Mile Road

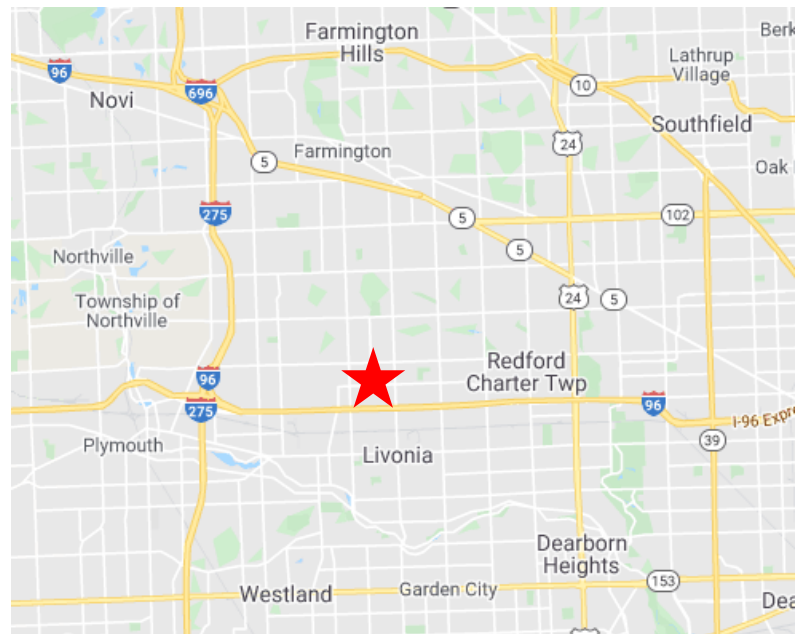
Livonia, Michigan 48154

4,041 SF



Flexible Layout for a Law Firm or Medical Practice

- 4,041 SF building available
- Renovations include a new parking lot, landscaping and interior finishes
- Divisible to 1,200 +/- SF
- Renovations completed in December 2020
- Great signage and visibility
- Across street from City Hall, civic center, library, and courthouse
- Perfect for law firm, medical office, insurance, or accounting firm
- 20+/- car parking



Tony Avendt

Managing Director
+1 248 358 6115
tony.avendt@cushwake.com

Conner Salsberry

Senior Associate
+1 248 358 6114
conner.salsberry@cushwake.com



**CUSHMAN &
WAKEFIELD**

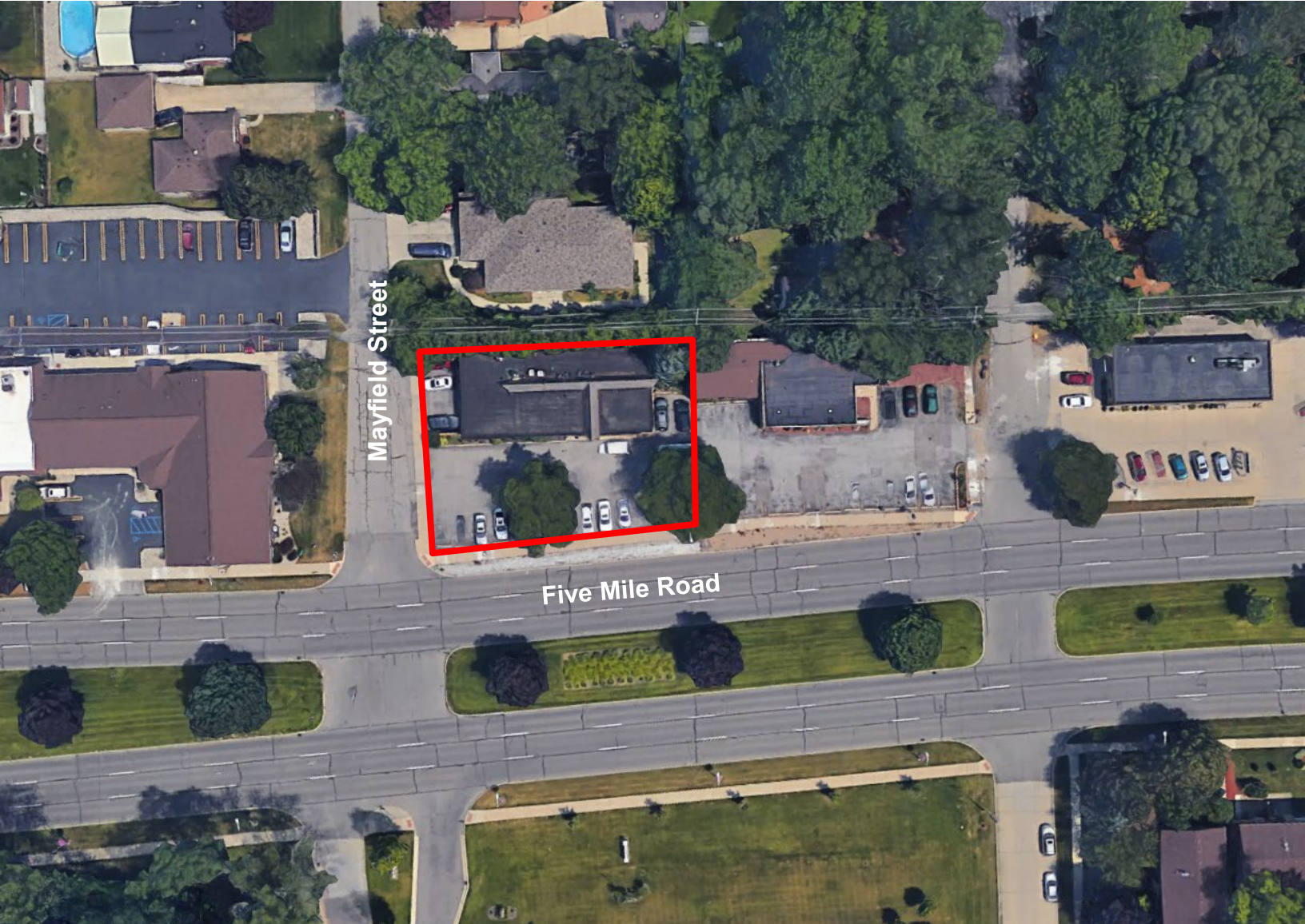
cushmanwakefield.com

FOR LEASE

32788 Five Mile Road

Livonia, Michigan 48154

4,041 SF



**CUSHMAN &
WAKEFIELD**

cushmanwakefield.com

FOR LEASE

32788 Five Mile Road

Livonia, Michigan 48154

4,041 SF



GENERAL INFORMATION

| | |
|---------------------|---|
| Address | 32788 Five Mile Road Livonia, MI 48154 |
| Total Building Area | 4,041 SF |
| Divisible To | 1,200 SF |
| Primary Use | Office |
| Year Renovated | 2020 |
| Year Built | 1973 |
| Stories | 1 |

DEMOGRAPHICS

| | Population | Average Household Income | Daytime Population |
|---------|------------|--------------------------|--------------------|
| 1 Mile | 9,410 | \$104,121 | 10,455 |
| 3 Miles | 75,295 | \$96,973 | 97,279 |
| 5 Miles | 252,514 | \$81,675 | 262,849 |

SITE DETAILS

| | |
|------------------------|---|
| Total Land Area | 0.33 Acres |
| Zoning | CI |
| Parcel ID | 46-059-01-0117-001 |
| Parking | 20 surface spaces |
| Frontage | +/- |
| Major Crossroads | 5 Mile and Farmington Road |
| Traffic Count | 30,000 cars per day |
| Neighboring Businesses | Kroger Costco Menards Walmart Secretary of State Tim Hortons Bates Hamburgers |

27777 Franklin Road
Suite 1050
Southfield, Michigan 48034
Main +1 248 358 6100
cushmanwakefield.com

PRICING

| | |
|----------------|----------------|
| Rental Rate | \$15.95/SF/YR |
| Lease Type | Modified Gross |
| Est OpEx Total | NA |

LISTING AGENTS

Tony Avendt

Managing Director
+1 248 358 6115
tony.avendt@cushwake.com

Conner Salsberry

Senior Associate
+1 248 358 6114
conner.salsberry@cushwake.com



**CUSHMAN &
WAKEFIELD**

cushmanwakefield.com