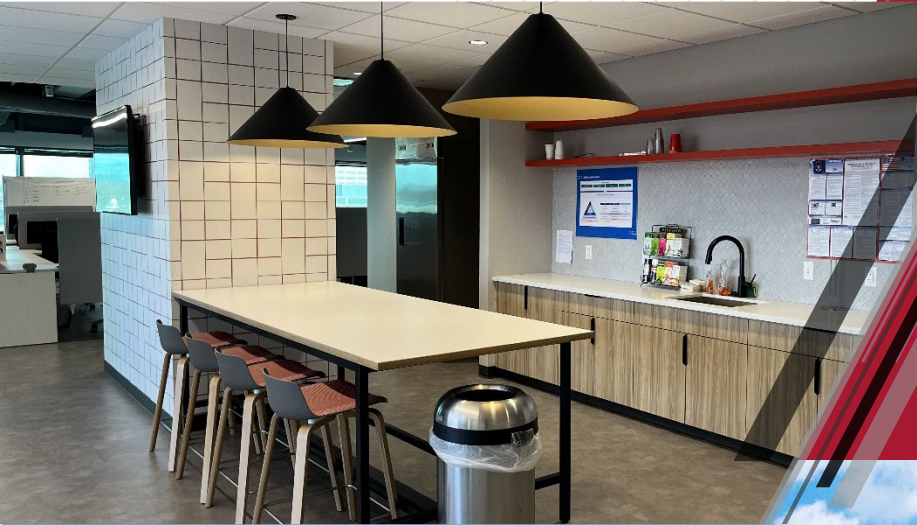




*FOR SUBLEASE*

# SOUTHFIELD TOWN CENTER

4000 TOWN CENTER  
SOUTHFIELD, MI 48034



*TOTAL  
SQUARE FOOTAGE:*

**81,567 SF**

*FLOORS:*

*2<sup>nd</sup>*

*3<sup>rd</sup>*

*5<sup>th</sup>*

*6<sup>th</sup>*

*8<sup>th</sup>*







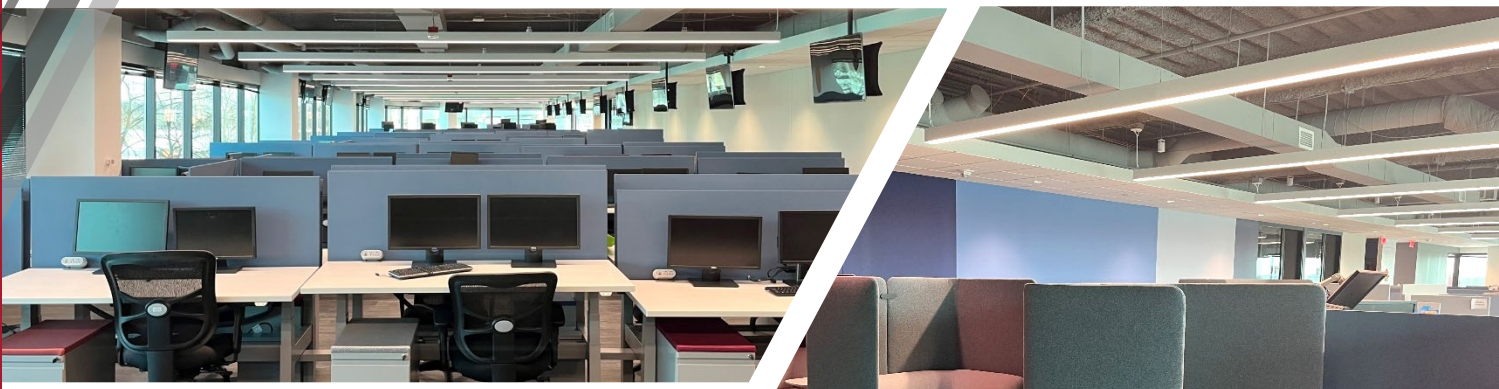
## *Southfield's Premiere Office Development*

### Building Highlights

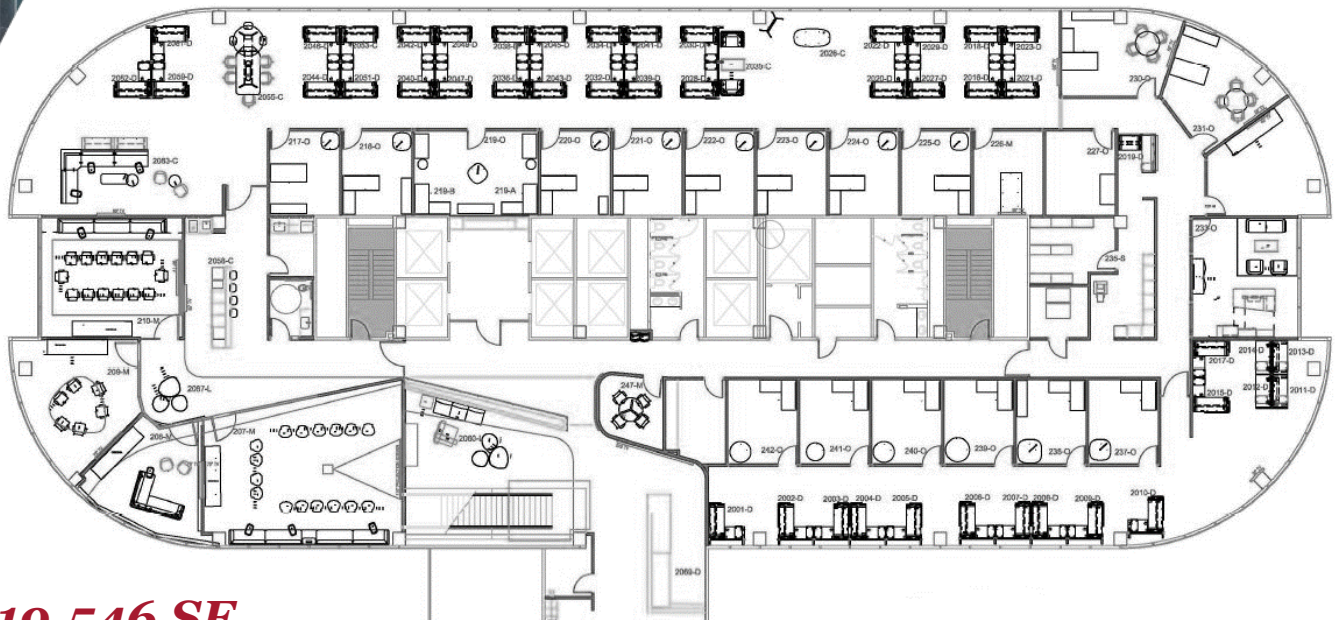
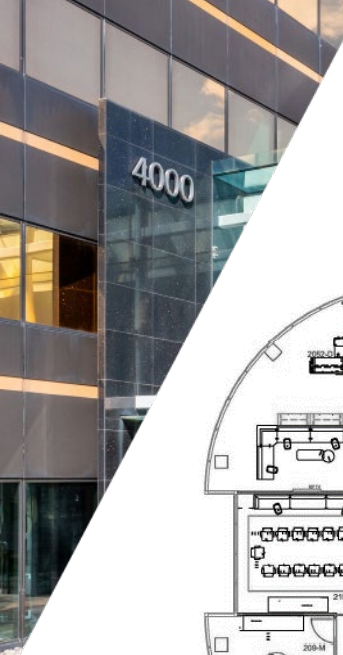
- On-site building parking garage with pedestrian bridge
- Beautiful two-story atrium
- Fitness center and full-size basketball court
- Several on-site food and beverage options
- Westin Hotel attached to building

### Sublease Highlights

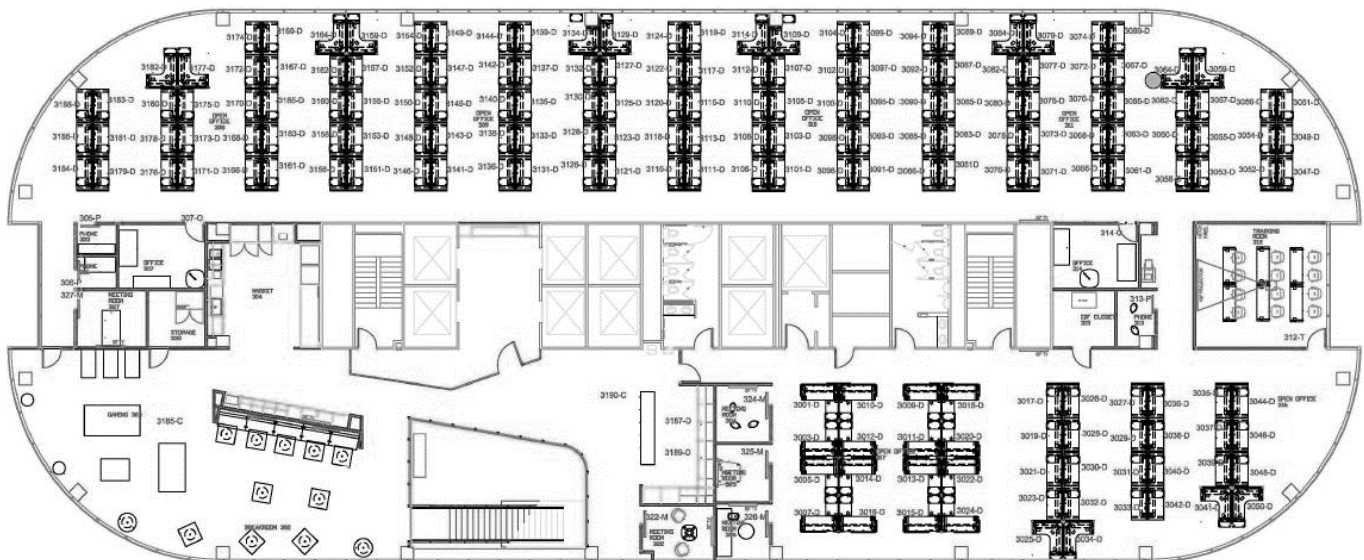
- Sublease Expiration Date: Contact Broker
- Sublease Rate: Contact Broker
- Furniture, fixtures, and equipment negotiable
- 24-hour secured access







**19,546 SF**  
**Second Floor**

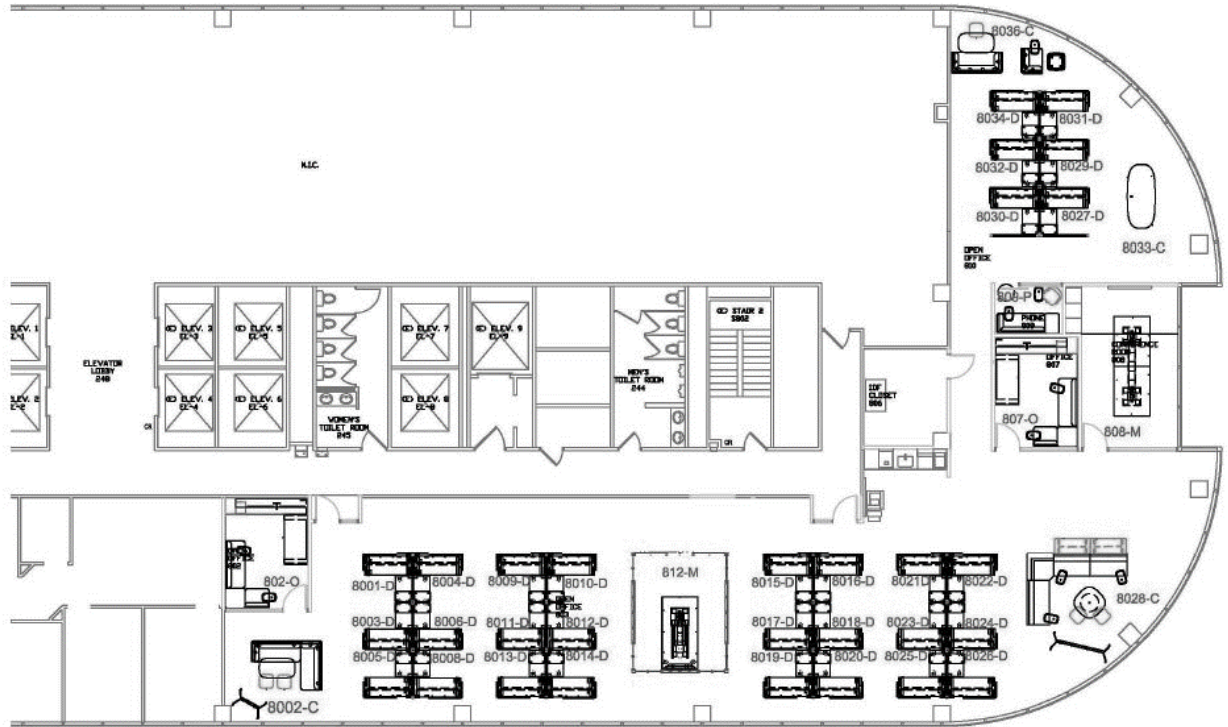


**18,567 SF**  
**Third Floor**









**6,020 SF**  
***Eighth Floor***



# Building Aerial



On-site Lodging at the Westin Hotel



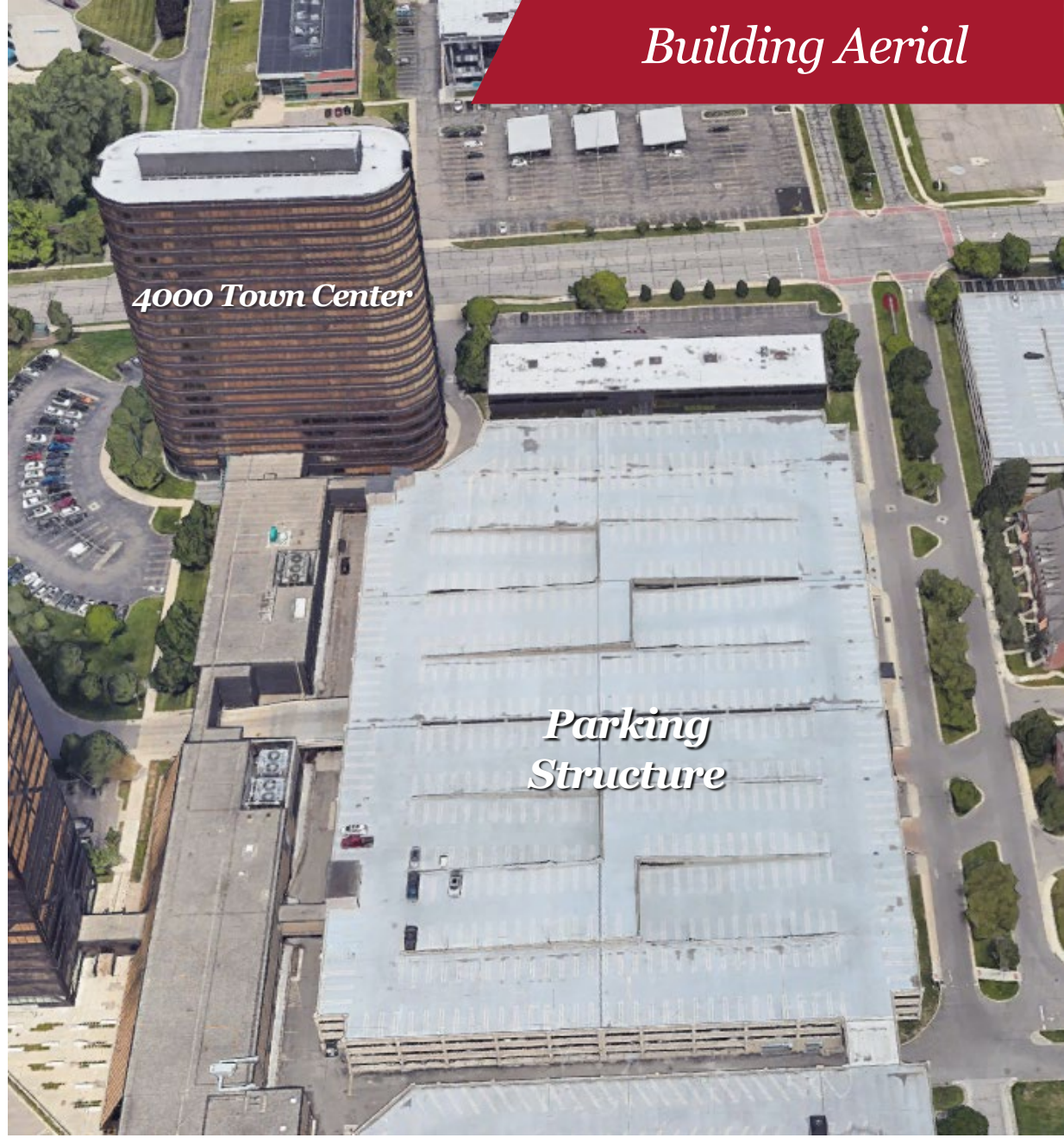
On-site Parking Garage



Multiple Dining Options On-site

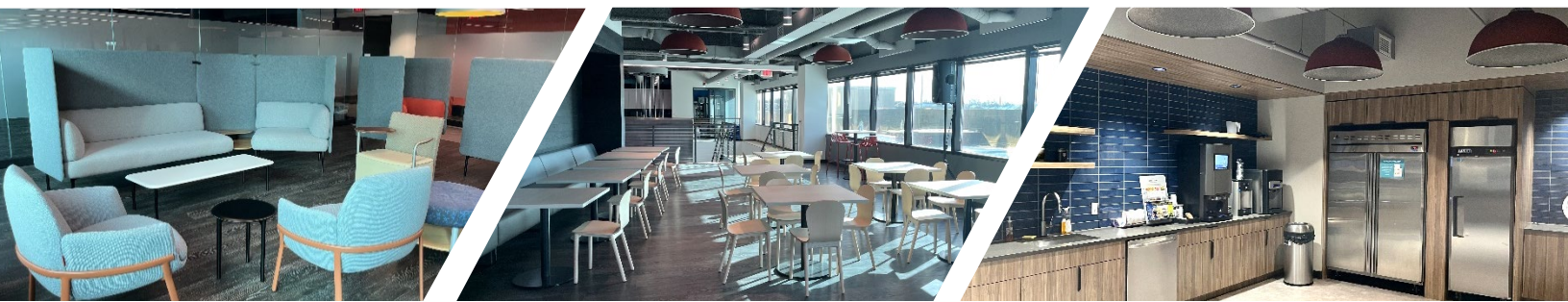


On-site Fitness Center and Leisure Options



4000 Town Center

Parking Structure



For more information, please contact:

**BRIAN PIERGENTILI**

Executive Director

+1 248 358 6103

[brian.piergentili@cushwake.com](mailto:brian.piergentili@cushwake.com)

**JASON COTTON**

Director

+1 248 358 6106

[jason.cotton@cushwake.com](mailto:jason.cotton@cushwake.com)

**JOHN VANNOORD**

Senior Associate

+1 248 358 6106

[john.vannoord@cushwake.com](mailto:john.vannoord@cushwake.com)

**GARRETT KEAIS, SIOR**

Managing Principal

+1 248 358 6112

[garrett.keais@cushwake.com](mailto:garrett.keais@cushwake.com)

