

CREEKSIDE OAKS BROKER PROMOTION

3 DAYS in *Hawaii*

ROUNDTrip AIRFARE & ACCOMMODATIONS FOR TWO PEOPLE*

*ANY NEW LEASE AT 1740, 1750 or 1760 CREEKSIDE OAKS DRIVE

SIGNED BEFORE AUGUST 31, 2019 • MINIMUM THREE YEAR LEASE TERM • SUBJECT TO LANDLORD APPROVAL.



\$100 AMEX FOR A TOUR

• MUST BE WITH LISTING TEAM

Overview

- Approximately ±1,608-±6,527 RSF available
- On-site cafe
- On-site property management office
- On-site Common Area Conference Facility
- On-site shower facilities
- On-site bike lockers
- Outdoor seating area with water feature
- Close to many retail and service locations
- Outstanding freeway access & close proximity to Downtown Sacramento and airport
- Parking 4/1,000 SF
- Electrical vehicle charging stations available

CLASS A OFFICE SUITES FOR LEASE



CONTACT

Sean Mullen
sean.mullen@cushwake.com
(916) 288.4811
CA License# 01845406

Kevin Partington
kevin.partington@cushwake.com
(916) 288.4807
CA License# 01199010

Kris Kalmbach
kris.kalmbach@cushwake.com
(916) 288.4421
CA License# 01436668



AVAILABILITIES

ADDRESS	SUITE	RSF
1740 Creekside Oaks	130	4,384 RSF
1750 Creekside Oaks	215	1,608 RSF - Avail. Q3-19
1760 Creekside Oaks	175**	4,586 RSF - Avail. Q3-19
1760 Creekside Oaks	180**	1,941 RSF
1760 Creekside Oaks	175/180	6,527 RSF - Avail. Q3-19

**** Suites 175 & 180 can be combined for a total of ±6,527 RSF**

CONTACT

Sean Mullen
sean.mullen@cushwake.com
 (916) 288.4811
 CA License# 01845406

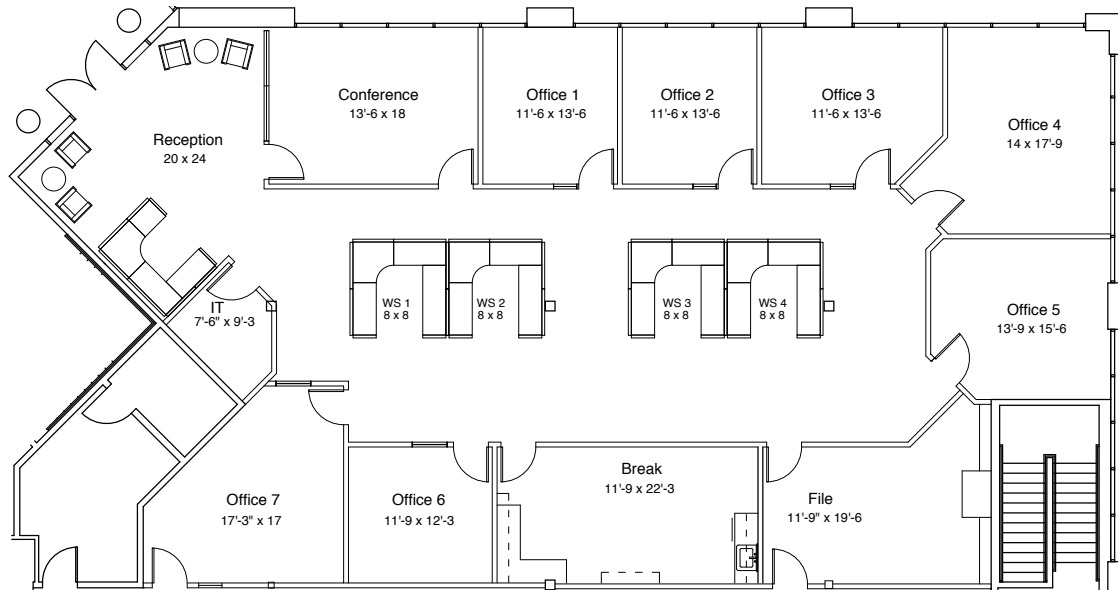
Kevin Partington
kevin.partington@cushwake.com
 (916) 288.4807
 CA License# 01199010

Kris Kalmbach
kris.kalmbach@cushwake.com
 (916) 288.4421
 CA License# 01436668

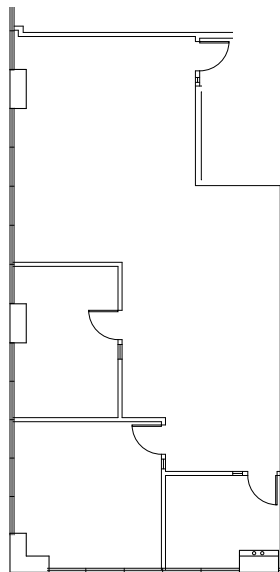
A Project By
SEAGATE
 PROPERTIES, INC.



1740 CREEKSIDE | SUITE 130 | ±4,384 RSF



1750 CREEKSIDE | SUITE 215 | ±1,608 RSF



CONTACT

Sean Mullen
sean.mullen@cushwake.com
(916) 288.4811
CA License# 01845406

Kevin Partington
kevin.partington@cushwake.com
(916) 288.4807
CA License# 01199010

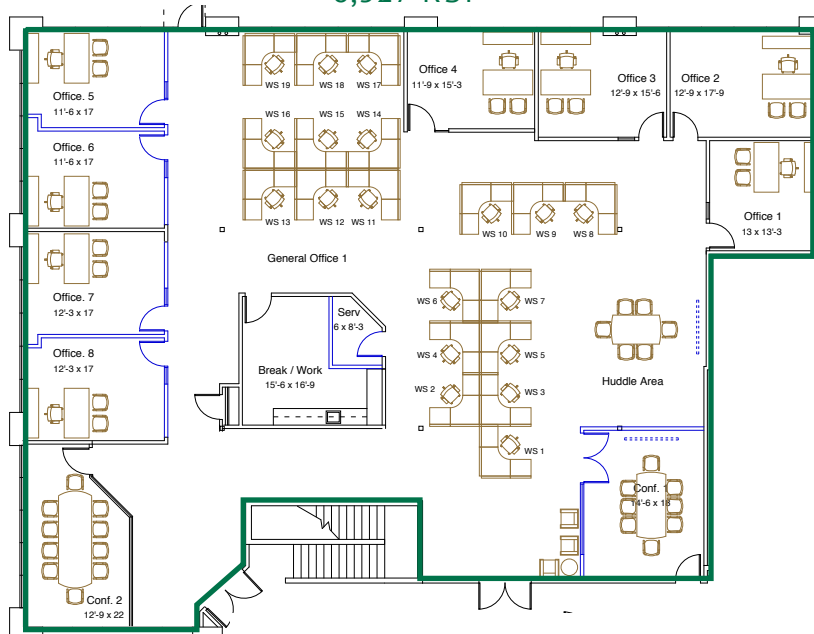
Kris Kalmbach
kris.kalmbach@cushwake.com
(916) 288.4421
CA License# 01436668

A Project By
SEAGATE
PROPERTIES, INC.



1760 CREEKSIDE | SUITE 175 & 180 | OPTION 1 ONE TENANT SCENARIO

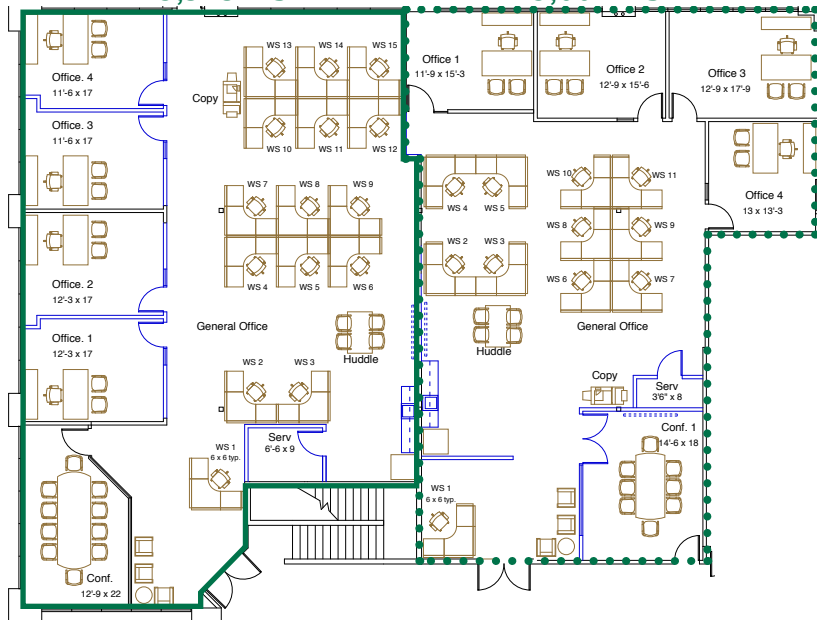
±6,527 RSF



1760 CREEKSIDE | SUITE 175 & 180 | OPTION 2 TWO TENANT SCENARIO

SUITE 175
±3,525 RSF

SUITE 180
±3,002 RSF



CONTACT

Sean Mullen
sean.mullen@cushwake.com
(916) 288.4811
CA License# 01845406

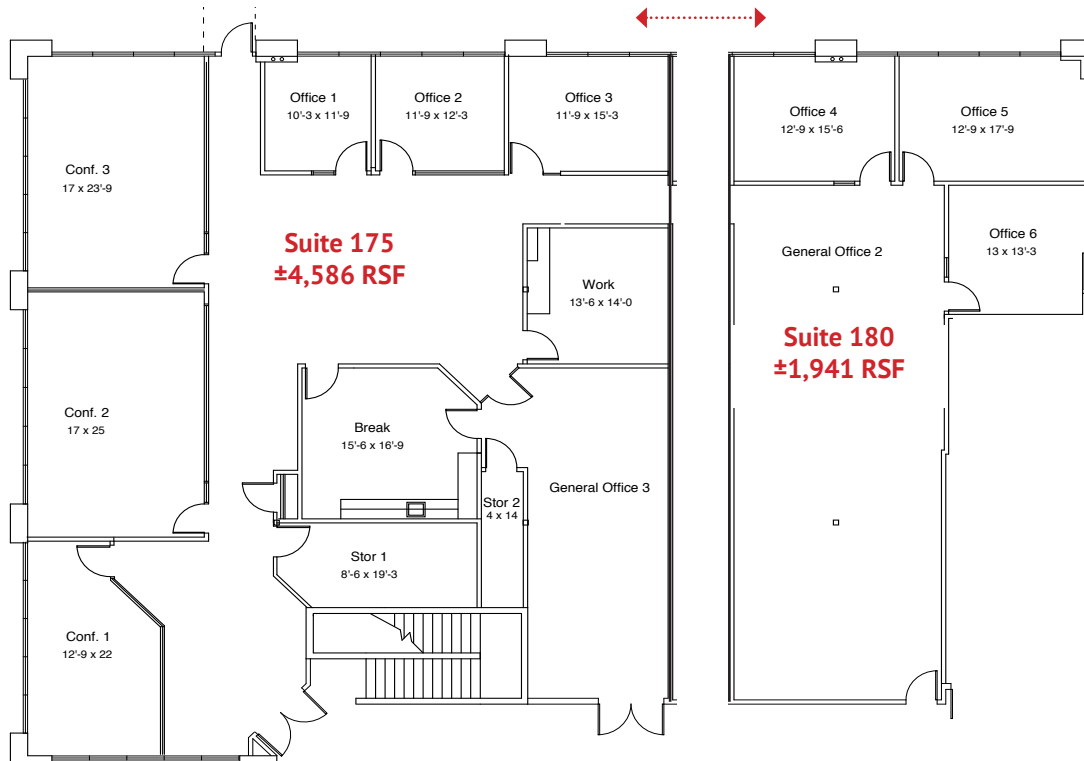
Kevin Partington
kevin.partington@cushwake.com
(916) 288.4807
CA License# 01199010

Kris Kalmbach
kris.kalmbach@cushwake.com
(916) 288.4421
CA License# 01436668

A Project By
SEAGATE
PROPERTIES, INC.



1760 CREEKSIDE | SUITE 175 & 180 | ±6,527 RSF



CONTACT

Sean Mullen
sean.mullen@cushwake.com
(916) 288.4811
CA License# 01845406

Kevin Partington
kevin.partington@cushwake.com
(916) 288.4807
CA License# 01199010

Kris Kalmbach
kris.kalmbach@cushwake.com
(916) 288.4421
CA License# 01436668

A Project By
SEAGATE
PROPERTIES, INC.





CONTACT

Sean Mullen
sean.mullen@cushwake.com
(916) 288.4811
CA License# 01845406

Kevin Partington
kevin.partington@cushwake.com
(916) 288.4807
CA License# 01199010

Kris Kalmbach
kris.kalmbach@cushwake.com
(916) 288.4421
CA License# 01436668

A Project By
SEAGATE
PROPERTIES, INC.

CUSHMAN & WAKEFIELD