

FOOD PRODUCTION FACILITY AVAILABLE FOR SUBLEASE

2090 MARINA AVENUE, PETALUMA CA



Trevor Buck
Executive Managing Director
+1 415 451 2436
trevor.buck@cushwake.com
Lic #: 01255462

Steven Leonard
Managing Director
+1 415 722 1080
steven.leonard@cushwake.com
Lic #: 00909604

Brian Foster
Executive Director
+1 415 451 2437
brian.foster@cushwake.com
Lic #: 01393059



BUILDING OVERVIEW

2090 Marina Avenue in southern Petaluma is a fully built-out operational food production plant. Recently completed improvements, floor drains, back-up power, distributed utilities, test kitchen, locker room, break areas inside and out, office space, temperature controlled freezer/cooler, and dry warehouse storage.

The building is flexible and can accommodate office in smaller or larger formats, dock and grade loading and parking for a full office occupancy user. The building is located one block from US 101 and a short distance from Highway 37. There are multiple amenities in the area including hotels, food and business services.



Building Size \pm 72,612 SF

Available Space \pm 48,157 SF

Power 1,600 amps, 277/480 - 3 phase

Sublease Term Through 8/31/2028

Grade Level Doors 2

Dock High Doors 1

Parking 115 spaces (2.4/1000)



Fully Sprinklered



Large Breakroom Kitchen Space



Male & Female Locker Rooms



Back-up Power Generator

PRODUCTION HIGHLIGHTS



- Floor drains



- Epoxy floors



- Hot water boiler system



- Freezer/cooler space



- Nitrogen sensor system



- Sanitary soap system



- Waste water collection system



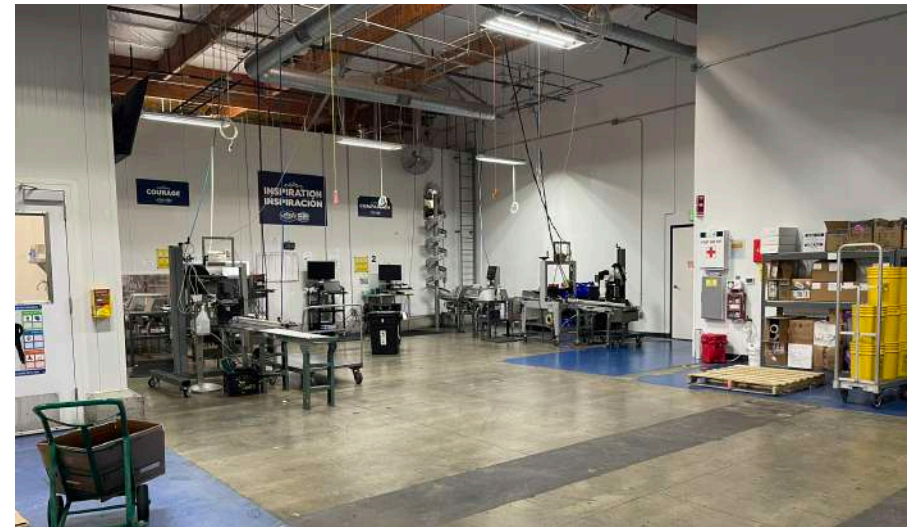
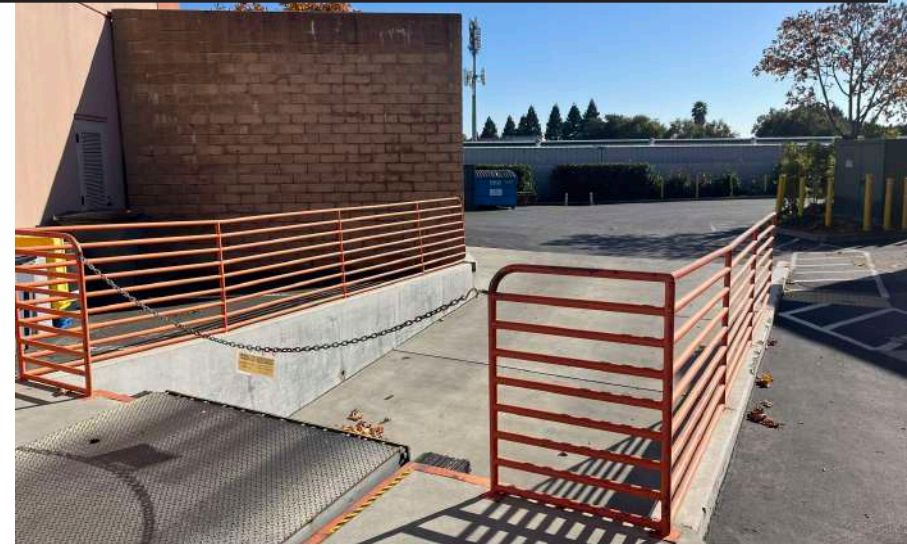
- R&D test kitchen



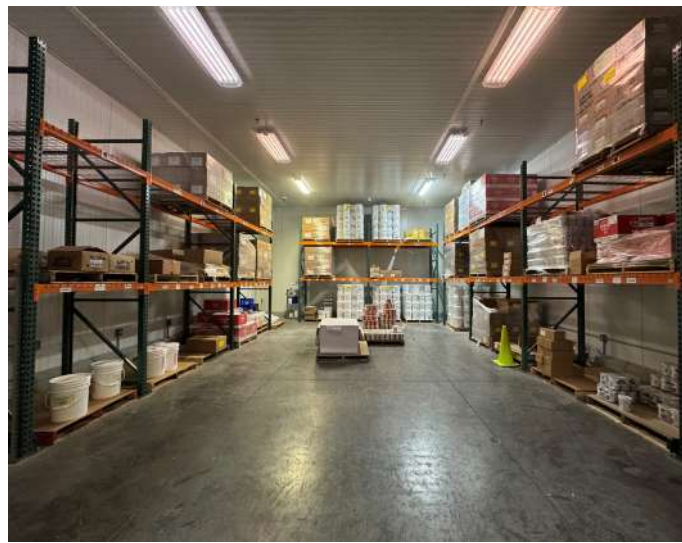
- Dry goods storage warehouse



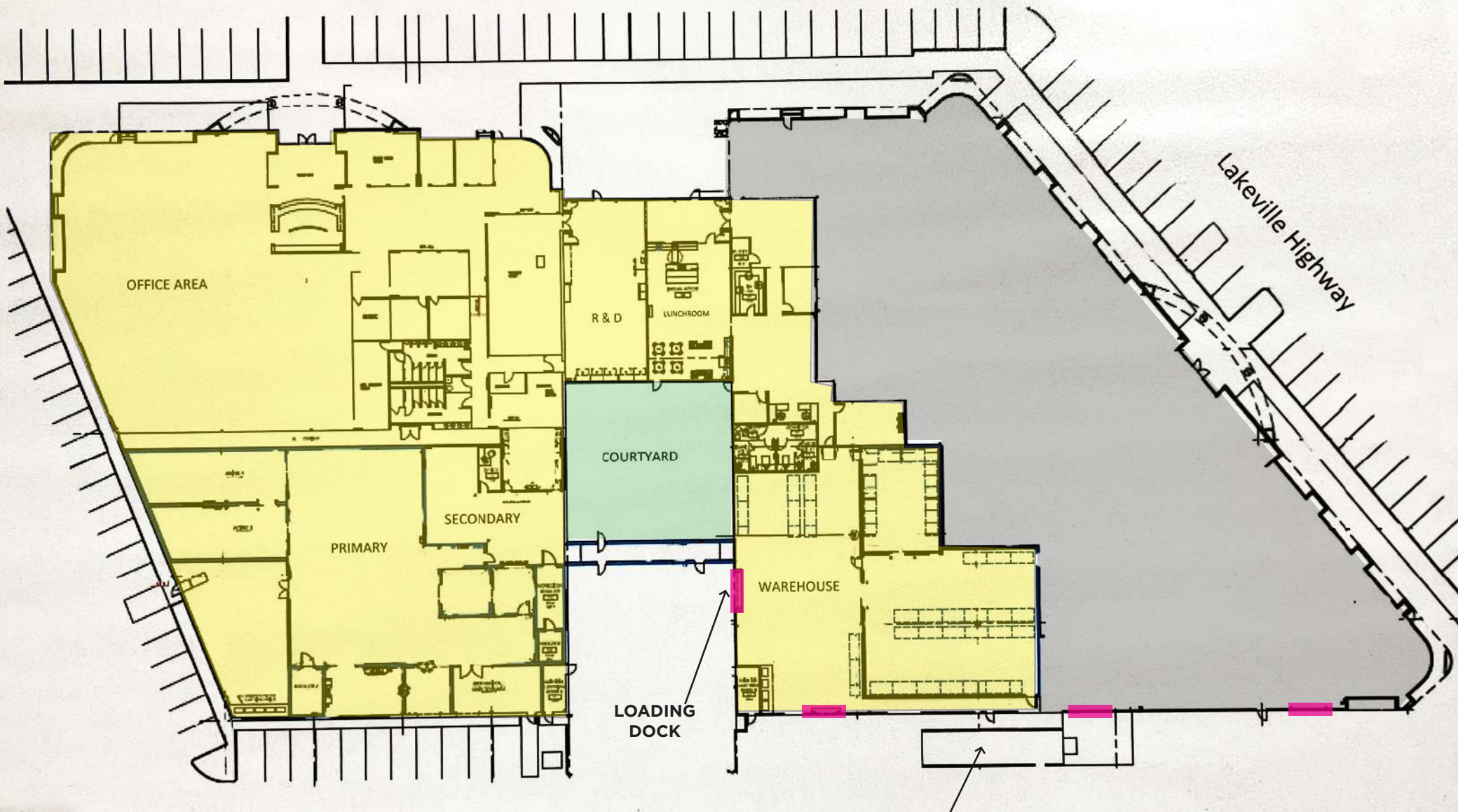
- Full production space



PRODUCTION SPACE



FLOOR PLAN



LOADING DOCK

LOADING DOCK

- PREMISES
- GRADE LOADING
- EXTERIOR COURTYARD

FOOD/BEVERAGE

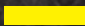


1. El Pollo Loco
2. Starbucks
3. McDonalds
4. Round Table
5. Peet's Coffee
6. Noah's NY Bagels
7. Panda Express
8. Chipotle
9. Java Hut
10. Petaluma Brunch Station
11. Bistro 21
12. Starbucks
13. Mario & John's
14. Ayawaska Petaluma
15. Wild Goat Bistro
16. Sol Food
17. Sax's Joint
18. Juice House Co
19. Sonoma Portworks
20. Buckhorn
21. Papa Murphy's
22. In N Out
23. Marina Bean
24. 7/11

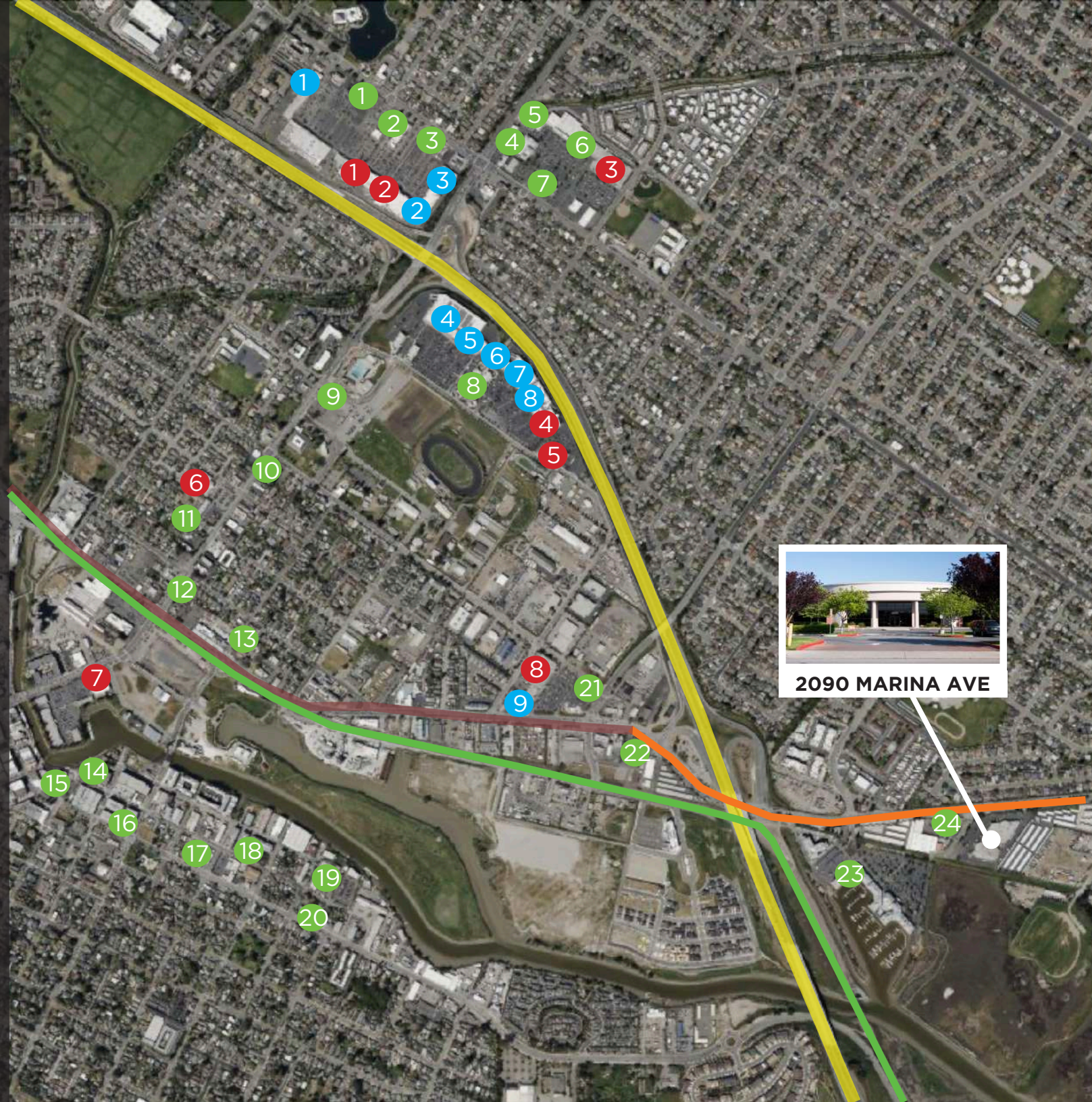
GROCERY/DRUG STORES

1. Trader Joes
2. Raley's
3. Safeway
4. Sprouts
5. BevMo!
6. Whole Foods
7. Grocery Outlet
8. Lucky

RETAIL

1. CVS
2. Goodwill
3. Big 5
4. Target
5. Ulta Beauty
6. PetSmart
7. HomeGoods
8. Dick's Sporting Goods
9. The UPS Store

-  HIGHWAY 101
-  LAKEVILLE HWY
-  SMART TRAIN



2090 MARINA AVE