

STONE POINT CORPORATE CENTER
SP

FOR LEASE
**1478 Stone Point Drive
Roseville, CA**



 **CUSHMAN &
WAKEFIELD**

Property Highlights

Stone Point Corporate Center is a Class A office and retail development in Sacramento's most dynamic submarket—Roseville, CA. Stone Point is the only five-story office building in Roseville and it provides easy access to I-80 and Highway 65. The mixed-use development includes 40,000 sf of high-end retail fronting Eureka Road—offering numerous options within walking distance, including some of the area's finest restaurants, shops and entertainment venues.

BUILDING AMENITIES

Two common conference rooms, fitness center with showers and lockers, ground floor food with a coffee kiosk

SIGNAGE

Building and monument signage available

PARKING

Four spaces per 1,000 sf leased, optional reserved and unreserved subterranean parking available

ACCESS

Easy access to the I-80 Freeway

VIEWS

Spectacular views of the Sierras and Sacramento Valley

SECURITY

On-site 24-hour security and security cameras





ADVENTIST HEALTH
HEADQUARTERS

STONE POINT
CORPORATE CENTER

FUTURE OFFICE
DEVELOPMENT

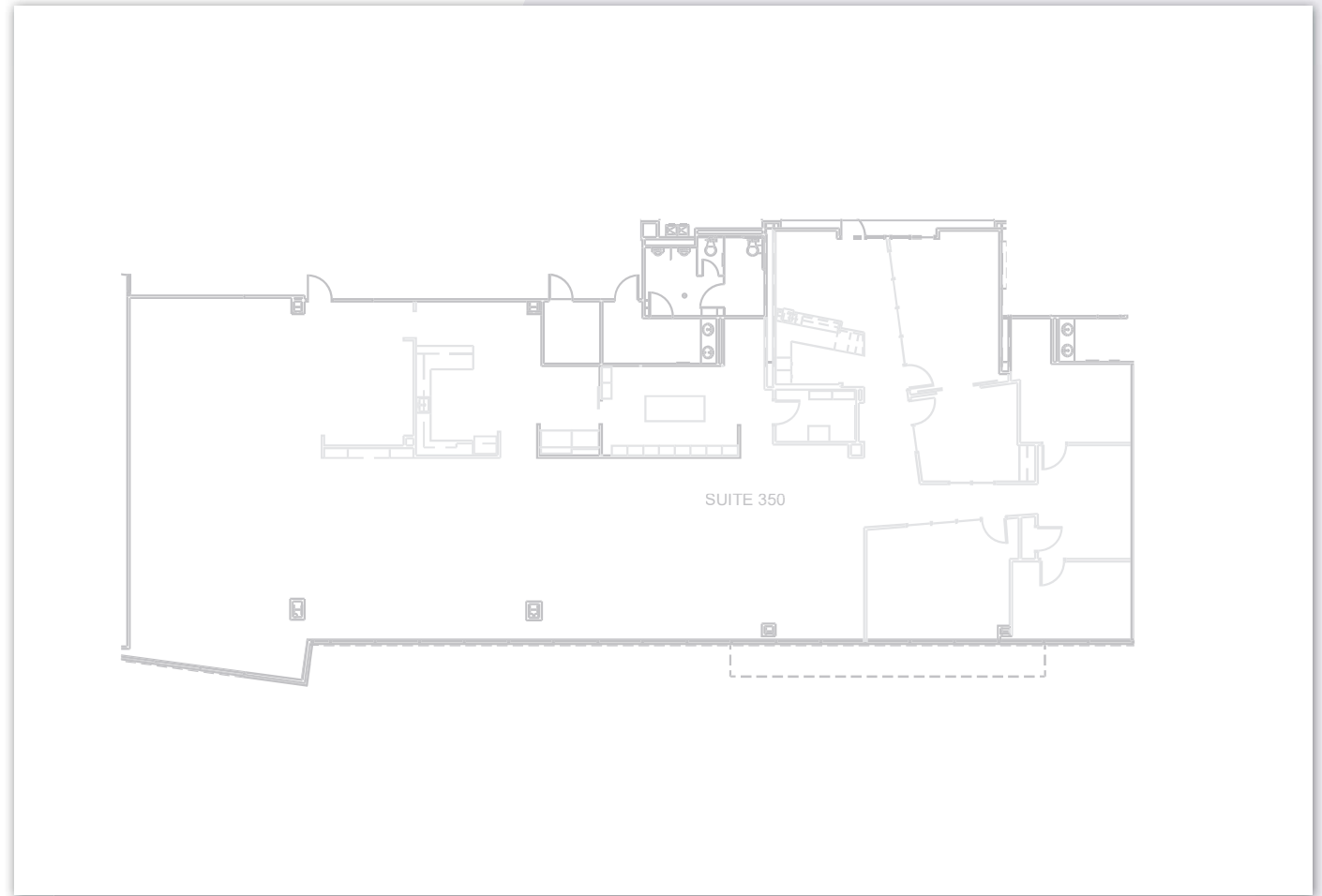
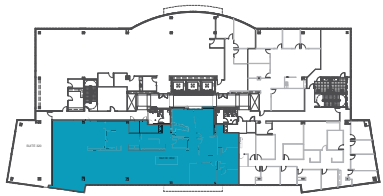
FUTURE OFFICE
DEVELOPMENT

RETAIL

- Paul Martin's
- American Grill
- Blue Nami
- Q1227
- Costa Vida
- Bloom Coffee and Tea
- My Thai Table
- Trademark Pizza

Floor 3

SUITE 350 | ±6,472



Floor 5

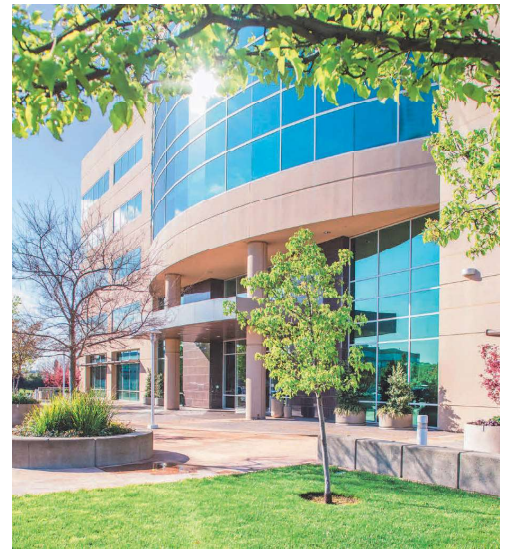
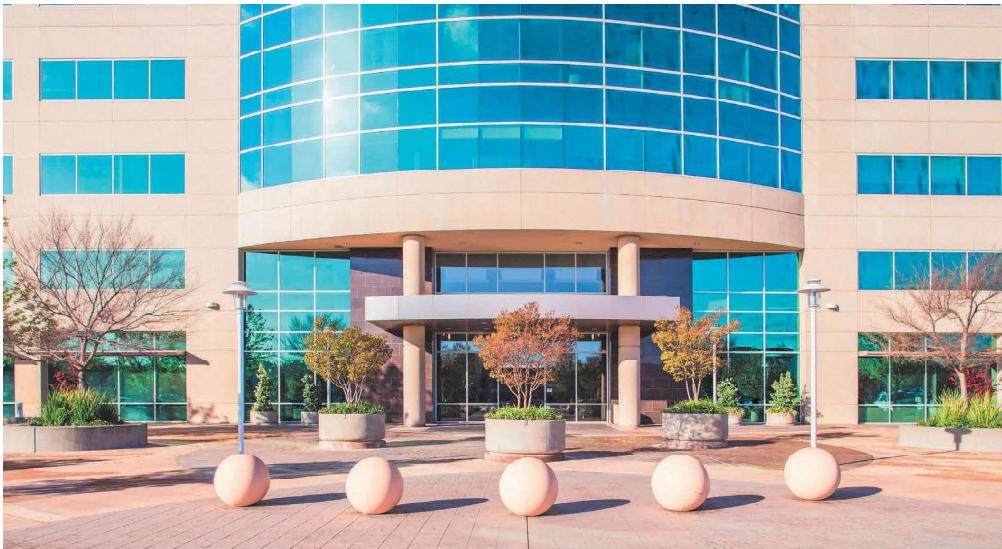
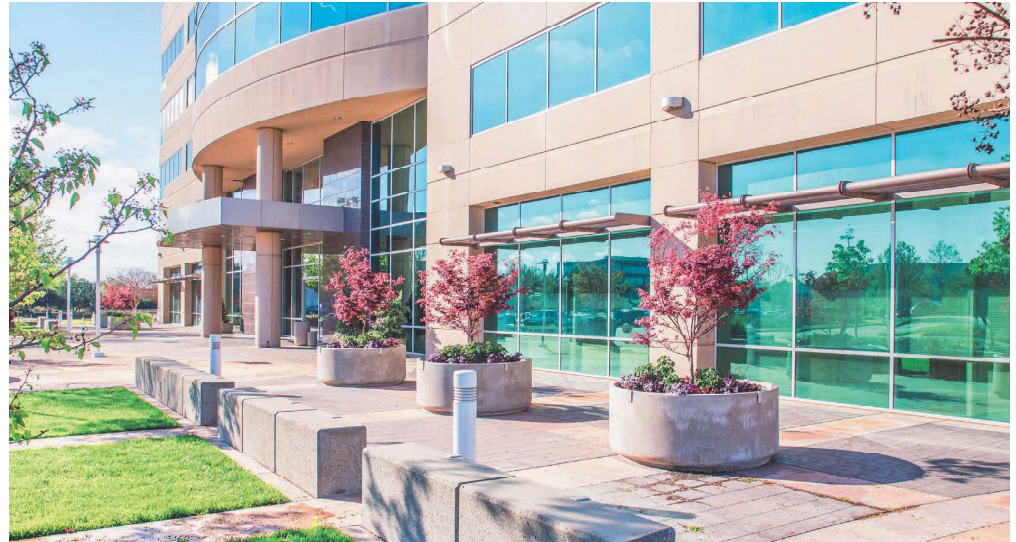
SUITE 530 | ±4,120

Sample space plan—
currently in warm shell condition

[VIEW VIRTUAL
TOUR HERE](#)

Hover over image to enlarge.





THE FOUNTAINS

Westfield
Galleria at Roseville

Hilton Garden Inn

Residence Inn **COURTYARD**
Marriott **Marriott**

Sutter Health

IN-N-OUT
BURGER

Holiday Inn Express

STARBUCKS
COFFEE

LIFETIME
FITNESS



Paul Martin's
American Grill

BLOOM
COFFEE & TEA

Adventist Health
HEADQUARTERS

STONE POINT
CORPORATE CENTER

ROSEVILLE
Auto Mall
rosevilleautomall.com

Ruen
Thai Restaurant

SIENNA
MODERN AMERICAN

FAT'S
FAMILY OF RESTAURANTS
FINE ASIAN & AUSTRALIAN DINING

California
BACKYARD

CENTURY

MIKUNI
japanese restaurant & sushi bar

Douglas Blvd.

Rocky Ridge

Eureka Blvd.



Contact Us

CHRIS SCHWARZE

Executive Director
+1 916 288 4803
chris.schwarze@cushwake.com
CA License #01291261

CHAD COOK, SIOR, CCIM

Senior Director
+1 916 764 1181
chad.cook@cushwake.com
CA License #01711687

KEVIN PARTINGTON

Executive Managing Director
+1 916 288 4807
kevin.partington@cushwake.com
CA License #01199010

400 Capitol Mall, Suite 1800
Sacramento, CA 95814
+1 916 288 4800



SP

STONE POINT CORPORATE CENTER

[View Site Specific COVID-19 Prevention Plan](#)

©2020 Cushman & Wakefield. All rights reserved. The information contained in this communication is strictly confidential. This information has been obtained from sources believed to be reliable but has not been verified. No warranty or representation, express or implied, is made as to the condition of the property (or properties) referenced herein or as to the accuracy or completeness of the information contained herein, and same is submitted subject to errors, omissions, change of price, rental or other conditions, withdrawal without notice, and to any special listing conditions imposed by the property owner(s). Any projections, opinions or estimates are subject to uncertainty and do not signify current or future property performance.

