



FOR SUBLEASE

1478 Stone Point Drive – Suite 380

Roseville, CA

SUBLEASE | ±2,715 SF



**CHRIS SCHWARZE**

Executive Director  
+1 916 288 4803  
chris.schwarze@cushwake.com  
LIC #01291261

**CHAD COOK, MCR, SIOR, CCIM**

Senior Director  
+1 916 329 1562  
chad.cook@cushwake.com  
LIC #01711687

400 Capitol Mall Suite 1800 | Sacramento, CA 95618  
Main 1 916 288 4800 | Fax 1 916 446 0024  
cushmanwakefield.com



## SUBLEASE OPPORTUNITY!

**Asking Rate: Contact Agent**

**Master Lease Expiration Date: 10/31/2030**

**Size: ±2,715 SF**

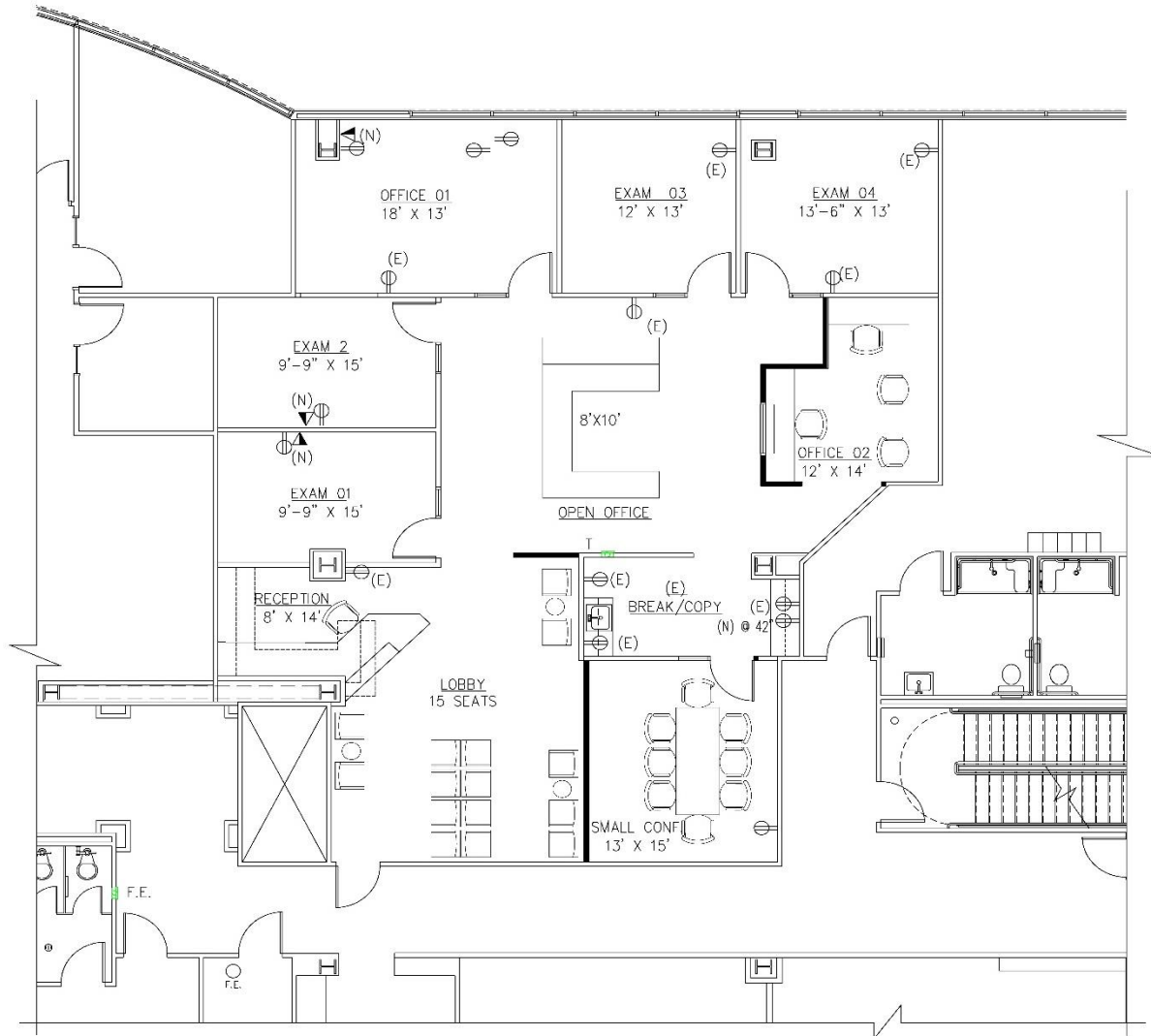
**Occupancy: 30-days**

### Property Highlights

- Stone Point is the only five-story office building in Roseville
- Two common conference rooms
- Fitness center with showers and lockers
- Ground floor food with a coffee kiosk
- Building and monument signage available
- Easy access to the I-80 freeway
- Surrounded by numerous amenities and restaurants
- On-site 24-hour security and security cameras
- Spectacular views of the Sierras and Sacramento Valley
- Four spaces per 1,000 SF leased, optional reserved and unreserved subterranean parking available



FLOOR PLAN – ±2,715 SF





AERIAL



STONE POINT  
CORPORATE CENTER

ADVENTIST HEALTH  
HEADQUARTERS

FUTURE OFFICE  
DEVELOPMENT

FUTURE OFFICE  
DEVELOPMENT

**RETAIL**

- Paul Martin's
- American Grill
- Blue Nami
- Q1227
- Costa Vida
- Bloom Coffee and Tea
- My Thai Table
- Trademark Pizza



**AERIAL**



**CHRIS SCHWARZE**  
Executive Director  
+1 916 288 4803  
chris.schwarze@cushwake.com  
LIC #01291261

**CHAD COOK, MCR, SIOR, CCIM**  
Senior Director  
+1 916 329 1562  
chad.cook@cushwake.com  
LIC #01711687

400 Capitol Mall Suite 1800 | Sacramento, CA 95618  
Main 1 916 288 4800 | 1 916 446 0024  
cushmanwakefield.com