

FOR SUBLEASE

4,903 SF AVAILABLE

11249 GOLD COUNTRY BLVD SUITE 130

GOLD RIVER, CA



**CUSHMAN &
WAKEFIELD**

11249 GOLD COUNTRY BLVD
SUITE 130

Gold River, CA



Available Immediately | Fully Furnished

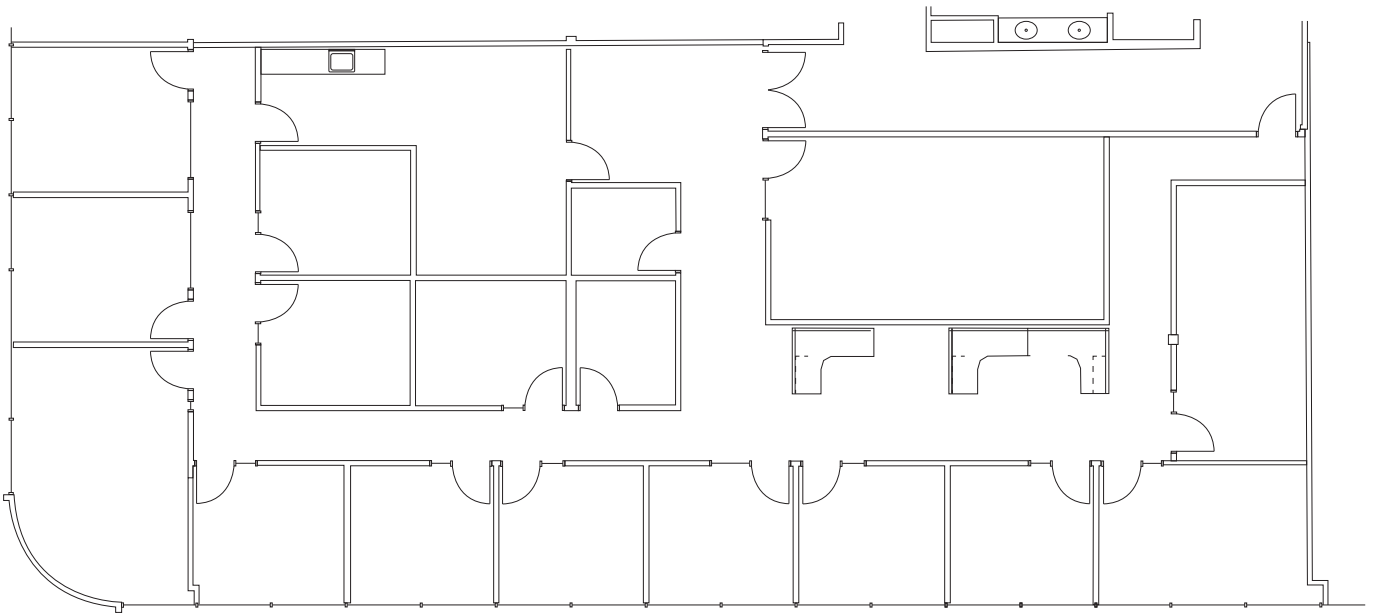
PROPERTY HIGHLIGHTS

- Prestigious Gold River Location
- Immediate Proximity to retail amenities, Restaurants and essential business services
- Secured Underground Parking
- Immaculate landscaping and peaceful water features
- Floor-to-ceiling glass
- Professional on-site property management

11249 GOLD COUNTRY BLVD
SUITE 130

Gold River, CA

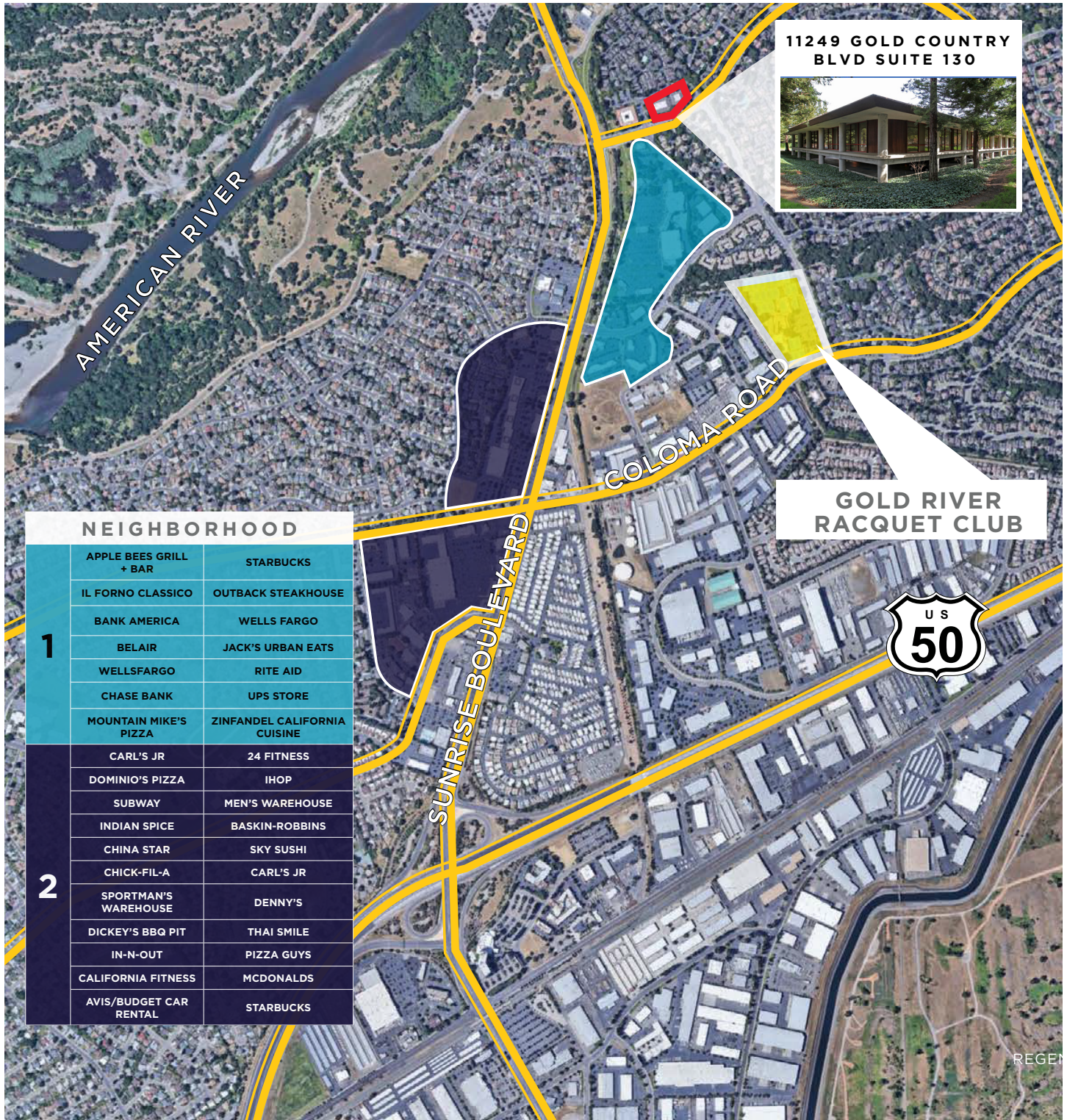
FLOOR PLAN



11249 GOLD COUNTRY BLVD
SUITE 130

Gold River, CA

AMENITY MAP



11249 GOLD COUNTRY BLVD SUITE 130



GOLD RIVER RACQUET CLUB



NEIGHBORHOOD		
1	APPLE BEES GRILL + BAR	STARBUCKS
	IL FORNO CLASSICO	OUTBACK STEAKHOUSE
	BANK AMERICA	WELLS FARGO
	BELAIR	JACK'S URBAN EATS
	WELLSFARGO	RITE AID
	CHASE BANK	UPS STORE
	MOUNTAIN MIKE'S PIZZA	ZINFANDEL CALIFORNIA CUISINE
2	CARL'S JR	24 FITNESS
	DOMINIO'S PIZZA	IHOP
	SUBWAY	MEN'S WAREHOUSE
	INDIAN SPICE	BASKIN-ROBBINS
	CHINA STAR	SKY SUSHI
	CHICK-FIL-A	CARL'S JR
	SPORTMAN'S WAREHOUSE	DENNY'S
	DICKEY'S BBQ PIT	THAI SMILE
	IN-N-OUT	PIZZA GUYS
	CALIFORNIA FITNESS	MCDONALDS
	AVIS/BUDGET CAR RENTAL	STARBUCKS



FOR MORE INFORMATION, CONTACT:

Kris Kalmbach
Managing Director
+1 916 288 4421
kris.kalmbach@cushwake.com

400 Capitol Mall
Suite 1800
Sacramento, CA 95814
+1 916 288 4800
cushmanwakefield.com

©2024 Cushman & Wakefield. All rights reserved. The information contained in this communication is strictly confidential. This information has been obtained from sources believed to be reliable but has not been verified. NO WARRANTY OR REPRESENTATION, EXPRESS OR IMPLIED, IS MADE AS TO THE CONDITION OF THE PROPERTY (OR PROPERTIES) REFERENCED HEREIN OR AS TO THE ACCURACY OR COMPLETENESS OF THE INFORMATION CONTAINED HEREIN, AND SAME IS SUBMITTED SUBJECT TO ERRORS, OMISSIONS, CHANGE OF PRICE, RENTAL OR OTHER CONDITIONS, WITHDRAWAL WITHOUT NOTICE, AND TO ANY SPECIAL LISTING CONDITIONS IMPOSED BY THE PROPERTY OWNER(S). ANY PROJECTIONS, OPINIONS OR ESTIMATES ARE SUBJECT TO UNCERTAINTY AND DO NOT SIGNIFY CURRENT OR FUTURE PROPERTY PERFORMANCE.