

CONDITIONALLY APPROVED

COUNTRY RESIDENTIAL DEVELOPMENT

FOR SALE

MEADOW LAKE DEVELOPMENT LANDS

23101 TWP 502 RD,
Rural Leduc County, AB

Sale Price: \$2,350,000 (\$16,095 per Acre)

Cushman & Wakefield Edmonton
Suite 2700, TD Tower
10088 102 Avenue
Edmonton, AB T5J 2Z1
cwedm.com

Seif Jiwaji
Senior Associate
780 643 2141
seif.jiwaji@cwedm.com

OVERVIEW

This 146 acres is located on Airport Road

10 miles east of Edmonton International Airport

2 miles west of Highway 21

6 miles south east of Beaumont

Within Black Gold School District

Ideal, quiet location for acreage sub-division

PROPERTY DETAILS

MUNICIPAL ADDRESS

23101 TWP 502 RD,
Rural Leduc County, AB

LEGAL DESCRIPTION

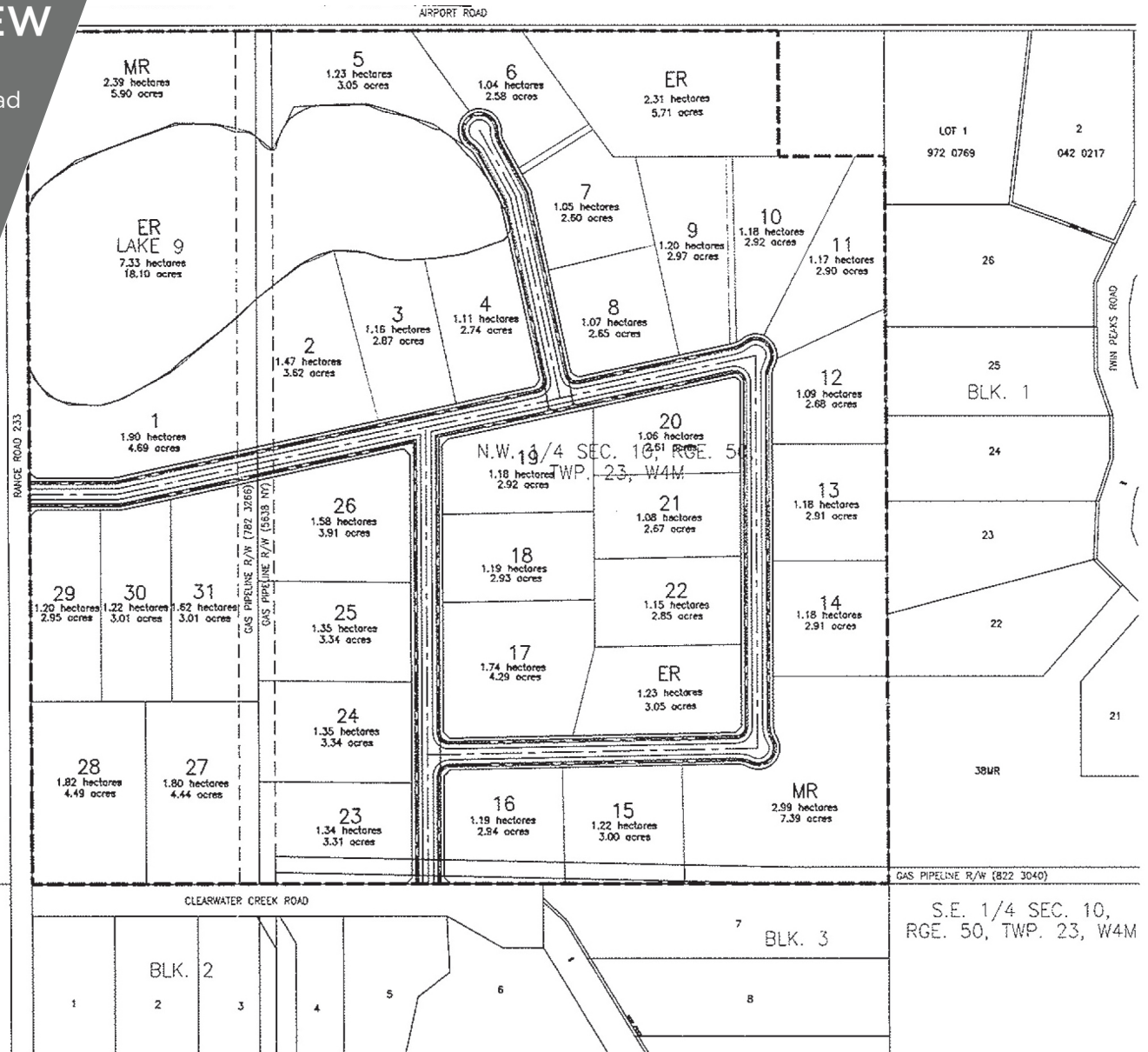
Meridian 4, Range 23,
Township 50, Section 10

ZONING

Agricultural (AG)

SIZE

146 Acres



Seif Jiwaji
Senior Associate
780 643 2141
seif.jiwaji@cwedm.com

CUSHMAN & WAKEFIELD
Edmonton