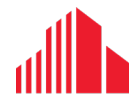
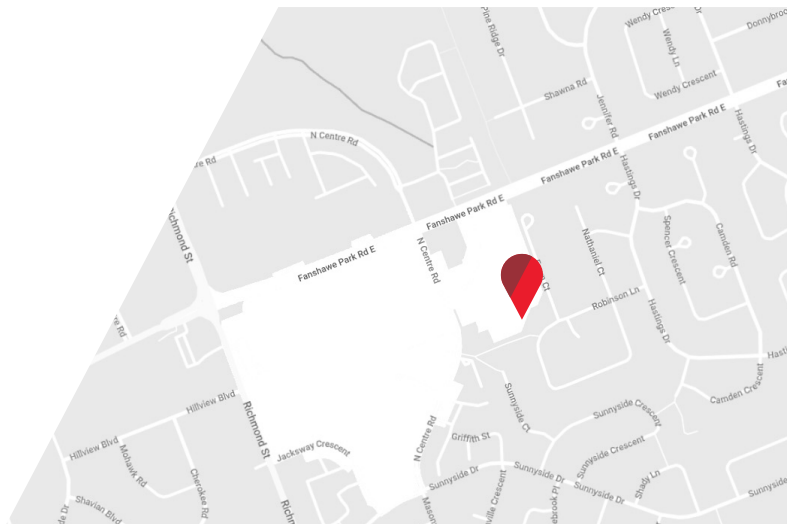




PRIME NORTH LONDON WAREHOUSE/STORAGE SPACE | FOR LEASE

**50 NORTH CENTRE ROAD**

*London, ON N5X 3W1*



**CUSHMAN & WAKEFIELD**

Southwestern Ontario

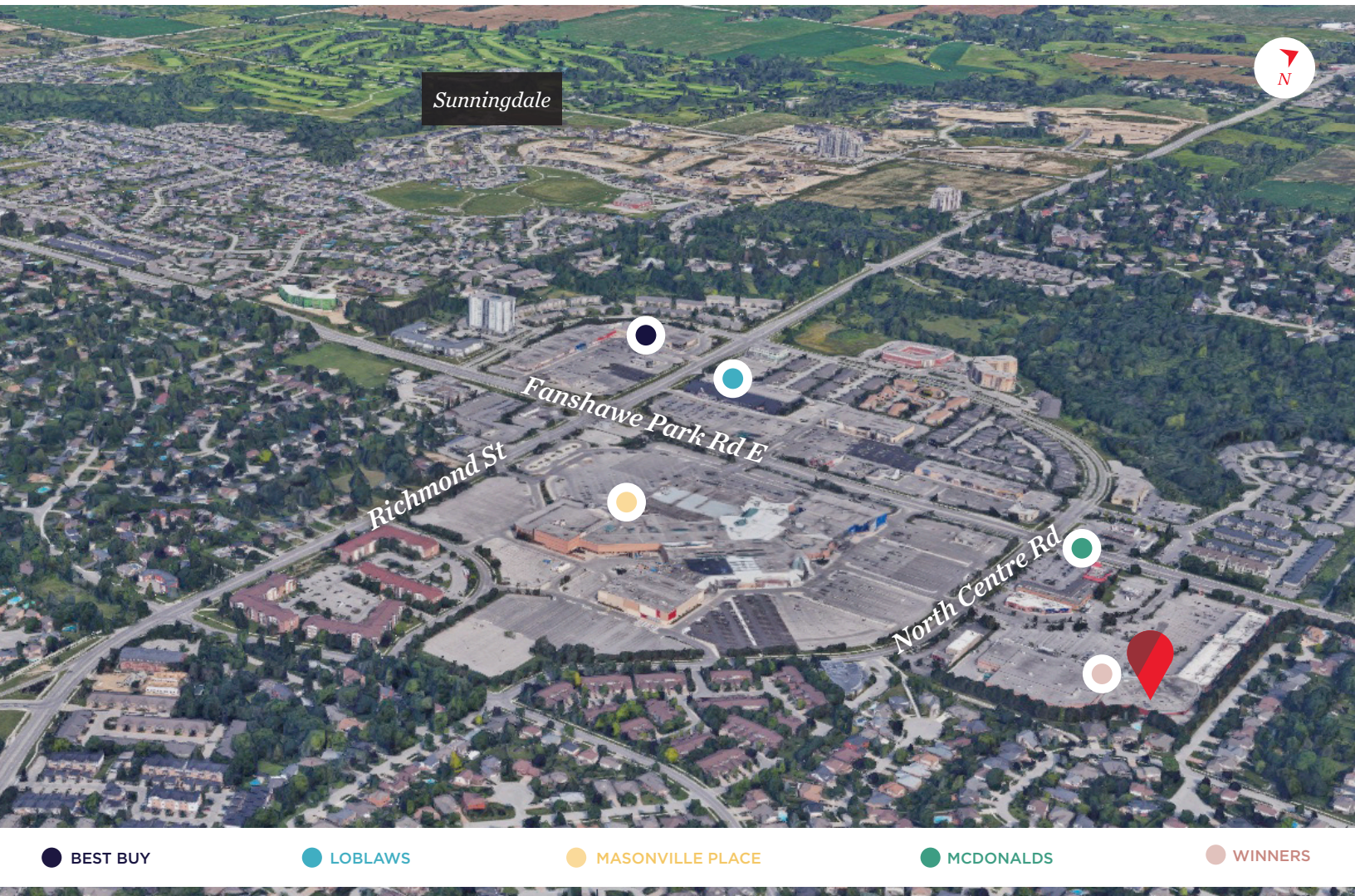


# ABOUT THE PROPERTY

Prime north London warehouse/storage/retail space available for lease in the Masonville area.

AVAILABLE SPACE	ASKING RENT	ADDITIONAL RENT
Approx. 4,482 SF	\$8.00 PSF Net	\$7.00 PSF + Utilities + HST (Est)*
*Inclusive of building insurance, common area maintenance and property taxes		

- Zoning: ASA8 - permits a wide range of uses
- Clear Height: 20'
- Man Door: 1
- Large Grade Loading Door: 1
- Shipping/receiving accommodating full sized trucks
- Newer rooftop HVAC
- Bright and clean space
- Fully sprinklered unit
- Located directly across the street to Masonville Mall
- Unit is situated on West side of plaza



**TYLER DESJARDINE**  
*Sales Representative*  
 519 438 5403  
 tyler.desjardine@cushwakeswo.com

**CUSHMAN & WAKEFIELD**  
 SOUTHWESTERN ONTARIO  
 850 Medway Park Dr, Suite 201  
 London, Ontario N6G 5C6  
 www.cushwakeswo.com

**CUSHMAN & WAKEFIELD**  
 Southwestern Ontario

©2025 Cushman & Wakefield Southwestern Ontario, Real Estate Brokerage, Independently Owned and Operated. A Member of the Cushman & Wakefield Alliance. This information has been obtained from sources believed to be reliable but has not been verified. No warranty or representation, express or implied, is made as to the condition of the property (or properties) referenced herein or as to the accuracy or completeness of the information contained herein, and same is submitted subject to errors, omissions, change of price, rental or other conditions, withdrawal without notice, and to any special listing conditions imposed by the property owner(s). Any projections, opinions or estimates are subject to uncertainty and do not signify current or future property performance. All rights reserved.



# PROPERTY IMAGES



**TYLER DESJARDINE**  
Sales Representative  
519 438 5403  
tyler.desjardine@cushwakeswo.com

**CUSHMAN & WAKEFIELD**  
SOUTHWESTERN ONTARIO  
850 Medway Park Dr, Suite 201  
London, Ontario N6G 5C6  
[www.cushwakeswo.com](http://www.cushwakeswo.com)

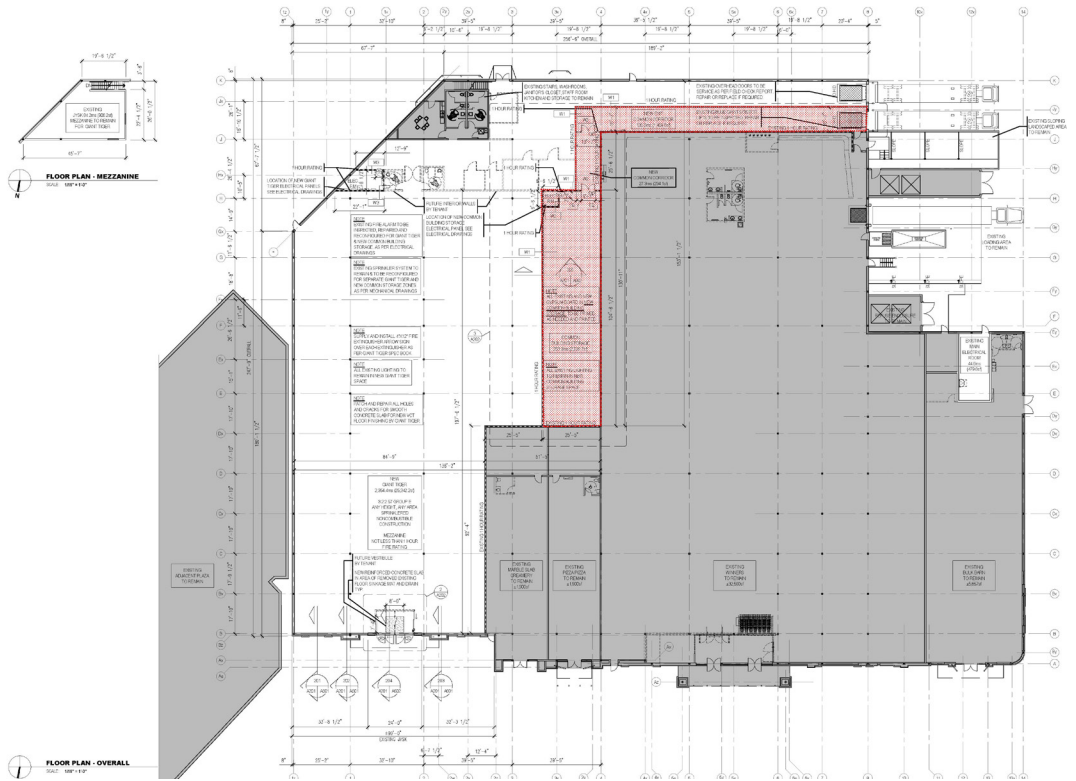
 **CUSHMAN & WAKEFIELD**  
Southwestern Ontario

©2025 Cushman & Wakefield Southwestern Ontario, Real Estate Brokerage, Independently Owned and Operated. A Member of the Cushman & Wakefield Alliance. This information has been obtained from sources believed to be reliable but has not been verified. No warranty or representation, express or implied, is made as to the condition of the property (or properties) referenced herein or as to the accuracy or completeness of the information contained herein, and same is submitted subject to errors, omissions, change of price, rental or other conditions, withdrawal without notice, and to any special listing conditions imposed by the property owner(s). Any projections, opinions or estimates are subject to uncertainty and do not signify current or future property performance. All rights reserved.

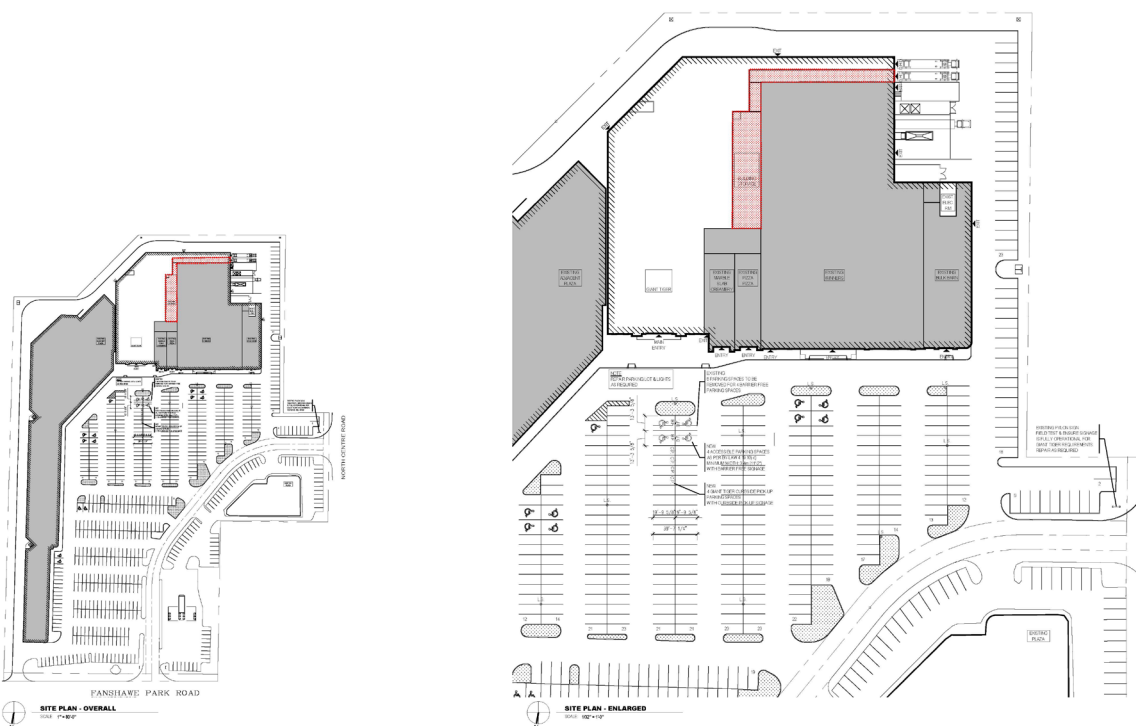


# FLOOR PLAN & SITE PLAN

## FLOOR PLAN



## SITE PLAN



**TYLER DESJARDINE**  
Sales Representative  
519 438 5403  
tyler.desjardine@cushwakeswo.com

**CUSHMAN & WAKEFIELD**  
SOUTHWESTERN ONTARIO  
850 Medway Park Dr, Suite 201  
London, Ontario N6G 5C6  
[www.cushwakeswo.com](http://www.cushwakeswo.com)

**CUSHMAN & WAKEFIELD**  
Southwestern Ontario