

AVAILABLE IMMEDIATELY



## Main Floor Retail Space Available

### Property Highlights

- Over 11,000 SF of retail space available immediately
- Underground parking available
- Great exposure and prominently located along Jasper Avenue
- Jasper Avenue has over 15,000 vehicles per day
- Current DC1 zoning allows for a wide variety of uses
- Each CRU has mezzanine space available
- 19' ceiling height
- 200 amps and 7.5 ton HVAC per unit
- Rental Rate: market



**Gary Killips**  
Partner  
780 917 8332  
gary.killips@cwedm.com

**John Shamey**  
Associate Partner  
780 702 8079  
john.shamey@cwedm.com

**Devan Ramage**  
Associate  
780 702 9479  
devan.ramage@cwedm.com

**CUSHMAN & WAKEFIELD**  
Edmonton  
Suite 2700, TD Tower  
10088 - 102 Avenue  
Edmonton, AB T5J 2Z1  
[www.cwedm.com](http://www.cwedm.com)



**Aerial**



**Gary Killips**  
Partner  
780 917 8332  
gary.killips@cwedm.com

**John Shamey**  
Associate Partner  
780 702 8079  
john.shamey@cwedm.com

**Devan Ramage**  
Associate  
780 702 9479  
devan.ramage@cwedm.com

**CUSHMAN & WAKEFIELD**  
Edmonton  
Suite 2700, TD Tower  
10088 - 102 Avenue  
Edmonton, AB T5J 2Z1  
[www.cwedm.com](http://www.cwedm.com)

Cushman & Wakefield Edmonton is independently owned and operated / A Member of the Cushman & Wakefield Alliance. No warranty or representation, express or implied, is made to the accuracy or completeness of the information contained herein, and same is submitted subject to errors, omissions, change of price, rental or other conditions, withdrawal without notice, and to any special listing conditions imposed by the property owner(s). As applicable, we make no representation as to the condition of the property (or properties) in question. November 1, 2019



**Property Photos**



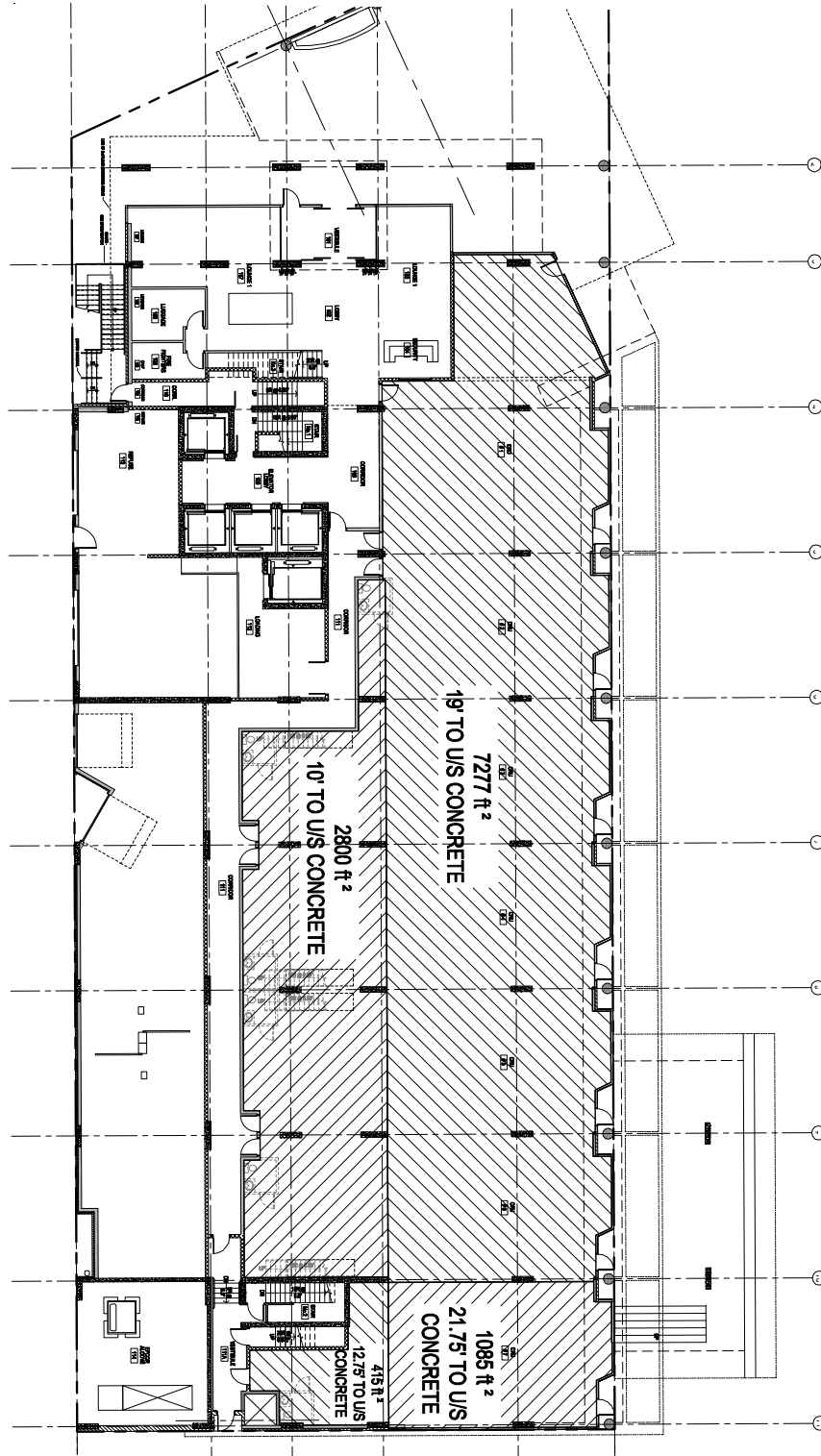
**Gary Killips**  
Partner  
780 917 8332  
gary.killips@cwedm.com

**John Shamey**  
Associate Partner  
780 702 8079  
john.shamey@cwedm.com

**Devan Ramage**  
Associate  
780 702 9479  
devan.ramage@cwedm.com

**CUSHMAN & WAKEFIELD**  
Edmonton  
Suite 2700, TD Tower  
10088 - 102 Avenue  
Edmonton, AB T5J 2Z1  
[www.cwedm.com](http://www.cwedm.com)

**Main Floor Plan**



**Gary Killips**  
Partner  
780 917 8332  
gary.killips@cwedm.com

**John Shamey**  
Associate Partner  
780 702 8079  
john.shamey@cwedm.com

**Devan Ramage**  
Associate  
780 702 9479  
devan.ramage@cwedm.com

**CUSHMAN & WAKEFIELD**  
Edmonton  
Suite 2700, TD Tower  
10088 - 102 Avenue  
Edmonton, AB T5J 2Z1  
[www.cwedm.com](http://www.cwedm.com)